

### GRF 302 30 L

**Single phase 110V, 240V or 3 phase 415V**

Supplied fitted with appropriate plug and full user instructions.

**Height** 860 mm x **Width** - overall 500 mm x **Depth** 560 mm

**SPECIFICATION** CE standard

- Electric control box

#### Indicators

- Delivery line - visual indicator with combined electric cut-out switch
- Nitrile seals
- Flexible hoses – 2 metres long, suction & outlet
- Heavy duty trolley & wheels
- **Inlet (pump protection) filtration** – micron metal mesh
- **Delivery filtration “Spin-on” type** – See Options below

### GRF302 OUTLET FILTRATION OPTIONS

Outlet filtration micron options available:

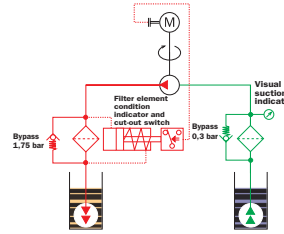
**CS150 A SERIES** 3, 6, 10 and 25 micron absolute. Effective area - 5390 cm<sup>2</sup>

**CS150 P SERIES** 10 and 25 micron nominal. Effective area - 5760 cm<sup>2</sup>

**GRF302 - Water removal options available:**

#### CW150 P SERIES

10 & 25 micron nominal removing 0.79 litres of water while filtering oil at 10 or 25 micron nominal filtration



## Technical data

<b>Pump</b>	Gear pump
<b>Electric Motor</b>	0.75kW 110/230 Volt single phase, 415V three phase electric motor
<b>Flow (l/min)</b>	30 l/min
<b>Max. Operation Pressure</b>	5 bar
<b>Viscosity range</b>	Min. operation 10 cSt Max. operation 150 cSt Max. only for cold start 300 cSt
<b>Suction Filter</b>	173 µm metal mesh washable as standard
<b>Filtration Rating</b>	See options*
<b>By-Pass valve</b>	Visual indicator with combined electric cut-out switch
<b>Fluid Temperature</b>	From -10 to +80 °C (fluid viscosity dependent)
<b>Ambient Temperature</b>	From -20 to +45 °C
<b>Protection Class</b>	IP 55
<b>Seal material</b>	NBR
<b>Fluid Compatibility</b>	Mineral Oil
<b>Suction hose - with lance</b>	1" length 2000 mm
<b>Pressure hose - with lance</b>	1" length 2000 mm
<b>Weight/Dimensions</b>	48 kg, Height 860mm, Depth 560mm, Width 500mm

**Specifically designed for filling and emptying systems**

\* Water removal outlet filtration also available

**Please note: filtration is not included and should be ordered separately**

## Spare Parts

### Filter element - Standard length

Inorganic microfibre element

CS 100 A01 A P01	1 µm absolute
CS 100 A03 A P01	3 µm absolute
CS 100 A06 A P01	6 µm absolute
CS 100 A10 A P01	10 µm absolute
CS 100 A25 A P01	25 µm absolute
Wire mesh element	
CS 100 M25 A P01	25 µm
CS 100 M60 A P01	60 µm

### Filter element - Extended length

Inorganic microfibre element

CS 150 A01 A P01	1 µm absolute
CS 150 A03 A P01	3 µm absolute
CS 150 A06 A P01	6 µm absolute
CS 150 A10 A P01	10 µm absolute
CS 150 A25 A P01	25 µm absolute
Wire mesh element	
CS 150 M25 A P01	25 µm
CS 150 M60 A P01	60 µm

**A complete range of off line filling/filtration units**



**and more..**



## Ordering information

**GRF302**      Example: GRF 

1	2	3	4	5
30	2	1	M149	S

### 1 - Flow

**30** 30L/min

### 2 - Electrical power

**2** 0.75kW

### 3 - Electric motor

- |          |                   |
|----------|-------------------|
| <b>1</b> | 110V single phase |
| <b>2</b> | 240V single phase |
| <b>3</b> | 415V 4 phase      |

### 4 - Replacement suction element

**M149** 173µm cleanable element

### 5 - Filtration

**S** No filter fitted, to be ordered separately - see spare parts

