

Directional spool valve electrically operated type 3URPEE6

NS 6 | p_{max} 30 MPa | Q_{max} 45 dm³/min | WK 422 220



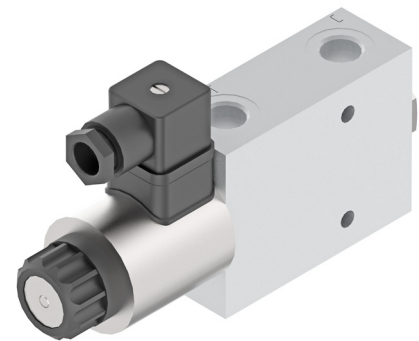
DATA SHEET - OPERATION MANUAL

APPLICATION

Directional spool valves electrically operated **3URPEE6** type are designed to change the direction of fluid flow in a system, they are mainly used for switching between the receiver and the drain.

These directional valves electrically operated **3URPEE6** type are adapted for threaded mounting in any position in a hydraulic system.

The product is compliant with the regulations of directive 2014/35/UE.

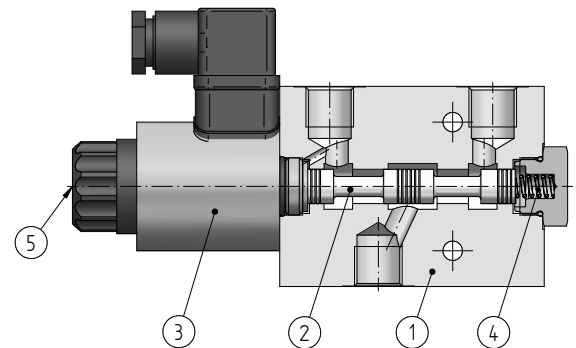


DESCRIPTION OF OPERATION

Main elements of directional spool valve **3URPEE6** type are housing **1**, spool **2**, solenoid **3**, centering spring **4** and a manual override **5**.

The spool **2** shifts into one of end positions by direct means of the solenoid **3**. The return to the neutral position is forced by the centering spring **4**.

In case of emergency the spool can be shifted manually by the use of the override **5**.

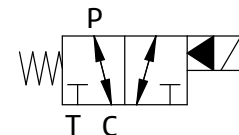


TECHNICAL PARAMETERS

hydraulic fluid	mineral oil	
required fluid cleanliness class	ISO 4406 class 20/18/15	
nominal fluid viscosity	37 mm ² /s at temperature 55°C	
viscosity range	2,8 ÷ 380 mm ² /s	
ambient temperature range	-30 ÷ 50°C	
max operating pressure	in ports P, C:	30 MPa
	in port T:	21 MPa
switching frequency	switching on: 60 ms; switching off: do 40 ms	
max. switching frequency	15000 on/h	
weight	~ 1,5 kg	
nominal supply voltage for solenoids	DC 12V; DC 24V	
supply voltage tolerance	±10%	
insulation class	IP 65	
power requirement (direct current)	30 W	
solenoid coil temperature	max 150°C	

assembly and operation requirements at www.operating-conditions.ponar.pl

DIAGRAM

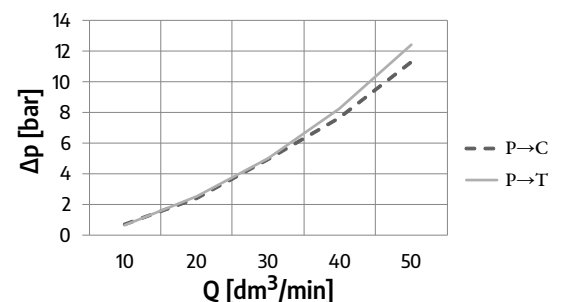


PERFORMANCE CURVES

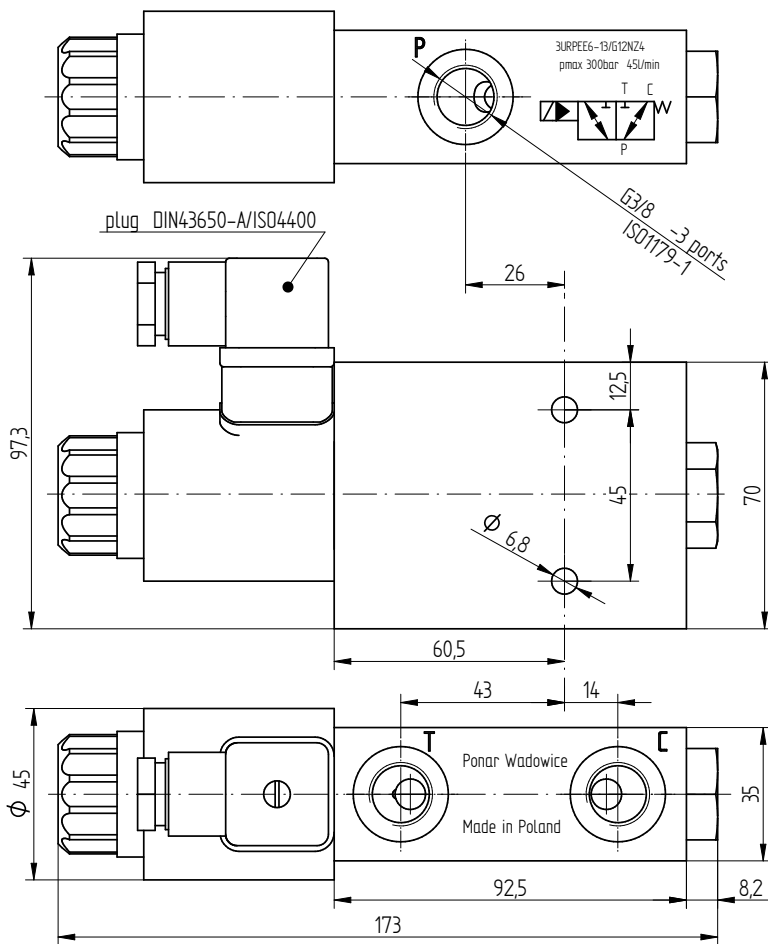
measured at viscosity $\nu=41$ mm²/s and temperature $t=50$ °C

flow resistance curves

charts of pressure changes Δp in the function of directional valve **3URPEE6...** flow Q

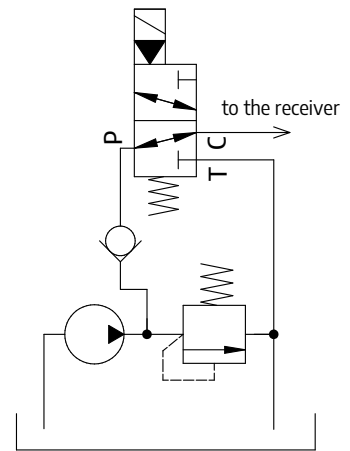


OVERALL AND CONNECTION DIMENSIONS



EXAMPLE OF APPLICATION

in a hydraulic system



HOW TO ORDER

3URPEE6 - /

1 2 3 4 5

1 series number

series 13 = 13
(10÷19) connection and installation dimensions unchanged

2 supply voltage for solenoid

12V DC = G12N
24V DC = G24N

3 solenoid plug

plug Z4 = Z4
plug Z4L (with a light) = Z4L

4 sealing

NBR (for fluids based on mineral oil) = \emptyset
FPM (for fluids based on phosphate esters) = V

5 further requirements = *

(to be agreed with the manufacturer)

\emptyset Symbol means the field should be left blank.

The symbols in bold are preferred versions available in short delivery time.

Coding example: 3URPEE6-13/G24NZ4

CONTACT

PONAR Wadowice S.A.
ul. Wojska Polskiego 29
34-100 Wadowice

tel. +48 33 488 21 00
www.ponar-wadowice.pl