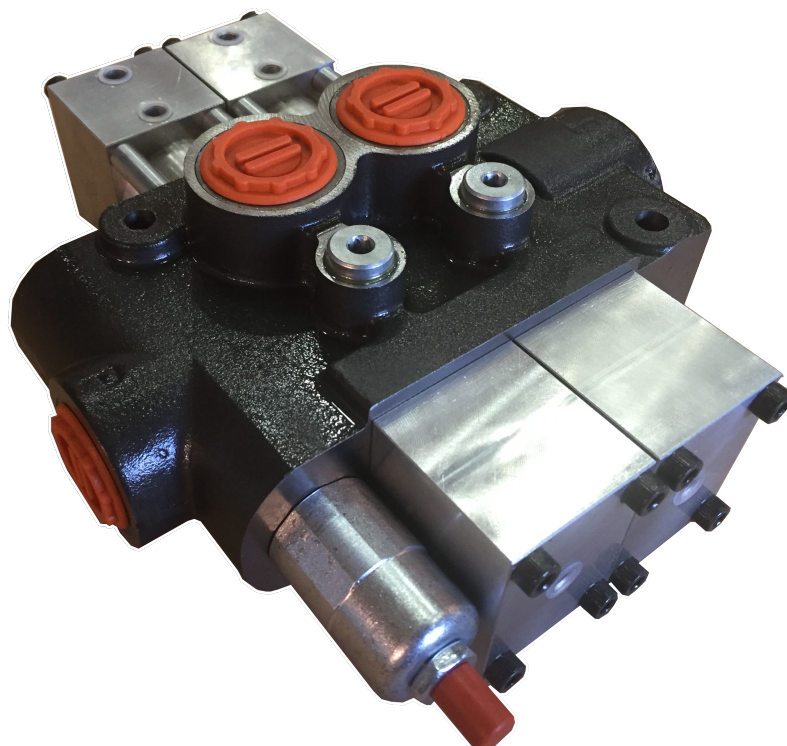




## NEW CONTROL VALVE for tipping trucks & trailers - 02TV100



### Features:

Up to 120 l/min [32 gpm] flow rate  
Max. pressure of 220 bar [3190 psi]  
Fully proportional control  
Adjustable slow lower  
Pressure switch gauges

Pneumatic working pressure:  
5 - 10 bar [73 to 145 psi]

### Hydraulic scheme

