

Directional spool valve electrically operated type 6UREE10

NS 10 | p_{max} 35 MPa | Q_{max} 85 dm³/min | WK 421 000



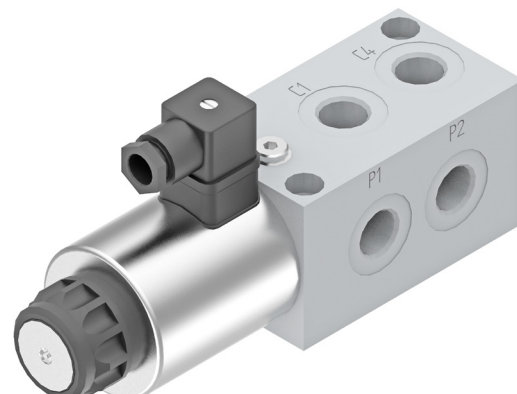
DATA SHEET – OPERATION MANUAL

APPLICATION

Directional spool valves electrically operated **6UREE10** type are designed to change the direction of fluid flow in a system, they are mainly used for supply switching and control between independent parts of a hydraulic system.

Directional valves electrically operated **6UREE10** type are adapted for threaded mounting in any position in a hydraulic system.

The product is compliant with the regulations of directive 2014/35/UE.

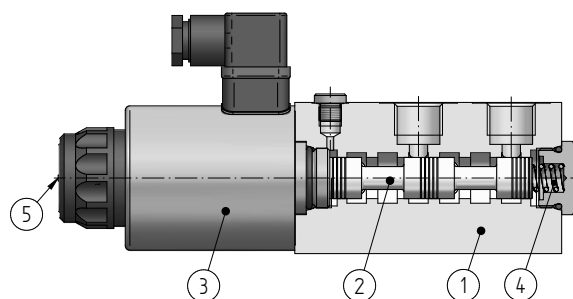


DESCRIPTION OF OPERATION

Main elements of directional spool valve **6UREE10** type are housing **1**, spool **2**, solenoid **3**, centering spring **4** and manual override **5**.

The spool **2** shifts into one of end positions by direct means of the solenoid **3**. The return to the neutral position is forced by the centering spring **4**.

In case of emergency the spool can be shifted manually by the use of the override **5**.

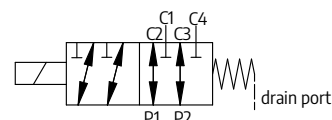


TECHNICAL PARAMETERS

hydraulic fluid	mineral oil
required fluid cleanliness class	ISO 4406 class 20/18/15
recommended filtration	up to 10 μ m
nominal fluid viscosity	37 mm ² /s at temperature 55 °C
viscosity range	2,8 ÷ 380 mm ² /s
ambient temperature range	-30 ÷ 50 °C
max operating pressure	21 MPa without drain port 35 MPa with drain port
switching frequency	switching on: up to 60 ms switching off: up to 40 ms
max. switching frequency	15000 on/h
weight	max 5 kg
nominal supply voltage for solenoids	DC 12V; DC 24V
supply voltage tolerance	±10%
insulation class	IP 65
power requirement (direct current)	45 W
solenoid coil temperature	max 150 °C

assembly and operation requirements at www.operating-conditions.ponar.pl

DIAGRAM

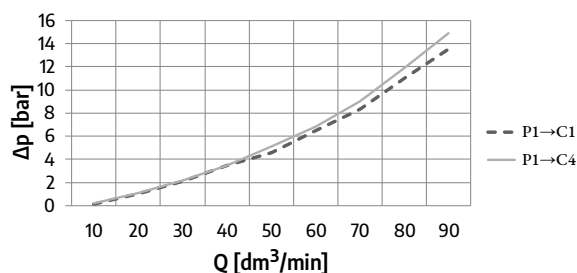


PERFORMANCE CURVES

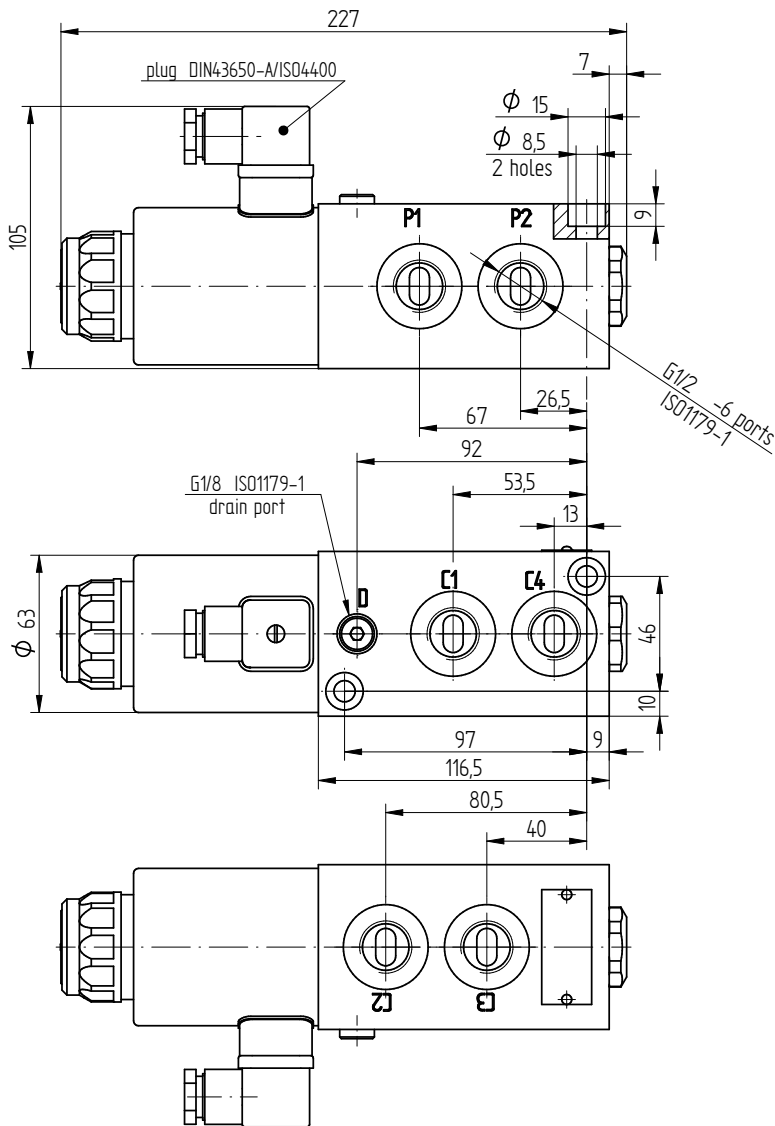
measured at viscosity $\nu=41$ mm²/s and temperature $t=50$ °C

flow resistance curves

charts of pressure changes Δp in the function of directional valve **6UREE10...** flow Q

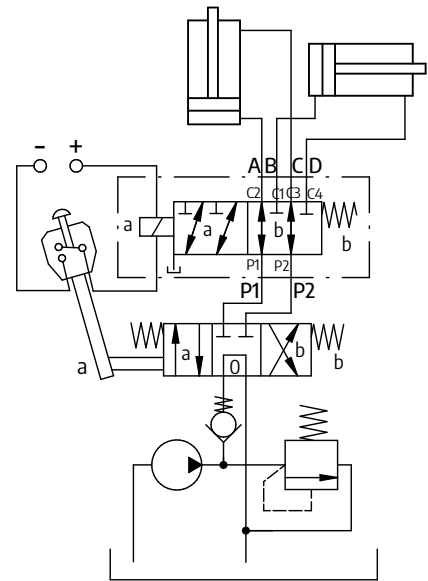


OVERALL AND CONNECTION DIMENSIONS



EXAMPLE OF APPLICATION

in a hydraulic system



HOW TO ORDER

6UREE10 - / **R** -

1 2 3 4 5 6

1 series number

series 02 = 02
(01÷09) connection and installation dimensions unchanged

2 type of connection

thread G1/2 = R

3 supply voltage for solenoid

12V DC = G12N
24V DC = G24N

4 solenoid plug

plug Z4 = Z4
plug Z4L (with a light) = Z4L

5 sealing

NBR (for fluids based on mineral oil) = Ø
FPM (for fluids on phosphate ester base) = V

6 further requirements = *

(to be agreed with the manufacturer)

Ø Symbol means the field should be left blank.

The symbols **in bold** are preferred versions available in short delivery time.

Coding example: **6UREE10-02/R-G24NZ4**

CONTACT

PONAR Wadowice S.A.
ul. Wojska Polskiego 29
34-100 Wadowice
6UREE10... | Data Sheet - Operation Manual

tel. +48 33 488 21 00
www.ponar-wadowice.pl

WK 421 000 | 05.2020