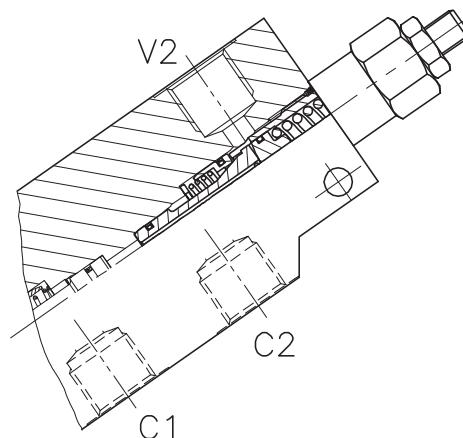
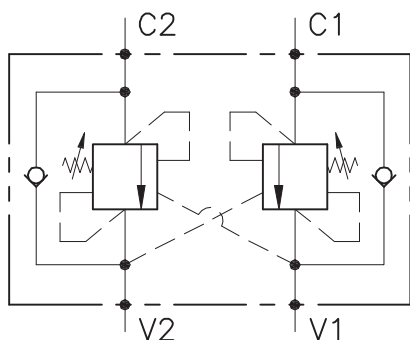


A-OWC-DE-...-LU-...



CARATTERISTICHE

Luce nominale
 Portata min/max
 Pressione max. di picco
 Pressione max. di taratura
 Rapporto di pilotaggio standard
 Temperatura ambiente
 Temperatura olio
 Filtraggio consigliato

DN 6/8/10
1/60 l/min - 0.26/15.9 GPM
350 bar - 5075 PSI
350 bar - 5075 PSI
Vedi tab. / See tab.
-30°C + 50°C
-30°C + 80°C
30 micron

PERFORMANCE

Rated size
 Min/max flow-rate
 Max peak pressure
 Max setting pressure
 Standard pilot ratio
 Room temperature
 Oil temperature
 Recommended filtration

NOTE:

La taratura deve essere **1.3** volte maggiore della pressione indotta dal carico.

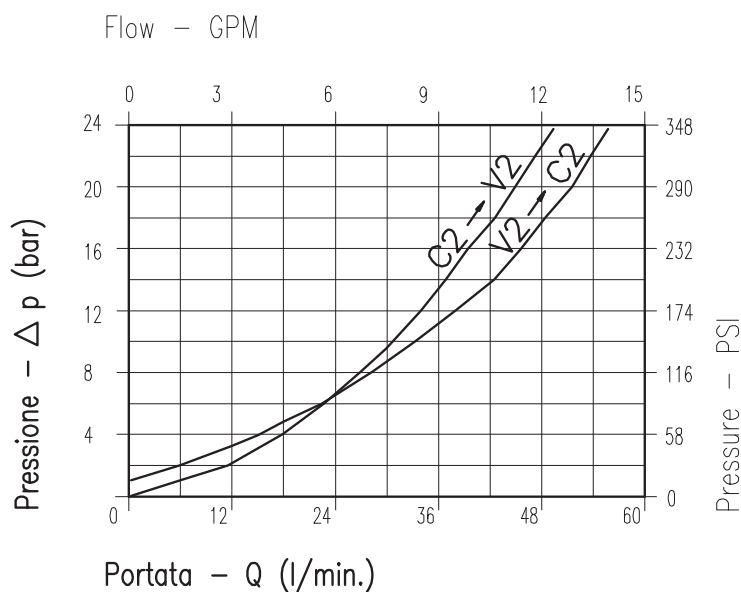
Valve should be set at **1.3** times load induced pressure.

ESEMPIO/EXAMPLE:

Pressione di lavoro max:

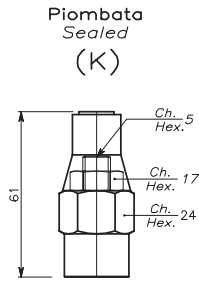
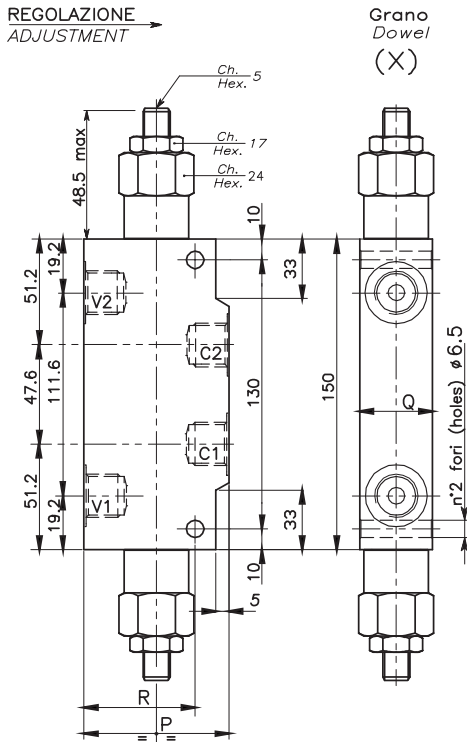
Max working pressure:

350 bar / 1.3 = 270 bar

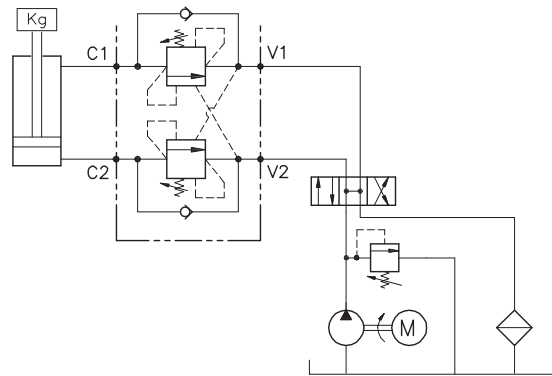


Viscosità olio 46 cSt a 50°C
Oil viscosity 46 cSt at 50°C

VALVOLA BILANCIAMENTO, BLOCCO E CONTROLLO MOVIMENTO A DOPPIO EFFETTO CON COLLETTORE IN LINEA
DOUBLE COUNTERBALANCE VALVE WITH IN LINE BODY



ESEMPIO TIPICO DI CIRCUITO
TYPICAL CIRCUIT EXAMPLE



DIMENSIONI
DIMENSIONS

| Campo taratura Setting range | | P | Q | R | Attacchi Port size V2-C2 V1-C1 GAS (BSPP) | Luce nominale Rated size | Portata max Max flow-rate |
|---------------------------------|-----|----|----|------|---|-----------------------------|------------------------------|
| | | | | | | DN | l/min - GPM |
| 079 | 078 | 60 | 30 | 47,5 | 1/4" | 6 | 20-5 |
| 081 | 080 | 60 | 30 | 47,5 | 3/8" | 8 | 40-10 |
| 083 | 082 | 70 | 35 | 55 | 1/2" | 10 | 60-15 |

CODICE DI ORDINAZIONE
HOW TO ORDER

N01 . 079 . 0 X 0 . A

| Campo taratura / Setting range | |
|---|--|
| 079 | 078 |
| 081 | 080 |
| 083 | 082 |
| Campo taratura 30÷220 bar (molla colore verde) | Campo taratura 60÷350 bar (molla colore giallo) |
| Setting range 30÷220 bar (green spring) | Setting range 60÷350 bar (yellow spring) |
| Taratura standard (Q=5 l/1') | Taratura standard (Q=5 l/1') |
| Incr. press. - bar giro/vite | Incr. press. - bar giro/vite |
| Std. bar setting (Q=5 l/1') | Std. bar setting (Q=5 l/1') |
| Pressure rise - turn of screw | Pressure rise - turn of screw |
| 180 bar | 250 bar |
| (50) | (90) |

| Rapporto di pilotaggio Pilot ratios | Regolazione Adjustment | Collettore Body |
|--|---------------------------|--|
| O 4.25: 1 | X Grano - Dowel | A Acciaio zincato Zinc plated steel |
| D 8: 1 | K Piombata - Sealed | |