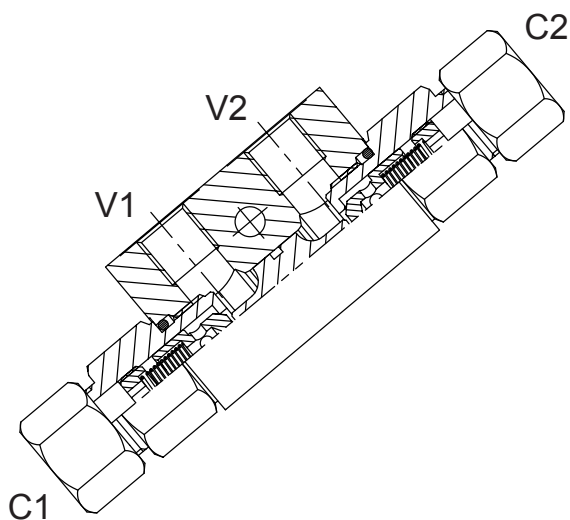
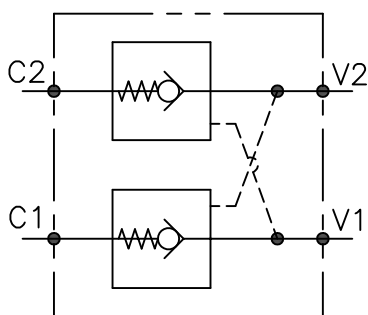


A-VNR-SO-DE-...-D-L-...



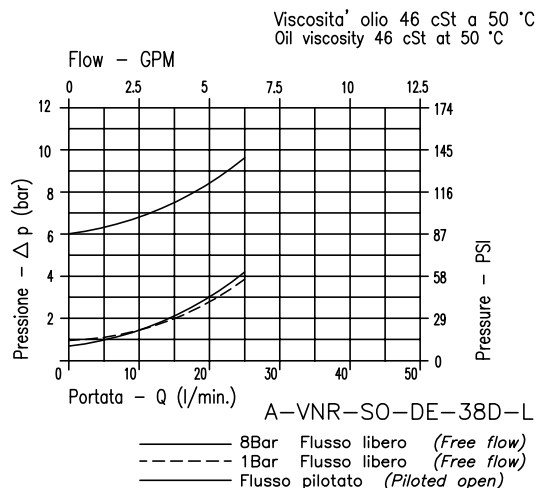
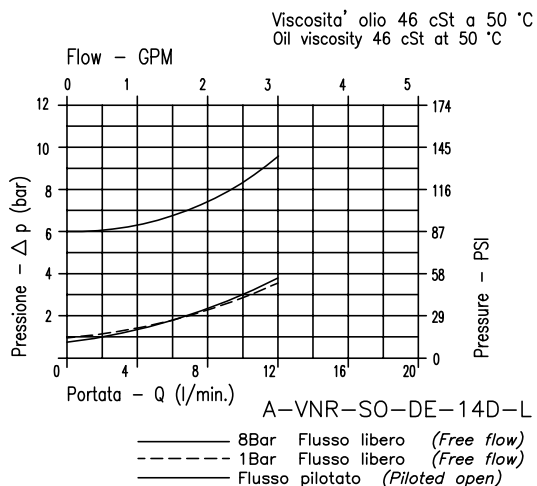
CARATTERISTICHE

Luce nominale
 Portata min/max
 Pressione max. di picco
 Rapporto di pilotaggio standard
 Temperatura ambiente
 Temperatura olio
 Filtraggio consigliato
 Peso

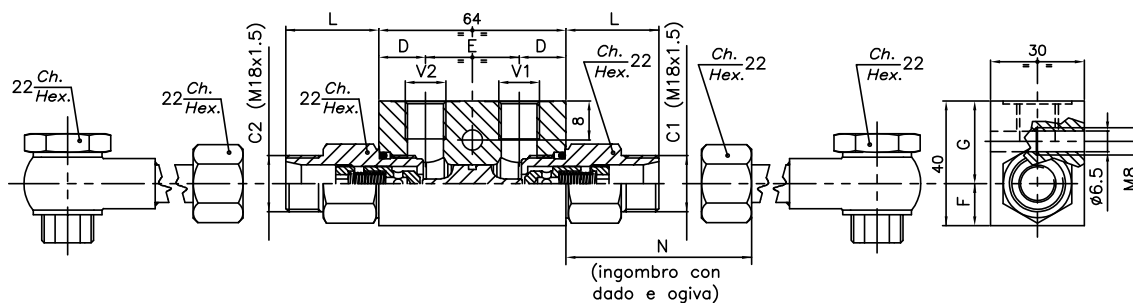
Vedi tabella/See table
 Vedi tabella/See table
350 bar 5075 PSI
6: 1
-30°C + 50°C
-30°C + 80°C
30 + 50
 Vedi tabella/See table

PERFORMANCE

Rated size
 Min/max flow-rate
 Max peak pressure
 Standard pilot ratio
 Room temperature
 Oil temperature
 Recommended filtration
 Weight



VALVOLA DI BLOCCO A DOPPIO EFFETTO PILOTATA ALUMINIUM DOUBLE PILOT CHECK VALVE

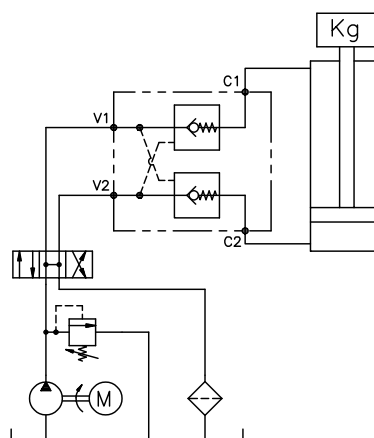


**A RICHIESTA
ON REQUEST**

CODICE KIT RUBO: Bullone, Rondelle, Occhio, Tubo.
PIPE KIT CODE: Bolt, Washers, Fitting, Pipe

KT-012-40 (M=40 mm)
KT-012-200 (M=200 mm)
KT-012-400 (M=400 mm)

ESEMPIO TIPICO DI CIRCUITO TYPICAL CIRCUIT EXAMPLE



DIMENSIONI DIMENSIONS

N° VALVOLA VALVE NUMBER	SIGLA VALVOLA VALVE CODE	D	E	F	G	L	N	Attacchi Port size V1-V2 GAS (BSPP)	Luce nominale Rated size DN	Portata max max flow-rate l/min-GPM	Peso Weight Kg
252	A-VNR-SO-DE-14D-L-...	14	36	13	27	23	34	1/4"	6	20-5.3	0.7
368	A-VNR-SO-DE-38D-L-...							3/8"	8	40-10.6	0.7

CODICE DI ORDINAZIONE HOW TO ORDER

N03	252	0	W	0	.A	} D Con dado e ogiva With nut and cutting rings
003	368	0	W	0	.A	

	Pistone di pilotaggio Pilot piston	Inizio apertura Cracking pressure	Materiale collettore Body material
A	O-RING sul pist. di pilotaggio Pilot piston O-RING	J 1 bar	Acciaio zincato Zinc plated steel
O	Senza O-RING sul pist. di pilotaggio No pilot piston O-RING	Z 3 - 4 bar	
		W 6 - 8 bar	

Omettere per solo DIN
(senza dado e ogiva)
Omit for DIN only
(without nut and ring)