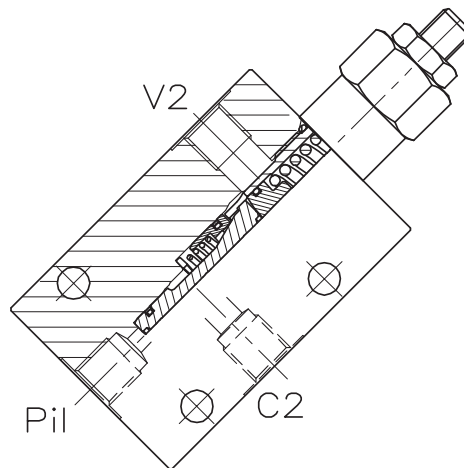
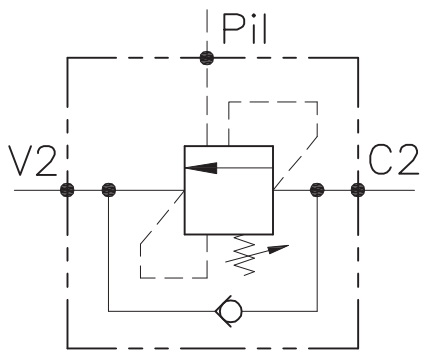


# A-WB-C-SE-...-14-...-...



## CARATTERISTICHE

Luce nominale	<b>DN 8/10</b>
Portata min/max	<b>1/60 l/min - 0.26/15.9 GPM</b>
Pressione max. di picco	<b>450 bar - 6525 PSI</b>
Pressione max. di taratura	<b>350 bar - 5075 PSI</b>
Rapporto di pilotaggio standard	<b>Vedi tab. / See tab.</b>
Temperatura ambiente	<b>-30°C + 50°C</b>
Temperatura olio	<b>-30°C + 80°C</b>
Filtraggio consigliato	<b>30 micron</b>
Coppia di serraggio	
Peso	

## PERFORMANCE

Rated size
Min/max flow-rate
Max peak pressure
Max setting pressure
Standard pilot ratio
Room temperature
Oil temperature
Recommended filtration
Tightening torque
Weight

### NOTE:

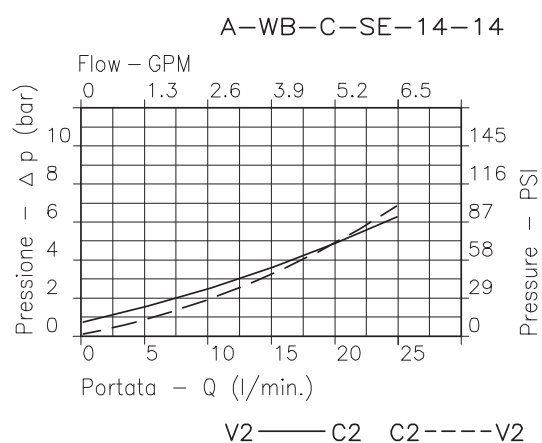
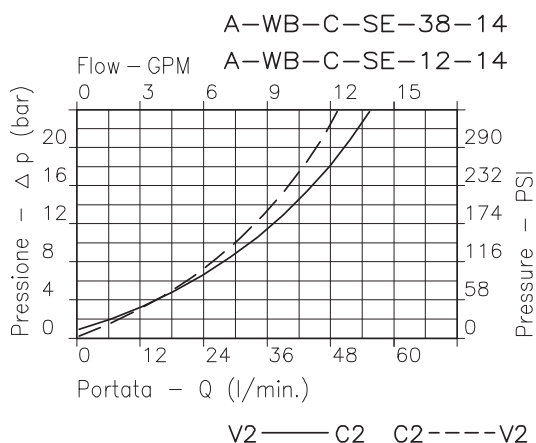
La taratura deve essere 1.3 volte maggiore della pressione indotta dal carico. Valve should be set at 1.3 times load induced pressure.

### ESEMPIO/EXAMPLE:

Pressione di lavoro max

**350 bar / 1.3 = 270 bar**

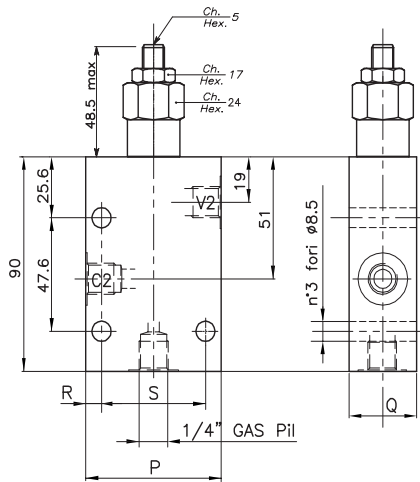
Max working pressure



**Viscosità olio 46 cSt a 50°C - Oil viscosity 46 cSt at 50°C**

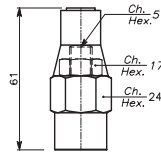
# VALVOLA BILANCIAMENTO, BLOCCO E CONTROLLO MOVIMENTO CON PILOTAGGIO ESTERNO COUNTERBALANCE VALVE WITH EXTERNAL PILOT

REGOLAZIONE  
ADJUSTMENT

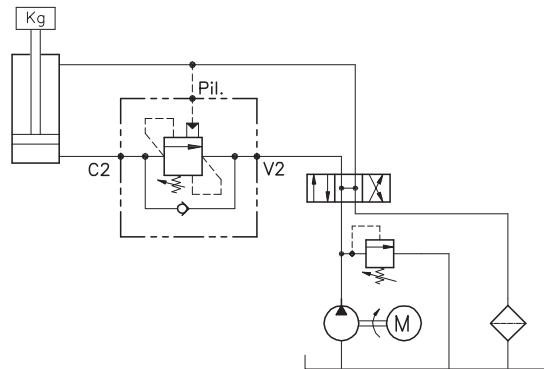


Grano  
Dowel  
(X)

Piombata  
Sealed  
(K)



## ESEMPIO TIPICO DI CIRCUITO TYPICAL CIRCUIT EXAMPLE



## DIMENSIONI DIMENSIONS

Campo taratura Setting range		P	Q	R	S	Attacchi Port size V2-C2 GAS (BSPP)	Luce nominale Rated size DN	Portata max Max flow-rate l/min - GPM
239	238	60	30	10	40	3/8"	8	40-10
241	240	70	35	10	50	1/2"	10	60-15

## CODICE DI ORDINAZIONE HOW TO ORDER

N01 . 239 . 0 X 0 . A

Campo taratura / Setting range				Rapporto di pilotaggio Pilot ratios		Regolazione Adjustment		Collettore Body	
239		238		O	4.25: 1	X	Grano - Dowel	A	
241		240		D	8: 1	K	Piombata - Sealed	Acciaio zincato Zinc plated steel	
Campo taratura 30÷220 bar (molla colore verde) Setting range 30÷220 bar (green spring)	Campo taratura 60÷350 bar (molla colore giallo) Setting range 60÷350 bar (yellow spring)	Taratura standard (Q=5 l/1') Std. bar setting (Q=5 l/1') <b>180 bar</b>	Incr. press. - bar giro/vite Pressure rise - turn of screw <b>(50)</b>	Taratura standard (Q=5 l/1') Std. bar setting (Q=5 l/1') <b>250 bar</b>	Incr. press. - bar giro/vite Pressure rise - turn of screw <b>(90)</b>				