

## THREE PHASE ASYNCHRONOUS ELECTRIC MOTORS FOR CIRCULAR DISCS WITH ALUMINIUM BODY AND WITH a BUILT-IN ELECTRIC-MAGNET BRAKE

### 1. Application

The electric motors are used for circular discs for timber cutting as well as for mechanical treatment of wooden sheets and plates.

### 2. Technical Data

Degree of protection - IP54

Thermal resistance class of insulation – F (155°C)

### 3. Construction

The motors are offered with aluminum body and cast-iron shields.

The AX series motors are offered with a built-in electric-magnetic brake.

Rated brake (stopping) torque – 12Nm

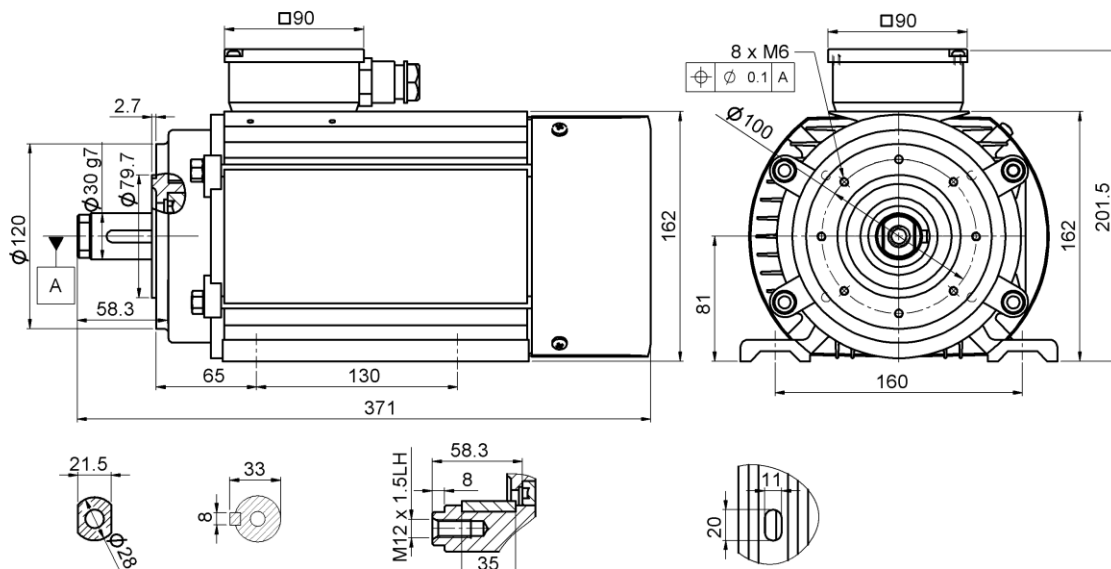
Basic supply voltage of the brake electric magnet – 98V.

### Technical Data Tables

TYP Type	Bemessungsleistung Rated Output		Spannung Voltage	Betriebsart Duty cycle	Betriebswerte bei Bemessungsleistung Parameters at Rated Output			Anlaufverhalten Starting performance			Gewicht Weight
	P2				U	n	I <sub>n</sub> at 400V	cosφ	I <sub>st</sub>	M <sub>st</sub>	
	kW	hp	V	min <sup>-1</sup>							
AX100L-2B	4.2	5.6	230/400	S6-40%	2750	9.4	0.83	33	30	38	22
AX100LX-4B	5.5	7.5	400/690	S6-40%	1360	12.5	0.85	47	55	65	30

### Overall and Joining Dimensions

#### AX100L-2B



**AX100LX-4B**

