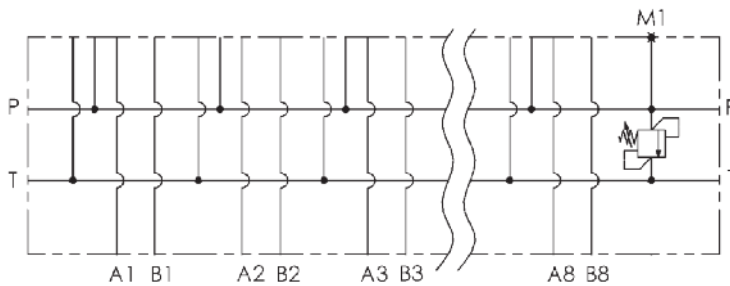
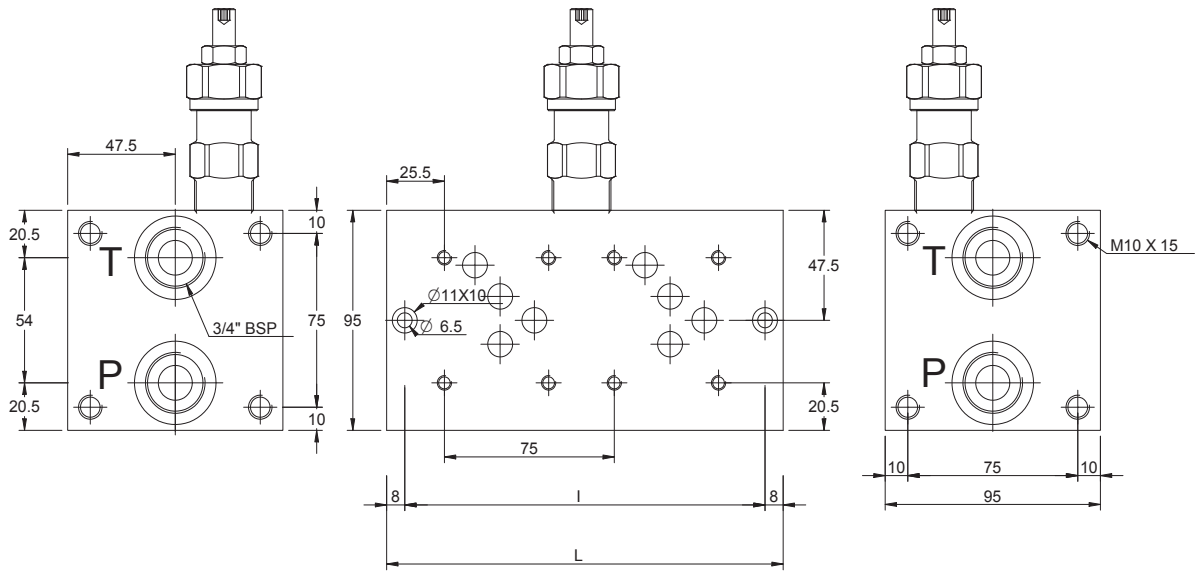
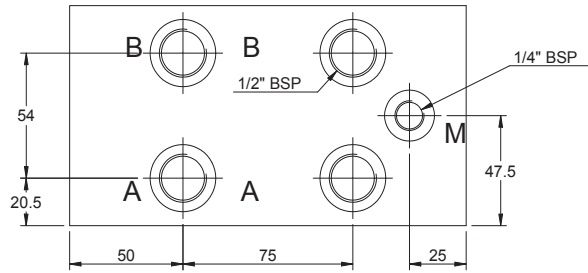


CETOP 5 - NG 10

BLOCCO MULTIPLO ATTACCHI LATERALI COLLEGAMENTO PARALLELO
MONOBLOCK WITH ON SIDE PORTS PARALLEL CONNECTION

Postaz. N° N° Stations	L	I	Kg	
solo versione 0 only version 0	1/0	100	84	6
solo ver. 1 or 2 only ver. 1 or 2	1/1	140	124	9
	2	175	159	11
	3	250	234	16
	4	325	309	21
	5	400	384	26
	6	425	409	31



Versione standard in alluminio
 Standard type with aluminium

Pressione massima di lavoro = 250 bar
 Max working pressure = 250 bar

Caratteristiche valvola di massima
 vedere a pagina 64
 For further information regarding relief
 valve please see page 64

Esempio codice di ordinazione - Ordering example

BMA 10 P 3 L # # - # — 10 = (35-100 bar)
 — 20 = (80-250 bar)

Monoblocco alluminio
 Aluminium monoblock

CETOP 5 - NG 10

Collegamento in parallelo
 Parallel connection

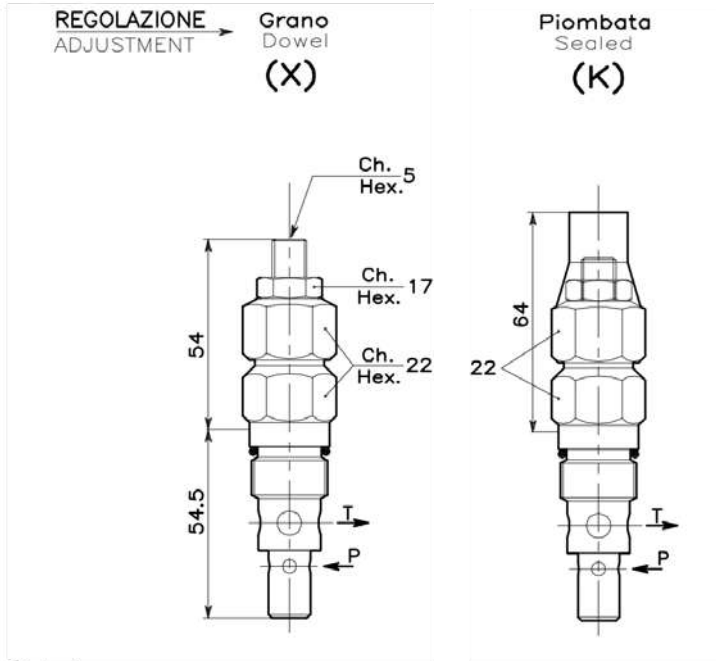
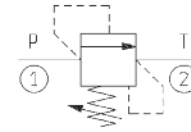
Attacchi - Ports (P - T = G3/4 A - B = G1/2)

z = predisposta per valvole
 machined for relief valve
 x = con valvola di max
 with built-in relief valve

1 - 2 - 3 - 4 - 5 - 6 - 7 - 8
 Numero postazioni - Stations number

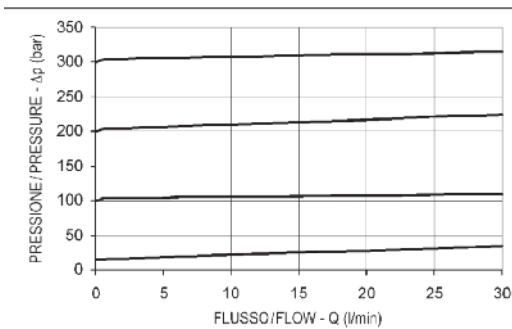
Configurazione con attacchi laterali
 On side ports

VALVOLA DI MASSIMA PRESSIONE DIRECT POPPET TYPE RELIEF



DATI TECNICI / TECHNICAL DATA

Coppie di serraggio Installation torque	46-51 Nm
Pressione di lavoro max Max working pressure	350 bar
Portata max Max flow	30 l/min
Peso Weight	0.17 kg



REGOLAZIONI / ADJUSTMENTS

Vite esterna
Socket screw



Piombata (plastica)
Sealed (plastic)

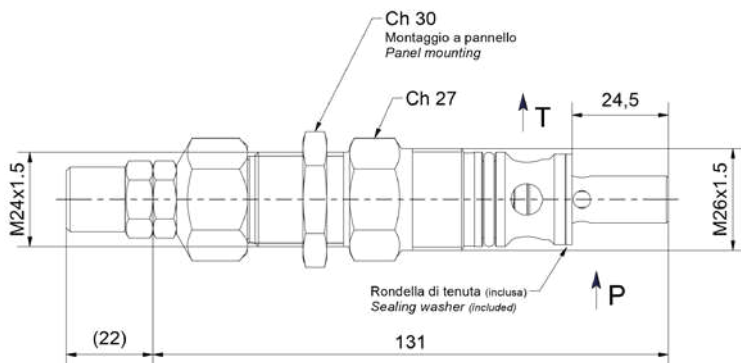
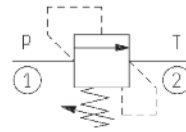


Esempio codice di ordinazione - *Ordering example*

002 747 0 X 0

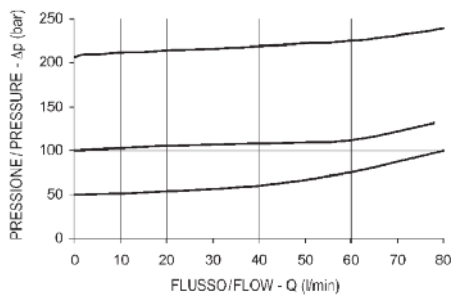
Campo taratura / Setting range			Regolazione Adjustment
747	746	745	
Campo taratura 5÷100 bar (molla colore blu) Setting range 5÷100 bar (blue spring)	Campo taratura 10÷210 bar (molla colore verde) Setting range 10÷210 bar (green spring)	Campo taratura 20÷350 bar (molla colore giallo) Setting range 20÷350 bar (yellow spring)	X Grano - Dowel K Piombata - Sealed

VALVOLA DI MASSIMA PRESSIONE
DIRECT POPPET TYPE RELIEF



DATI TECNICI / TECHNICAL DATA

Coppie di serraggio Installation torque	60-70 Nm
Pressione di lavoro max Max working pressure	250 bar
Portata max Max flow	80 l/min
Peso Weight	0.35 kg



REGOLAZIONI / ADJUSTMENTS

Vite esterna
Socket screw



Piombata (plastica)
Sealed (plastic)



Esempio codice di ordinazione - *Ordering example*

002 841 0 X 0

Campo taratura / Setting range			
841	842	843	844
Campo taratura 5÷50 bar Setting range 5÷50 bar	Campo taratura 10÷100 bar Setting range 10÷100 bar	Campo taratura 15÷150 bar Setting range 15÷150 bar	Campo taratura 25÷250 bar Setting range 25÷250 bar

Regolazione
Adjustment

X Grano - Dowel

K Piombata - Sealed