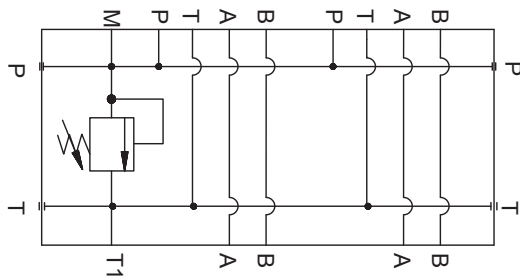
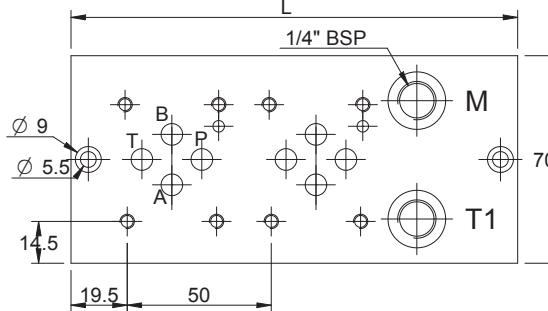
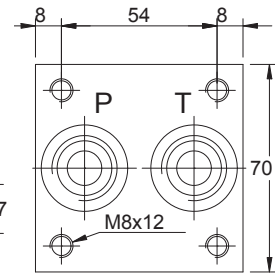
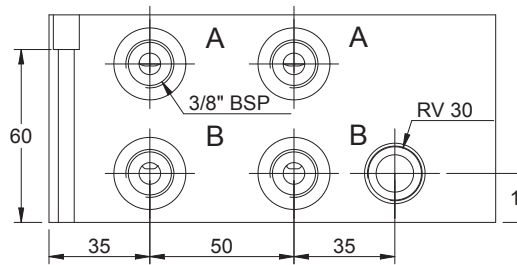
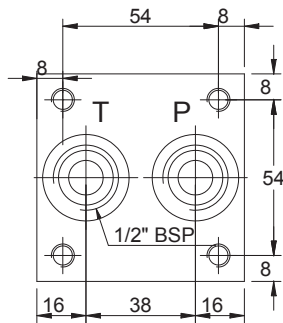
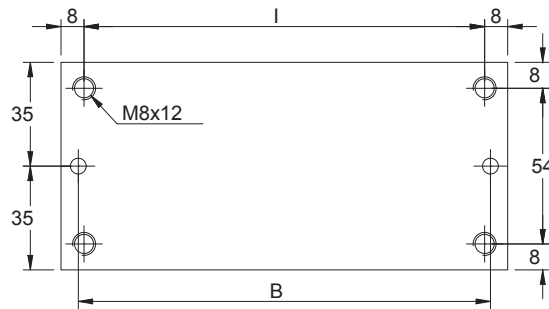


CETOP 3 - NG 06

BLOCCO MULTIPLO ATTACCHI LATERALI COLLEGAMENTO PARALLELO
MONOBLOCK WITH ON SIDE PORTS PARALLEL CONNECTION

Postaz. N° N° Stations	L	I	B	Kg
2	155	139	143	2,0
3	205	189	193	2,7
4	255	239	243	3,3
5	305	289	293	4,0
6	355	339	343	4,6
7	405	389	393	5,3
8	455	439	443	6,0
9	505	489	493	6,7
10	Special drawing			



Versione standard in alluminio
 Standard type with aluminium

Pressione massima di lavoro = 250 bar
 Max working pressure = 250 bar

Caratteristiche valvola di massima
 vedere a pagina 63
 For further information regarding relief
 valve please see page 63

Esempio codice di ordinazione - Ordering example

BMA 06 P 2 L # # - # — 05 = (5-50 bar)
 — 20 = (30-210 bar)
 — 35 = (100-350 bar)

Monoblocco alluminio
 Aluminium monoblock

CETOP 3 - NG 06

Collegamento in parallelo
 Parallel connection

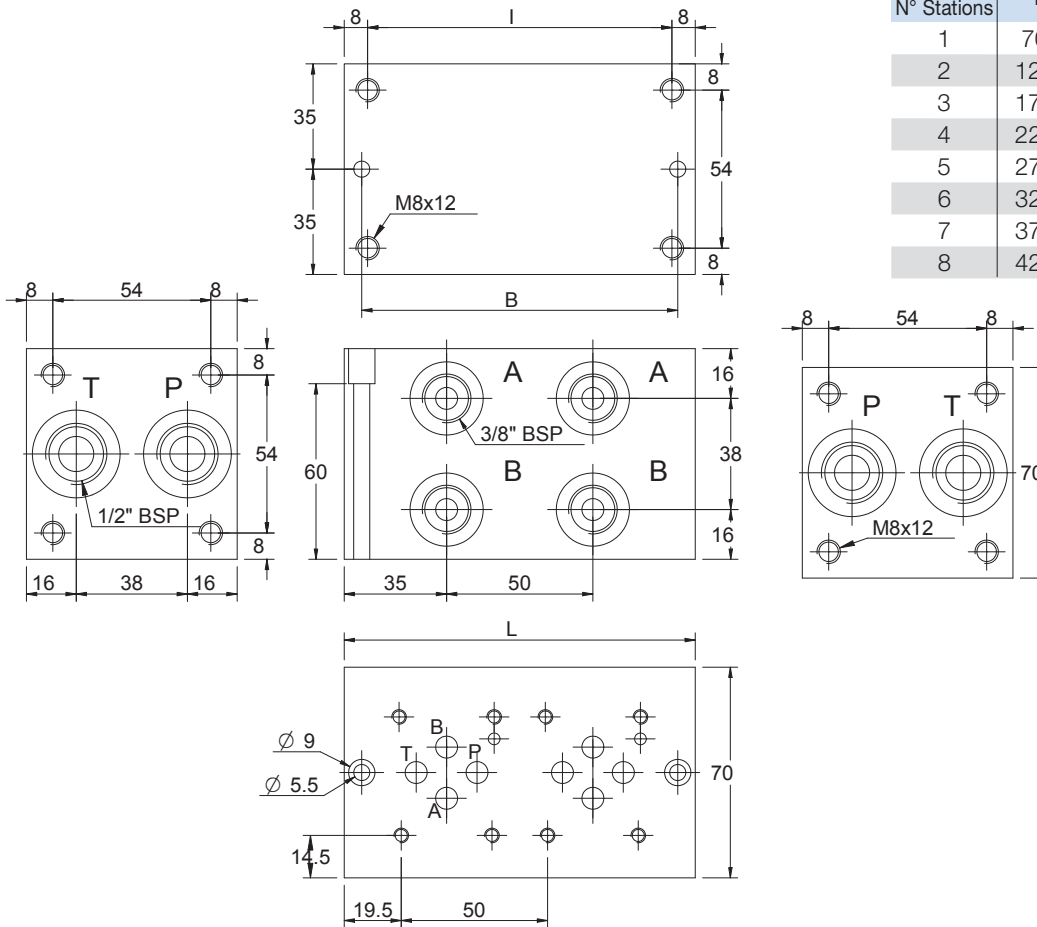
Attacchi - Ports (P - T = G1/2 A - B = G3/8)

z = predisposta per valvole
 machined for relief valve
 x = con valvola di max
 with built-in relief valve

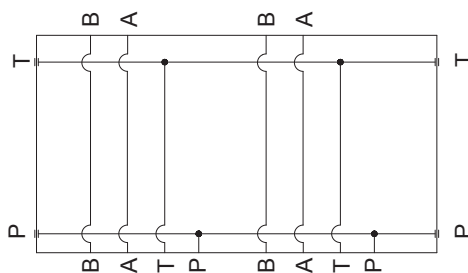
1 - 2 - 3 - 4 - 5 - 6 - 7 - 8 - 9 - 10
 Numero postazioni - Stations number

Configurazione con attacchi laterali
 On side ports

BLOCCO MULTIPLO ATTACCHI LATERALI COLLEGAMENTO PARALLELO
MONOBLOCK WITH ON SIDE PORTS PARALLEL CONNECTION



Postaz. N° N° Stations	L	I	B	Kg
1	70	54	58	0,9
2	120	104	108	1,5
3	170	154	158	2,2
4	220	204	208	2,8
5	270	254	258	3,5
6	320	304	308	4,2
7	370	354	358	4,8
8	420	404	408	5,5



Versione standard in alluminio
 Standard type with aluminium

Pressione massima di lavoro = 250 bar
 Max working pressure = 250 bar

Esempio codice di ordinazione - Ordering example

BMA 06 P 2 L #

Monoblocco alluminio
 Aluminium monoblock

CETOP 3 - NG 06

Collegamento in parallelo
 Parallel connection

Attacchi - Ports (P - T = G1/2 A - B = G3/8)

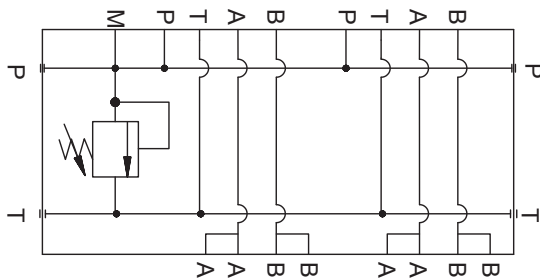
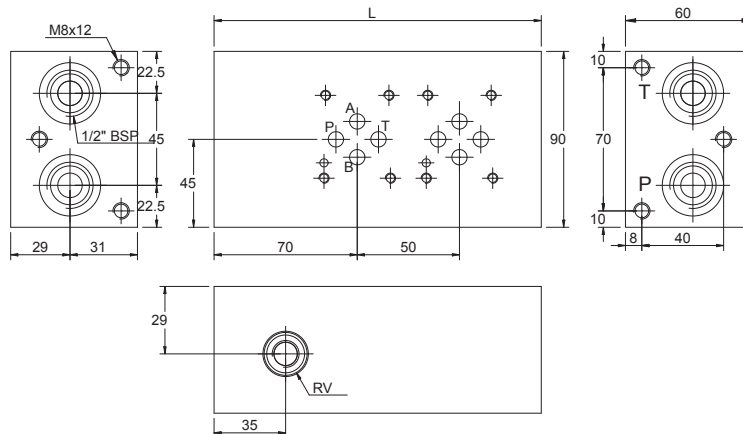
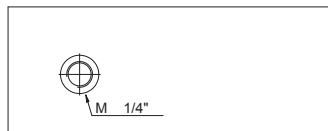
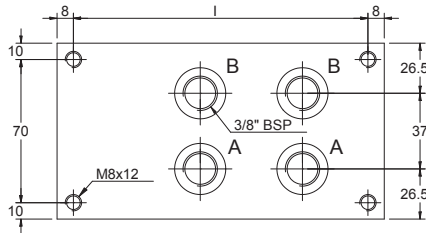
1 - 2 - 3 - 4 - 5 - 6 - 7 - 8
 Numero postazioni - Stations number

Configurazione con attacchi laterali
 On side ports

CETOP 3 - NG 06

BLOCCO MULTIPLO ATTACCHI POSTERIORI COLLEGAMENTO PARALLELO
MONOBLOCK WITH ON REAR PORTS PARALLEL CONNECTION

Postaz. N° N° Stations	L	I	Kg
2	160	144	2,3
3	210	194	3,0
4	260	244	3,7
5	310	294	4,5
6	360	344	5,2
7	410	394	5,9
8	460	444	7,0



Versione standard in alluminio
Standard type with aluminium

Pressione massima di lavoro = 250 bar
Max working pressure = 250 bar

Caratteristiche valvola di massima 63
For further information regarding relief valve please see page 63

Esempio codice di ordinazione - Ordering example

BMA 06 P 2 P # # - #

05 = (5-50 bar)

20 = (30-210 bar)

35 = (100-350 bar)

Monoblocco alluminio
Aluminium monoblock

CETOP 3 - NG 06

Collegamento in parallelo
Parallel connection

Attacchi - Ports (P - T = G1/2 A - B = G3/8)

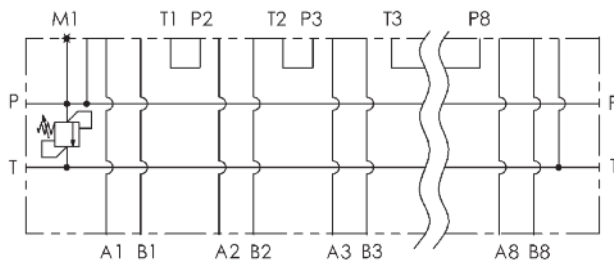
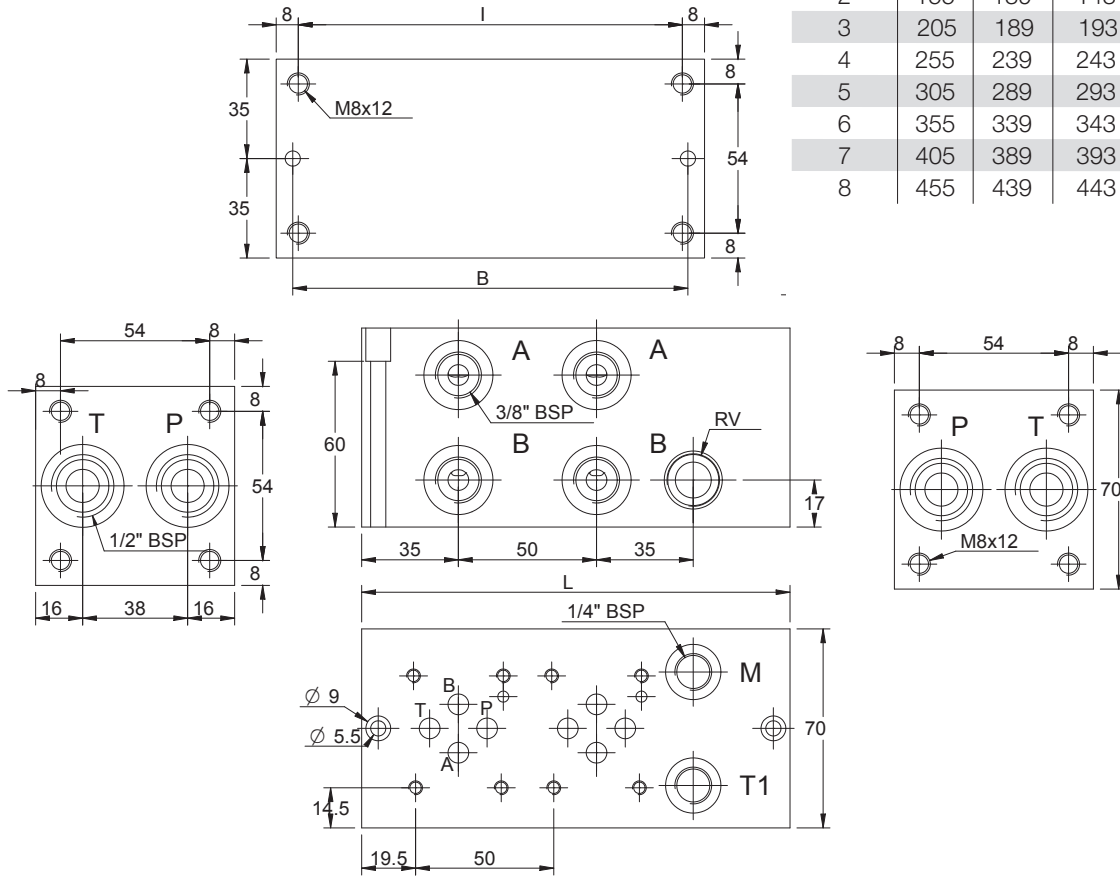
z = predisposta per valvole
machined for relief valve
x = con valvola di max
with built-in relief valve

1 - 2 - 3 - 4 - 5 - 6 - 7 - 8
Numero postazioni - Stations number

Configurazione con attacchi posteriori
On rear ports

BLOCCO MULTIPLO ATTACCHI LATERALI COLLEGAMENTO SERIE CETOP 3 - NG 06
MONOBLOCK WITH ON SIDE PORTS SERIES CONNECTION CETOP 3 - NG 06

Postaz. N° N° Stations	L	I	B	Kg
2	155	139	143	2,0
3	205	189	193	2,7
4	255	239	243	3,3
5	305	289	293	4,0
6	355	339	343	4,6
7	405	389	393	5,3
8	455	439	443	6,0



Versione standard in alluminio
Standard type with aluminium

Pressione massima di lavoro = 250 bar
Max working pressure = 250 bar

Caratteristiche valvola di massima vedere a pagina 63
For further information regarding relief valve please see page 63

Esempio codice di ordinazione - Ordering example

BMA 06 S 2 L # # - #

05 = (5-50 bar)
20 = (30-210 bar)
35 = (100-350 bar)

Monoblocco alluminio
Aluminium monoblock

CETOP 3 - NG 06

Collegamento in serie
Series connection

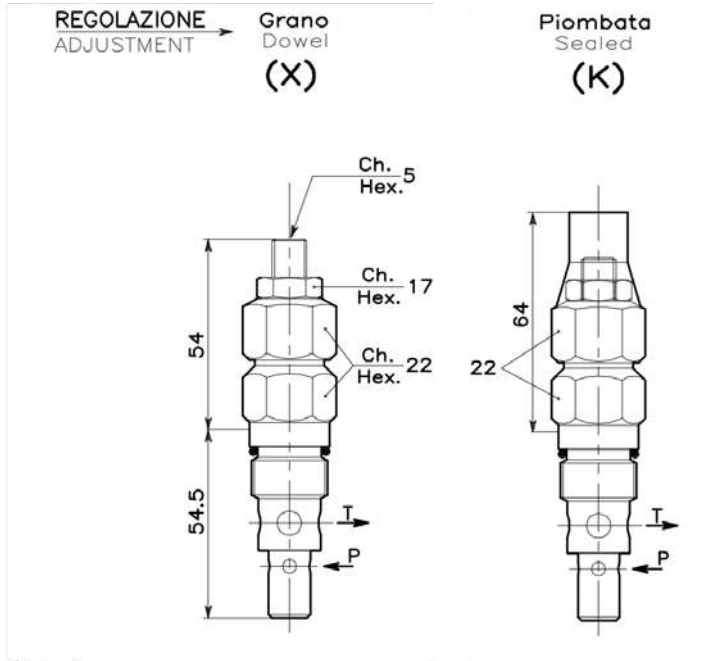
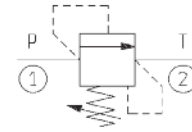
Attacchi - Ports (P - T = G1/2 A - B = G3/8)

z = predisposta per valvole
machined for relief valve
x = con valvola di max
with built-in relief valve

2 - 3 - 4 - 5 - 6 - 7 - 8
Numero postazioni - Stations number

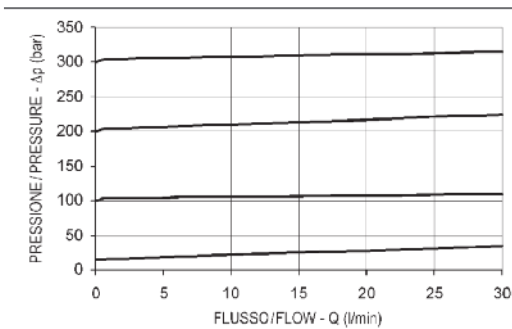
Configurazione con attacchi laterali
On side ports

VALVOLA DI MASSIMA PRESSIONE DIRECT POPPET TYPE RELIEF



DATI TECNICI / TECHNICAL DATA

Coppie di serraggio Installation torque	46-51 Nm
Pressione di lavoro max Max working pressure	350 bar
Portata max Max flow	30 l/min
Peso Weight	0.17 kg



REGOLAZIONI / ADJUSTMENTS

Vite esterna
Socket screw



Piombata (plastica)
Sealed (plastic)

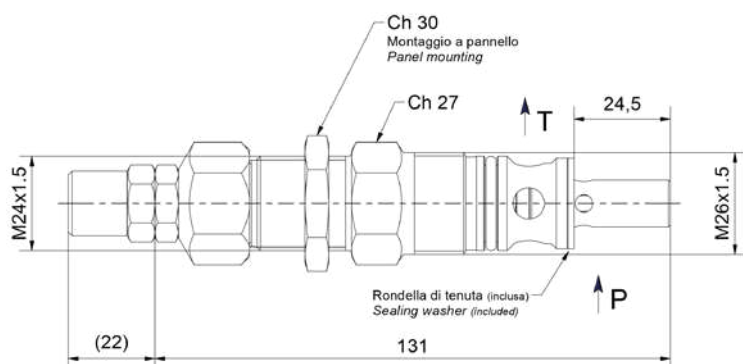
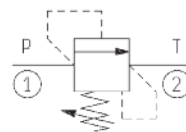


Esempio codice di ordinazione - *Ordering example*

002 747 0 X 0

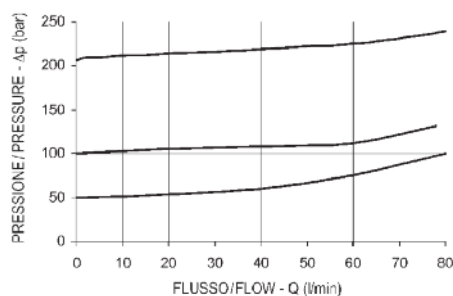
Campo taratura / Setting range			Regolazione Adjustment
747	746	745	
Campo taratura 5÷100 bar (molla colore blu) Setting range 5÷100 bar (blue spring)	Campo taratura 10÷210 bar (molla colore verde) Setting range 10÷210 bar (green spring)	Campo taratura 20÷350 bar (molla colore giallo) Setting range 20÷350 bar (yellow spring)	X Grano - Dowel K Piombata - Sealed

VALVOLA DI MASSIMA PRESSIONE
DIRECT POPPET TYPE RELIEF



DATI TECNICI / TECHNICAL DATA

Coppie di serraggio Installation torque	60-70 Nm
Pressione di lavoro max Max working pressure	250 bar
Portata max Max flow	80 l/min
Peso Weight	0.35 kg



REGOLAZIONI / ADJUSTMENTS

Vite esterna
Socket screw



Piombata (plastica)
Sealed (plastic)



Esempio codice di ordinazione - *Ordering example*

002 841 0 X 0

Campo taratura / Setting range			
841	842	843	844
Campo taratura 5÷50 bar Setting range 5÷50 bar	Campo taratura 10÷100 bar Setting range 10÷100 bar	Campo taratura 15÷150 bar Setting range 15÷150 bar	Campo taratura 25÷250 bar Setting range 25÷250 bar

Regolazione
Adjustment

X Grano - Dowel

K Piombata - Sealed