



**ORBITAL HYDRAULIC MOTOR**

**MODEL BMP**



[WWW.OLEODINAMICAMOZIONI.IT](http://WWW.OLEODINAMICAMOZIONI.IT)

## BMP INTRODUCTION

THIS SERIES OF MOTOR ARE SMALL VOLUME, ECONOMICAL TYPE, WHICH IS DESIGNED WITH SPOOL VALVE, WHICH ADAPT THE GEROLOR GEAR SET DESIGN AND PROVIDE COMPACT VOLUME, HIGH POWER AND LOWW WEIGHT.



1. ADVANCED MANUFACTURING DEVICES FOR THE GEROTOR GEAR SET, WHICH PROVIDE SMALL VOLUME, HIGH EFFICIENCY AND LONG LIFE.
2. SHAFT SEAL CAN BEAR HIGH PRESSURE OF MOTOR OF WHICH CAN BE USED IN PARALLEL OR IN SERIES.
3. ADVANCED CONSTRUCTION DESIGN, HIGH POWER AND LOW WEIGHT.

## BMP TECHNICAL DATA

TYPE		BMP 50	BMP 80	BMP 100	BMP 125	BMP 160	BMP 200	BMP 250	BMP 315	BMP 400
DISPLACEMENT (ML/R)		52.9	79.3	98.2	120.9	158.7	196.4	241.8	317.3	392.9
MAX.PRESSURE. DROP (MPA)	CONT.	14	14	14	14	14	14	12	10	8
	INT.	17.5	17.5	17.5	17.5	17.5	17.5	14	12	10
	PEAK.	22	22	22	22	22	22	20	15	13
MAX.TORQUE (N·M)	CONT.	97	148	183	229	295	364	369	404	416
	INT.	125	189	238	292	382	470	444	501	531
	PEAK.	149	222	276	340	445	532	568	555	596
MAX.SPEED (CONT.) (R/MIN)		755	750	610	490	375	305	245	185	150
MAX.FLOW (CONT.) (L/MIN)		40	60	60	60	60	60	60	60	60
MAX.OUTPUT.POWER (CONT.) (KW)		6.5	10	10	10	10	10	8	7	5.7
WEIGHT (KG)		5.6	5.7	5.9	6	6.2	6.4	6.6	6.9	7.4

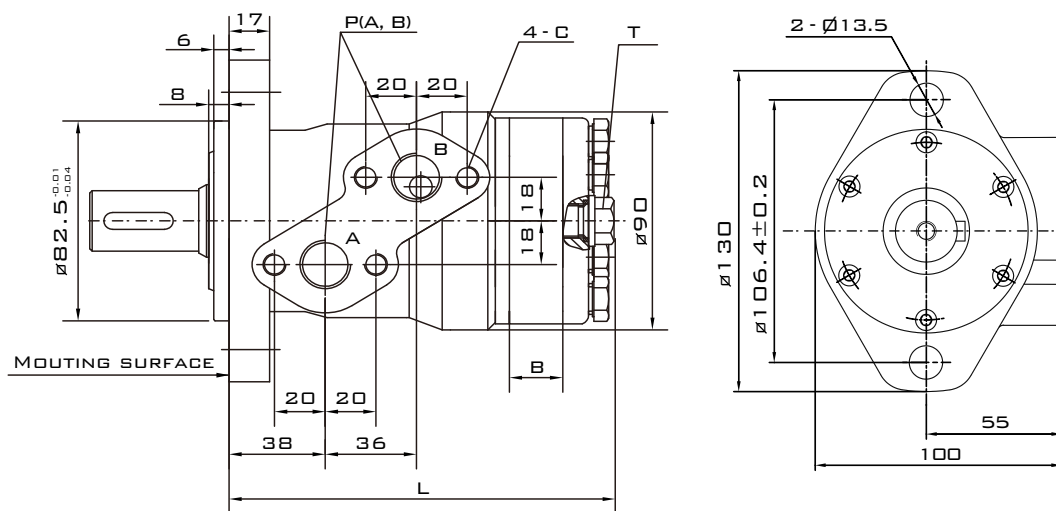
INTERMITTENT OPERATION THE PERMISSIBLE VALUES MAY OCCUR FOR MAX. 10% OF EVERY MINUTE.

PEAK LOAD: THE PERMISSIBLE VALUES MAY OCCUR FOR MAX. 1% OF EVERY MINUTE.



**BMP INSTALLATION**

TYPE	BMP-50	BMP-80	BMP-100	BMP-125	BMP-160	BMP-200	BMP-250	BMP-315	BMP-400
L	143.5	145	147	150	155	160	166	176	186
B	7	11	13	16	21	26	32	42	52



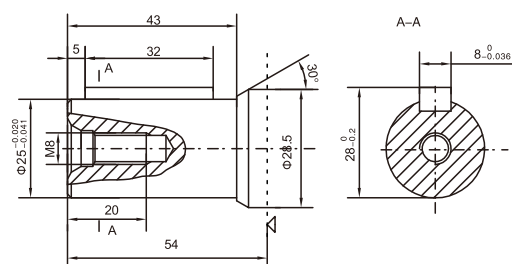
2 - HOLE OVAL FLANGE **All**

**BMP PORTS CODE**

CODE	PORTS	P(A,B)(DEEP)	C (DEEP)	T (DEEP)
Y10		G1/2 (15)	M8 (10)	G1/4 (12)

NOTE: P(A,B) — PORTS, C — MOUNTING THREAD, MOTOR MOUNTING SURFACE, T — DRAIN CONNECTION

**BMP SHAFT VERSION**



**P1:** Ø25 CYLINDRICAL SHAFT, PARALLEL KEY 8x7x32

# BMP

## HYDRAULIC MOTORS



### ORBITAL HYDRAULIC MOTOR

#### ORDER CODE



SERIES	BMP
DISPLACEMENT	50 80 100 125 160 200 250 315 400
OUTPUT	Ø25 CYLINDRICAL SHAFT, P1 = PARALLEL KEY 8X7X32

ROTATION DIRECTION  
O = OMIT = STANDART  
L = OPPOSITE

SPECIAL FEATURES  
O = OMIT = STANDART  
T7 = WITH DUSTPROOF RING  
T10 = WITH HIGH PRESSURE SEALS

PORTS  
A, B (DEEP)      DRAIN PORT T (DEEP)  
Y10 = G1/2(15)      G1/4(12)

FLANGE  
A11 = 2 - Ø13.5 OVAL FLANGE, PILOT Ø82.5X8