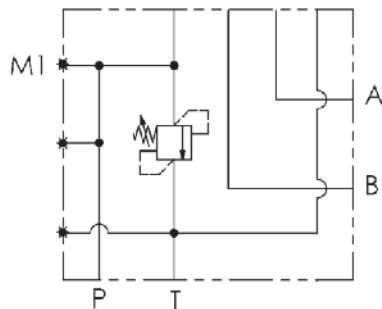
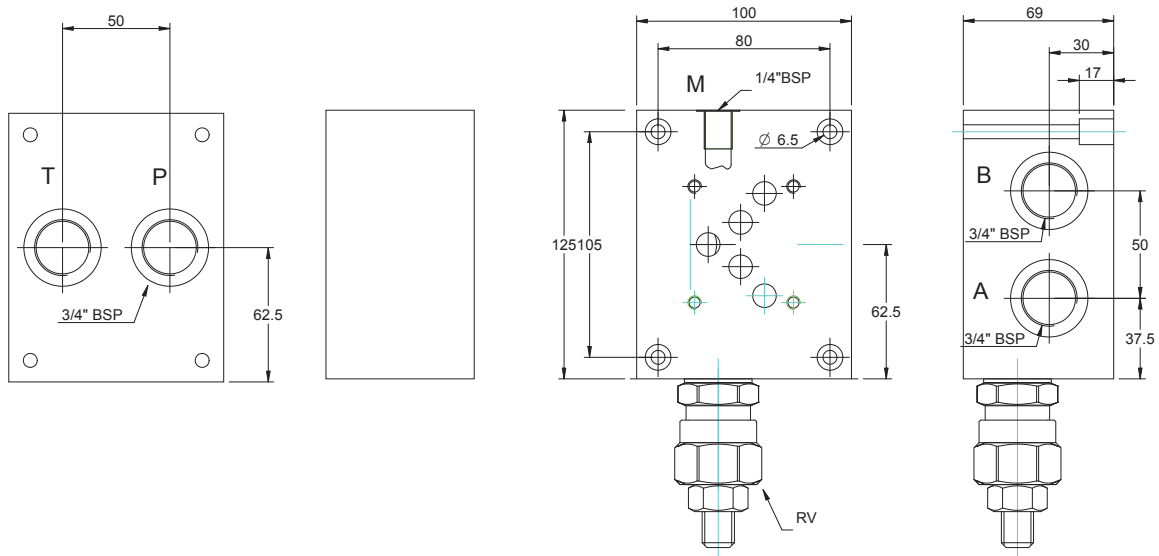


# CETOP 5 - NG 10

BASE CON COLLEGAMENTO P - T POSTERIORI E A - B LATERALI  
SINGLE SUBPLATE ON REAR P - T AND ON SIDE A - B



Versione standard in alluminio  
Standard type with aluminium

Pressione massima di lavoro = 250 bar  
Max working pressure = 250 bar

Caratteristiche valvola di massima  
vedere a pagina 64

For further information regarding relief  
valve please see page 64

## Esempio codice di ordinazione - Ordering example

BSA 10 # PL # - # ——— 10 = (35-100 bar)  
20 = (80-250 bar)

Base in alluminio  
Aluminium subplate

CETOP 5 - NG 10

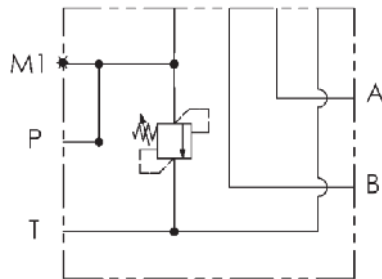
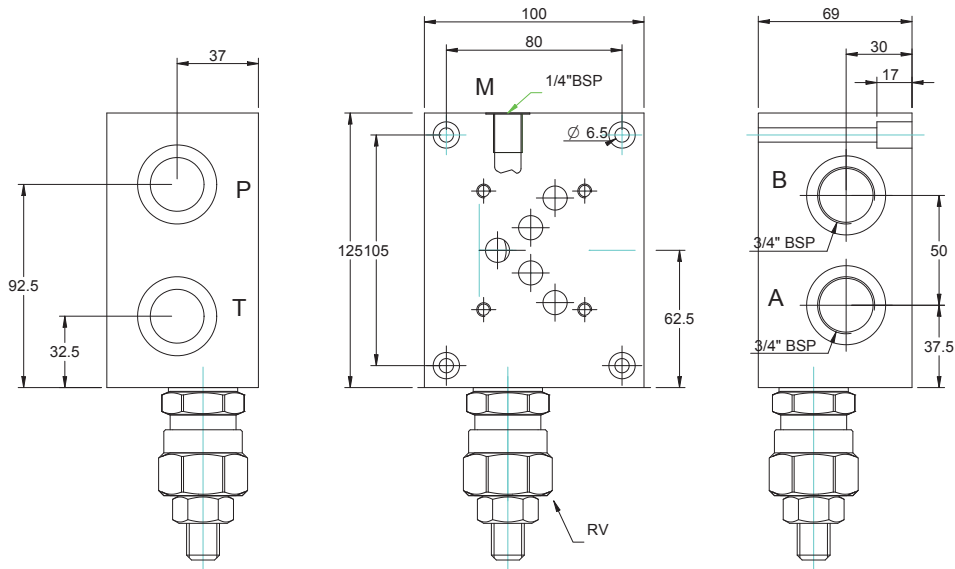
C = (P - T - A - B) G1/2

D = (P - T - A - B) G3/4

z = predisposta per valvole  
machined for relief valve  
x = con valvola di max  
with built-in relief valve

(P - T) posteriori e (A - B) laterali  
On rear (P - T) on side (A - B)

BASE CON COLLEGAMENTO P - T - A - B LATERALI  
SINGLE SUBPLATE ON SIDE P - T - A - B PORTS



Versione standard in alluminio  
Standard type with aluminium

Pressione massima di lavoro = 250 bar  
Max working pressure = 250 bar

Caratteristiche valvola di massima  
vedere a pagina 64  
For further information regarding relief  
valve please see page 64

## Esempio codice di ordinazione - *Ordering example*

**BSA 10 # LL # - #** — 10 = (35-100 bar)  
20 = (80-250 bar)

Base in alluminio  
Aluminium subplate

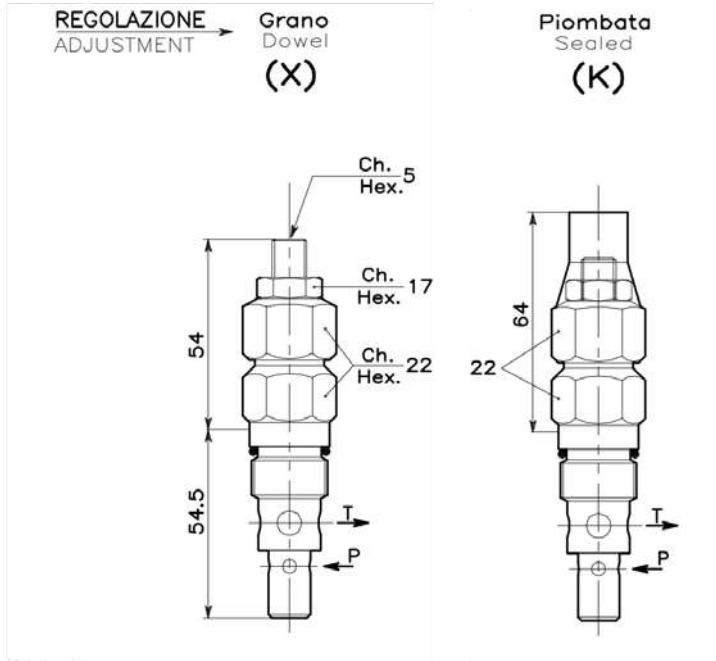
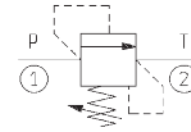
CETOP 5 - NG 10

C = (P - T - A - B) G1/2  
D = (P - T - A - B) G3/4

z = predisposta per valvole  
machined for relief valve  
x = con valvola di max  
with built-in relief valve

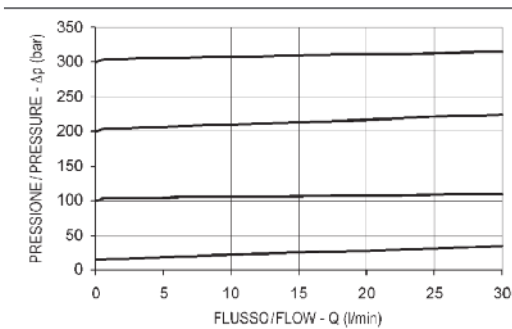
(P - T - A - B) laterali  
(P - T - A - B) on side

## VALVOLA DI MASSIMA PRESSIONE DIRECT POPPET TYPE RELIEF



### DATI TECNICI / TECHNICAL DATA

Coppie di serraggio Installation torque	46-51 Nm
Pressione di lavoro max Max working pressure	350 bar
Portata max Max flow	30 l/min
Peso Weight	0.17 kg



### REGOLAZIONI / ADJUSTMENTS

Vite esterna  
Socket screw



Piombata (plastica)  
Sealed (plastic)

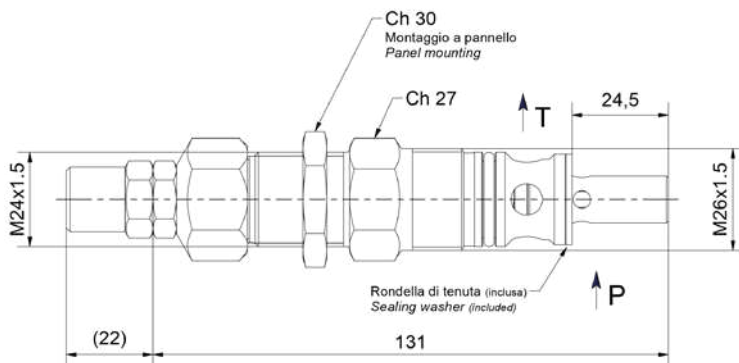
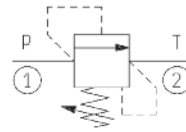


### Esempio codice di ordinazione - *Ordering example*

002 747 0 X 0

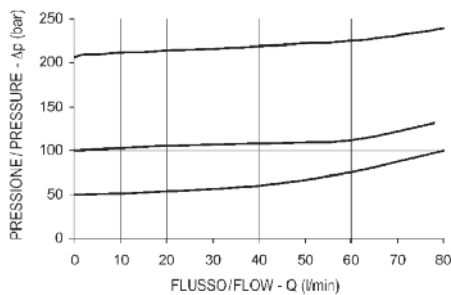
Campo taratura / Setting range			Regolazione Adjustment
747	746	745	
Campo taratura 5÷100 bar (molla colore blu) Setting range 5÷100 bar (blue spring)	Campo taratura 10÷210 bar (molla colore verde) Setting range 10÷210 bar (green spring)	Campo taratura 20÷350 bar (molla colore giallo) Setting range 20÷350 bar (yellow spring)	X Grano - Dowel K Piombata - Sealed

VALVOLA DI MASSIMA PRESSIONE  
DIRECT POPPET TYPE RELIEF



DATI TECNICI / TECHNICAL DATA

Coppie di serraggio Installation torque	60-70 Nm
Pressione di lavoro max Max working pressure	250 bar
Portata max Max flow	80 l/min
Peso Weight	0.35 kg



REGOLAZIONI / ADJUSTMENTS

Vite esterna  
Socket screw



Piombata (plastica)  
Sealed (plastic)



Esempio codice di ordinazione - *Ordering example*

002 841 0 X 0

Campo taratura / Setting range			
841	842	843	844
Campo taratura 5÷50 bar Setting range 5÷50 bar	Campo taratura 10÷100 bar Setting range 10÷100 bar	Campo taratura 15÷150 bar Setting range 15÷150 bar	Campo taratura 25÷250 bar Setting range 25÷250 bar

Regolazione  
Adjustment

X Grano - Dowel

K Piombata - Sealed