

AM.5.RGT... MODULAR VALVES FOR REGENERATIVE CIRCUIT CETOP 5



AM.5.RGT...

SCREWS AND STUDS

CH. IV PAGE 36

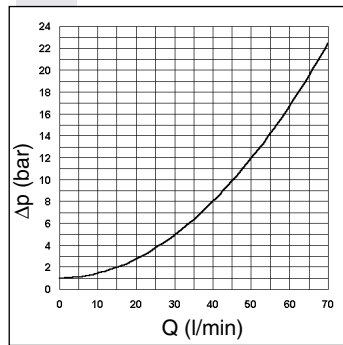
This modular system produces a regenerative circuit to increasing the actuator (differential cylinder) exit speed as shown in the diagram. In particular, if a cylinder is used with a 2:1 ratio for operating surfaces, the exit and re-entry speeds are the same.

Max. operating pressure	350 bar
Max. flow at port A/B/P/T	70 l/min
Hydraulic fluids	Mineral oils DIN 51524
Fluid viscosity	10 ÷ 500 mm ² /s
Fluid temperature	-25°C ÷ 75°C
Ambient temperature	-25°C ÷ 60°C
Max. contamination level	class 10 in accordance with NAS 1638 with filter $\beta_{25} \geq 75$
Weight	2,1 Kg

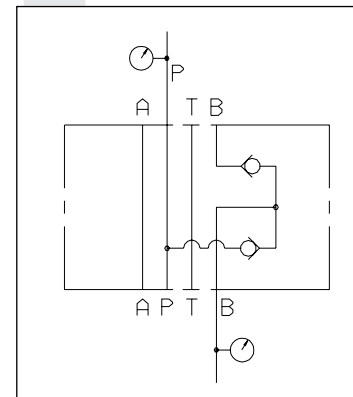
ORDERING CODE

AM	Modular valve
5	CETOP 5/NG10
RGT	For regenerative circuit
A	Size of check valves 1/2" BSP
1	Opening pressure 1 bar
**	00 = No variant V1 = Viton
1	Serial No.

PRESSURE DROPS B → P



HYDRAULIC SYMBOL



4

OVERALL DIMENSIONS

