

# BS.5.R\*A... SPECIAL SUBPLATE MOUNTINGS WITH AUTOMATIC EXCLUSION REGENERATING CIRCUIT



**BS.5.RGA... / BS.5.RIA...**

AD.5.I...

CH. I PAGE 42

These special subplates, with relief valve, have integrated a regenerative circuit which disengages automatically with increasing load.

This circuit allows a fast movement of the cylinder with low working pressure followed by an automatic disengagement of the regenerative function at the set pressure, consequent a higher hydraulic force is available.

Furthermore in the BS.5.RIA version the automatic reciprocating valve allows a continuous movement of the cylinder till the stop of the pump.

The reciprocating valve has a preferential position which allows the cylinder to begin always in the same position at the start of the working cycle (P → B).

This systems are particularly useful for garbage compactors or small presses.

Max. pump flow (suggested)	30 l/min
Max. flow with regenerative connected	100 l/min
Max. operating pressure (relief valve)	350 bar
Max. operating pressure (exclusion)	200 bar
Hydraulic fluids	Mineral oils DIN 51524
Fluid viscosity	10 ÷ 500 mm <sup>2</sup> /s
Fluid temperature	-25°C ÷ 75°C
Ambient temperature	-25°C ÷ 60°C
Max. contamination level	class 10 in accordance with NAS 1638 with filter $\beta_{25} \geq 75$
Weight BS.5.RGA... version	Kg 5,7
Weight BS.5.RIA... version	Kg 9,4

### TYPICAL INSTALLATION VALUES

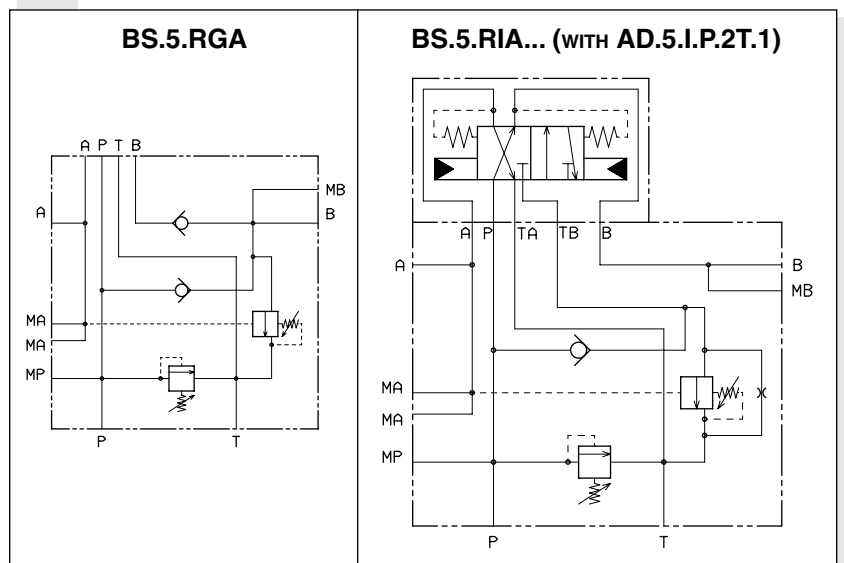
- Cylinder area ratio ( $\alpha$ ) **1,6 : 1**
- Pump flow (QP) **30 l/min**
- Type of oil **46 cSt a 40°**
- Regenerative flow (QR) **80 l/min** (for RGA standard subplate)  
**75 l/min** (for RIA standard subplate)
- Min. exclusion pressure setting **70 bar**
- Max exclusion pressure setting **200 bar**
- Exclusion pressure drops **6 bar**

### ORDERING CODE

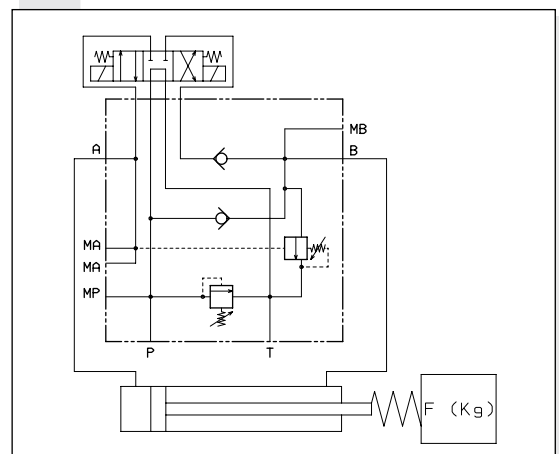
<b>BS</b>	Single subplate mounting
<b>5</b>	CETOP 5/NG10
<b>***</b>	<b>RGA</b> = Automatic exclusion regenerating circuit with presetting for AD.5.E...
	<b>RIA</b> = Automatic exclusion regenerating circuit with AD.5.I.P.2T.1 included
<b>U3</b>	Exclusion range 20 ÷ 200 - see note (*)
<b>*</b>	Adjustment (relief valve) <b>M</b> = Plastic knob <b>C</b> = Grub screw
<b>*</b>	Max relief setting ranges <b>2</b> = max. 140 bar ( <b>yellow spring</b> ) <b>3</b> = max. 350 bar ( <b>green spring</b> )
<b>**</b>	<b>00</b> = No variant
<b>2</b>	Serial No

(\*) These values depend on the hydraulic circuit configuration: flow, dimensions and system's frictions.

### HYDRAULIC SYMBOLS



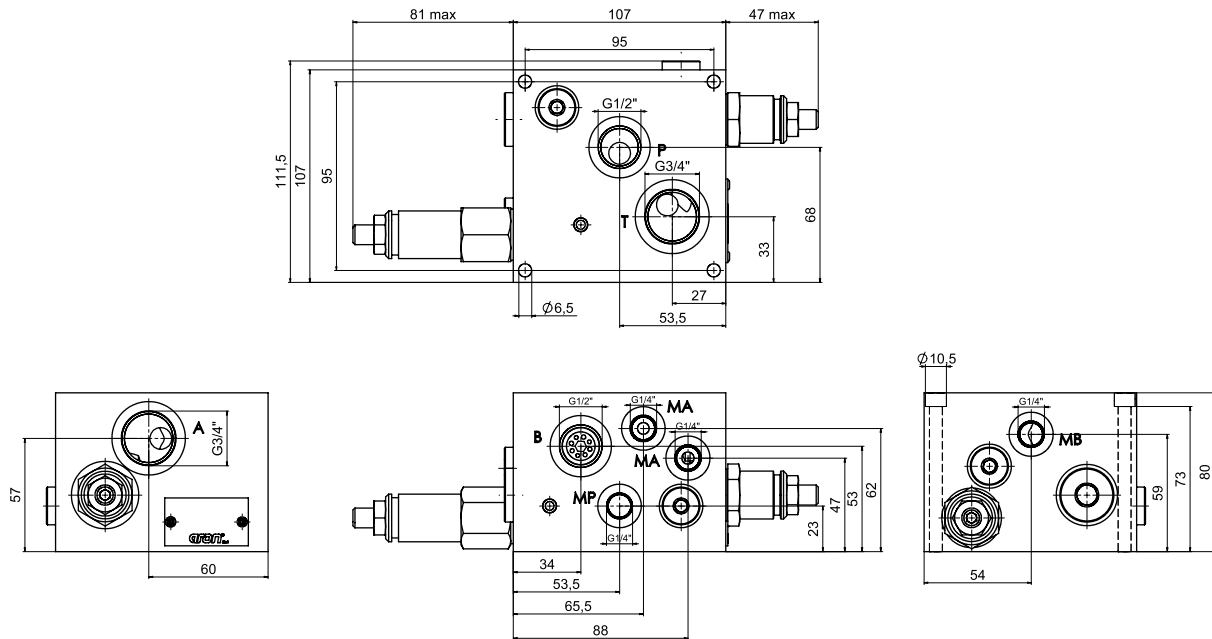
### TYPICAL INSTALLATION FOR BS.5.RGA



**BS.5.RGA... / BS.5.RIA... SPECIAL SUBPLATE MOUNTINGS WITH  
AUTOMATIC EXCLUSION REGENERATING CIRCUIT**

**OVERALL DIMENSIONS**

**BS.5.RGA...**



**BS.5.RIA... WITH AD.5.I.P.2.T.1**

