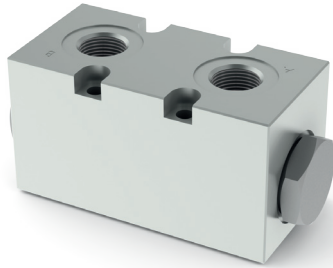


CM3P

MODULAR PILOT OPERATED CHECK BANKABLE VALVES



CM3P type modular check bankable valves allow one way free flow by raising a conical shutter, while in the opposite direction the fluid can return by means of a small piston piloted by the pressure in the other line.

- Available on single A or B lines, and on double A and B lines (see hydraulic symbols).
- Threaded ports G3/8" or 9/16"-18UNF.
- Cast iron zinc plated body.

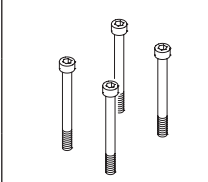
ORDERING CODE

CM	Modular bankable valve
3	Size
P	Piloted check valve
*	Port sizes: 1 = G3/8" 2 = 9/16"-18UNF
**	Control on lines A / B / AB
*	Minimum opening pressure 1 = 1 bar 5 = 5 bar
**	00 = No variant V1 = Viton
1	Serial No.

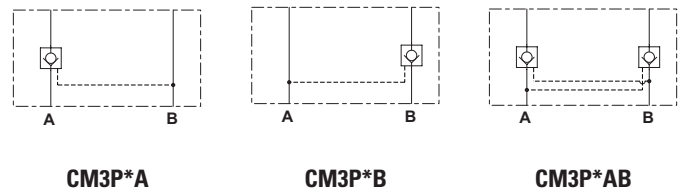
FEATURES

Max. operating pressure	350 bar
Minimum opening pressure spring 1	1 bar
Minimum opening pressure spring 5	5 bar
Piloting ratio	1:4
Max. flow	40 l/min
Hydraulic fluids	Mineral oils DIN 51524
Fluid viscosity	10 ÷ 500 mm ² /s
Fluid temperature	-20°C ÷ 75° C
Ambient temperature	-20°C ÷ 60°C
Max. contamination level (filter $\beta_{25} \geq 75$)	ISO 4406:1999: class 21/19/16 NAS 1638: class 10
Weight	1.25 kg

Accessories

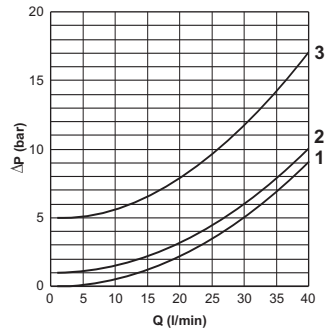
 Tightening torque 5 Nm	Elements	Code screws (x 4)	Type UNI 5931 - 8.8
	CM3P	Q26074072	M5x50
CM3P + V0800005	Q26074252	M5x95	

HYDRAULIC SYMBOLS



CM3P

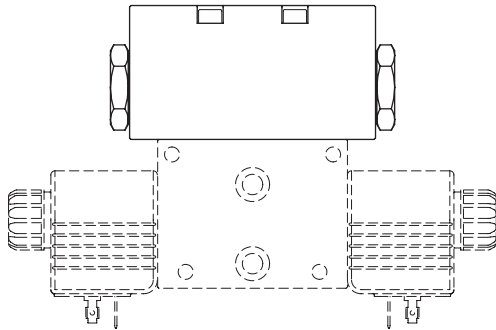
PRESSURE DROPS



- 1 = Piloted side flow
- 2 = 1 bar
- 3 = 5 bar

The fluid used is a mineral based oil with a viscosity of 46 mm²/s at 40°C. The tests have been carried out with a fluid of a 40°C.

MOUNTING EXAMPLE WITH CDC3 VALVE



OVERALL DIMENSIONS

