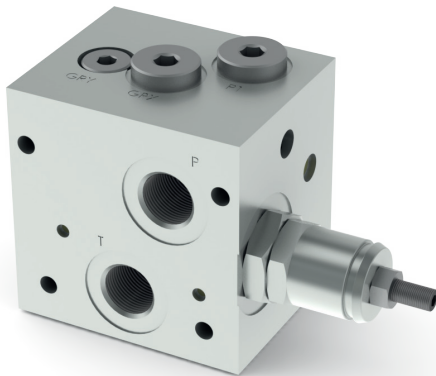
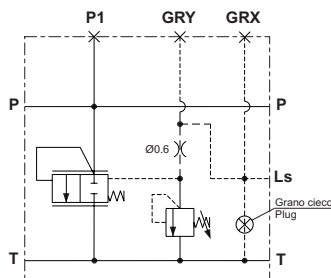


FE02Q

INLET MODULE UNITS WITH LS LINE, COMPENSATOR AND PRESSURE RELIEF VALVE



HYDRAULIC SYMBOL



Module units FE02Q with pressure compensator for fixed displacement pumps and CMP-MC/MS adjustable pressure relief valve on LS line

- Manual adjustment with a grub screw.
- Screw with orifice for LS bleeding.
- Threaded ports P-T, G3/8" and LS, G1/4".
- Maximum flow 20 l/min.
- Aluminum body.

FEATURES

Max. operating pressure	250 bar
Max. Flow	20 l/min
Hydraulic fluid	DIN 51524 Mineral oils
Fluid viscosity	10 ÷ 500 mm ² /s
Fluid temperature	-25°C ÷ 75°C
Ambient temperature	-25°C ÷ 60°C
Max. contamination level (filter $\beta_{25} \geq 75$)	ISO 4406:1999: class 21/19/16 NAS 1638: class 10
Weight	1 kg

Pressure relief valve (CMP-MC/MS)

Setting range (*):	
Spring 1	max 50 bar
Spring 2	max 90 bar
Spring 3	max 190 bar
Spring 4	max 290 bar

(*) The minimum permissible setting pressure depending on the spring: see curves.

ORDERING CODE

FE02Q Inlet module unit (up to 20 l/min) with compensator and pressure relief valve

3 Size

***** Ports:
1 = G3/8" (P,T ports)
G1/4" (LS port)

C Adjustment:
C = Grub screw

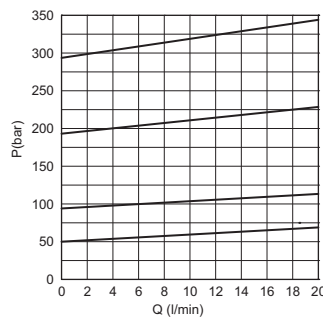
***** Setting ranges
1 = 0 ÷ 50 bar (white spring)
2 = 35 ÷ 90 bar (green spring)
3 = 75 ÷ 190 bar (yellow spring)
4 = 160 ÷ 290 bar (** (red spring)

****** **00** = No variant
V1 = Viton

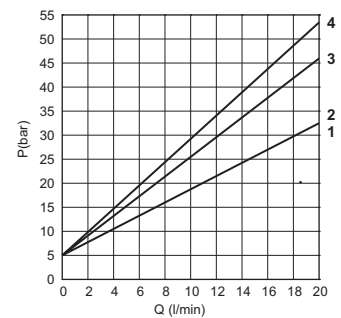
1 Serial No.

(**) Setting referred to the maximum pressure reached from the relief valve. **Do not exceed the maximum working pressure 250 bar.**

PRESSURE-FLOW RATE

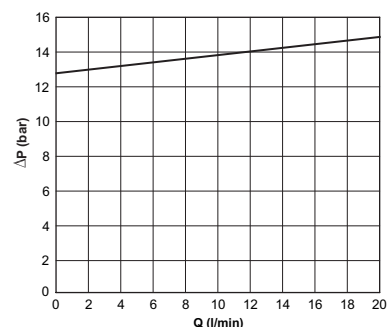


MIN. SETTING PRESSURE



1 = 0÷50 bar - 2 = 35÷90 bar - 3 = 75÷190 bar - 4 = 160÷290 bar
 Fluid used: mineral based oil with viscosity 46 mm²/s at 40°C.

PRESSURE COMPENSATOR



To obtain a correct compensation the inlet flow must be 8% greater the sum of the regulated flow.

FE02Q

OVERALL DIMENSIONS

