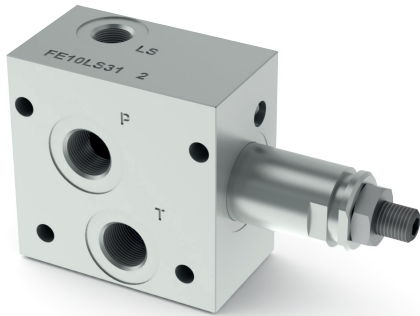


FE10LS

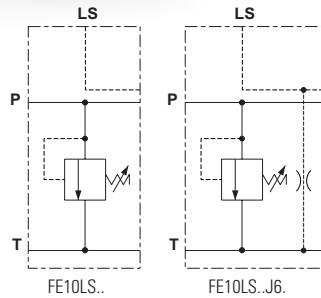
INLET MODULE UNITS WITH LS LINE WITH PRESSURE RELIEF VALVE



Module units FE10LS with LS line and CMP10 adjustable pressure relief valve.

- Manual adjustment with a grub screw or plastic knob.
- Threaded ports P-T, G3/8" and LS, G1/4".
- Maximum flow 40 l/min.
- Aluminum body.

HYDRAULIC SYMBOL



ORDERING CODE

FE10LS Inlet module unit (up to 40 l/min) with pressure relief valve and LS line

3 Size

1 Ports:
1 = G3/8" (P,T ports)
 G1/4" (LS port)

***** Adjustment:
M = Plastic knob
C = Grub screw

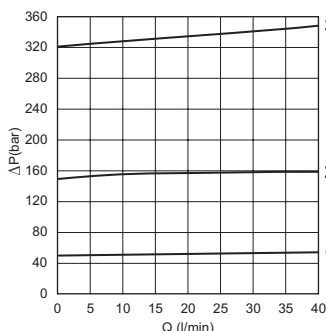
***** Setting ranges
1 = max. 50 bar (white spring)
2 = max. 150 bar (yellow spring)
3 = max. 320 bar ** (green spring)

****** **00** = No variant
J6 = With LS bleed
V1 = Viton

2 Serial No.

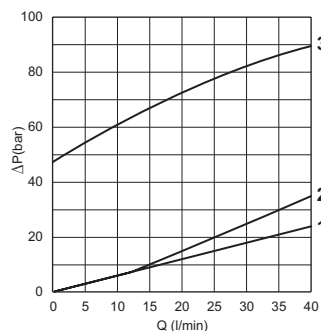
(**) Setting referred to the maximum pressure reached from the relief valve. Do not exceed the maximum working pressure 250 bar.

PRESSURE-FLOW RATE



1 = max 50 bar - **2** = max 150 bar - **3** = max 320 bar
 Fluid used: mineral based oil with viscosity 46 mm²/s at 40°C.

MIN.SETTING PRESSURE



FEATURES

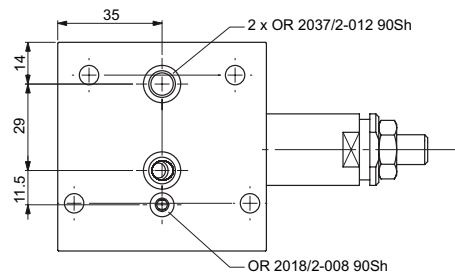
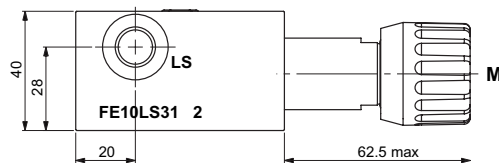
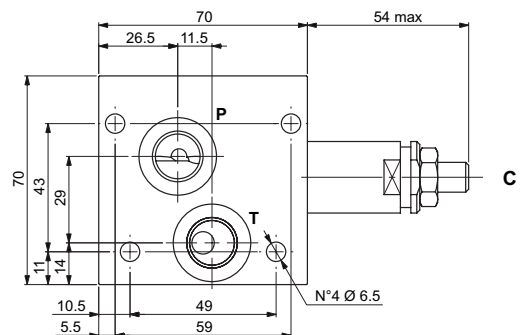
Max. operating pressure	250 bar
Max. Flow	40 l/min
Hydraulic fluid	DIN 51524 Mineral oils
Fluid viscosity	10 ÷ 500 mm ² /s
Fluid temperature	-25°C ÷ 75°C
Ambient temperature	-25°C ÷ 60°C
Max. contamination level (filter β ₂₅ ≥ 75)	ISO 4406:1999: class 21/19/16 NAS 1638: class 10
Weight	0.6 kg

Pressure relief valve (CMP10...)

Setting range (*):	
Spring 1	max 50 bar
Spring 2	max 150 bar
Spring 3	max 320 bar

(*) The minimum permissible setting pressure depending on the spring: see curves.

OVERALL DIMENSIONS



C = Grub screw
 M = Plastic knob