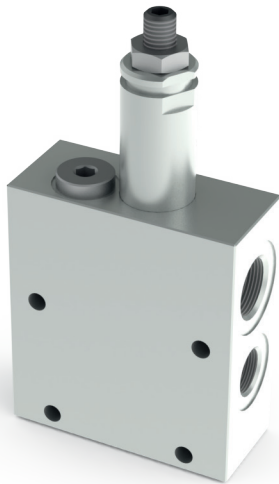


# FE10S

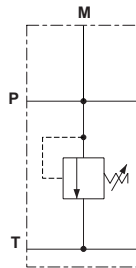
## INLET MODULE UNITS WITH SIDE PORTS AND PRESSURE RELIEF VALVE



Inlet module units FE10S with side ports and CMP10 adjustable pressure relief valve.

- Manual adjustment with a grub screw or plastic knob.
- Threaded ports P-T, G3/8" or G3/8"(P) - G1/2"(T).
- Maximum flow 40 l/min.
- Aluminum body.

### HYDRAULIC SYMBOL



### FEATURES

Max. operating pressure	250 bar
Max. Flow	40 l/min
Hydraulic fluid	DIN 51524 Mineral oils
Fluid viscosity	10 ÷ 500 mm <sup>2</sup> /s
Fluid temperature	-25°C ÷ 75°C
Ambient temperature	-25°C ÷ 60°C
Max. contamination level (filter β <sub>25</sub> ≥ 75)	ISO 4406:1999: class 21/19/16 NAS 1638: class 10
Weight	0.6 kg

### Pressure relief valve (CMP10...)

Setting range (*):	
Spring 1	max 50 bar
Spring 2	max 150 bar
Spring 3	max 320 bar

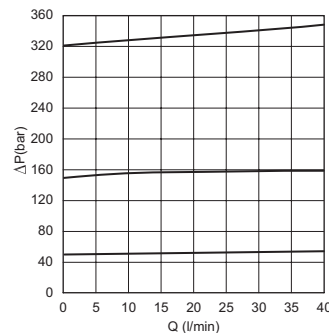
(\*) The minimum permissible setting pressure depending on the spring: see curves.

### ORDERING CODE

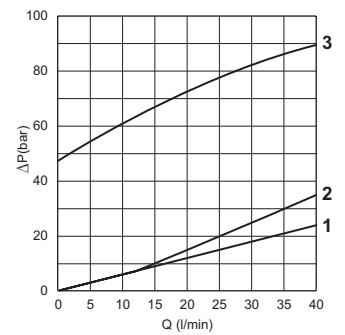
<b>FE10S</b>	Inlet module unit with side ports and pressure relief valve (up to 40 l/min)
<b>3</b>	Size
<b>*</b>	Ports: <b>1</b> = G3/8" ports P,T <b>5</b> = G3/8" port P - G1/2" port T
<b>*</b>	Adjustment: <b>M</b> = Plastic knob <b>C</b> = Grub screw
<b>*</b>	Setting ranges <b>1</b> = max. 50 bar (white spring) <b>2</b> = max. 150 bar (yellow spring) <b>3</b> = max. 320 bar (** (green spring)
<b>**</b>	<b>00</b> = No variant <b>V1</b> = Viton
<b>1</b>	Serial No.

(\*\*) Setting referred to the maximum pressure reached from the relief valve. Do not exceed the maximum working pressure 250 bar.

### PRESSURE-FLOW RATE



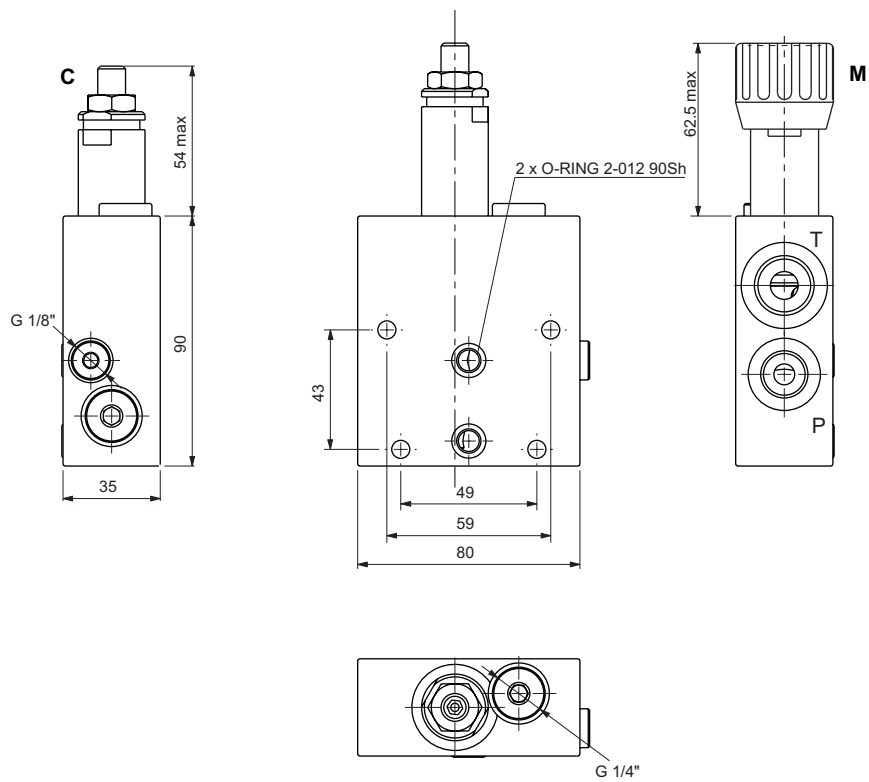
### MIN.SETTING PRESSURE



**1** = max 50 bar - **2** = max 150 bar - **3** = max 320 bar  
Fluid used: mineral based oil with viscosity 46 mm<sup>2</sup>/s at 40°C.

# FE10S

## OVERALL DIMENSIONS



C = Grub screw  
M = Plastic knob