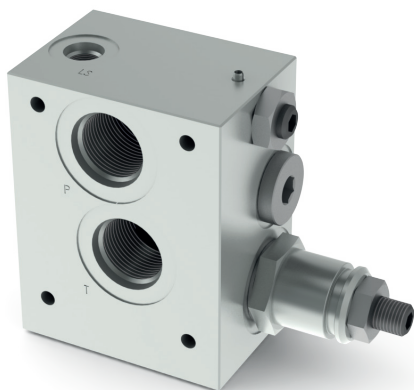


FEH30LS

CLOSED CENTER INLET MODULE FOR VARIABLE DISPLACEMENT LOAD SENSING PUMPS



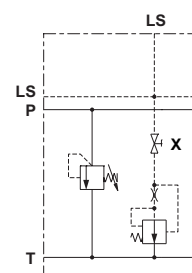
Closed center inlet module units FEH30LS for variable displacement Load Sensing pumps with pressure relief valve CMP30 and a pressure compensated load sensing signal bleed to minimize system losses even at high operating pressures. Signal bleed can be closed in case it is not required.

- Manual adjustment with a grub screw.
- Threaded ports P-T sizes G1/2" or 7/8" 14UNF; LS ports, G1/4" or 7/16" 20UNF
- Maximum flow 80 l/min.
- Cast iron zinc plated body.

ORDERING CODE

FEH30	Inlet module units with pressure relief valve
LS	With LS signal
3	Size
*	Ports: 3 = G1/2" (P,T ports) G1/4" (LS port) 4 = 7/8" - 14UNF (P,T ports) 7/16" - 20UNF (LS port)
*	Adjustment: M = Plastic knob C = Grub screw
*	Setting ranges: 1 = max 50 bar 2 = max 140 bar 3 = max 350 bar
**	Variants: 00 = No variants V1 = Viton
1	Serial No.

HYDRAULIC SYMBOL



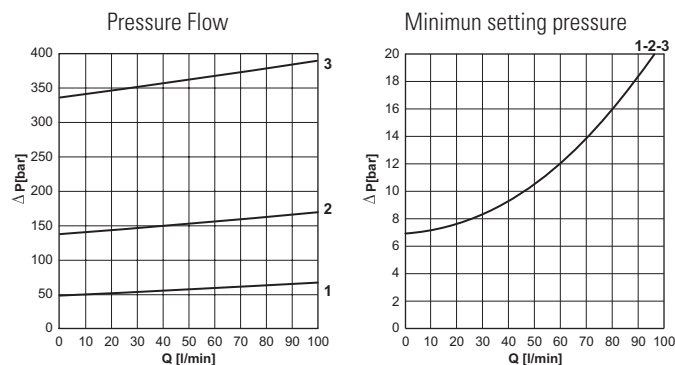
"X" Tap for LS bleed plug

FEATURES

Max. operating pressure	300 bar
Setting ranges for pressure relief valve	Spring 1: max 50 bar Spring 2: max 140 bar Spring 3: max 350 bar
Max. Flow	80 l/min (see characteristic curves)
Max LS bleed flow rate	0.5 l/min*
Fluid viscosity	10 ÷ 500 mm ² /s
Fluid temperature	-25° ÷ 75° C
Ambient temperature	-25°C ÷ 60°C
Max. contamination level (filter β ₂₅ ≥ 75)	ISO 4406:1999: class 21/19/16 NAS 1638: class 10
Weight	1.9 kg

* Bleed flow rate is subtracted to the energized valve working at the higher pressure. To avoid this behavior close LS tap (see "X" on hydraulic scheme)

PRESSURE RELIEF VALVE CURVES



FEH30LS

OVERALL DIMENSIONS

