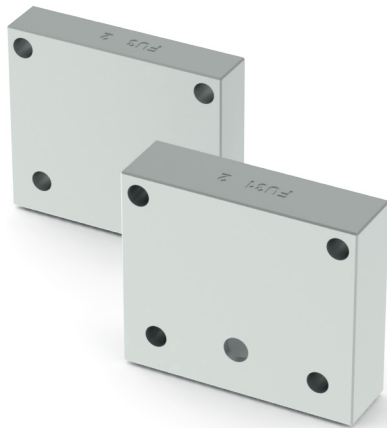


FU3

OUTLET MODULE UNITS



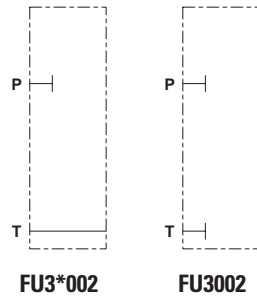
Outlet module units FU3.

- Threaded ports (T) sizes G3/8" or 9/16"-18UNF.
- Outlet modules without ports only for parallel connections
- Maximum flow 40 l/min.
- Aluminum body.

FEATURES

Max. operating pressure	250 bar
Max. Flow	40 l/min
Hydraulic fluid	DIN 51524 Mineral oils
Fluid viscosity	10 ÷ 500 mm ² /s
Fluid temperature	-25°C ÷ 75°C
Ambient temperature	-25°C ÷ 60°C
Max. contamination level (filter β ₂₅ ≥ 75)	ISO 4406:1999: class 21/19/16 NAS 1638: class 10
Weight	0.2 kg

HYDRAULIC SYMBOLS



ORDERING CODE

FU	Outlet module unit
3	Size
*	Port size: For outlet module without ports is not required (only for parallel style) 1 = G3/8" 2 = 9/16"-18UNF
00	No variant
2	Serial No.

OVERALL DIMENSIONS

