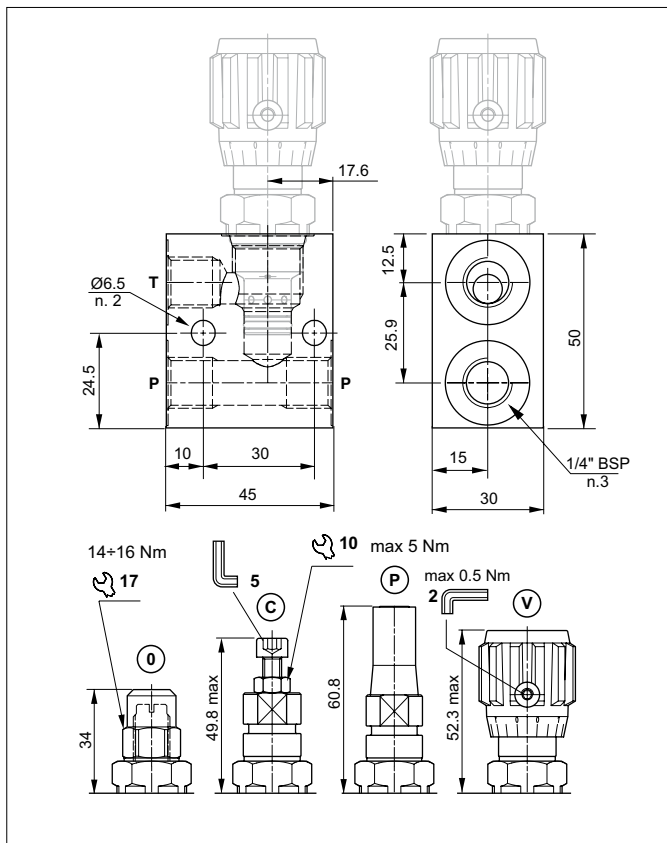


DIRECT ACTING PRESSURE RELIEF VALVES - IN-LINE MOUNTING



The direct acting relief valve with CMP04 cartridge limits the pressure in the hydraulic circuit

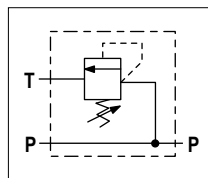
It raises the safety level by making it impossible for the plant operators to set a higher pressure rating, than that specified in the catalogue. It has a pack spring with a mechanical stop (only standard screw and nut).

It has a high-resistance aluminium body. The cartridge is in galvanised steel.

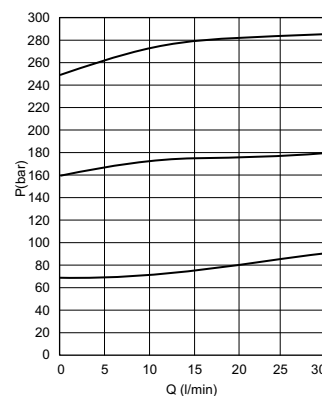
Max. working pressure	330 bar
Setting range:	
Spring B (white)	max 70 bar
Spring G (yellow)	max 160 bar
Spring V (green)	max 330 bar
Max. Flow	30 l/min
Hydraulic fluid	DIN 51524 Mineral oils
Fluid viscosity	10 ÷ 500 mm ² /s
Fluid temperature	-25°C ÷ 75°C
Ambient temperature	-25°C ÷ 60°C
Max. contamin. level class with filter	ISO 4406:1999 - class 19/17/14
Weight (0 version)	0.235 kg

The minimum permissible setting pressure depending on the spring: see curves below

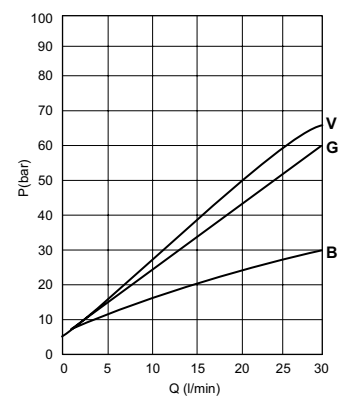
HYDRAULIC SYMBOL



PRESSURE-FLOW RATE



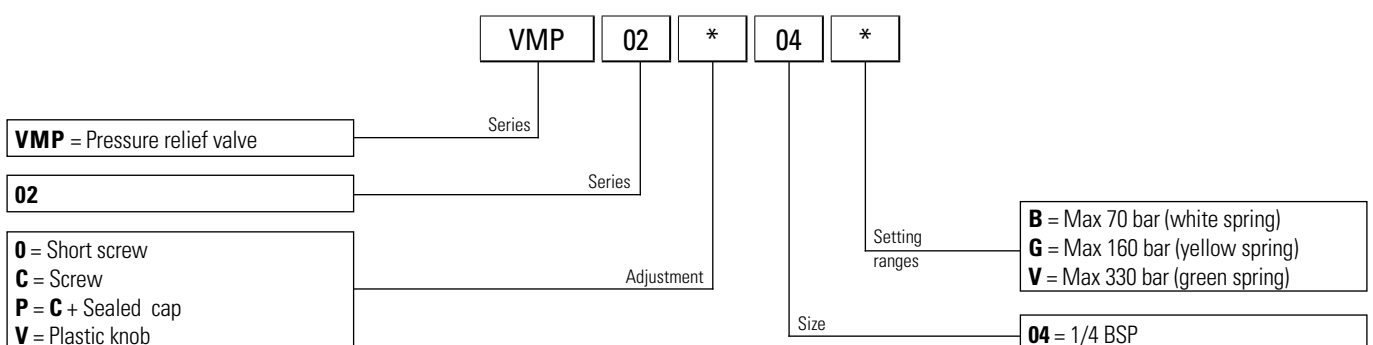
MIN.SETTING PRESSURE



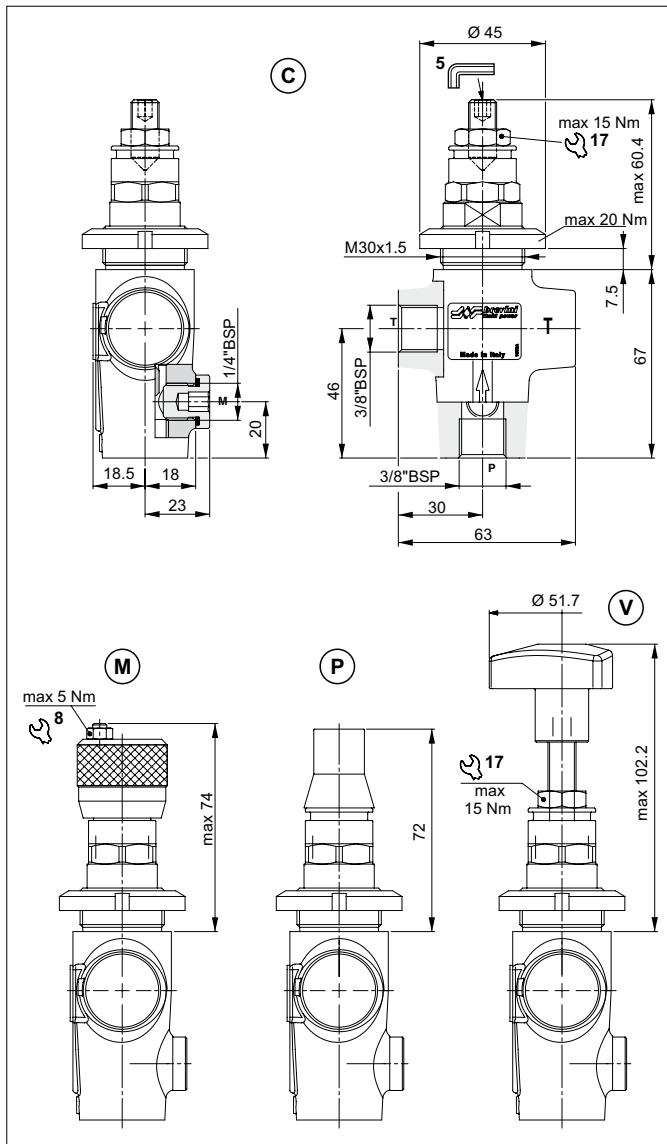
1 = VMP02*B.. - 2 = VMP02*G.. - 3 = VMP02*V..

Fluid used: mineral based oil with viscosity 32 mm²/s at 40°C.

ORDERING CODE



DIRECT ACTING PRESSURE RELIEF VALVES - IN-LINE MOUNTING



The direct acting relief valve with CP06 cartridge limits the pressure in the hydraulic circuit.

It raises the safety level by making it impossible for the plant operators to set a higher pressure rating, than that specified in the catalogue. This is limited by a pack spring with a mechanical stop.

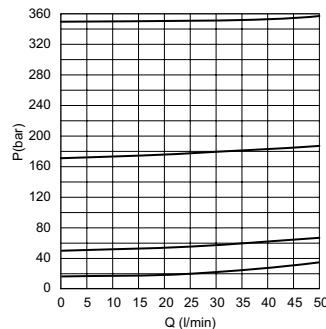
It has a manganese phosphate coated cast iron body. The cartridge is in galvanized steel.

HYDRAULIC FEATURES

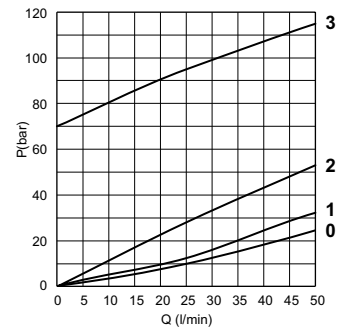
Max. working pressure	350 bar
Setting range:	
Spring 1 (orange)	max 15 bar
Spring 1 (white)	max 50 bar
Spring 2 (yellow)	max 170 bar
Spring 3 (neutral)	70 ÷ 350 bar
Max. Flow	50 l/min
Hydraulic fluid	DIN 51524 Mineral oils
Fluid viscosity	10 ÷ 500 mm ² /s
Fluid temperature	-25°C ÷ 75°C
Ambient temperature	-25°C ÷ 60°C
Max. contamin. level class with filter	ISO 4406:1999 - class 19/17/14
Weight	0.8 kg

The minimum permissible setting pressure depending on the spring: see curves below

PRESSURE-FLOW RATE

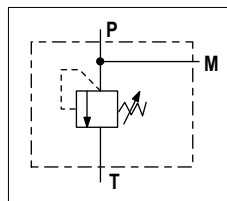


MIN. SETTING PRESSURE



0 = VMP06.0.. - 1 = VMP06.1.. - 2 = VMP06.2.. - 3 = VMP06.3..
Fluid used: mineral based oil with viscosity 46 mm²/s at 40°C.

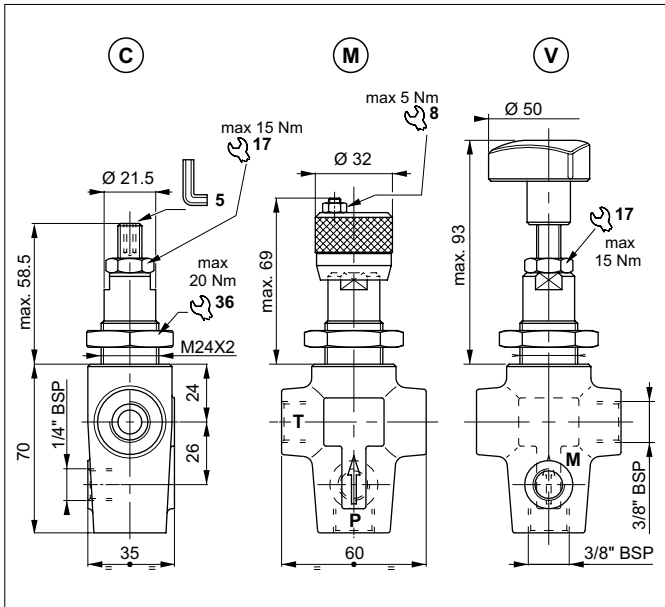
HYDRAULIC SYMBOL



ORDERING CODE

VMP	06	*	*	**	1
Series	Size	Adjustment	Setting ranges	Variants	Serial No.
VMP = Pressure relief valve	06 = Connector size: 3/8" BSP	C = Screw M = Plastic knob P = C + Sealed cap V = Handwheel	0 = Max 15 bar (orange spring) 1 = Max 50 bar (white spring) 2 = Max 170 bar (yellow spring) 3 = 70÷350 bar (neutral spring)	00 = No variants V1 = Viton	1 = Serial No.

DIRECT ACTING PRESSURE RELIEF VALVES - IN-LINE MOUNTING



The direct acting relief valve with CMP10 cartridge limits the pressure in the hydraulic circuit.

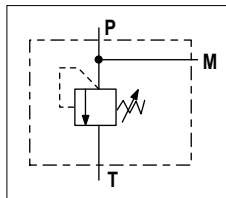
It raises the safety level by making it impossible for the plant operators to set a higher pressure rating, than that specified in the catalogue. This is limited by a pack spring with a mechanical stop, which prevents temporary P closures caused by pressure peaks.

It has a manganese phosphate coated cast iron body. The cartridge is in galvanized steel.

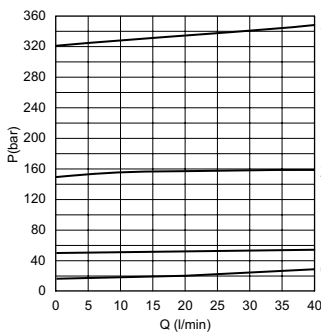
HYDRAULIC FEATURES

Max. working pressure	320 bar
Setting range:	
Spring 1 (orange)	max 15 bar
Spring 1 (white)	max 50 bar
Spring 2 (yellow)	max 150 bar
Spring 3 (green)	max 320 bar
Max. Flow	40 l/min
Hydraulic fluid	DIN 51524 Mineral oils
Fluid viscosity	10 ÷ 500 mm ² /s
Fluid temperature	-25°C ÷ 75°C
Ambient temperature	-25°C ÷ 60°C
Max. contamin. level class with filter	ISO 4406:1999 - class 19/17/14
Weight	0.8 kg

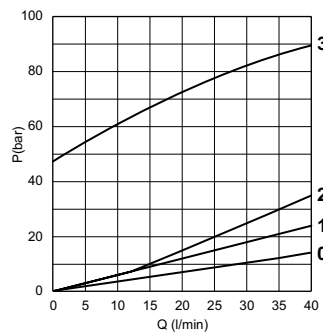
HYDRAULIC SYMBOL



PRESSURE-FLOW RATE



MIN.SETTING PRESSURE

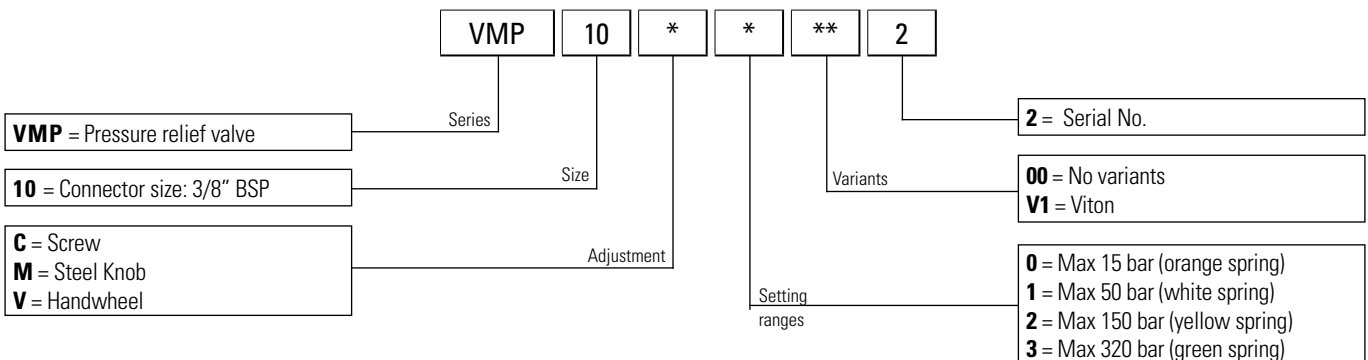


0 = VMP10.0.. - 1 = VMP10.1.. - 2 = VMP10.2.. - 3 = VMP10.3..

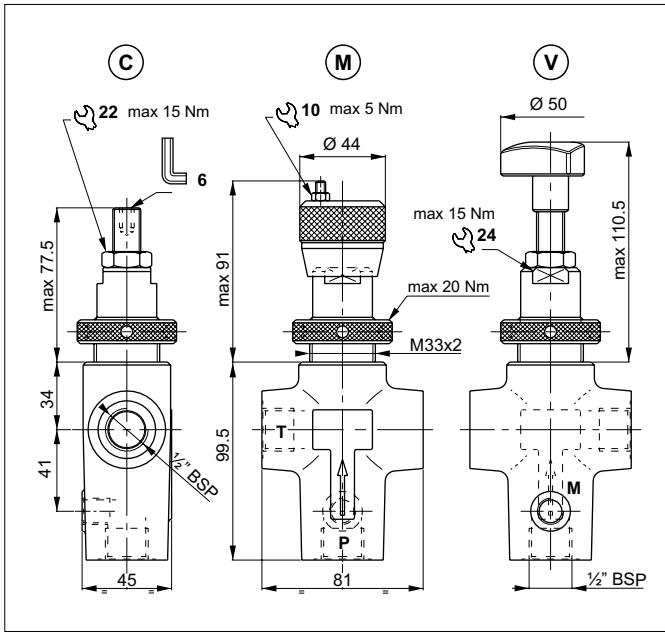
Fluid used: mineral based oil with viscosity 46 mm²/s at 40°C.

The minimum permissible setting pressure depending on the spring: see curves.

ORDERING CODE

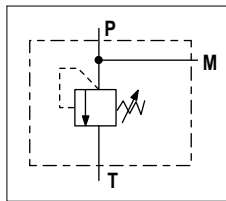


DIRECT ACTING PRESSURE RELIEF VALVES - IN-LINE MOUNTING



The direct acting relief valve with CMP20 cartridge limits the pressure in the hydraulic circuit to the calibration field specified in the catalogue. It has a manganese phosphate coated cast iron body. The cartridge is in galvanized steel.

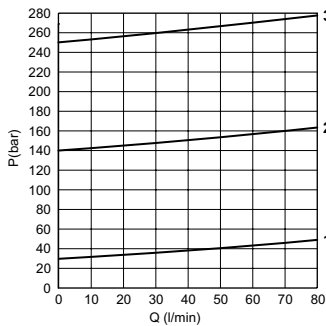
HYDRAULIC SYMBOL



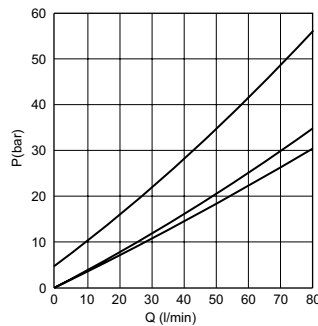
HYDRAULIC FEATURES

Max. working pressure	250 bar
Setting range:	
Spring 1 (white)	max 30 bar
Spring 2 (yellow)	max 140 bar
Spring 3 (green)	max 250 bar
Max. Flow	80 l/min
Hydraulic fluid	DIN 51524 Mineral oils
Fluid viscosity	10 ÷ 500 mm ² /s
Fluid temperature	-25°C ÷ 75°C
Ambient temperature	-25°C ÷ 60°C
Max. contamin. level class with filter	ISO 4406:1999 - class 19/17/14
Weight	1.7 kg

PRESSURE-FLOW RATE



MIN.SETTING PRESSURE

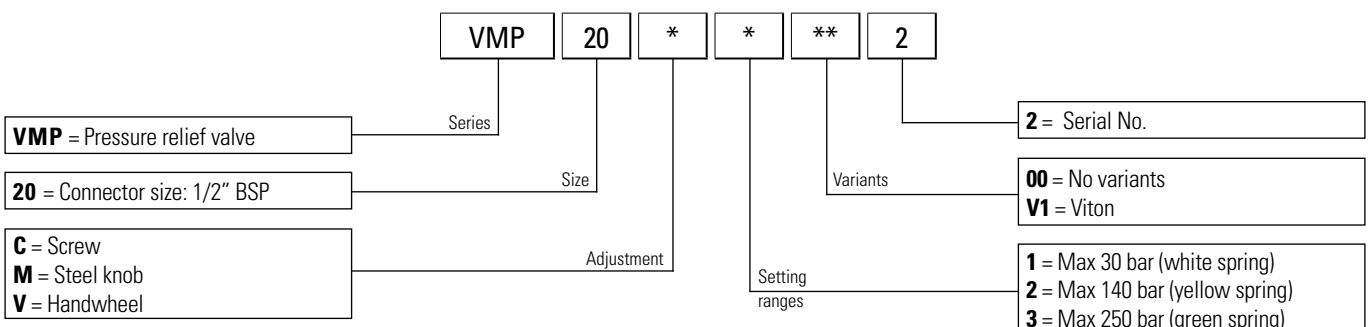


1 = VMP20.1.. - 2 = VMP20.2.. - 3 = VMP20.3..

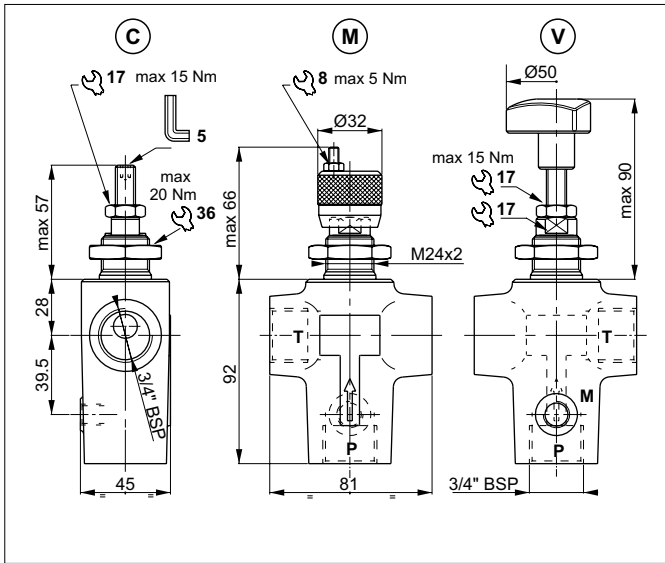
Fluid used: mineral based oil with viscosity 46 mm²/s at 40°C.

The minimum permissible setting pressure depending on the spring: see curves.

ORDERING CODE



PILOT OPERATED PRESSURE RELIEF VALVES - IN-LINE MOUNTING



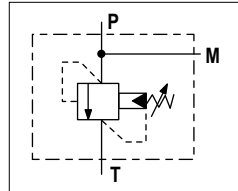
The direct acting relief valve with CMP30 cartridge limits the pressure in the hydraulic circuit.

Slight leakage is tolerated for this type of valve.

It raises the safety level by making it impossible for the plant operators to set a higher pressure rating, than that specified in the catalogue. It has a pack spring with a mechanical stop.

It has a manganese phosphate coated cast iron body. The cartridge is in galvanized steel.

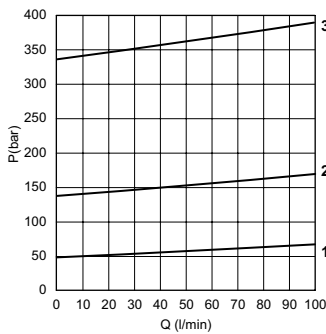
HYDRAULIC SYMBOL



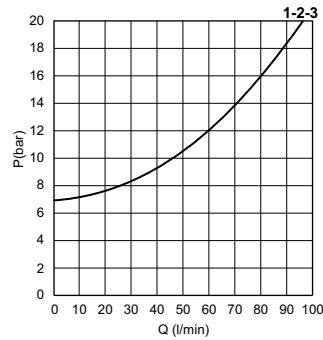
HYDRAULIC FEATURES

Max. working pressure	350 bar
Setting range:	
Spring 1 (white)	max 50 bar
Spring 2 (yellow)	max 140 bar
Spring 3 (green)	max 350 bar
Max. Flow	100 l/min
Hydraulic fluid	DIN 51524 Mineral oils
Fluid viscosity	10 ÷ 500 mm ² /s
Fluid temperature	-25°C ÷ 75°C
Ambient temperature	-25°C ÷ 60°C
Max. contamin. level class with filter	ISO 4406:1999 - class 19/17/14
Weight	1.4 kg

PRESSURE-FLOW RATE



MIN.SETTING PRESSURE

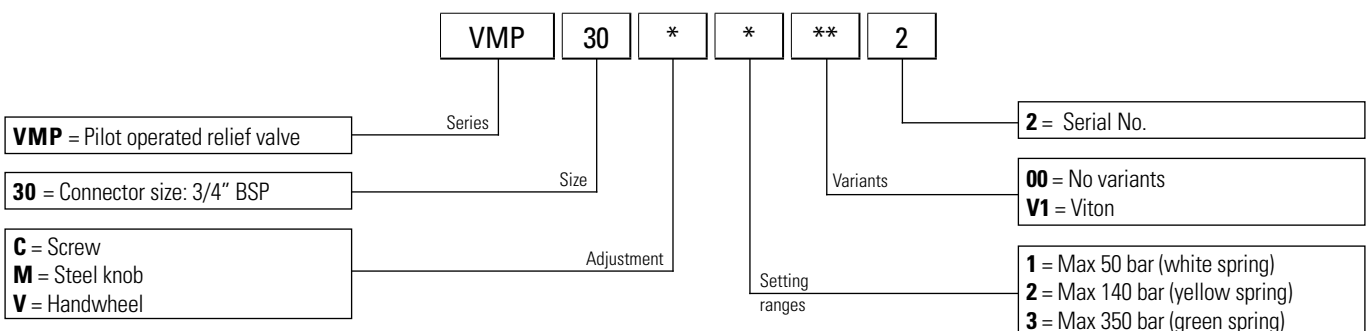


1 = VMP30.1.. - 2 = VMP30.2.. - 3 = VMP30.3..

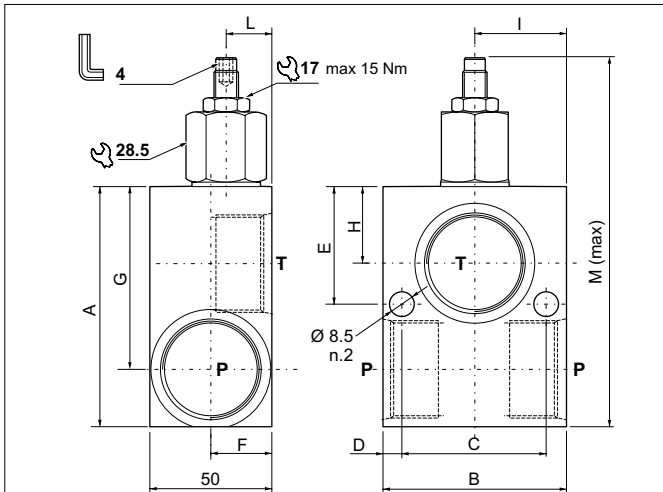
Fluid used: mineral based oil with viscosity 46 mm²/s at 40°C.

The minimum permissible setting pressure depending on the spring: see curves.

ORDERING CODE



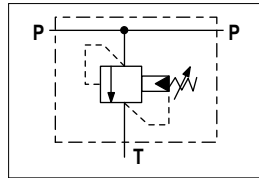
PILOT OPERATED PRESSURE RELIEF VALVES - IN-LINE MOUNTING



CODE	P - T Attacchi/Ports	A	B	C	D	E	F	G	H	I	L	M
VMP12012	3/4" BSP	92	50	38	6	12.5	31	71.5	35	25	31	145.4
VMP12016	1" BSP	100	77	60	8.5	19	25	76	32	38	17	154

The pilot-operated relief valve limits the pressure in the hydraulic circuit. Slight leakage is tolerated for this type of valve. It raises the safety level by making it impossible for the plant operators to set a higher pressure rating, than that specified in the catalogue. It has a pack spring with a mechanical stop. It has a high-resistance aluminium body. The cartridge is in galvanised steel.

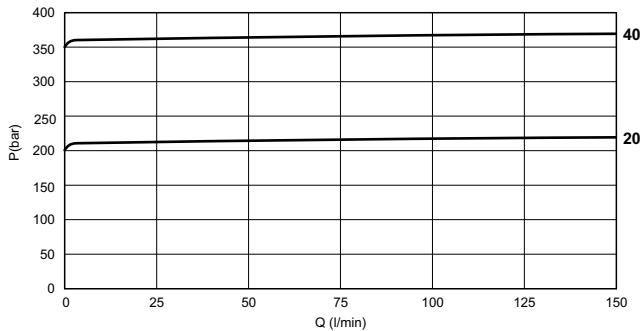
HYDRAULIC SYMBOL



HYDRAULIC FEATURES

Max. working pressure	350 bar
Max. Flow	150 l/min
Hydraulic fluid	DIN 51524 Mineral oils
Fluid viscosity	10 ÷ 500 mm ² /s
Fluid temperature	-25°C ÷ 75°C
Ambient temperature	-25°C ÷ 60°C
Max. contamin. level class with filter	ISO 4406:1999 - class 19/17/14
Weight	0.65 kg (3/4 BSP) 0.91 kg (1 BSP)
Cavity	(1" - 14 UNS) - Ø 19.05 mm

PRESSURE-FLOW RATE



Fluid used: mineral based oil with viscosity 24 mm²/s at 50°C.

ORDERING CODE

