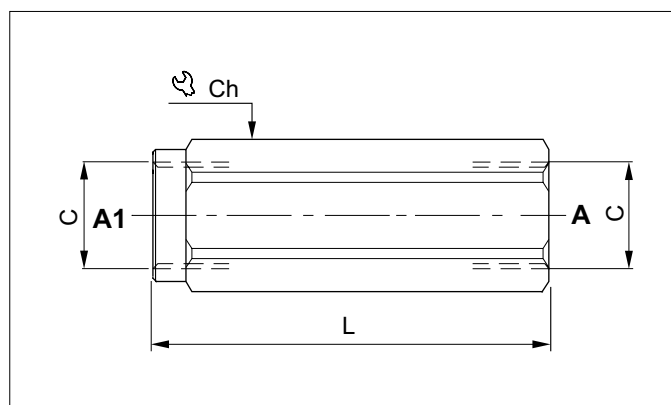


## ONE-WAY CHECK VALVES - IN-LINE MOUNTING

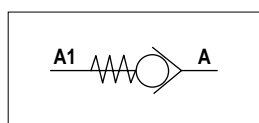


The check-valves permit one-directional oil flow only. On the opposite side the sealing is guaranteed by a hardened and ground taper steel poppet. The spring permits an easy valve installation in any position. External steel body protected on surface by a zinc plating.

### HYDRAULIC FEATURES

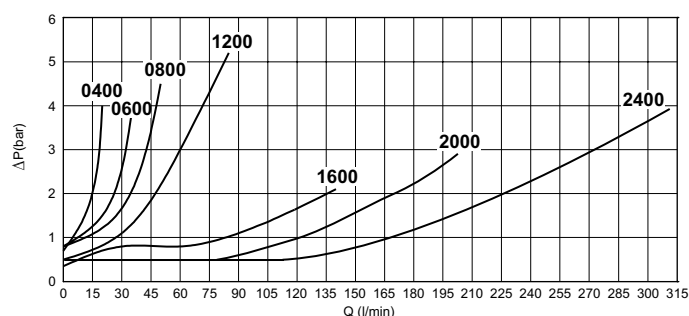
Max. Leakage (0 ÷ 5 drops/min)	0 ÷ 0.25 cm <sup>3</sup> /min
Hydraulic fluid	DIN 51524 Mineral oils
Fluid viscosity	10 ÷ 500 mm <sup>2</sup> /s
Fluid temperature	-25°C ÷ 75°C
Ambient temperature	-25°C ÷ 60°C
Max. contamin. level class with filter	ISO 4406:1999 - class 19/17/14

### HYDRAULIC SYMBOL



Code	C	Flow max (l/min)	Pressure max (bar)	L (mm)	Ch (mm)	Weight (kg)
VRU0400	1/4 BSP	20	350	59	19	0.10
VRU0600	3/8 BSP	35	350	66	24	0.17
VRU0800	1/2 BSP	50	350	78	27	0.24
VRU1200	3/4 BSP	85	300	90	36	0.49
VRU1600	1 BSP	140	250	112	40	0.67
VRU2000	1- 1/4 BSP	200	250	142	55	1.68
VRU2400	1- 1/2 BSP	310	210	155	60	2.10

### PRESSURE DROPS



Fluid used: mineral based oil with viscosity 15 mm<sup>2</sup>/s at 40°C.

### ORDERING CODE

VRU		**	**
Series	Size		
VRU = Check valve	Setting pressure		

<b>04</b> = 1/4 BSP	<b>06</b> = 3/8 BSP	<b>08</b> = 1/2 BSP	<b>12</b> = 3/4 BSP	<b>16</b> = 1 BSP	<b>20</b> = 1- 1/4 BSP	<b>24</b> = 1- 1/2 BSP
---------------------	---------------------	---------------------	---------------------	-------------------	------------------------	------------------------

CODE	04	06	08	12	16	20	24
00	0.7*	0.5*	0.5*	0.5*	0.5*	0.5*	0.5*
02				2*	2*		
03	4.5*	3*	3*	3*			
05	7.5*	5*	5*				
10	10*				10*		

Standard  
\* Pressure - bar