

CDL.04.6... STACKABLE CIRCUIT SELECTOR VALVES



CDL.04.6...

"A09" DC COILS CH. I PAGE 68

CONNECTORS STANDARD CH. I PAGE 19

The stackable circuit selector valves, type CDL.04.6, allows one single drive of 5 users with 4 elements connected in series.

As they are moved from high performances solenoids they don't need the external drainage.

Additionally, beyond having a reduced and compact dimensions, they can manage high hydraulic powers with a minimal pressure drop. The body valve is white zinc plated.

Max. pressure	250 bar
Max. flow	20 l/min
Overlap	positive
Hydraulic fluids	Mineral oils DIN 51524
Fluid viscosity	10 ÷ 500 mm ² /s
Fluid temperature	-25°C ÷ 75°C
Ambient temperature	-25°C ÷ 60°C
Max. contamination level	class 10 in accordance NAS with 1638 with filter β ₂₅ ≥ 75
Weight	see "Overall dimension"

ORDERING CODE

CDL	Stackable circuit selector valve
04	Size NG04
6	No. of way (single element)
W	Threaded connectors 1/4" BSP
I	Internal drainage
*	No. of elements: 1 / 2 / 3 / 4
*	Voltage (Tab. 1)
**	Variants (Tab. 2)
1	Serial No.

TAB.1 - A09 (27 W) COIL

DC VOLTAGE **	
L	12V
4	14V
M	24V
N	48V*
P	110V*
Z	102V* ← 115Vac/50Hz 120Vac/60Hz with rectifier
X	205V* ← 230Vac/50Hz 240Vac/60Hz with rectifier
W	Without DC coil

Voltage codes are not stamped on the plate, their are readable on the coils.

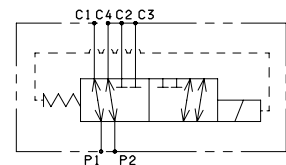
* Special voltage

** Technical data see page I • 67

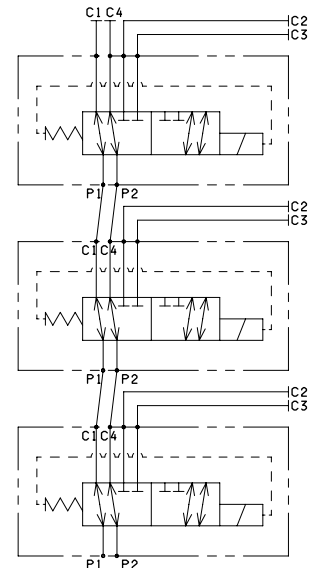
- The AMP Junior coil, the Deutsch coil with bidirectional diode and the coil with flying leads (with or without diode) coils are available in 12V or 24V DC voltage only.

HYDRAULIC SYMBOLS

SINGLE ELEMENT



MULTI STATION CONNECTION



TAB. 2 - VARIANTS

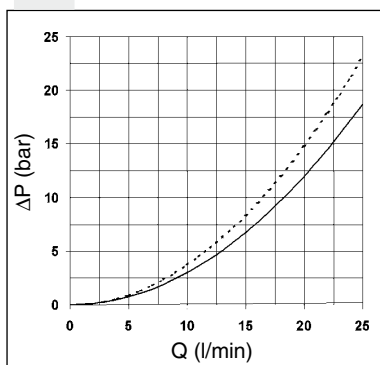
VARIANT	CODE
No variant (without connectors)	S1(*)
Viton	SV(*)
Rotary emergency button	P2(*)(**)
Emergency button	ES(*)
AMP Junior connection	AJ(*)
Bobina con fili (250 mm)	FL
with flying leads (130 mm) and integr. diode	LD
Deutsch connection with bidir. diode	CX

Other variants available on request.

(*) Coils with Hirschmann and AMP Junior connection supplied without connectors. The connectors can be ordered separately, ch. I page 19.

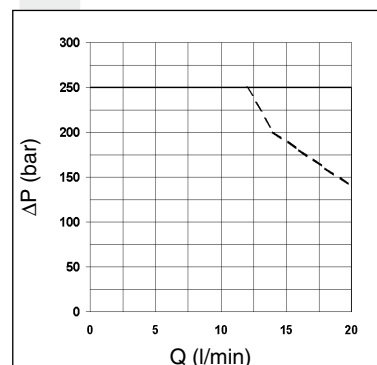
(**) P2 Emergency tightening torque **max. 6÷9 Nm / 0.6 ÷ 0.9 Kgm** with CH n. 22

PRESSURE DROPS



— P1 → C1
P1 → C2
- - - P2 → C3
P2 → C4

LIMITS OF USE

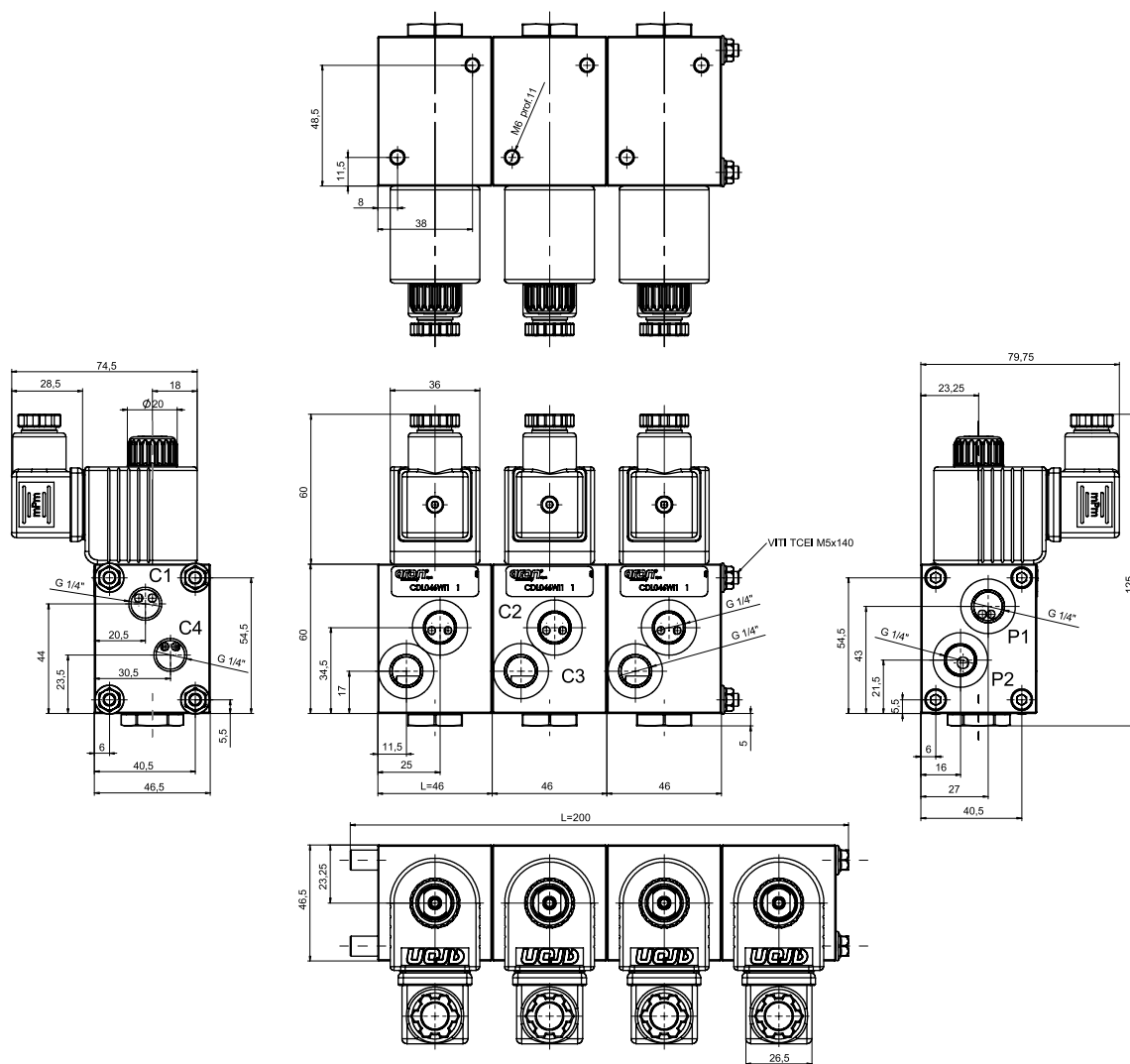


— Energizing
- - - De-energizing

The tests have been carried out with solenoids at operating temperature and a voltage 10% less than rated voltage with a fluid temperature of 50°C. The fluid used was a mineral oil with a viscosity of 46 mm²/s at 40 degrees C.

OVERALL DIMENSIONS

1



Fixing screws with material specifications min. 8.8
Tighten the screws to a torque of 5 Nm (0.5 Kgm)

No. of elements	No. of way	L (Length)	Weight (Kg)	Fixing screws	Kit spare part code* (rods and studs)
1	06	46	1.05	—	—
2	08	100	2.20	TCEI M5x95	V89.54.0020
3	10	145	3.30	TCEI M5x140	V89.54.0021
4	12	200	4.45	TCEI M5x194 (special rods)	V89.54.0022

(*) For multiple composition rods and studs are available.

Support plane specifications

