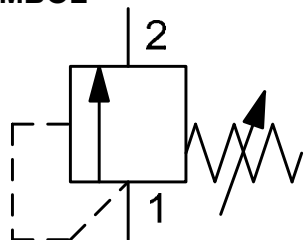
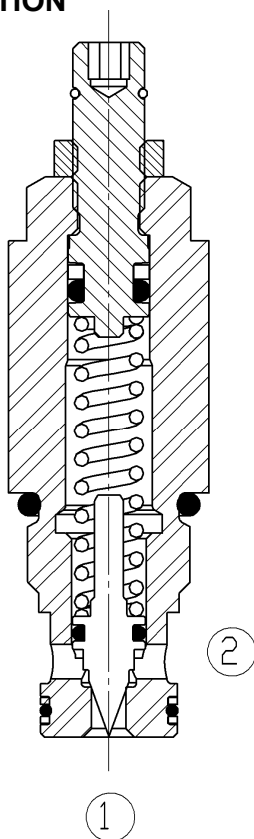


SYMBOL



up to 20 l/min
up to 350 bar

FUNCTION



The Pressure relief valve DB06C is a direct acting, spring loaded valve with damped characteristics. Its job is to limit the pressure in the system. The spring acts with a certain force on the piston and presses it on the valve seat. On the opposite side the system pressure works at port 1. If the hydraulic force is lower than the spring pressure the valve remains closed. Only if the force is higher, the valve opens and the flow will be let to port 2 (tank). If the system pressure is equal to the spring pressure the valve closes again.

Attention: Pressure at port 2 increases the opening pressure! If ports are interchanged or the pressure adjustment is higher than the operating pressure, the function of the valve is invalid.

Pressure Relief Valve

Poppet type, direct acting

Cartridge-Minivalve – 350 bar

DB06C-01

UNF

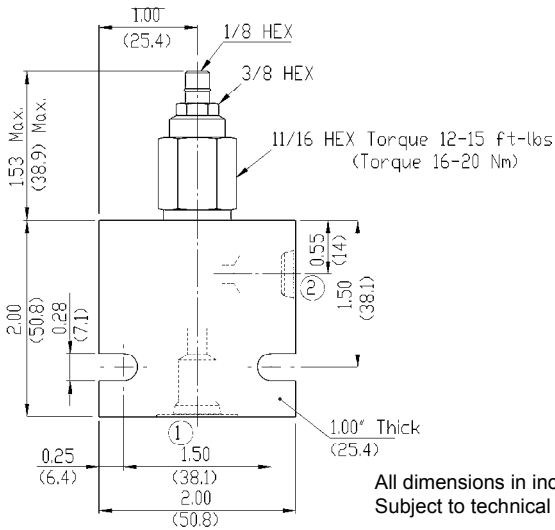
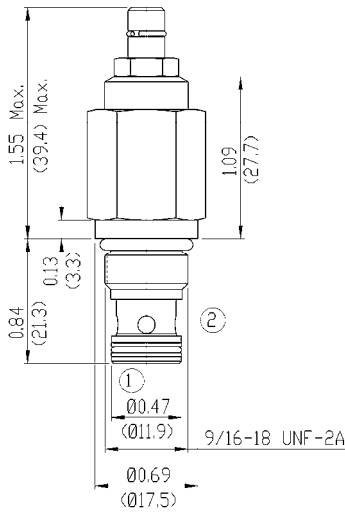
FEATURES

- All exposed surfaces corrosion-proof
- All valve parts made of high-strength steel with hardened and ground components to ensure minimal wear and extend service life
- Fast response
- Adjustable under full system pressure
- Adjustable over the u.m. pressure range
- Various pressure ranges up to 350 bar
- Poppet type valve with damped characteristics

SPECIFICATIONS

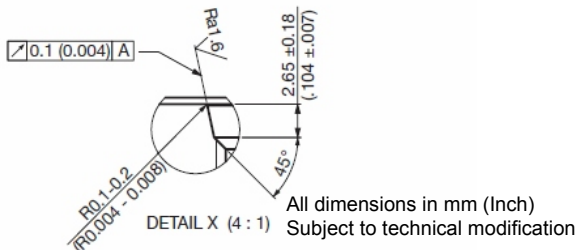
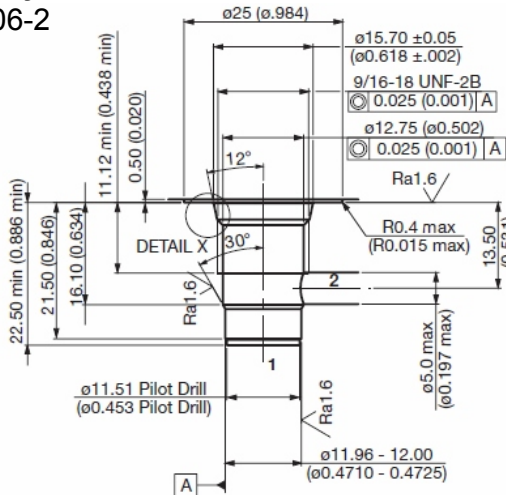
Operating pressure:	max. 350 bar
Nominal flow:	max. 20 l/min
Pressure ranges:	0 up to 125 bar
	0 up to 210 bar
	35 up to 350 bar
Leakage:	leakage-free, < max. 0,35 cm ³ /min at 75% nominal pressure
Temperature range of operating fluid:	Min. – 30°C up to max. +100° C
Ambient temperature range:	Min. – 30°C up to max. + 60° C
Fluid:	Hydraulic fluid to DIN 51524 T1 + T2
Viscosity range:	min. 7,4 mm ² /s up to max. 420 mm ² /s
Filtration:	Class 21 / 19 /16 according to ISO 4406 or cleaner
MTTF _d :	150 years
Installation:	no orientation restrictions
Materials:	Valve body: steel with hardened work surfaces
	Piston: hardened and ground steel
Seals:	NBR (Standard)
	FKM (optional, temperature range -20°C up to +120°C)
Back-up rings:	TPE-E
Cavity:	FC06-2
Weight:	0,068 kg

DIMENSIONS



All dimensions in inch (mm)
Subject to technical modification

Cavity FC06-2



All dimensions in mm (Inch)
Subject to technical modification

Tools

Code	Part No.
Twist drill	2582046
Countersink	2582047



MODEL CODE

DB06C - 01 - C - N - 400 V 300

Basic model _____
Pressure relief valve, direct acting

Type _____
01 = Standard

Body & ports _____
C = cartridge only
*versions in line bodies on request

Seals _____
N = NBR (Standard)
V = FKM (optional)

Pressure range _____
180 = 0 up to 125 bar (1800PSI)
300 = 0 up to 210 bar (3000PSI)
500 = 35 up to 350 bar (5000PSI)

Adjustment option _____
V = adjustable by tool

Setting _____
omission = 50% of max. Pressure
300 = factory preset pressure in PSI (/10)
Other pressures on request

Standard models

Name	Part No.
DB06C-01-C-N-180V	2610322
DB06C-01-C-N-300V	2610324
DB06C-01-C-N-500V	2610342

Other types on request

*Line bodies

Code	Part No.	Material	Ports	Pressure
FH062-SB2	3740528	steel, zinc plated	G1/4	420 bar
FH062-AB2	3741297	Alu, anodized	G1/4	245 bar

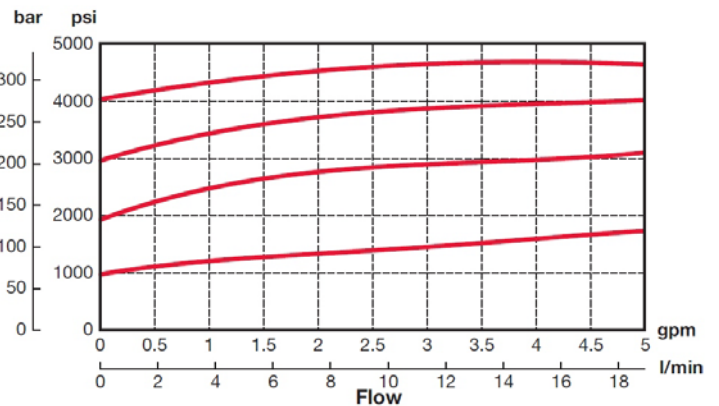
other line bodies on request

Seal kits

Code	Part No.
Seal kit-NBR	2610184
Seal kit-FKM	2610185

PERFORMANCE

Measured at 28 mm²/s and T oil = 38°C



Annotation

The technical information in this brochure are relating to the operating conditions and applications. At deviant applications and/or operating conditions please contact the technical dept. Technical information are subject to technical modifications.

HYDAC Fluidtechnik GmbH
Justus-von-Liebig-Str. 5
66280 Sulzbach / Saar
Tel.: 06897 / 509 -0
Fax: 06897 / 509 -598
Email: flutec@hydac.com