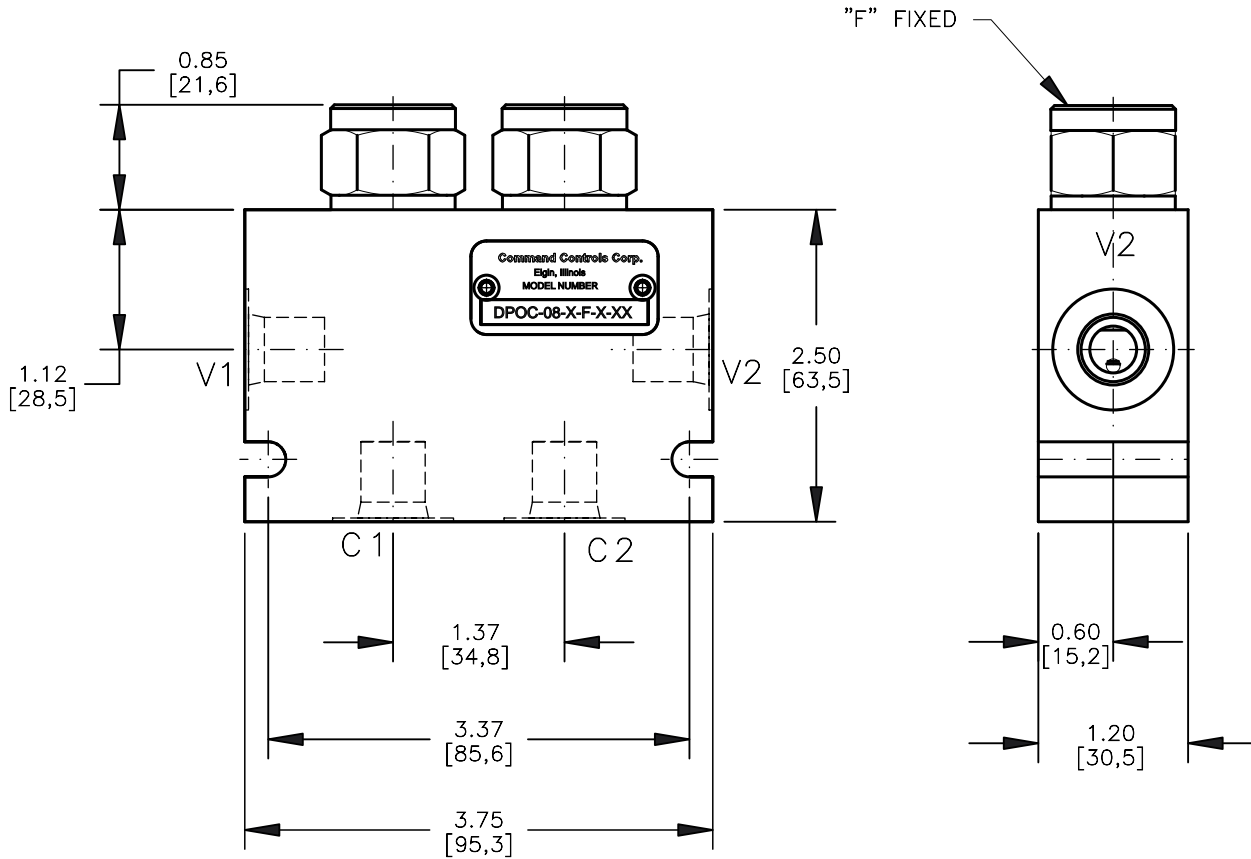
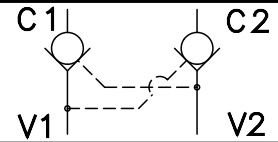


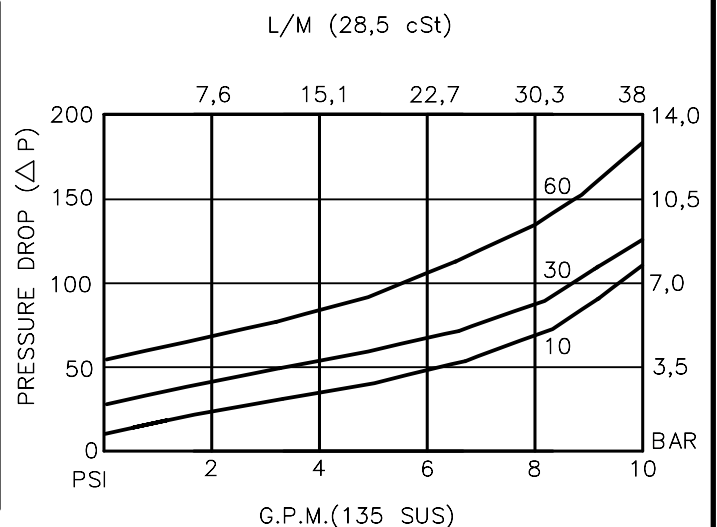
DUAL PILOT OPERATED CHECK VALVE POPPET  
TYPE, PILOT TO OPEN, 3 TO 1 PILOT RATIO.



FOR ALUMINUM OR STEEL VALVE HOUSING CONFIGURATIONS SEE PAGE 0-026.0

**DPOC-08-X-X-X-XXX**

- BASIC
- SIZE  
08 = 3/4"-16 UNF
- SEALS  
N = BUNA "N"  
V = VITON
- ADJUSTMENT  
F = FIXED
- CRACK PRESSURE  
010 = 10 PSI  
030 = 30 PSI  
060 = 60 PSI
- PORTS  
03BX = G 3/8" BSPP  
04BX = G 1/2" BSPP  
08TX = SAE - #8
- "A" - ALUM. HOUSING  
"S" - STEEL HOUSING



## DUAL PILOT OPERATED CHECK VALVE POPPET TYPE, PILOT TO OPEN, 3 TO 1 PILOT RATIO.

### DESCRIPTION

This unit is a cartridge type, guided poppet, with cross line pilot, dual hydraulic pilot operated check valve, for use as a blocking or load holding device for high pressure applications.

### OPERATIONS

This valve allows free flow from port V1 to port C1 and V2 to C2 then blocks reverse flow until a pilot pressure is sensed at pilot ports which are connected to ports V1 and V2 therefore opening flow from port C1 or port C2.

This pilot operated check valve has a 3 to 1 pilot ratio, meaning that it takes at least one-third of the load pressure held at port 1 that is required at port 3 to open the valve.

### FEATURES AND BENEFITS

A low friction seal on pilot piston is standard.

A separate heavy spring assures fast return of the pilot piston for a very quick, reliable and positive valve re-seat.

All external carbon steel parts are plated for longer life against the elements. All cartridge valves are 100% functionally tested. Industry common cavity.

### SPECIFICATIONS

OPERATING PRESSURE: 5,000 PSI [350 Bar]

PROOF PRESSURE: 10,000 PSI [700 Bar]

FLOW: 10.0 GPM [38 l/m] nominal. See performance chart.

PILOT RATIO: 3 TO 1

INTERNAL LEAKAGE: 5 drops per minute maximum @ 5,000 PSI [350 Bar]

VALVE HOUSINGS: 2500 PSI [175 Bar] = Aluminum – Anodized.

5000 PSI [350 Bar] = Steel – Unplated.

OPERATING TEMPERATURE: -40° to +250° F. [-40° to +120° C.]

OPERATING MEDIA: All general purpose hydraulic fluids such as MIL-H-5606, SAE-#10, SAE-#20, etc.

INSTALLATION: No restrictions.

SEAL KIT: SKN-0828 Buna "N"

SKV-0828 Viton

WEIGHT: 1.70 lb [.77 kg].

VALVE CAVITIES: #C0825, See Page 0-021.0.

info.el@bucherhydraulics.com

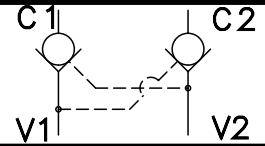
www.bucherhydraulics.com/commoncavity

© 2015 by Bucher Hydraulics, Inc., 2545 Northwest Parkway, Elgin, Illinois 60124, USA

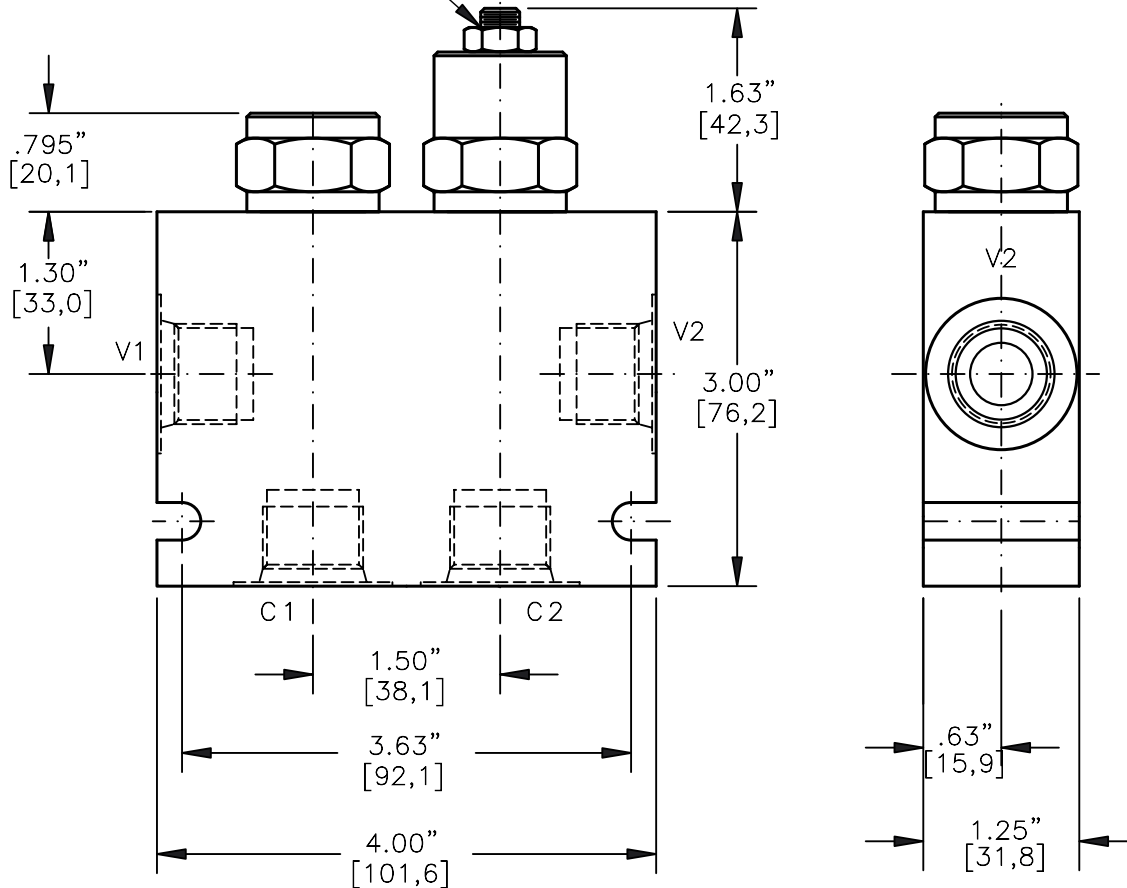
All rights reserved.

Data is provided for the purpose of product description only, and must not be construed as warranted characteristics in the legal sense. The information does not relieve users from the duty of conducting their own evaluations and tests. Because the products are subject to continual improvement, we reserve the right to amend the product specifications contained in this catalogue.

DUAL PILOT OPERATED CHECK VALVE POPPET  
TYPE, PILOT TO OPEN, 3 TO 1 PILOT RATIO.



"M" MANUAL LOAD RELEASE



DPOC-10-X-X-X-XXX

BASIC

SIZE

10 = 7/8"-14 UNF

SEALS

N = BUNA "N"

V = VITON

ADJUSTMENT

F = FIXED

M = MANUAL RELEASE

CRACK PRESSURE

010 = 10 PSI

030 = 30 PSI

060 = 60 PSI

PORTS

03BX = G 3/8" BSPP

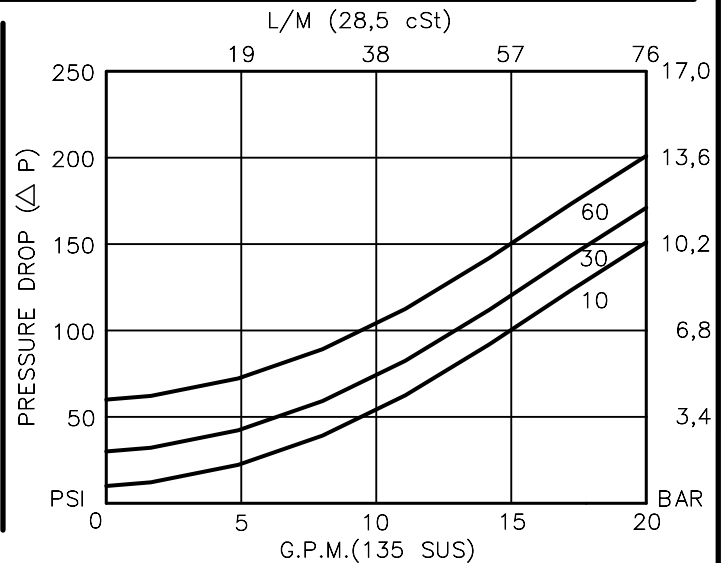
04BX = G 1/2" BSPP

08TX = SAE - #8

10TX = SAE - #10

"A" - ALUM. HOUSING

"S" - STEEL HOUSING



## DUAL PILOT OPERATED CHECK VALVE

### POPPET TYPE, PILOT TO OPEN, 3 TO 1 PILOT RATIO.

#### DESCRIPTION

This unit is a cartridge type, guided poppet, with cross line pilot, dual hydraulic pilot operated check valve, for use as a blocking or load holding device for high pressure applications.

#### OPERATIONS

This valve allows free flow from port V1 to port C1 and V2 to C2 then blocks reverse flow until a pilot pressure is sensed at pilot ports which are connected to ports V1 and V2 therefore opening flow from port C1 or port C2.

This pilot operated check valve has a 3 to 1 pilot ratio, meaning that it takes at least one-third of the load pressure held at port 1 that is required at port 3 to open the valve.

#### FEATURES AND BENEFITS

A low friction seal on pilot piston is standard.  
 A separate heavy spring assures fast return of the pilot piston for a very quick, reliable and positive valve re-seat.  
 Optional screw type manual load release is available.  
 All external carbon steel parts are plated for longer life against the elements.  
 All cartridge valves are 100% functionally tested.  
 Industry common cavity.

#### SPECIFICATIONS

OPERATING PRESSURE: 5,000 PSI [350 Bar]

PROOF PRESSURE: 10,000 PSI [700 Bar]

FLOW: 18.0 GPM [70 l/m] nominal. See performance chart.

PILOT RATIO: 3 TO 1

INTERNAL LEAKAGE: 5 drops per minute maximum @ 5,000 PSI [350 Bar]

VALVE HOUSINGS: 2500 PSI [175 Bar] = Aluminum – Anodized.

5000 PSI [350 Bar] = Steel – Unplated.

OPERATING TEMPERATURE: -40° to +250° F. [-40° to +120° C.]

OPERATING MEDIA: All general purpose hydraulic fluids such as MIL-H-5606, SAE-#10, SAE-#20, etc.

INSTALLATION: No restrictions.

SEAL KIT: SKN-1028 Buna "N"

SKV-1028 Viton

WEIGHT: 1.85 lb [.92 kg].

VALVE CAVITIES: #C1025, See Page 0-022.0.

info.el@bucherhydraulics.com

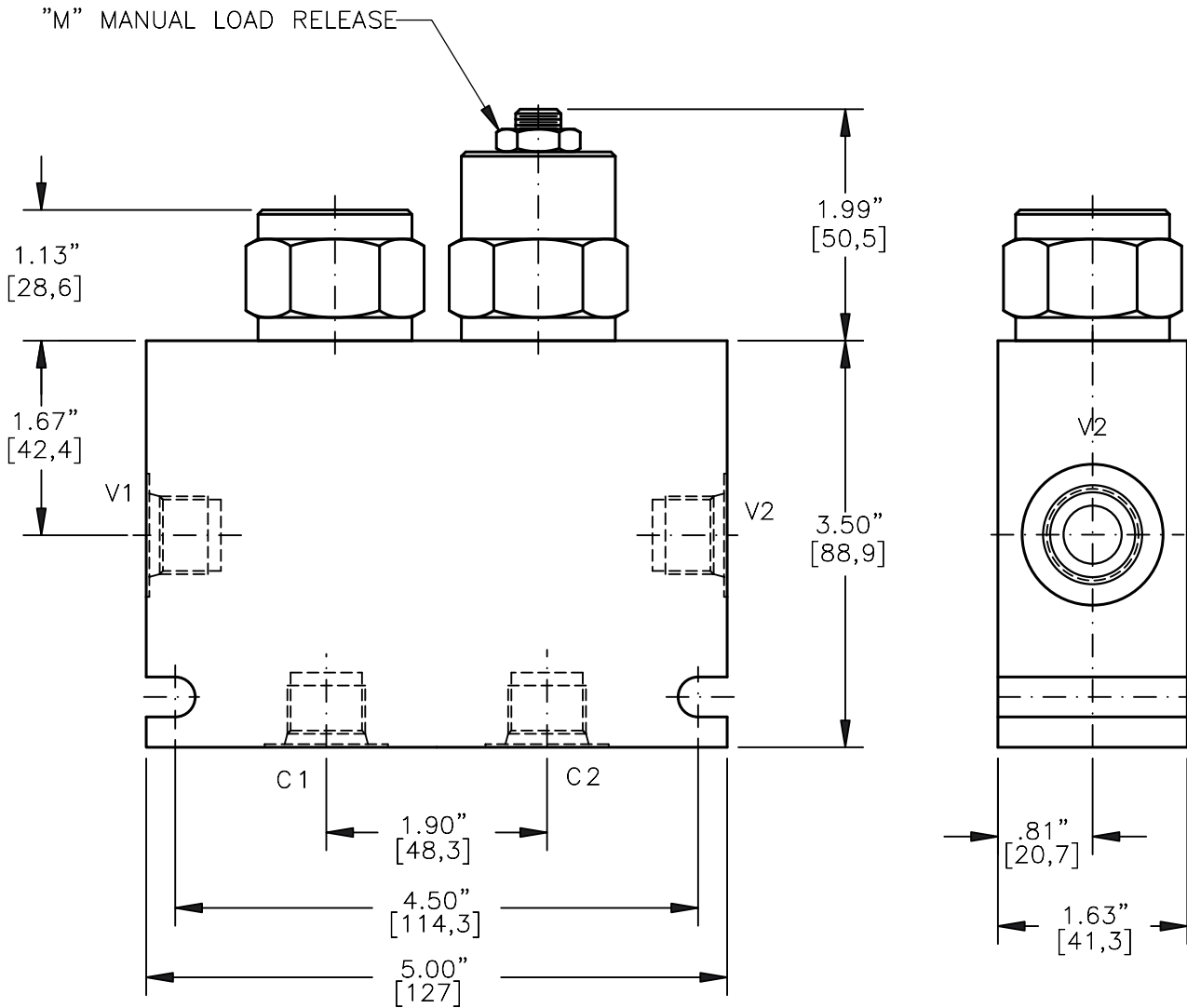
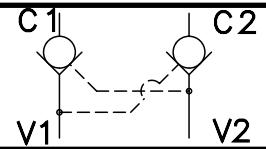
www.bucherhydraulics.com/commoncavity

© 2015 by Bucher Hydraulics, Inc., 2545 Northwest Parkway, Elgin, Illinois 60124, USA

All rights reserved.

Data is provided for the purpose of product description only, and must not be construed as warranted characteristics in the legal sense. The information does not relieve users from the duty of conducting their own evaluations and tests. Because the products are subject to continual improvement, we reserve the right to amend the product specifications contained in this catalogue.

DUAL PILOT OPERATED CHECK VALVE POPPET  
TYPE, PILOT TO OPEN, 3 TO 1 PILOT RATIO.



**DPOC-12-X-X-X-XXX**

BASIC

SIZE

12 = 1.062"-12 UNF

SEALS

N = BUNA "N"

V = VITON

ADJUSTMENT

F = FIXED

M = MANUAL RELEASE

CRACK PRESSURE

010 = 10 PSI

030 = 30 PSI

060 = 60 PSI

PORTS

04BX = G 1/2" BSPP

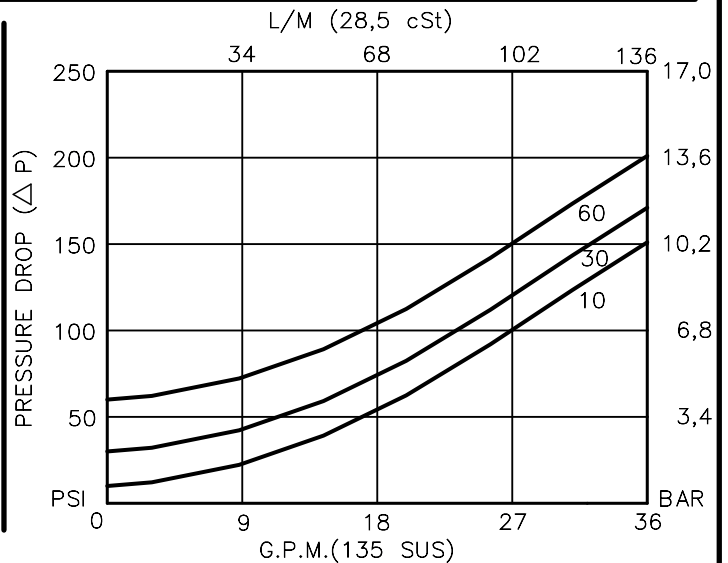
06BX = G 3/4" BSPP

10TX = SAE - #10

12TX = SAE - #12

"A" - ALUM. HOUSING

"S" - STEEL HOUSING



## DUAL PILOT OPERATED CHECK VALVE

### POPPET TYPE, PILOT TO OPEN, 3 TO 1 PILOT RATIO.

#### DESCRIPTION

This unit is a cartridge type, guided poppet, with cross line pilot, dual hydraulic pilot operated check valve, for use as a blocking or load holding device for high pressure applications.

#### OPERATIONS

This valve allows free flow from port V1 to port C1 and V2 to C2 then blocks reverse flow until a pilot pressure is sensed at pilot ports which are connected to ports V1 and V2 therefore opening flow from port C1 or port C2.

This pilot operated check valve has a 3 to 1 pilot ratio, meaning that it takes at least one-third of the load pressure held at port 1 that is required at port 3 to open the valve.

#### FEATURES AND BENEFITS

A low friction seal on pilot piston is standard.  
 A separate heavy spring assures fast return of the pilot piston for a very quick, reliable and positive valve re-seat.  
 Optional screw type manual load release is available.  
 All external carbon steel parts are plated for longer life against the elements.  
 All cartridge valves are 100% functionally tested.

#### SPECIFICATIONS

OPERATING PRESSURE: 5,000 PSI [350 Bar]

PROOF PRESSURE: 10,000 PSI [700 Bar]

FLOW: 36.0 GPM [136.3 l/m] nominal. See performance chart.

PILOT RATIO: 3 TO 1

INTERNAL LEAKAGE: 5 drops per minute maximum @ 5,000 PSI [350 Bar]

VALVE HOUSINGS: 2500 PSI [175 Bar] = Aluminum – Anodized.

5000 PSI [350 Bar] = Steel – Unplated.

OPERATING TEMPERATURE: -40° to +250° F. [-40° to +120° C.]

OPERATING MEDIA: All general purpose hydraulic fluids such as MIL-H-5606, SAE-#10, SAE-#20, etc.

INSTALLATION: No restrictions.

FILTRATION: 25 microns or better.

SEAL KIT: SKN-1228 Buna "N"

SKV-1228 Viton

WEIGHT: 2.65 lb [1.21 kg] Aluminium. 5.25 lbs [2.38] Steel.

VALVE CAVITIES: #C1225

info.el@bucherhydraulics.com

www.bucherhydraulics.com/commoncavity

© 2015 by Bucher Hydraulics, Inc., 2545 Northwest Parkway, Elgin, Illinois 60124, USA

All rights reserved.

Data is provided for the purpose of product description only, and must not be construed as warranted characteristics in the legal sense. The information does not relieve users from the duty of conducting their own evaluations and tests. Because the products are subject to continual improvement, we reserve the right to amend the product specifications contained in this catalogue.