

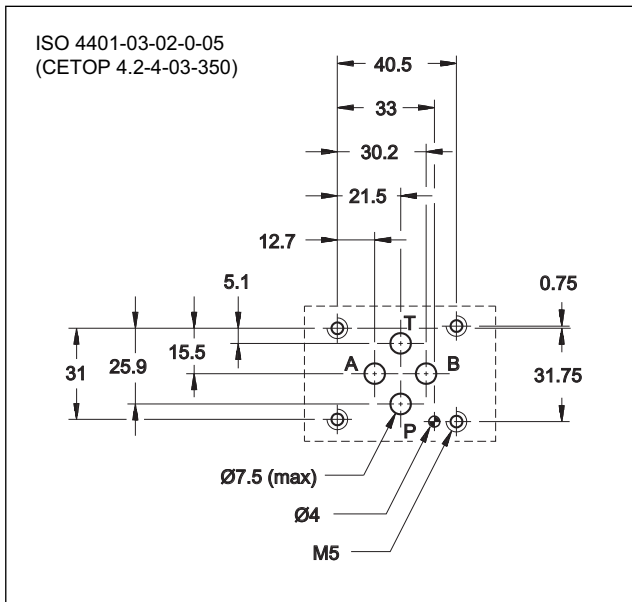
DSE3B

DIRECTIONAL VALVE WITH PROPORTIONAL CONTROL SERIES 10

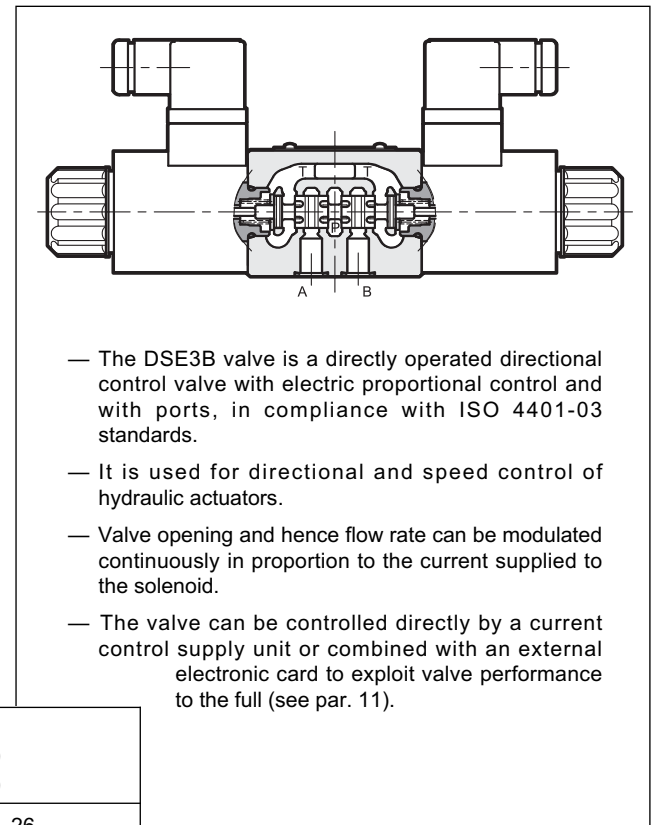
SUBPLATE MOUNTING ISO 4401-03

p max 350 bar
Q max 40 l/min

MOUNTING INTERFACE



OPERATING PRINCIPLE

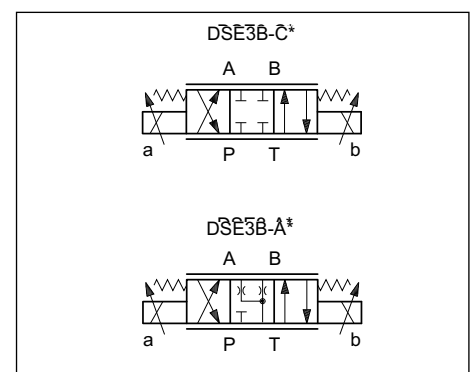


PERFORMANCES

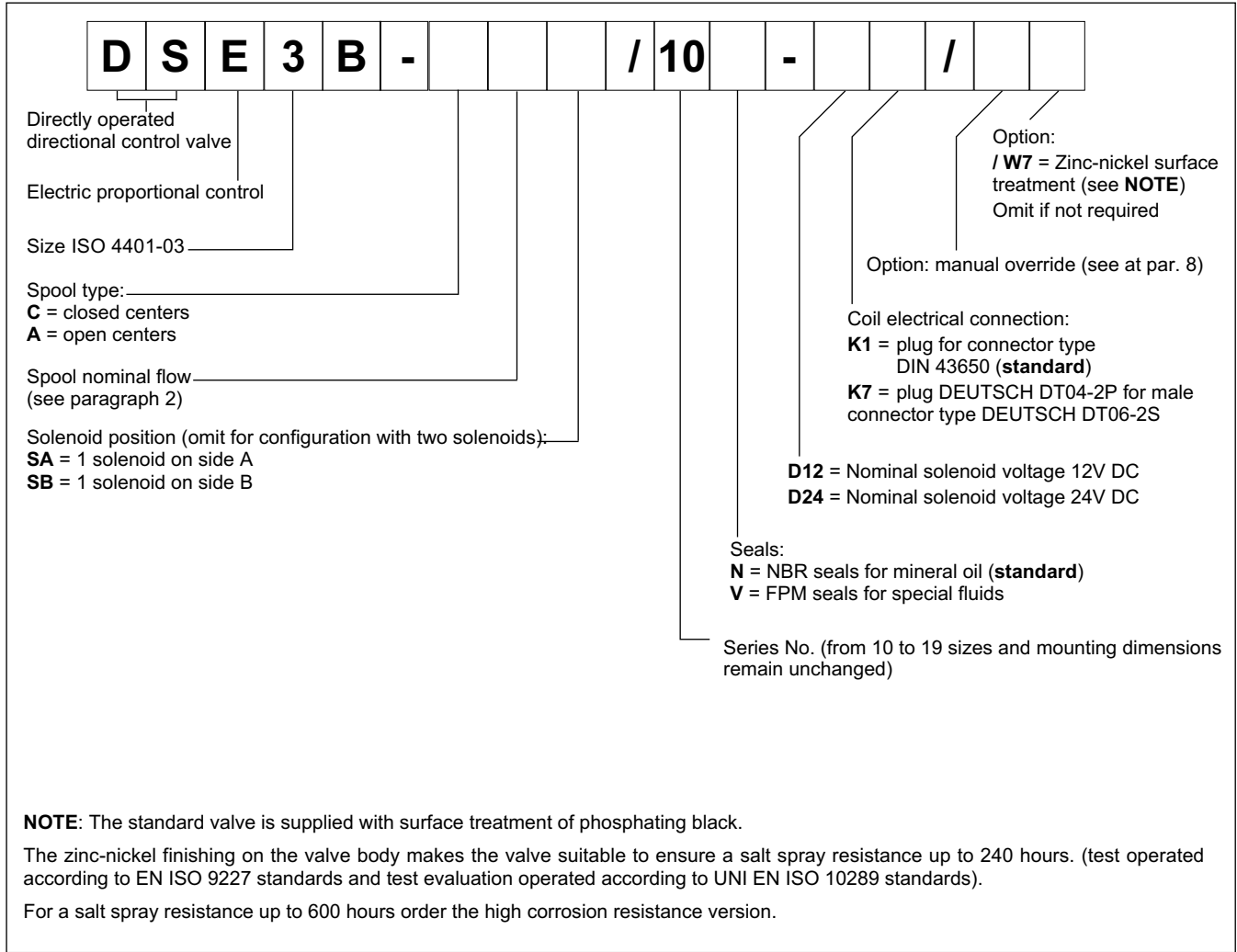
(obtained with mineral oil with viscosity of 36 cSt at 50°C and with electronic control unit)

Max operating pressure: P - A - B ports	bar	350
T port		160
Nominal flow with Δp 10 bar P-T	l/min	8 - 16 - 26
Step response		see chapter 5
Hysteresis (with PWM 200 Hz)	% Q _{max}	< 6%
Repeatability	% Q _{max}	< ± 2%
Electrical characteristics		see chapter 4
Ambient temperature range	°C	-20 / +50
Fluid temperature range	°C	-20 / +80
Fluid viscosity range	cSt	10 ÷ 400
Fluid contamination degree	According to ISO 4406:1999 class 18/16/13	
Recommended viscosity	cSt	25
Mass: single solenoid valve	kg	1,6
double solenoid valve		2,0

HYDRAULIC SYMBOLS (typical)



1 - IDENTIFICATION CODE



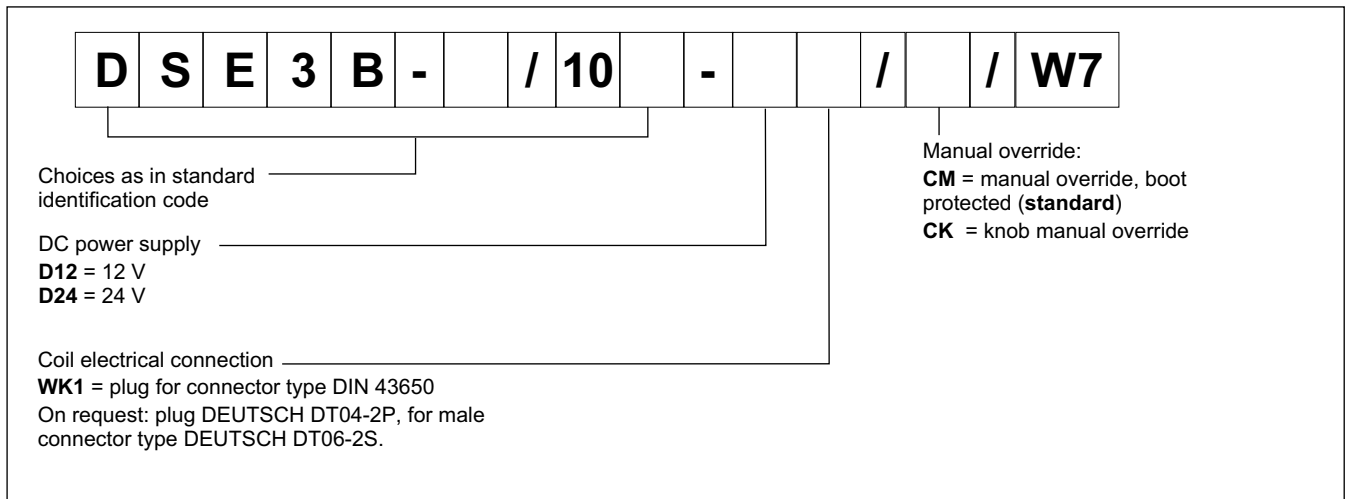
1.1 - High corrosion resistance version

This version features the zinc-nickel coating on all exposed metal parts of the valve, making it resistant to exposure to the salt spray for **600 hours** (test performed according to UNI EN ISO 9227 and assessment test performed according to UNI EN ISO 10289).

The coil are specific for this version, featuring a zinc-nickel surface treatment. Electrical features at paragraph 4.

The boot manual override (CM) is installed as standard in order to protect the solenoid tube.

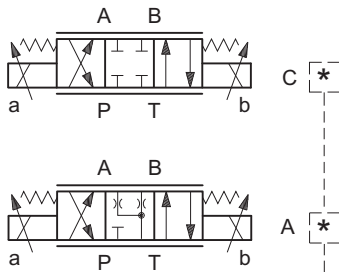
Follow the identification code below to order it:



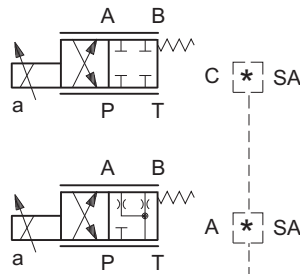
2 - CONFIGURATIONS

Valve configuration depends on the combination of the following elements:
 number of proportional solenoids, spool type, nominal flow rate.

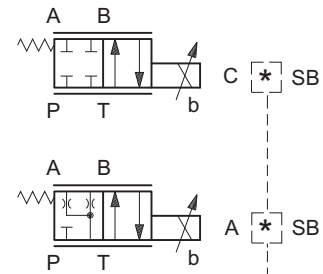
2 solenoids configuration:
 3 positions with spring centering



“SA” configuration: 1 solenoid on side A.
 2 positions (central + external) with spring centering



“SB” configuration: 1 solenoid on side B.
 2 positions (central + external) with spring centering



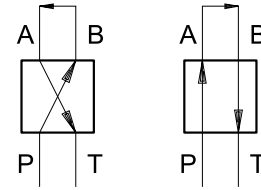
*	Controlled flow with Δp_{10} bar P-T
08	8 l/min
16	16 l/min
26	26 l/min

3 - CHARACTERISTIC CURVES

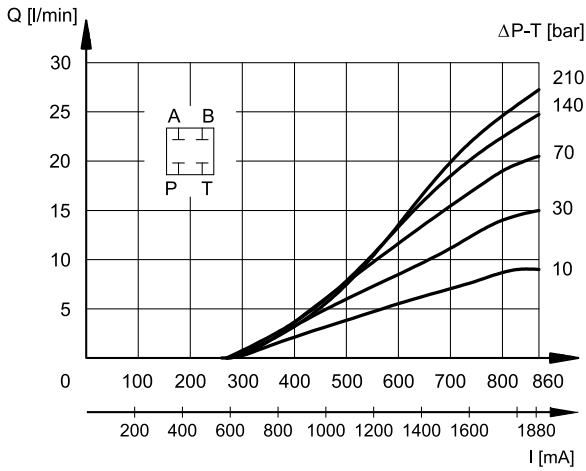
(values measured with viscosity of 36 cSt at 50°C with electronic control unit)

Typical constant flow rate control curves at Δp according to current supply to solenoid (D24 version, maximum current 860 mA), measured for the various spool types available.

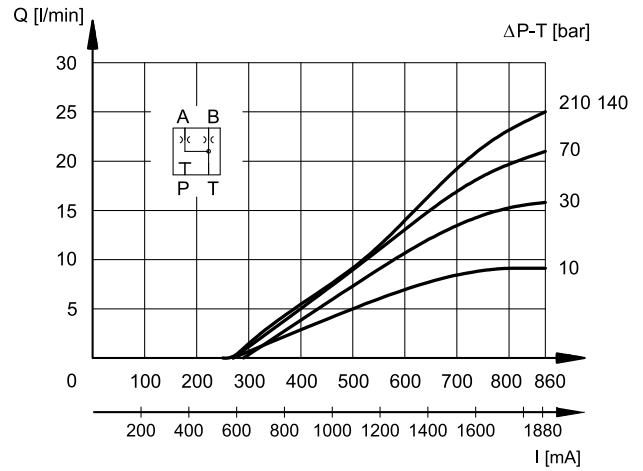
The reference Δp values are measured between ports P and T on the valve.



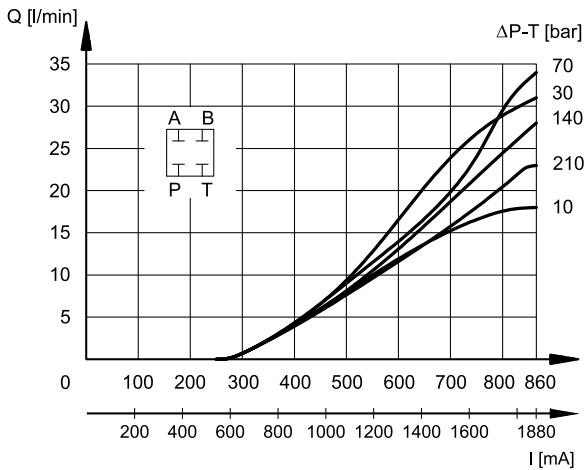
SPOOL TYPE C08



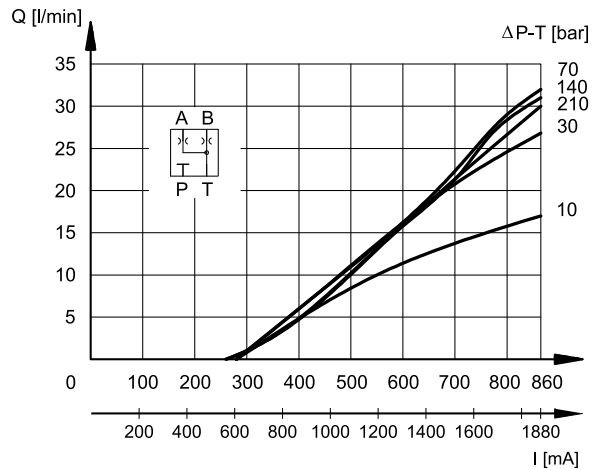
SPOOL TYPE A08



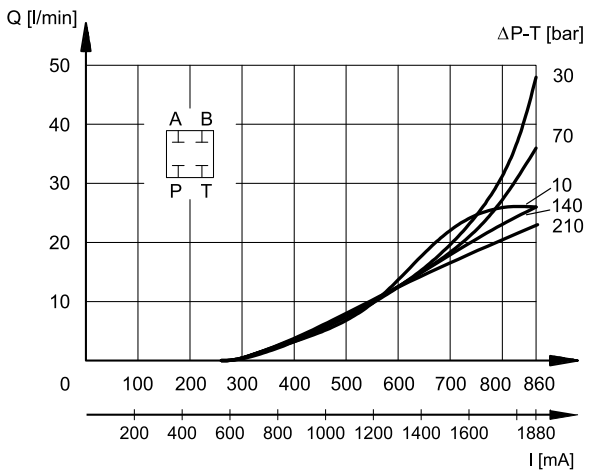
SPOOL TYPE C16



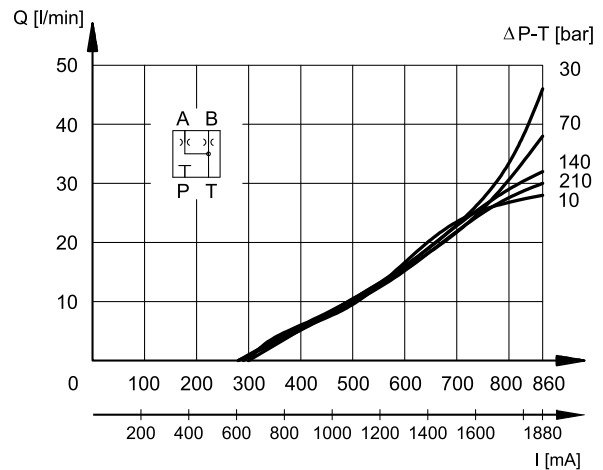
SPOOL TYPE A16



SPOOL TYPE C26



SPOOL TYPE A26



4 - ELECTRICAL CHARACTERISTICS

Proportional solenoid

The proportional solenoid comprises two parts: tube and coil.

The tube, screwed to the valve body, contains the armature which is designed to maintain friction to a minimum thereby reducing hysteresis.

The coil is mounted on the tube secured by means of a lock nut.

It can be rotated through 360° depending on installation clearances.

Protection from atmospheric agents CEI EN 60529

Plug-in type	IP 65	IP 69 K
K1 DIN 43650	x (*)	
K7 DEUTSCH DT04 male	x	x (*)

(*) The protection degree is guaranteed only with the connector correctly connected and installed.

NOMINAL VOLTAGE	V DC	12	24
RESISTANCE (at 20°C)	Ω	4,4	18,6
MAXIMUM CURRENT	A	1,88	0,86
DUTY CYCLE	100%		
ELECTROMAGNETIC COMPATIBILITY (EMC)	according to 2004/108/EC		
CLASS OF PROTECTION: coil insulation (VDE 0580) impregnation	class H class F		

5 - STEP RESPONSE

(measured with mineral oil with viscosity of 36 cSt at 50°C with electronic control units)

Step response is the time taken for the valve to reach 90% of the settled positioning value, following a step change of reference signal.

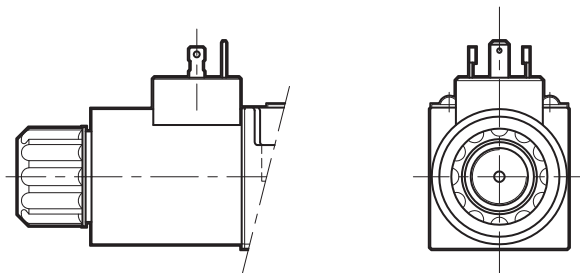
The table shows typical response times tested with spool type C16 and $\Delta p = 30$ bar P-T.

REFERENCE SIGNAL STEP	0 → 100%	100 → 0%
Step response [ms]		
DSE3B-A* DSE3B-C*	50	40

6 - ELECTRIC CONNECTIONS

Connectors for K1 connection are always delivered together with the valves.

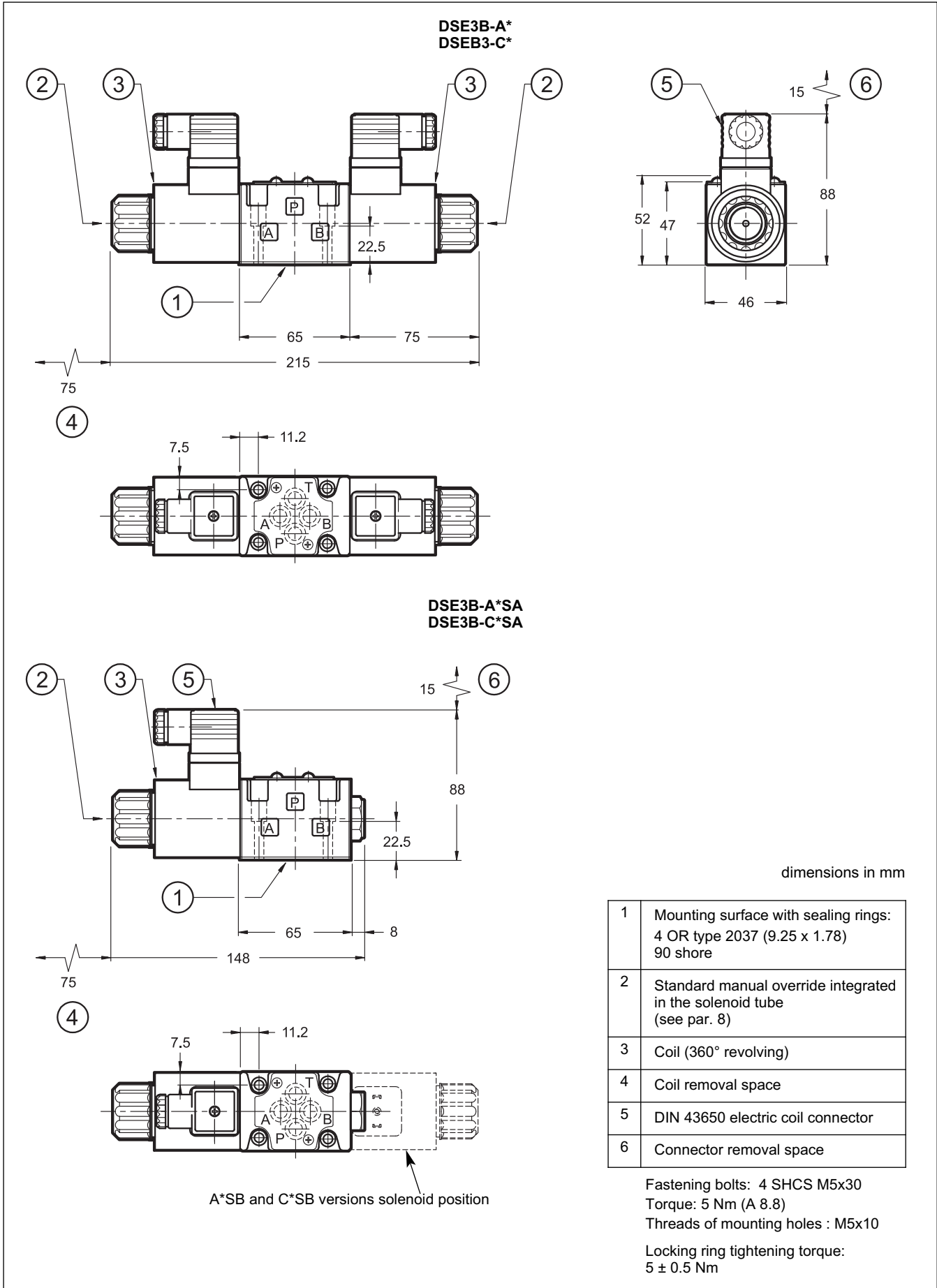
connection for DIN 43650
connector
code **K1 (standard)**
code **WK1** (W7 version only)



connection for
DEUTSCH DT06-2S male connector
code **K7**



7 - OVERALL AND MOUNTING DIMENSIONS

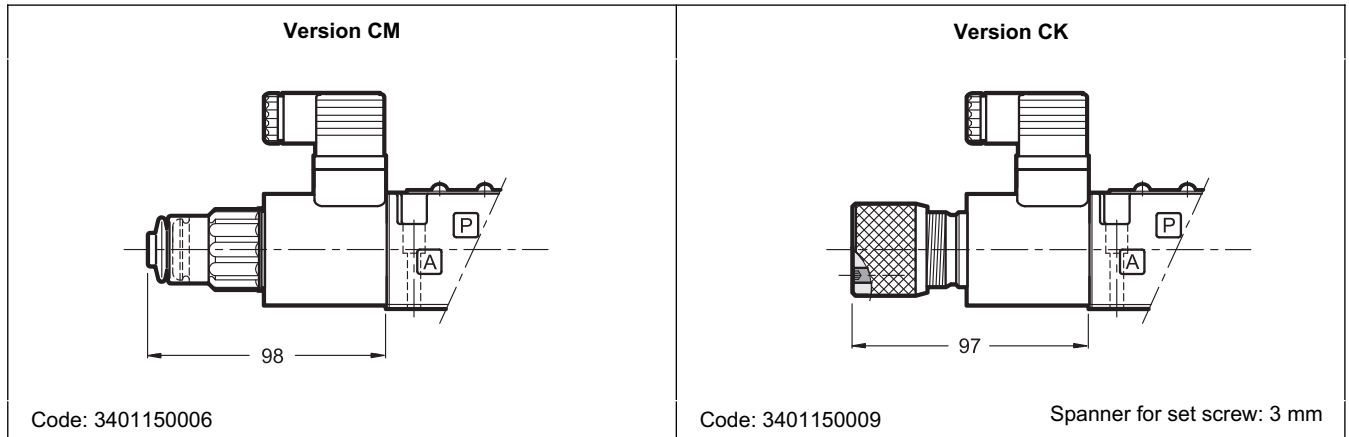


8 - MANUAL OVERRIDE

The standard valve has solenoids whose pin for the manual operation is integrated in the tube. The operation of this control must be executed with a suitable tool, minding not to damage the sliding surface.

Two different manual override version are available upon request:

- **CM** version, manual override belt protected.
- **CK** version, knob. When the set screw is screwed and its point is aligned with the edge of the knob, tighten the knob till it touches the spool: in this position the override is not engaged and the valve is de-energized. After adjusting the override, tighten the set screw in order to avoid the knob loosening.



9 - HYDRAULIC FLUIDS

Use mineral oil-based hydraulic fluids like HL or HM type, according to ISO 6743-4. With this kind of fluids, use NBR seals type (code N). For HFDR fluids type (phosphate esters) use FPM seals (code V). For use with other kind of fluids such as HFA, HFB, HFC please consult our technical department.

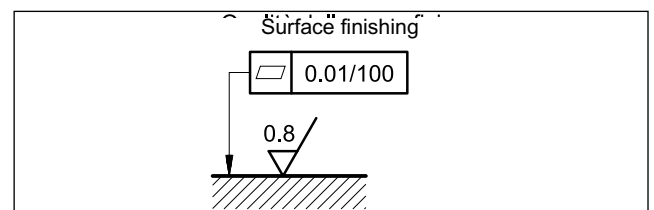
Operation with fluid temperature exceeding 80°C causes premature deterioration of the quality of the fluid and seals. The physical and chemical properties of the fluid must be maintained.

10 - INSTALLATION

DSE3B valves can be installed in any position without impairing correct operation.

Ensure that there is no air in the hydraulic circuit.

Valves are fixed by means of screws or tie rods on a flat surface with planarity and roughness equal to or better than those indicated in the relative symbols. If minimum values are not observed fluid can easily leak between the valve and support surface.





11 - ELECTRONIC CONTROL UNITS

DSE3B - ** SA (SB)

EDC-112	for solenoid 24V DC	plug version	see cat. 89 120
EDC-142	for solenoid 12V DC		
EDM-M112	for solenoid 24V DC	DIN EN 50022 rail mounting	see cat. 89 250
EDM-M142	for solenoid 12V DC		

DSE3B - A* DSE3B - C*

EDM-M212	24V DC solenoids	rail mounting DIN EN 50022	see cat. 89 250
EDM-M242	12V DC solenoids		

12 - SUBPLATES

(see catalogue 51 000)

Type PMMD-AI3G ports on rear (3/8" BSP threaded)
Type PMMD-AL3G side ports (3/8" BSP threaded)



DUPLOMATIC
OLEODINAMICA

DUPLOMATIC OLEODINAMICA S.p.A.

20015 PARABIAGO (MI) • Via M. Re Depaolini 24

Tel. +39 0331.895.111

Fax +39 0331.895.339

www.diplomatic.com • e-mail: sales.exp@diplomatic.com