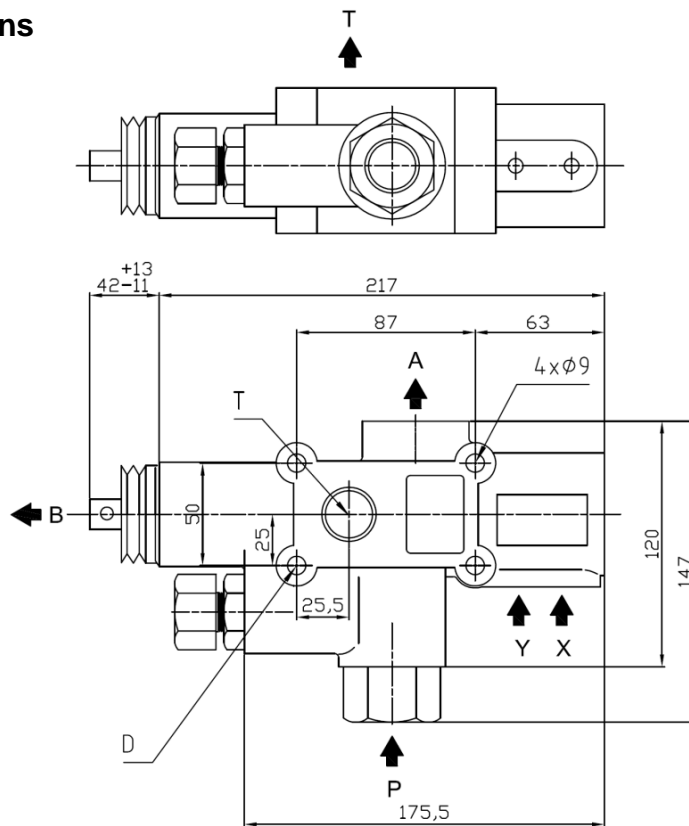


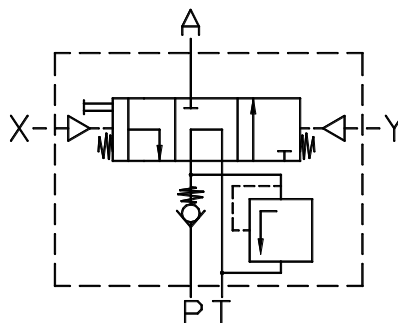


<b>Tipping Valve</b>		Ref. DTCA130
<b>DT</b>	Open Circuit 130 L	

### Main Dimensions



- A – Outlet 3/4" BSP
- B – Pull Stroke end
- P – Pump 3/4" BSP
- T – Tank 3/4" BSP
- X – Descent 1/8" BSP
- Y – Ascent 1/8" BSP



(Dimensions in mm)

### Main Data

<b>Maximum pressure (Bar)</b>	<b>350</b>
<b>Operating pressure (Bar)</b>	<b>up to 300</b>
<b>Flow rate (l/min)</b>	<b>130</b>
<b>Weight (kg)</b>	<b>5.2</b>

#### Notes:

- ✓ This tipping valve can be used in progressive descent with our air commands ABCD.
- ✓ Tighten the tipping valve with only three bolts. Do not use the "D" hole. Screw the three bolts with a max. tightening torque of 20 N.m (soft tightening).

ABER is constantly engaged in improving its products and, therefore, reserves itself the right to modify without any further notice the characteristics shown



**ABER - Embraiaagens e Comandos Hidráulicos - A. B. LDA**  
 Rua Francisco de Almeida, Nº 30 – Vila Nova da Telha – 4470 MAIA - Portugal  
 Telephone: +351.22.9438070 Fax: +351.22.9420823 e-mail: [aber@aber.pt](mailto:aber@aber.pt) <http://www.aber.pt>



<b>Tipping Valve</b>		Ref. DTCA130H
<b>DT</b>	Open Circuit 130 l/min ; progressive descent, type H	

### Main Dimensions

**A** – Outlet 3/4" BSP  
**P** – Pump 3/4" BSP  
**T** – Tank 3/4" BSP  
**X** – Descent 1/8" BSP  
**Y** – Ascent 1/8" BSP

**(Dimensions in mm)**

Main Data	
Maximum pressure (Bar)	<b>350</b>
Operating pressure (Bar)	<b>up to 300</b>
Flow rate (l/min)	<b>130</b>
Approx. weight (kg)	<b>5.2</b>

- Notes:**
- ✓ This tipping valve can be used in progressive descent with our air commands ABCD.
  - ✓ Screw the three bolts with a max. tightening torque of 20 N.m (soft tightening).

ABER is constantly engaged in improving its products and, therefore, reserves itself the right to modify without any further notice the characteristics shown

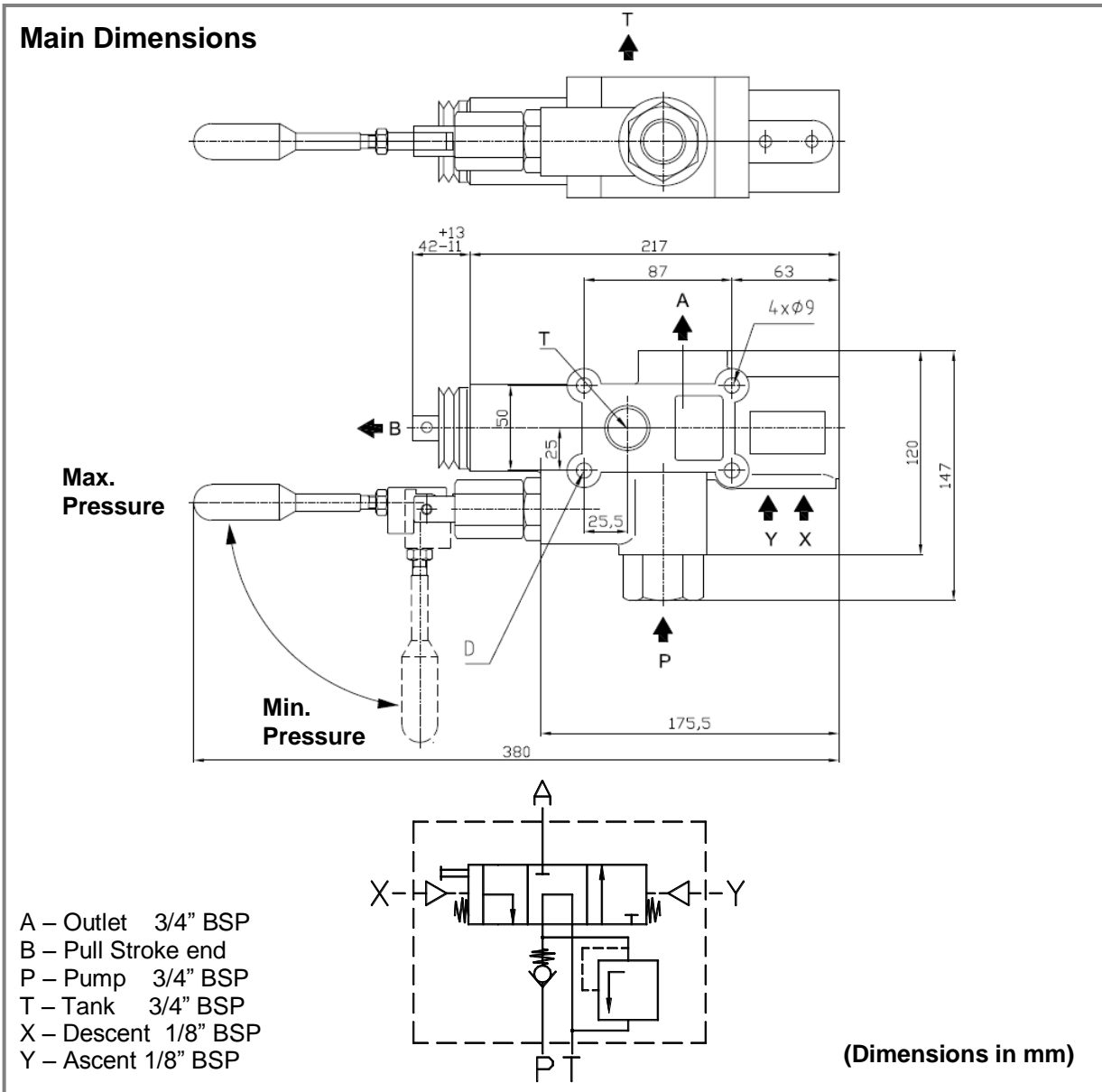


**ABER - Embraiaçens e Comandos Hidráulicos - A. B. LDA**  
 Rua Francisco de Almeida, Nº 30 – Vila Nova da Telha – 4470 MAIA - Portugal  
 Telephone: +351.22.9438070 Fax: +351.22.9420823 e-mail: [aber@aber.pt](mailto:aber@aber.pt) <http://www.aber.pt>

CTTDTCA130H 1504-1



<b>Tipping Valve</b>		Ref. DTCA1302P
<b>DT</b>	Open Circuit 130 L ; 2 Pressure Range	



<b>Main Data</b>	
<b>Maximum pressure (Bar)</b>	<b>350</b>
<b>Operating pressure (Bar)</b>	<b>up to 300</b>
<b>Flow rate (l/min)</b>	<b>130</b>
<b>Weight (kg)</b>	<b>5.5</b>

- Notes:**
- ✓ This tipping valve can be used in progressive descent with our air commands ABCD.
  - ✓ Tighten the tipping valve with only three bolts. Do not use the "D" hole. Screw the three bolts with a max. tightening torque of 20 N.m (soft tightening).

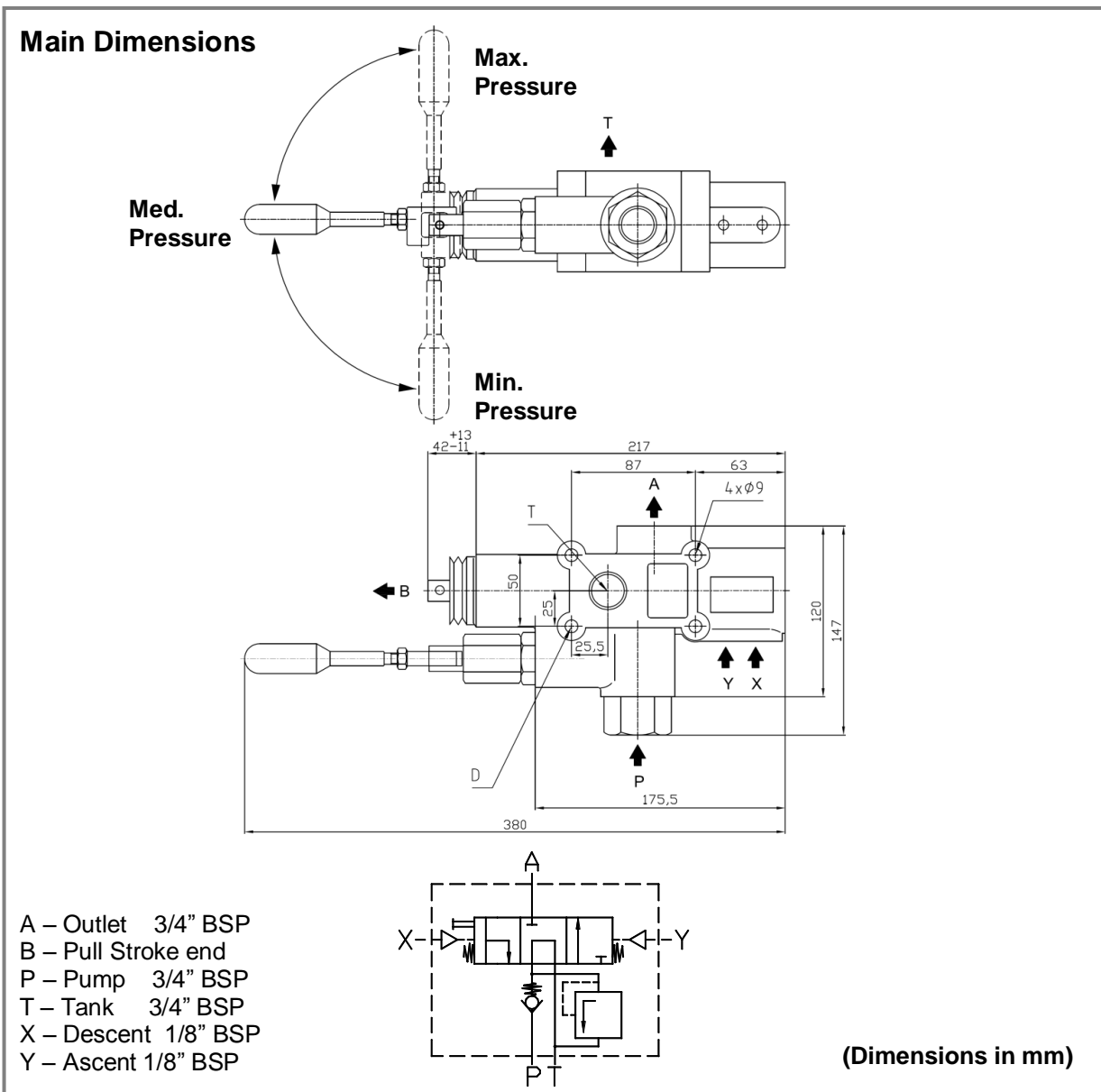
ABER is constantly engaged in improving its products and, therefore, reserves itself the right to modify without any further notice the characteristics shown



**ABER - Embraagens e Comandos Hidráulicos - A. B. LDA**  
 Rua Francisco de Almeida, Nº 30 – Vila Nova da Telha – 4470 MAIA - Portugal  
 Telephone: +351.22.9438070 Fax: +351.22.9420823 e-mail: [aber@aber.pt](mailto:aber@aber.pt) <http://www.aber.pt>



<b>Tipping Valve</b>		Ref. DTCA1303P
<b>DT</b>	Open Circuit 130 L ; 3 Pressure Range	



<b>Main Data</b>	
<b>Maximum pressure (Bar)</b>	<b>350</b>
<b>Operating pressure (Bar)</b>	<b>up to 300</b>
<b>Flow rate (l/min)</b>	<b>130</b>
<b>Weight (kg)</b>	<b>5.5</b>

**Notes:**

- ✓ This tipping valve can be used in progressive descent with our air commands ABCD
- ✓ Tighten the tipping valve with only three bolts. Do not use the "D" hole. Screw the three bolts with a max. tightening torque of 20 N.m (soft tightening).

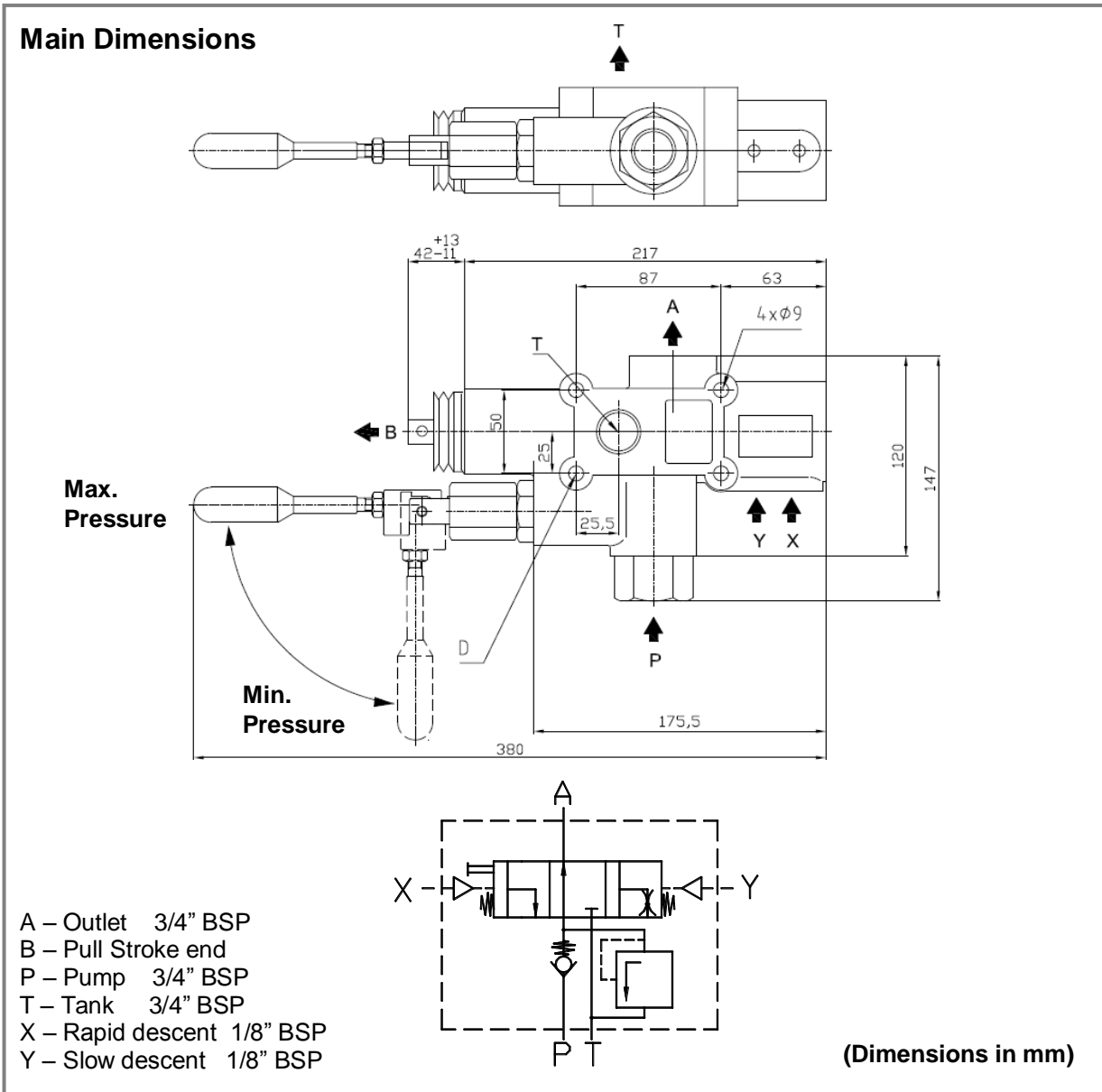
ABER is constantly engaged in improving its products and, therefore, reserves itself the right to modify without any further notice the characteristics shown



**ABER - Embraigens e Comandos Hidráulicos - A. B. LDA**  
 Rua Francisco de Almeida, Nº 30 – Vila Nova da Telha – 4470 MAIA - Portugal  
 Telephone: +351.22.9438070 Fax: +351.22.9420823 e-mail: [aber@aber.pt](mailto:aber@aber.pt) <http://www.aber.pt>



<b>Tipping Valve</b>		Ref. VVLR1302P
<b>VV</b>	Close Circuit 130 L ; 2 Pressure Range	



Main Data	
<b>Maximum pressure (Bar)</b>	<b>350</b>
<b>Operating pressure (Bar)</b>	<b>up to 300</b>
<b>Flow rate (l/min)</b>	<b>130</b>
<b>Weight (kg)</b>	<b>5.5</b>

- Notes:**
- ✓ This tipping valve can be used in progressive descent with our air commands ABCD.
  - ✓ Tighten the tipping valve with only three bolts. Do not use the "D" hole. Screw the three bolts with a max. tightening torque of 20 N.m (soft tightening).

ABER is constantly engaged in improving its products and, therefore, reserves itself the right to modify without any further notice the characteristics shown

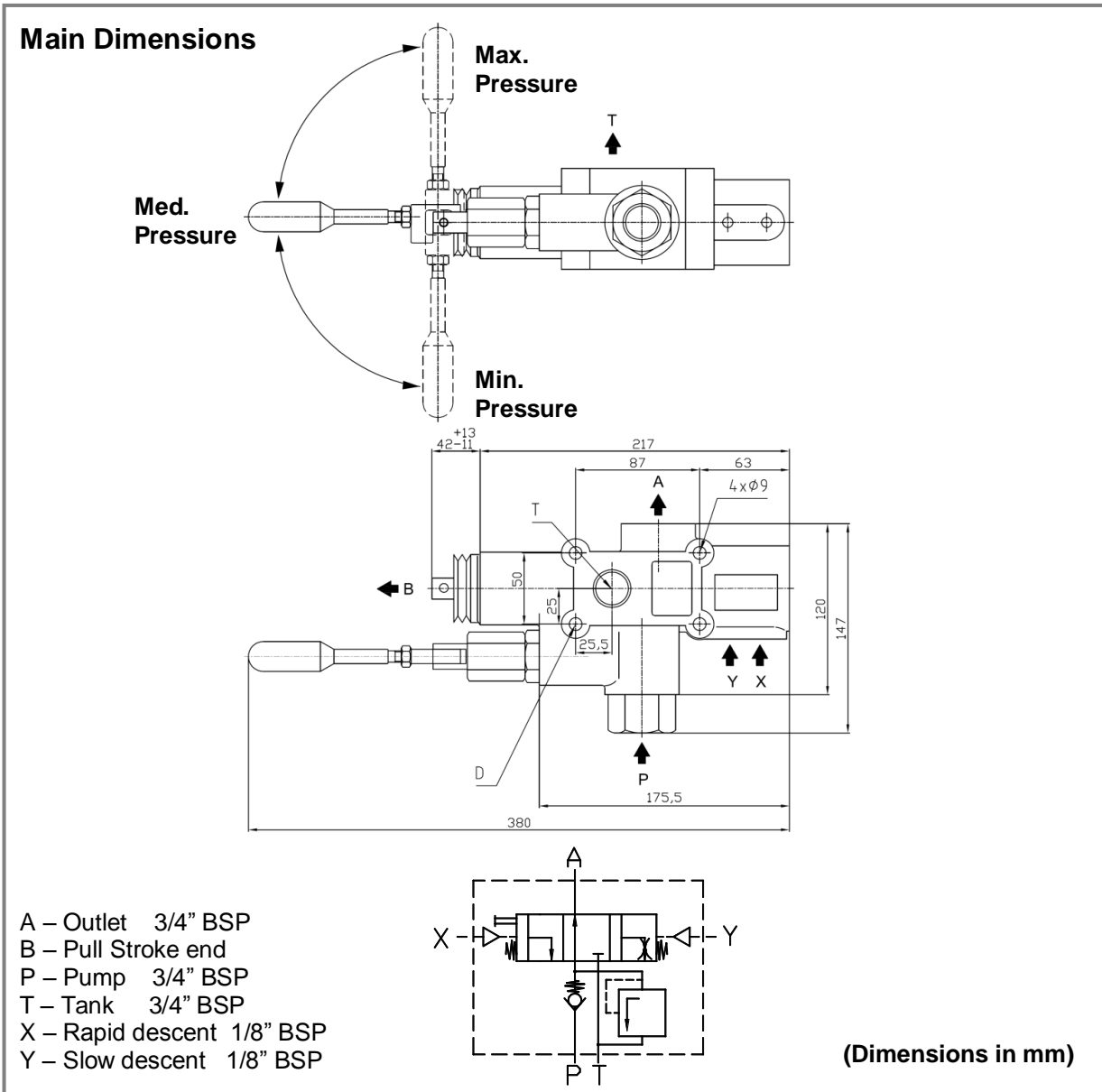


**ABER - Embraigens e Comandos Hidráulicos - A. B. LDA**  
 Rua Francisco de Almeida, Nº 30 – Vila Nova da Telha – 4470 MAIA - Portugal  
 Telephone: +351.22.9438070 Fax: +351.22.9420823 e-mail: [aber@aber.pt](mailto:aber@aber.pt) <http://www.aber.pt>

CTI VVLR1302P 1504- 3



<b>Tipping Valve</b>		Ref. VVLR1303P
<b>VV</b>	Close Circuit 130 L ; 3 Pressure Range	



<b>Main Data</b>	
<b>Maximum pressure (Bar)</b>	<b>350</b>
<b>Operating pressure (Bar)</b>	<b>up to 300</b>
<b>Flow rate (l/min)</b>	<b>130</b>
<b>Weight (kg)</b>	<b>5.5</b>

- Notes:**
- ✓ This tipping valve can be used in progressive descent with our air commands ABCD.
  - ✓ Tighten the tipping valve with only three bolts. Do not use the "D" hole. Screw the three bolts with a max. tightening torque of 20 N.m (soft tightening).

ABER is constantly engaged in improving its products and, therefore, reserves itself the right to modify without any further notice the characteristics shown



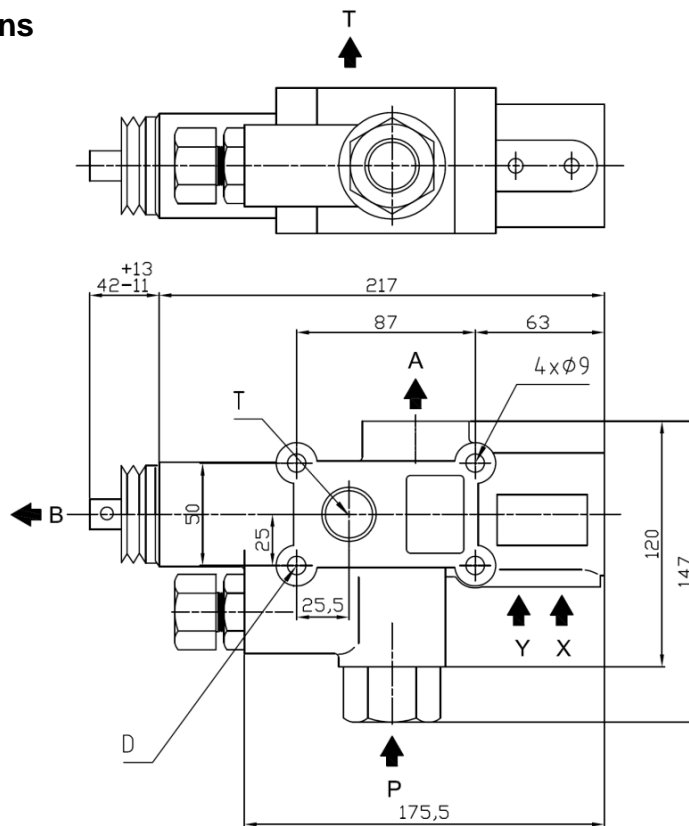
**ABER - Embraagens e Comandos Hidráulicos - A. B. LDA**  
 Rua Francisco de Almeida, Nº 30 – Vila Nova da Telha – 4470 MAIA - Portugal  
 Telephone: +351.22.9438070 Fax: +351.22.9420823 e-mail: [aber@aber.pt](mailto:aber@aber.pt) <http://www.aber.pt>

CTI VVLR1303P 1504- 3

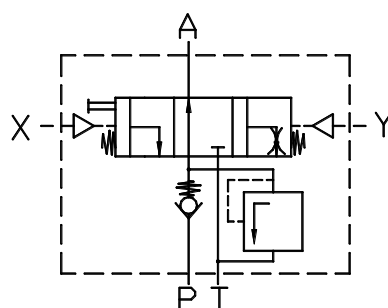


<b>Tipping Valve</b>		Ref. VVLR13001
<b>VV</b>	Close Circuit 130 L	

### Main Dimensions



- A – Outlet 1" BSP
- B – Pull Stroke end
- P – Pump 1" BSP
- T – Tank 1" BSP
- X – Rapid descent 1/8" BSP
- Y – Slow descent 1/8" BSP



(Dimensions in mm)

### Main Data

<b>Maximum pressure (Bar)</b>	<b>350</b>
<b>Operating pressure (Bar)</b>	<b>up to 300</b>
<b>Flow rate (l/min)</b>	<b>130</b>
<b>Weight (kg)</b>	<b>5.2</b>

#### Notes:

- ✓ This tipping valve can be used in progressive descent with our air commands ABCD.
- ✓ Tighten the tipping valve with only three bolts. Do not use the "D" hole. Screw the three bolts with a max. tightening torque of 20 N.m (soft tightening).

ABER is constantly engaged in improving its products and, therefore, reserves itself the right to modify without any further notice the characteristics shown

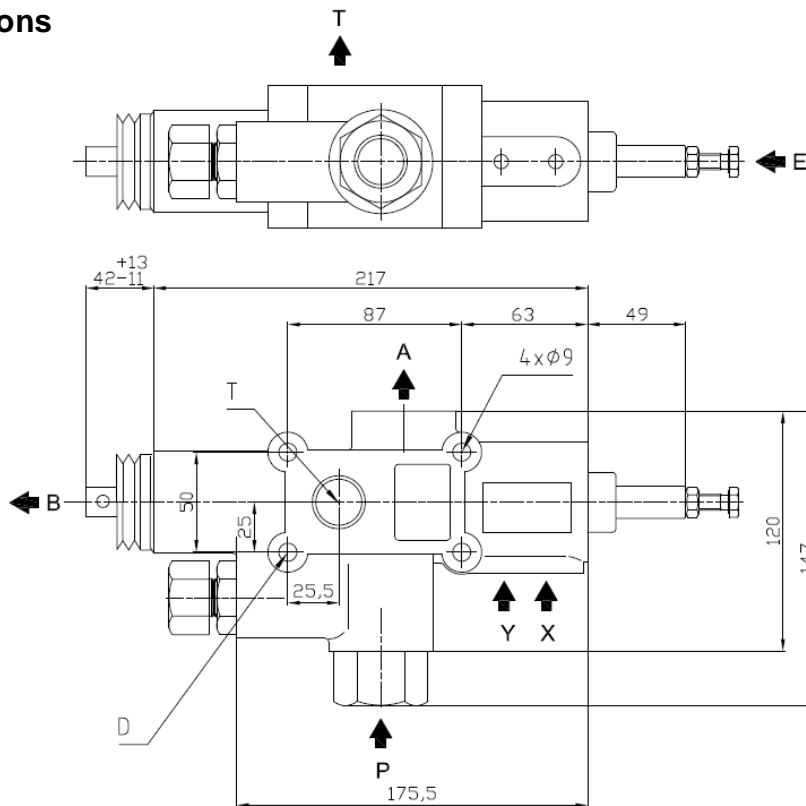


**ABER - Embraagens e Comandos Hidráulicos - A. B. LDA**  
 Rua Francisco de Almeida, Nº 30 – Vila Nova da Telha – 4470 MAIA - Portugal  
 Telephone: +351.22.9438070 Fax: +351.22.9420823 e-mail: [aber@aber.pt](mailto:aber@aber.pt) <http://www.aber.pt>

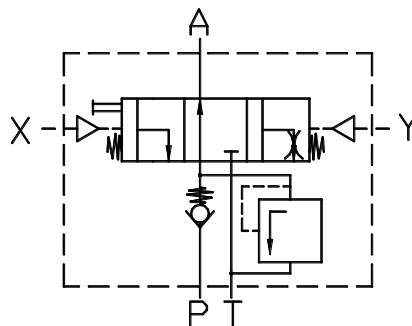


<b>Tipping Valve</b>		Ref. VVLR130F VVP130F
<b>VV</b>	Close Circuit 130 L ; Push Stroke End	

### Main Dimensions



- A – Outlet 3/4" BSP
- B – Pull Stroke end
- E – Push Stroke end
- P – Pump 3/4" BSP
- T – Tank 3/4" BSP
- X – Rapid descent 1/8" BSP
- Y – Slow descent 1/8" BSP



(Dimensions in mm)

### Main Data

<b>Maximum pressure (Bar)</b>	<b>350</b>
<b>Operating pressure (Bar)</b>	<b>up to 300</b>
<b>Flow rate (l/min)</b>	<b>130</b>
<b>Weight (kg)</b>	<b>5.2</b>

#### Notes:

- ✓ This tipping valve can be used in progressive descent with our air commands ABCD.
- ✓ Tighten the tipping valve with only three bolts. Do not use the "D" hole. Screw the three bolts with a max. tightening torque of 20 N.m (soft tightening).

ABER is constantly engaged in improving its products and, therefore, reserves itself the right to modify without any further notice the characteristics shown



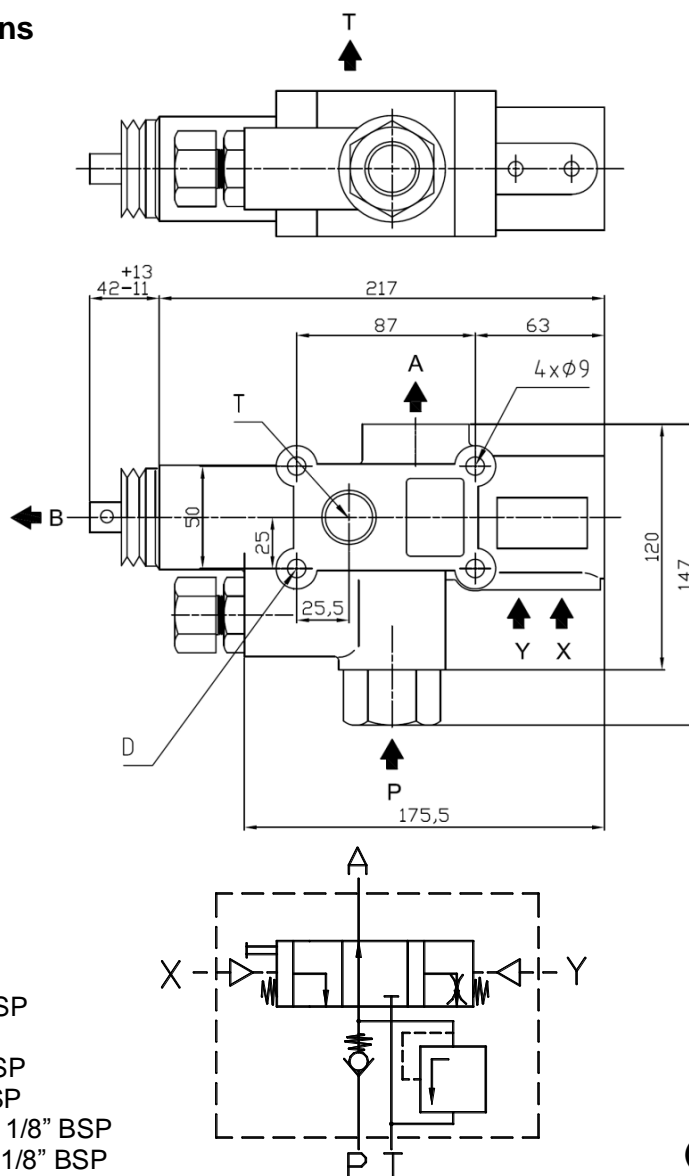
**ABER - Embraigens e Comandos Hidráulicos - A. B. LDA**  
 Rua Francisco de Almeida, Nº 30 – Vila Nova da Telha – 4470 MAIA - Portugal  
 Telephone: +351.22.9438070 Fax: +351.22.9420823 e-mail: [aber@aber.pt](mailto:aber@aber.pt) <http://www.aber.pt>





<b>Tipping Valve</b>		Ref. VVLR130 VVP130
<b>VV</b>	Close Circuit 130 L	

### Main Dimensions



- A – Outlet 3/4" BSP
- B – Pull Stroke end
- P – Pump 3/4" BSP
- T – Tank 3/4" BSP
- X – Rapid descent 1/8" BSP
- Y – Slow descent 1/8" BSP

(Dimensions in mm)

### Main Data

<b>Maximum pressure (Bar)</b>	<b>350</b>
<b>Operating pressure (Bar)</b>	<b>up to 300</b>
<b>Flow rate (l/min)</b>	<b>130</b>
<b>Weight (kg)</b>	<b>5.2</b>

#### Notes:

- ✓ This tipping valve can be used in progressive descent with our air commands ABCD.
- ✓ Tighten the tipping valve with only three bolts. Do not use the "D" hole. Screw the three bolts with a max. tightening torque of 20 N.m (soft tightening).

ABER is constantly engaged in improving its products and, therefore, reserves itself the right to modify without any further notice the characteristics shown



**ABER - Embraigens e Comandos Hidráulicos - A. B. LDA**  
 Rua Francisco de Almeida, Nº 30 – Vila Nova da Telha – 4470 MAIA - Portugal  
 Telephone: +351.22.9438070 Fax: +351.22.9420823 e-mail: [aber@aber.pt](mailto:aber@aber.pt) <http://www.aber.pt>



<b>Tipping Valve</b>		Ref. DTCA130M
<b>DT</b>	Open Circuit 130 l/min.	

### Main Dimensions

A – Outlet 3/4" BSP  
 M – Mechanical Control  
 P – Pump 3/4" BSP  
 T – Tank 3/4" BSP

**(Dimensions in mm)**

Main Data	
<b>Maximum pressure (Bar)</b>	<b>350</b>
<b>Operating pressure (Bar)</b>	<b>up to 300</b>
<b>Flow rate (l/min)</b>	<b>130</b>
<b>Weight (kg)</b>	<b>5.2</b>

**Notes:**  
 ✓ Tighten the tipping valve with only three bolts. Do not use the "D" hole. Screw the three bolts with a max. tightening torque of 20 N.m (soft tightening).

CTI DTCA130M 1508-0

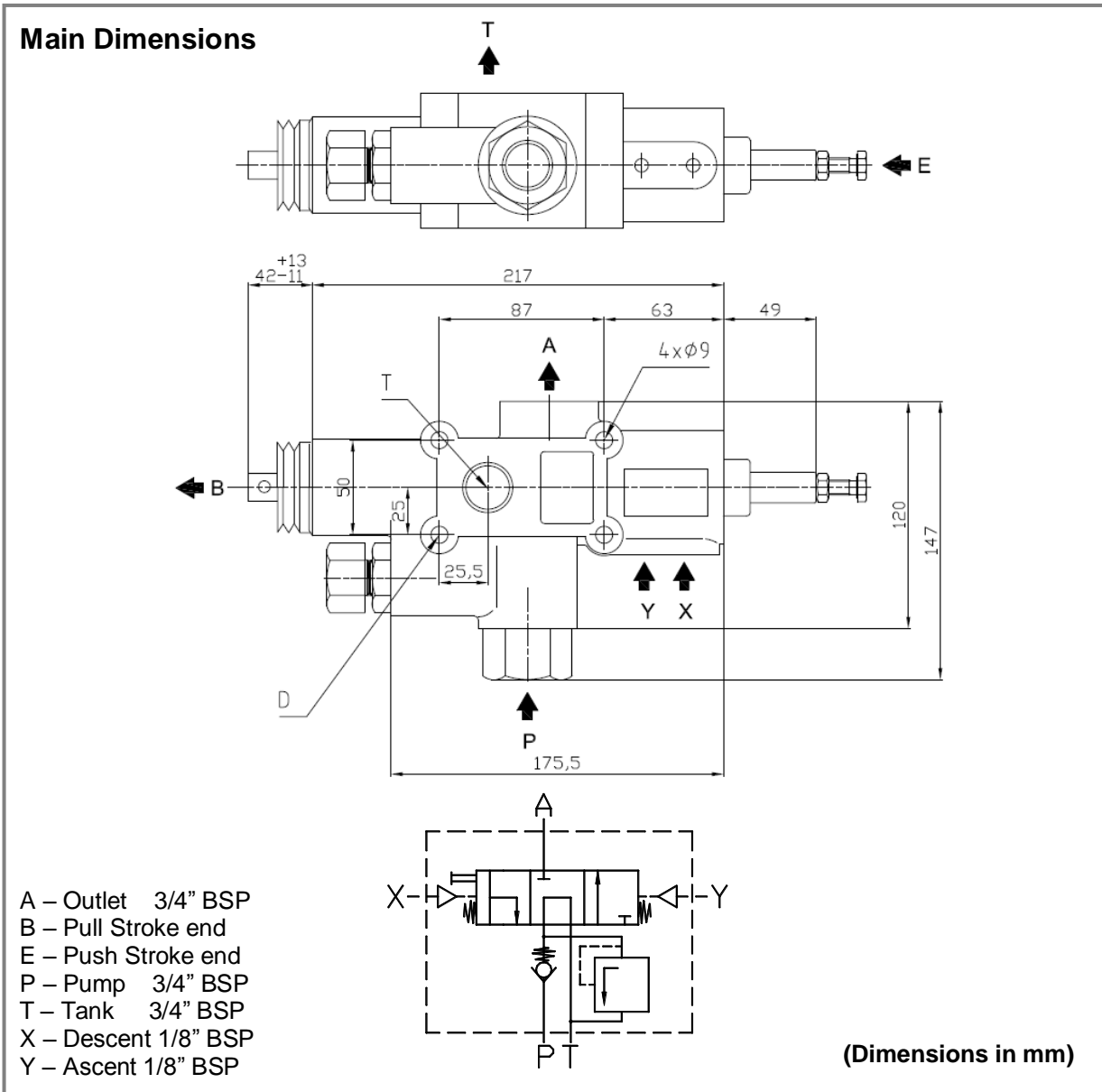
ABER is constantly engaged in improving its products and, therefore, reserves itself the right to modify without any further notice the characteristics shown



**ABER - Embraagens e Comandos Hidráulicos - A. B. LDA**  
 Rua Francisco de Almeida, Nº 30 – Vila Nova da Telha – 4470 MAIA - Portugal  
 Telephone: +351.22.9438070 Fax: +351.22.9420823 e-mail: [aber@aber.pt](mailto:aber@aber.pt) <http://www.aber.pt>



<b>Tipping Valve</b>		Ref. DTCA130F
<b>DT</b>	Open Circuit 130 L ; Push Stroke End	



<b>Main Data</b>	
<b>Maximum pressure (Bar)</b>	<b>350</b>
<b>Operating pressure (Bar)</b>	<b>up to 300</b>
<b>Flow rate (l/min)</b>	<b>130</b>
<b>Weight (kg)</b>	<b>5.2</b>

- Notes:**
- ✓ This tipping valve can be used in progressive descent with our air commands ABCD.
  - ✓ Tighten the tipping valve with only three bolts. Do not use the "D" hole. Screw the three bolts with a max. tightening torque of 20 N.m (soft tightening).

ABER is constantly engaged in improving its products and, therefore, reserves itself the right to modify without any further notice the characteristics shown

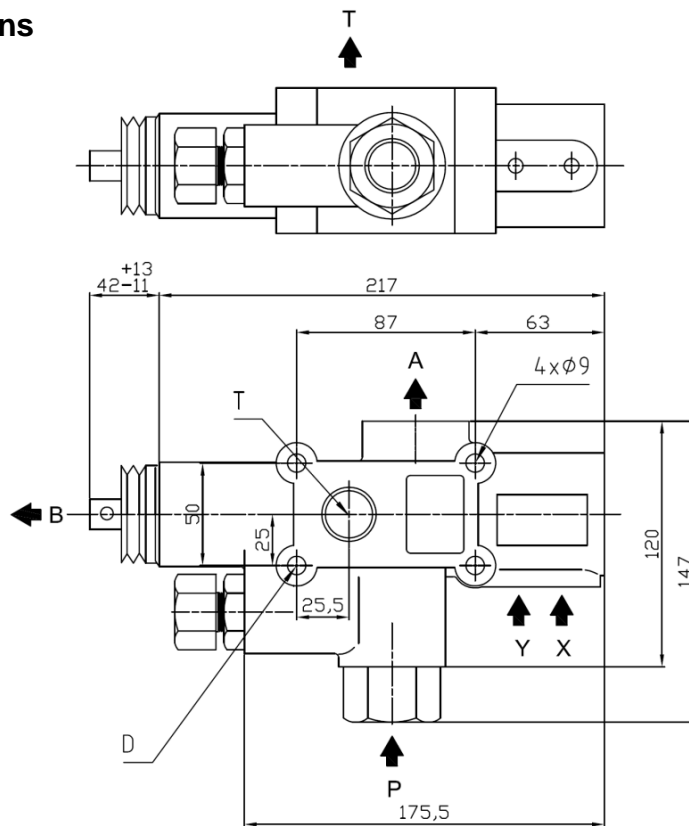


**ABER - Embraiaçens e Comandos Hidráulicos - A. B. LDA**  
 Rua Francisco de Almeida, Nº 30 – Vila Nova da Telha – 4470 MAIA - Portugal  
 Telephone: +351.22.9438070 Fax: +351.22.9420823 e-mail: [aber@aber.pt](mailto:aber@aber.pt) <http://www.aber.pt>

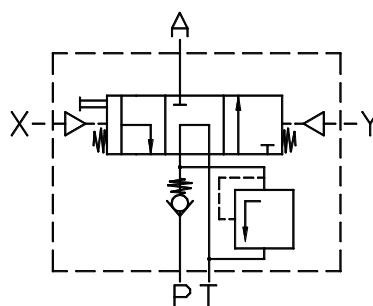


<b>Tipping Valve</b>		Ref. DTCA13001
<b>DT</b>	Open Circuit 130 L	

### Main Dimensions



- A – Outlet 1" BSP
- B – Pull Stroke end
- P – Pump 1" BSP
- T – Tank 1" BSP
- X – Descent 1/8" BSP
- Y – Ascent 1/8" BSP



(Dimensions in mm)

### Main Data

<b>Maximum pressure (Bar)</b>	<b>350</b>
<b>Operating pressure (Bar)</b>	<b>up to 300</b>
<b>Flow rate (l/min)</b>	<b>130</b>
<b>Weight (kg)</b>	<b>5.2</b>

#### Notes:

- ✓ This tipping valve can be used in progressive descent with our air commands ABCD.
- ✓ Tighten the tipping valve with only three bolts. Do not use the "D" hole. Screw the three bolts with a max. tightening torque of 20 N.m (soft tightening).

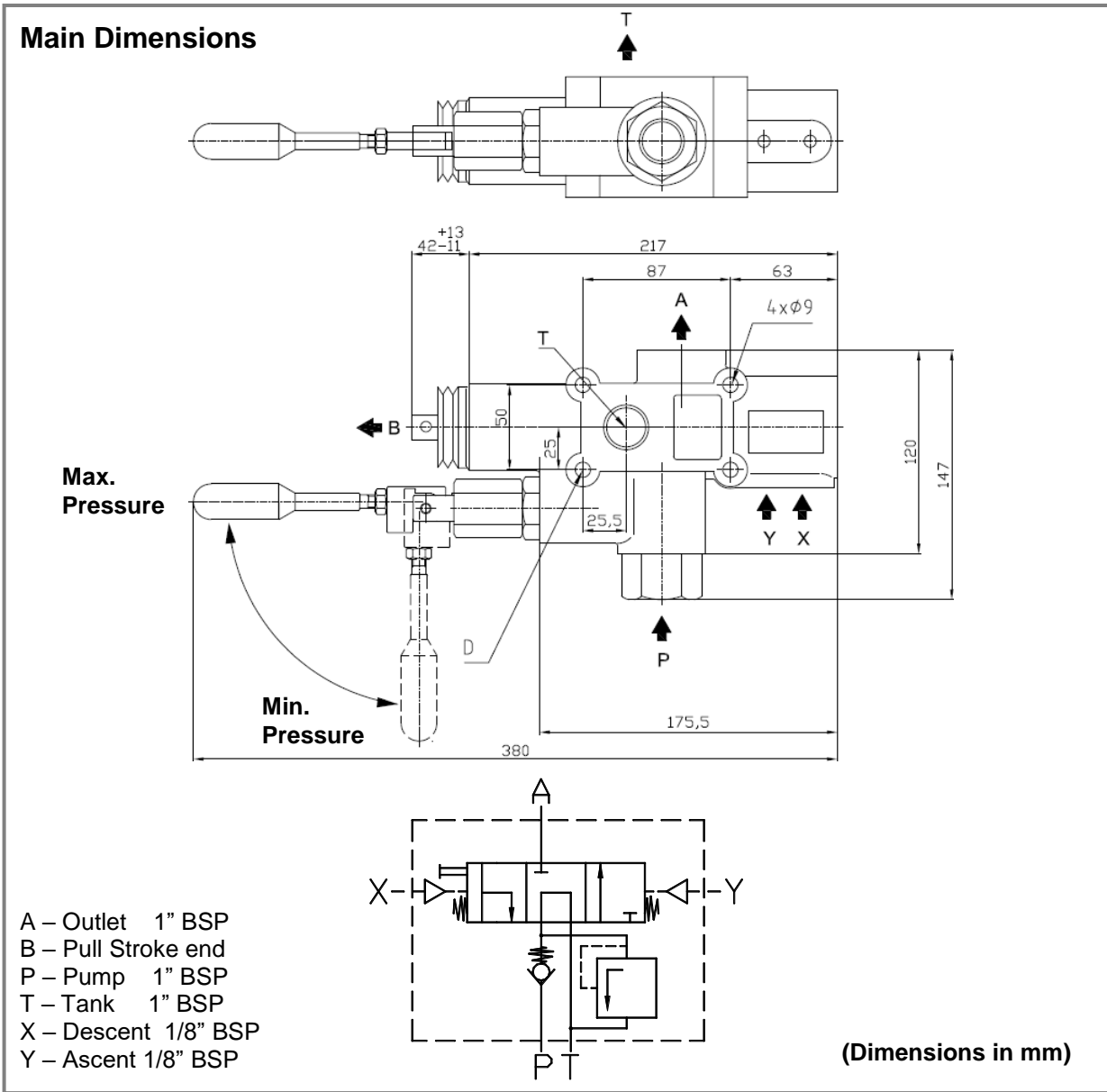
ABER is constantly engaged in improving its products and, therefore, reserves itself the right to modify without any further notice the characteristics shown



**ABER - Embraigens e Comandos Hidráulicos - A. B. LDA**  
 Rua Francisco de Almeida, Nº 30 – Vila Nova da Telha – 4470 MAIA - Portugal  
 Telephone: +351.22.9438070 Fax: +351.22.9420823 e-mail: [aber@aber.pt](mailto:aber@aber.pt) <http://www.aber.pt>



<b>Tipping Valve</b>		Ref. DTCA130012P
<b>DT</b>	Open Circuit 130 L ; 1" BSP ; 2 Pressure Range	



<b>Main Data</b>	
<b>Maximum pressure (Bar)</b>	<b>350</b>
<b>Flow rate (l/min)</b>	<b>130</b>
<b>Weight (kg)</b>	<b>5.5</b>

- Notes:**
- ✓ This tipping valve can be used in progressive descent with our air commands ABCD.
  - ✓ Tighten the tipping valve with only three bolts. Do not use the "D" hole. Screw the three bolts with a max. tightening torque of 20 N.m (soft tightening).

ABER is constantly engaged in improving its products and, therefore, reserves itself the right to modify without any further notice the characteristics shown

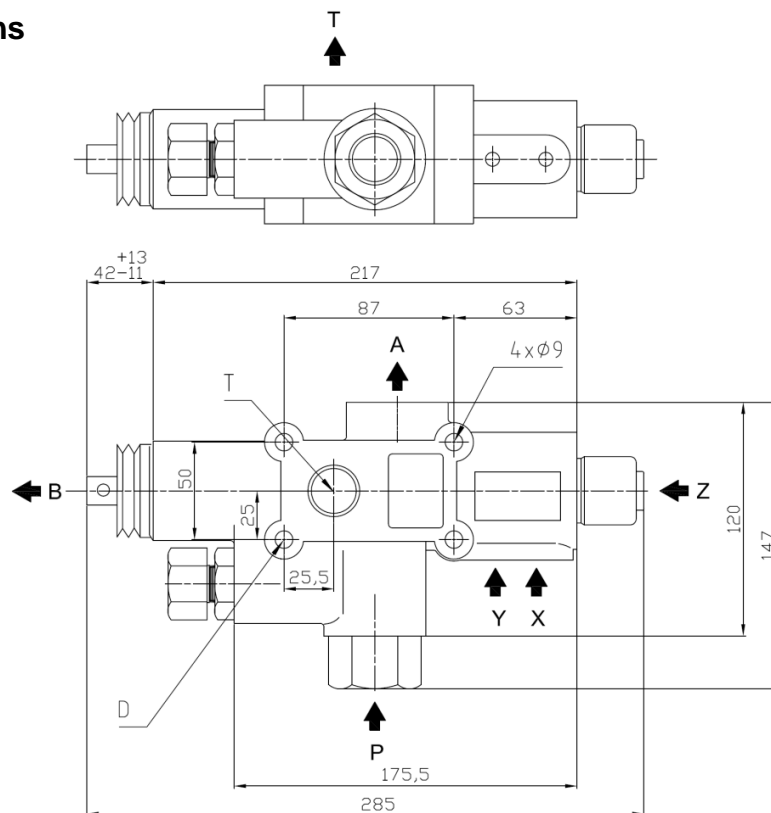


**ABER - Embraiagens e Comandos Hidráulicos - A. B. LDA**  
 Rua Francisco de Almeida, Nº 30 – Vila Nova da Telha – 4470 MAIA - Portugal  
 Telephone: +351.22.9438070 Fax: +351.22.9420823 e-mail: [aber@aber.pt](mailto:aber@aber.pt) <http://www.aber.pt>



<b>Tipping Valve</b>		Ref. DTCA1302V
<b>DT</b>	Open Circuit 130 L ; 2 Descent Speeds	

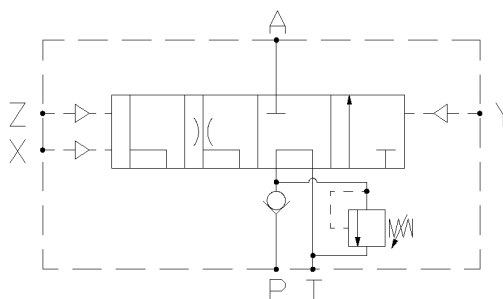
### Main Dimensions



### 2 Descent speed

X – Fast Descent 1/8" BSP  
 Z – Slow Descent 1/8" BSP  
 Y – Ascent 1/8" BSP

A – Outlet 3/4" BSP  
 B – Pull Stroke end  
 P – Pump 3/4" BSP  
 T – Tank 3/4" BSP



(Dimensions in mm)

### Main Data

<b>Maximum pressure (Bar)</b>	<b>350</b>
<b>Operating pressure (Bar)</b>	<b>up to 300</b>
<b>Flow rate (l/min)</b>	<b>130</b>
<b>Weight (kg)</b>	<b>6</b>

#### Note:

- ✓ This tipping valve can be used in progressive descent with our air commands ABCD.
- ✓ Tighten the tipping valve with only three bolts. Do not use the "D" hole. Screw the three bolts with a max. tightening torque of 20 N.m (soft tightening).

ABER is constantly engaged in improving its products and, therefore, reserves itself the right to modify without any further notice the characteristics shown



**ABER - Embraagens e Comandos Hidráulicos - A. B. LDA**  
 Rua Francisco de Almeida, Nº 30 – Vila Nova da Telha – 4470 MAIA - Portugal  
 Telephone: +351.22.9438070 Fax: +351.22.9420823 e-mail: [aber@aber.pt](mailto:aber@aber.pt) <http://www.aber.pt>

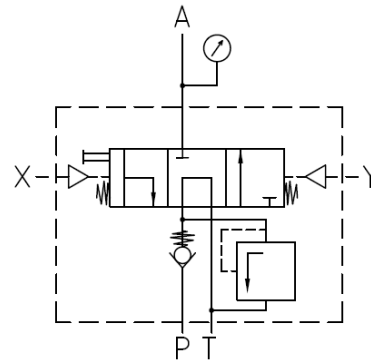
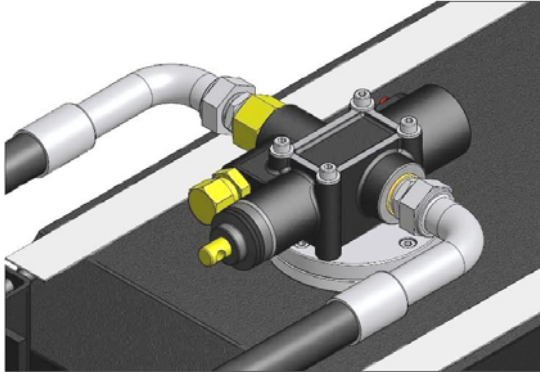


# INSTRUCTION TO ADJUST RELIEF VALVE UP TO 250bar DTCA130

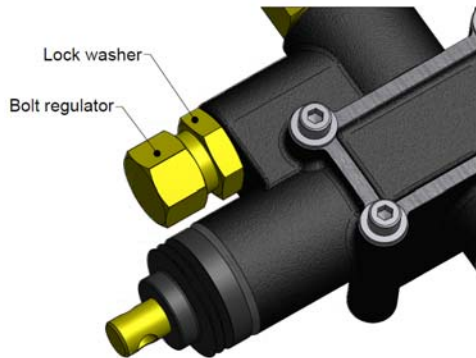
## Procedure:

A pressure relief valve is a safety device that relieves overpressure in a hydraulic circuit. When a relief valve is working properly, it protects all the system components against overpressures. To adjust a relief valve, the operator must respect and follow the next steps.

1st- Turn off the whall system and relieve all the pressure in the circuit. Put the air control in the descent position and install a manometer in line "A", please see picture.

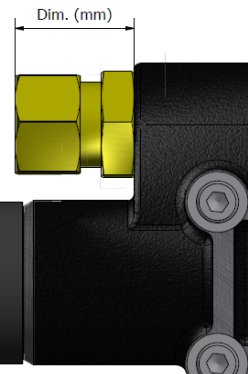


2nd- Unscrew the lock washer and tighten the bolt regulator to the correct pressure, following the dimensions in the drawing.



Indicative dimensions

Dim. (mm)	P (bar)
42	240
43	220
44	200
45	180
46	160
47	140



3rd- Tighten the lock washer, put the air control in the neutral position, turn on the system and work with it. Verify if the correct pressure is on manometer.

4th- With the correct pressure in the manometer, turn off the whall the system and relieve all the pressure in the circuit. Put the air control in the descent position and uninstall the manometer.

5th- Tighten everything well again. Put the air control in the neutral position, and your system is ready to work with the new pressure.

**Note :** ABER's pressure relief valves have different springs, lock washers and bolt regulators. The different working pressures are up to 250bar and higher than 250bar. A valve controlled to work at 160bar never can be adjusted for a pressure higher than 250bar, and a controlled valve to work at 300bar never can be adjusted to work up to 250bar.

CTI Instruction to adjust relief valve 1105- 0

ABER is constantly engaged in improving its products and, therefore, reserves itself the right to modify without any further notice the characteristics shown



**ABER - Embragens e Comandos Hidráulicos - A. B. LDA**

Rua Francisco de Almeida, Nº 30 – Vila Nova da Telha – 4470 MAIA - Portugal

Telephone: +351.22.9438070 Fax: +351.22.9420823 e-mail: [aber@aber.pt](mailto:aber@aber.pt) <http://www.aber.pt>