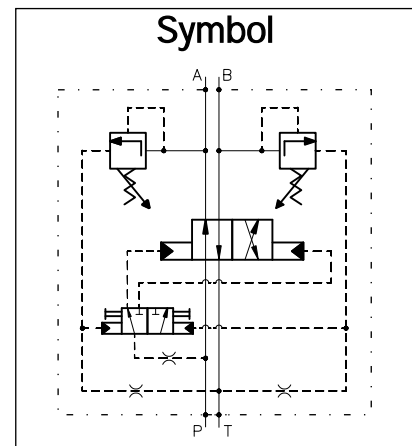
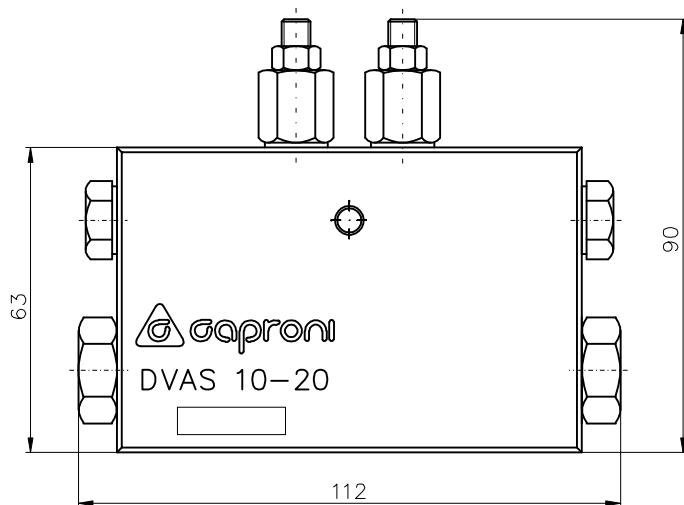
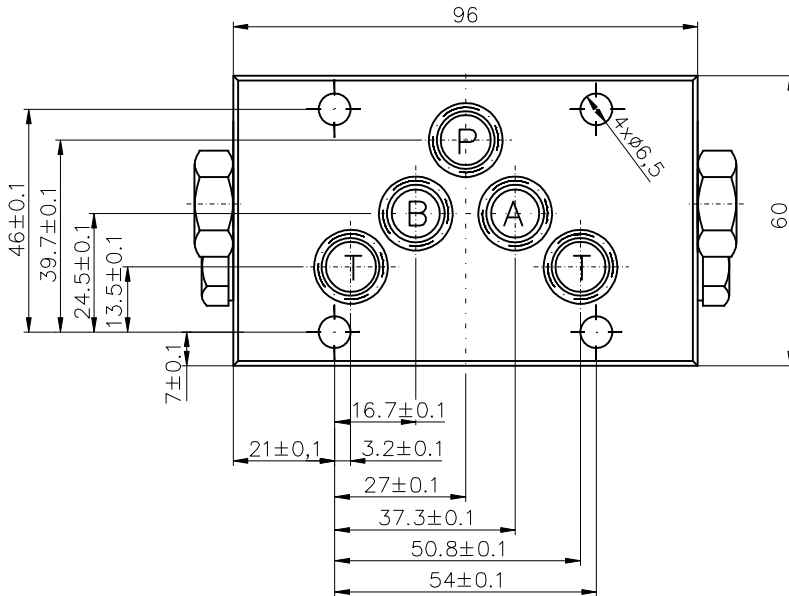


**GENERAL DESCRIPTION**

List: DVAS10-1-Oct 2015

Flow automatically reverses direction from P-A to P-B when the set value of pressure relief valves is reached.

- ✓ 4/2- way directional control valves with hydraulic pilot operation
- ✓ Manual override option
- ✓ Reliability and long life
- ✓ Mounting surface CETOP5 (NG10)


**ORDERING CODE**
**DVAS 10 - 20 ...**

 Automatic switch  
directional control  
valve

Nominal size

Pressure range:

**Omit** - 50...200bar.

**V1** - 0...100bar.

Direction of flow(symbol 20)

**TECHNICAL DATA**
**GENERAL**

DATA	UNIT	VALUE/RANGE
Installation position		preferably horizontal
Max. ambient temperature	°C	-20...+50
Weight	kg	2,400

**HYDRAULIC**

Max. pressure	MPa	21
Maximum flow	l/min	80
Minimum flow	l/min	4
Hydraulic fluid - mineral oil: -viscosity -filtration degree -temperature	mm <sup>2</sup> /s mm °C	10...800 0.025 -20...80