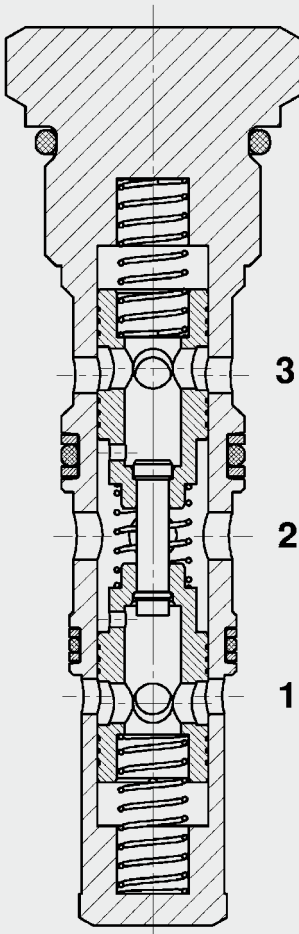


Up to 60 bar
Up to 350 l/min

FUNCTION



The ST12230-01 flow divider is a spring-loaded pressure-compensated spool type valve. It divides a flow in two and keeps both flows constant. The division is made according to the specified ratio - from port 2 to ports 1 and 3. As a flow combiner it combines two partial flows together - from ports 3 and 1 to port 2.

Flow Divider /Combiner Spool Type Metric Cartridge – 350 bar ST12230

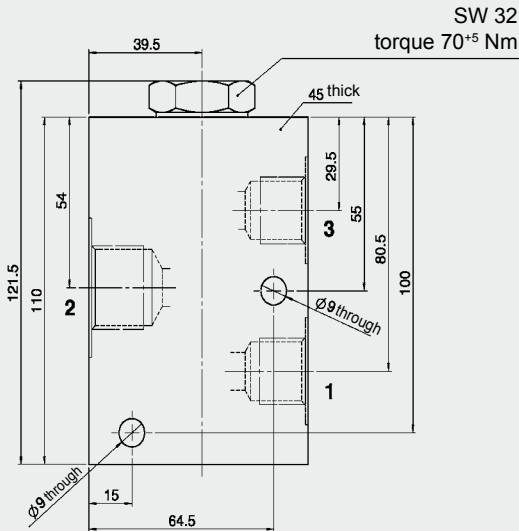
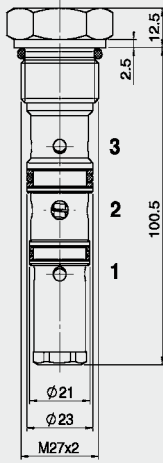
FEATURES

- Main use is as a differential lock in drive applications or for the synchronisation of two cylinders
- Synchronising flow in both operating modes
- Hardened and ground control piston to ensure minimal wear and extended service life
- Excellent dividing and combining accuracy
- Wide flow range down to 25% of nominal flow rating
- Compact design enables space-saving installation in connection housings and control blocks
- Various flow rates up to max. 60 l/min input flow rate

SPECIFICATIONS

Operating pressure:	max. 350 bar	
Nominal flow:	max. 60 l/min	
Inlet flow:	20 l/min	Model code 20
	60 l/min	Model code 60
Accuracy:	See performance curve	
Media operating temperature range:	min. -30 °C to max. +100 °C	
Ambient temperature range:	min. -30 °C bis max. +100 °C	
Operating fluid:	Hydraulic oil to DIN 51524 Part 1 and 2	
Viscosity range:	min. 7.4 mm ² /s to max. 420 mm ² /s	
Filtration:	Class 21/19/16 to ISO 4406 or cleaner	
MTTF _d :	150 years (see "Conditions and instructions for valves" in brochure 5.300)	
Installation:	No orientation restrictions	
Material:	Valve body:	high tensile steel
	Piston:	hardened and ground steel
	Seals:	NBR (standard) FKM (optional, media temperature range -20 °C to +120 °C)
	Back-up rings:	PTFE
Cavity:	12230 metric	
Weight:	0.27 kg	

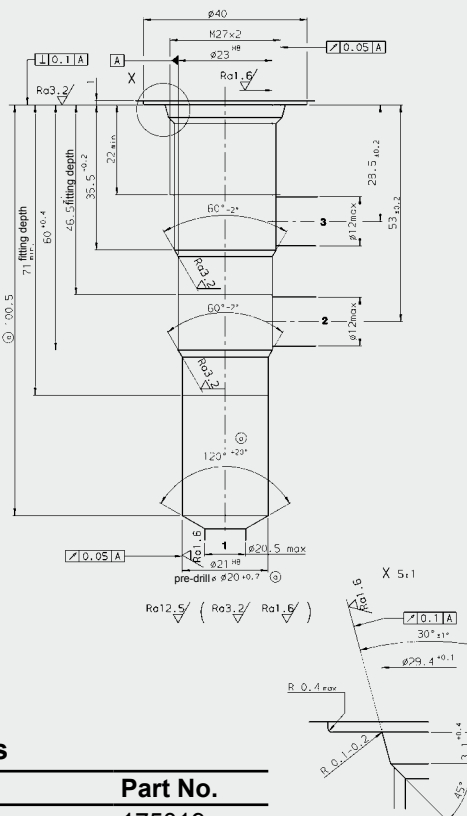
DIMENSIONS



Millimeter
Subject to technical modifications

CAVITY

12230



Millimeter
Subject to technical modifications

Form tools

Tool	Part No.
Countersink	175019
Reamer	175021

MODEL CODE

ST12230 - 01 X - 20

Basic model _____
Flow divider, metric

Type _____
01 = standard
04 = zinc-plated

Series _____
(determined by manufacturer)

Flow rate range _____
20 = up to 20 l/min
60 = up to 60 l/min

Code	Ratio Port 1 [%]	Ratio Port 3 [%]	Max. inlet flow [l/min]	Synchronization flow rate [l/min]
20	50	50	20	0.5
60	50	50	60	2.2

Standard models

Model code	Part No.
ST12230 - 01 X - 20	560637
ST12230 - 04 X - 60	560638

Other models on request

Standard in-line bodies

Code	Part No.	Material	Ports
R12230-01X-01	560705	Steel	G1/2, G3/4

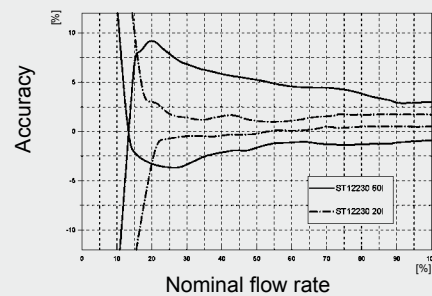
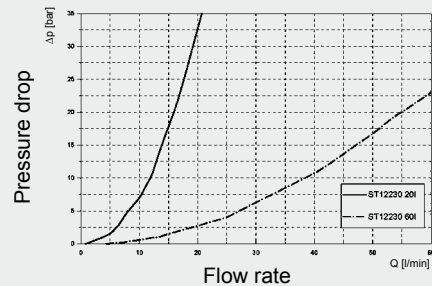
Seal kits

Code	Material	Part No.
Seal kit ST12230	FKM	3419571

PERFORMANCE

Measured at $v = 34 \text{ mm}^2/\text{s}$

T Oil = 46 °C



NOTE

The information in this brochure relates to the operating conditions and applications described. For applications or operating conditions not described, please contact the relevant technical department.
Subject to technical modifications.

HYDAC Fluidtechnik GmbH
Justus-von-Liebig-Str.
D-66280 Sulzbach/Saar
Tel: 0 68 97 /509-01
Fax: 0 68 97 /509-598
E-Mail: flutec@hydac.com