

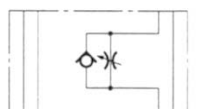


P_{max} = 350 bar
Q_{max} = 50 l/min

Needle Valve with reverse flow check Sandwich plate type ZW-SDR06

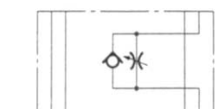
SYMBOL

ZW-SDR06 AA
P1 T1 A1 B1



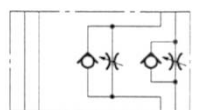
P2 T2 A2 B2

ZW-SDR06 AB
P1 T1 A1 B1



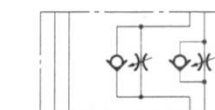
P2 T2 A2 B2

ZW-SDR06 AAB
P1 T1 A1 B1



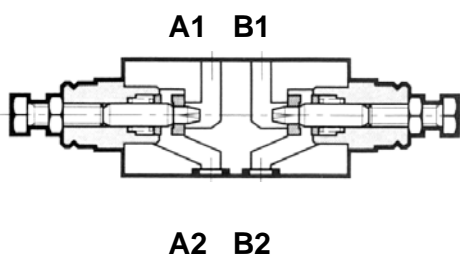
P2 T2 A2 B2

ZW-SDR06 ZAB
P1 T1 A1 B1



P2 T2 A2 B2

FUNCTION



FEATURES

- Hole pattern according to DIN 24340 Form A6, ISO 4401-03, nominal size 06
- adjustable needle valves with reverse flow check sandwich plate type for throttled flow in one direction and full flow in the opposite direction
- easy to assemble under body mounted spool valves according to DIN 24340 Form A6, ISO 4401 (use longer screws)
- type according to ISO 7790
- adjustable by tool

Types

- type AA: Drain in line A
- type AB: Drain in line B
- type AAB: Drain in line A, B
- type ZAB: Inlet in line A, B

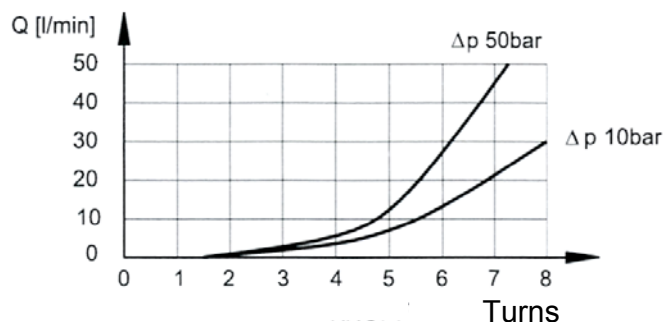
SPECIFICATIONS

- Operating pressure: max. 350 bar
- Cracking pressure: 0,5 bar
- Nominal flow: max. 50 l/min (in controlled lines)
max. 75 l/min (in free lines)
- Fluids: hydraulic oil according to DIN 51524 Part 1 / 2
- Media operating temp. range: -20°C up to max. +80°C
- Ambient temperature range: -20°C up to max. +50°C
- Viscosity range: 10 – 400 mm²/s is recommended
- Filtration: Class 20/18/15 to ISO 4406 or cleaner
- Weight: 1,3 kg incl. valves

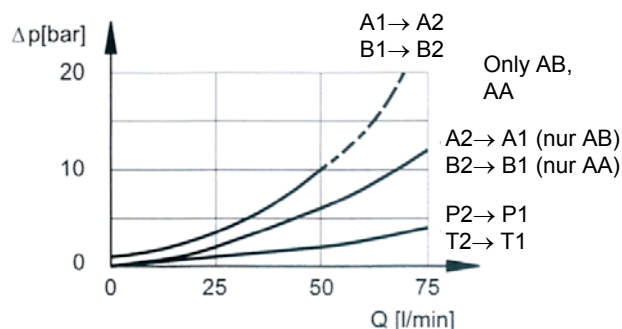
PERFORMANCE

measured at $v = 32\text{mm}^2/\text{s}$ and $T_{\text{oil}} = 50^\circ\text{C}$

Throttle curve



Pressure drop Δp -Q



Standard models	Part No.
ZW-SDR06-01-AA-V	6074186
ZW-SDR06-01-AB-V	6074187
ZW-SDR06-01-AAB-V	6074188
ZW-SDR06-01-ZAB-V	6074189
Other types on request	

MODEL CODE

ZW-SDR06 - 01-AA - V

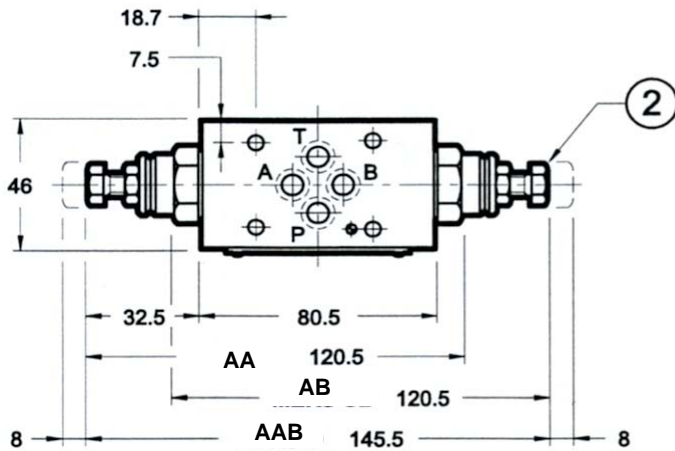
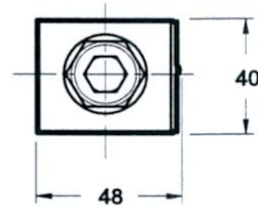
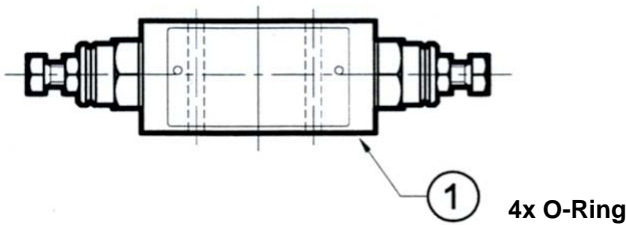
Name and nominal size _____
 Flow valve non return
 Sandwich plate type NW6

Series _____
 01 = Standard, phosphated

Types _____
 AA = drain control in line A
 AB = drain control in line B
 AAB = drain control in line A and B
 ZAB = inlet control in line A and B

Seals _____
 V = FKM (Standard)
 N = NBR

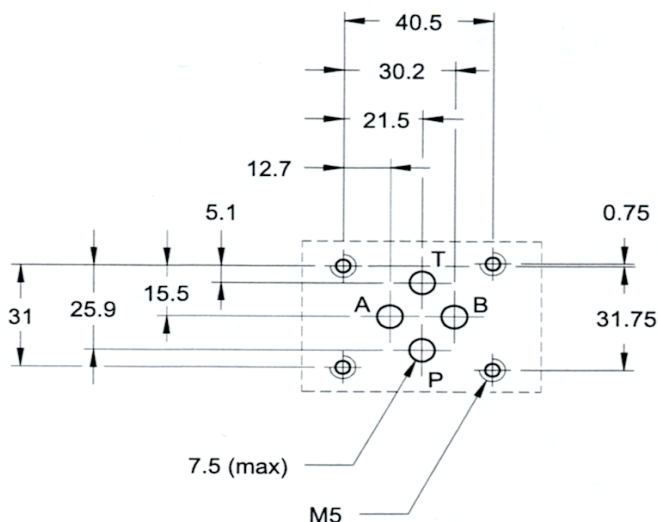
Dimensions



- 1 - O-Ring 9,25 x 1,78-90Sh FKM(4 pcs.)
- 2 - Adjustment screw with fixing nut, hex diameter 13.
By turning counter clockwise the nominal flow is increasing.

All dimensions in mm.
 Fixing elements are not in scope of delivery.

Mounting plate according to ISO 4401-03



Annotation
 The information in this brochure relates to the operating conditions and applications described. For applications or operating conditions not described, please contact the relevant technical department. Subject to technical modifications.

HYDAC Fluidtechnik GmbH
 Justus-von-Liebig-Str. 5
 D - 66280 Sulzbach / Saar
 Tel. 06897 / 509 -01
 Fax 06897 / 509 -598
 Email flutec@hydac.com