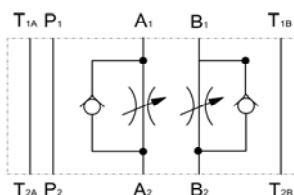




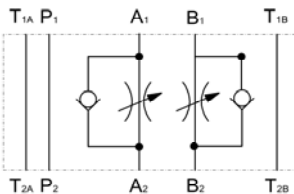
## Needle Valve with reverse flow check Sandwich plate type ZW-SDR10

up to 350 bar  
up to 100 l/min

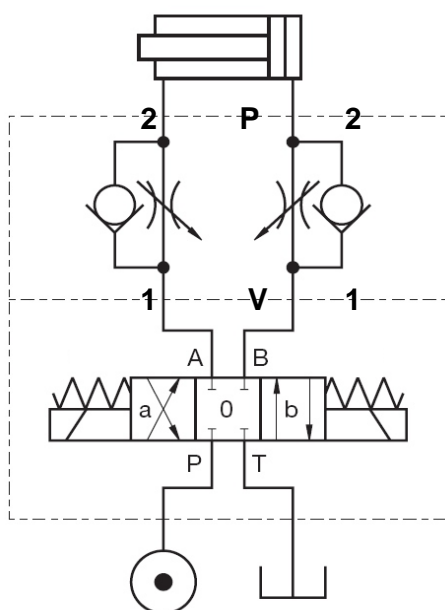
### SYMBOL ZW-SDR10 AAB



### ZW-SDR10 ZAB



### Function



### FEATURES

- Hole pattern to DIN 24340, ISO 4401, nominal size 10
- Adjustable needle valve with reverse flow check as sandwich plate housing to throttle in one direction and free backflow in the opposite direction
- easy to assemble under body mounted spool valves to DIN 24340, ISO 4401 (use longer screws)
- type to ISO 7790
- adjustable by tool

### Types

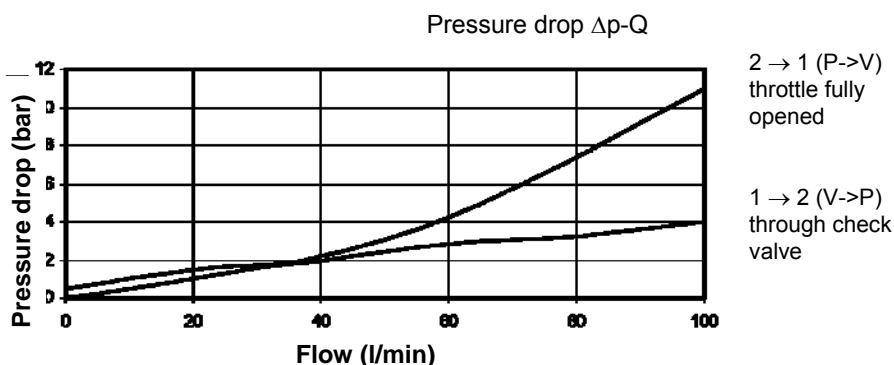
- type AAB / ZAB:  
The sandwich plate valve can be changed from downstream throttle to upstream throttle by turning through 180° (s. dimensions).

### SPECIFICATIONS

Nominal pressure:	max. 350 bar
Cracking pressure:	0,4 bar
Nominal flow:	max. 100 l/min
Fluids:	Hydraulic fluid to DIN 51524 part 1 and 2
Media operating temp. range:	-20°C up to max. +70°C
Ambient temperature range:	-20°C up to max. +50°C
Viscosity range:	15 – 380 mm <sup>2</sup> /s is recommended
Filtration:	Class 20/18/15 to ISO 4406 or cleaner
Weight:	3,3 kg incl. valve

### PERFORMANCE

measured at  $v = 32\text{mm}^2/\text{s}$  and  $T_{\text{oil}} = 50^\circ\text{C}$



**Standard models**  
 ZW-SDR10-01-AAB-V  
 ZW-SDR10-01-ZAB-V  
 other types on request

**Part No.**  
 6078911  
 6078909

**MODEL CODE**

ZW - SDR10-01-AAB - V

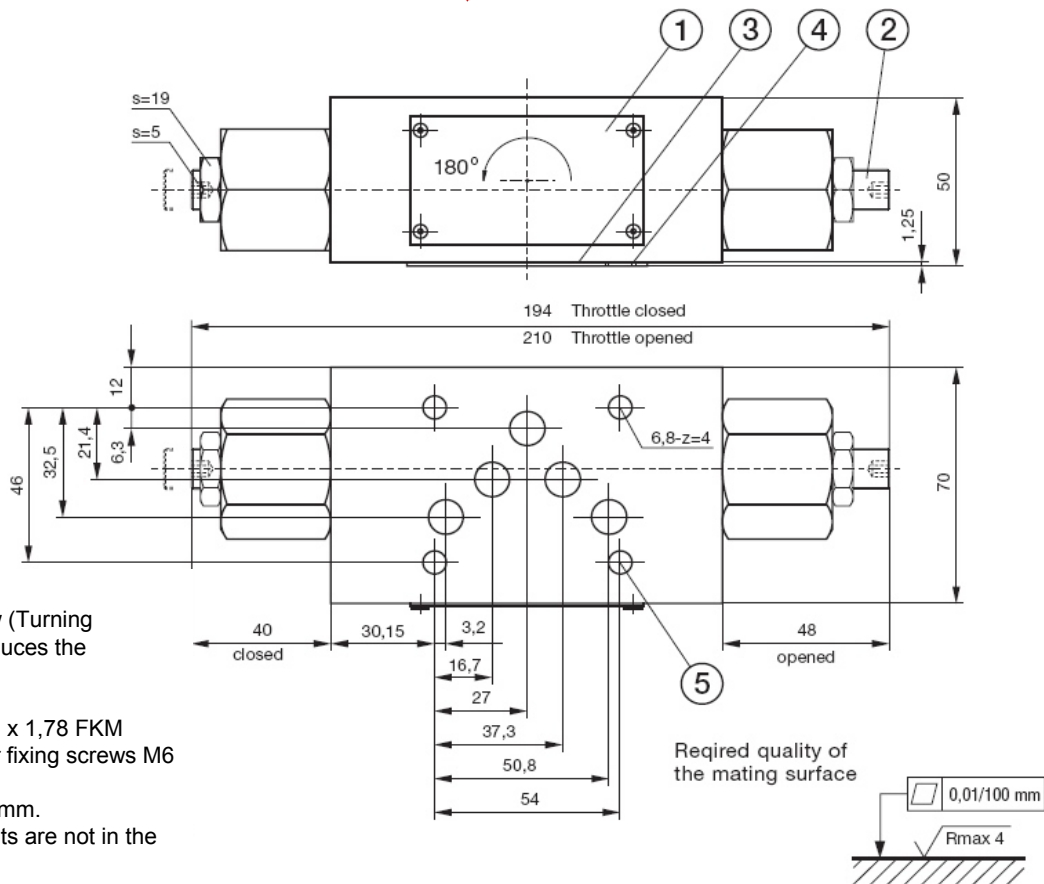
**Name and nominal size** \_\_\_\_\_  
 Flow control valve non return valve  
 Sandwich plate type NW 10

**Series** \_\_\_\_\_  
 01 = Standard, phosphated

**Types** \_\_\_\_\_  
 AAB = 2 Flow control valve non return valve in A and B,  
 downstream throttle  
 ZAB = 2 Flow control valve non return valve in A and B,  
 upstream throttle

**Seal material** \_\_\_\_\_  
 V = FKM (Standard)  
 N = NBR

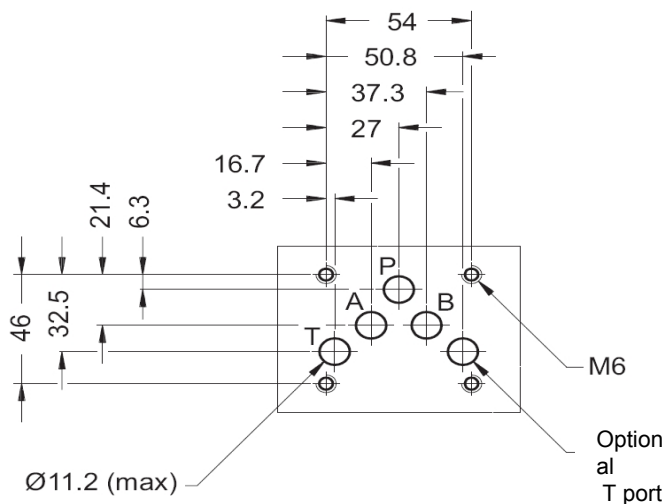
**Dimensions**



- 1 - Type plate
- 2 - Throttle screw (Turning clockwise reduces the Flow rate)
- 3 - O-Ring plate
- 4 - O-Ring 12,42 x 1,78 FKM
- 5 - Bore holes for fixing screws M6

All dimensions in mm.  
 Fastening elements are not in the scope of supply.

**Mounting plate to ISO 4401-05-04-0-94**



**Annotation**  
 The information in this brochure relates to the operating conditions and applications described. For applications or operating conditions not described, please contact the relevant technical department. Subject to technical modifications.

HYDAC Fluidtechnik GmbH  
 Justus-von-Liebig-Str. 5  
 D - 66280 Sulzbach / Saar  
 Tel. 06897 / 509 -01  
 Fax 06897 / 509 -598  
 Email flutec@hydac.com