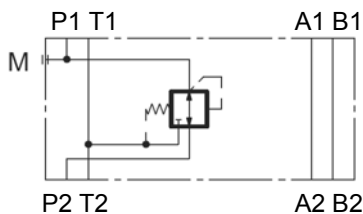




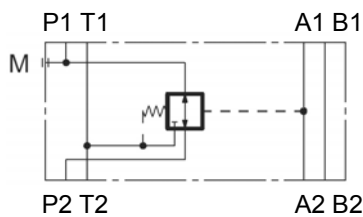
## Pressure Reducing Valve direct acting Sandwich plate type ZW-DM06

**P<sub>max</sub> = 350 bar**  
**Q<sub>max</sub> = 50 l/min**

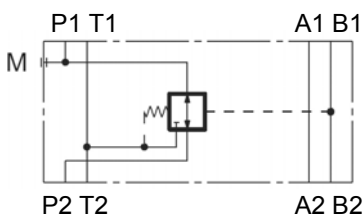
### SYMBOL ZW-DM06 PT



### ZW-DM06 PA

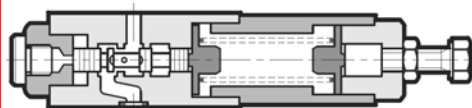


### ZW-DM06 PB

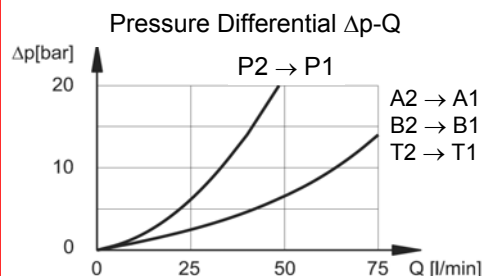


### Function

**P1**



**P2**



### FEATURES

- Hole pattern according to DIN 24340 Form A6, ISO 4401-03, nominal size 06
- Pressure reducing valve sandwich plate type, normally open, with pressure reducing function to the consumer
- easy to assemble under body mounted spool valves according to DIN 24340 Form A6, ISO 4401 (use longer screws)
- type according to ISO 7790
- adjustable by tool

### Types

- type PT: Pressure regulation in line P
- type PA: Pressure regulation in line A (Highest pressure in line B)
- type PB: Pressure regulation in line B (Highest pressure in line A)

### SPECIFICATIONS

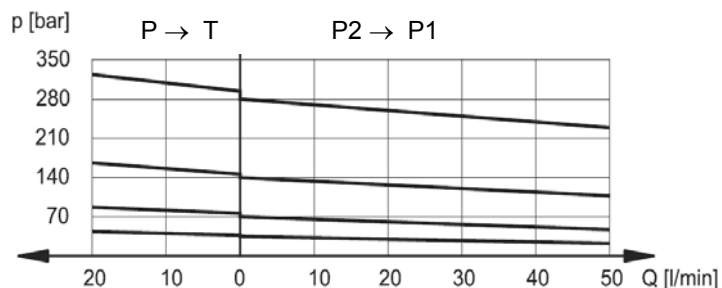
Operating pressure:	max. 350 bar
Pressure ranges:	3 – 35 bar, 10 – 70 bar 30 – 140 bar, 60 – 280 bar
Nominal flow:	max. 50 l/min (in controlled lines) max. 75 l/min (in free lines)
Fluids:	hydraulic oil according to DIN 51524 Part 1 / 2
Media operating temp. range:	-20°C up to max. +80°C
Ambient temperature range:	-20°C up to max. +50°C
Viscosity range:	10 – 400 mm <sup>2</sup> /s is recommended
Filtration:	Class 20/18/15 to ISO 4406 or cleaner

Weight: 1,4 kg incl. valve

### PERFORMANCE

measured at  $v = 32\text{mm}^2/\text{s}$  and  $T_{\text{oil}} = 50^\circ\text{C}$

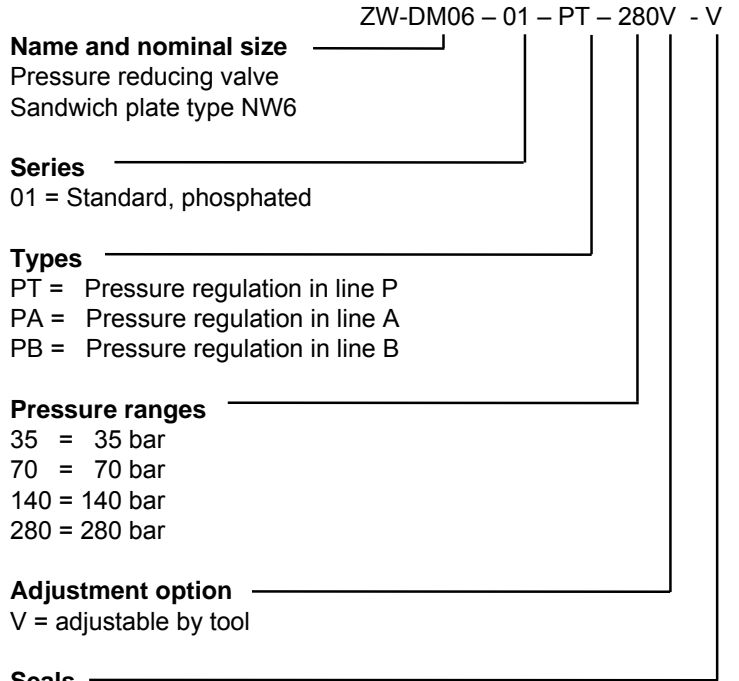
#### Pressure drop $\Delta p$ -Q



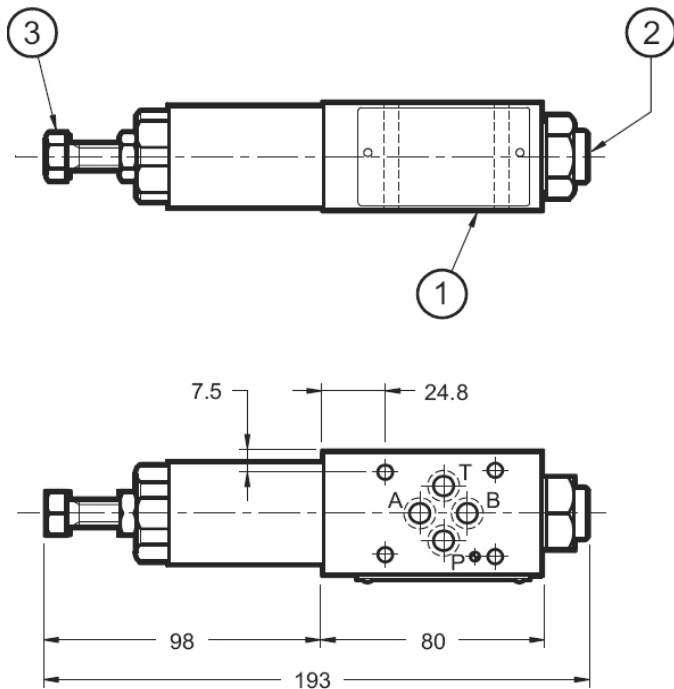
( Index 1 = valve side / Index 2 = sub plate side)

**Standard models**                      **Part No.**  
 ZW-DM06-01-PT 280V- V    6074683  
 ZW-DM06-01-PA 280V- V    6074686  
 ZW-DM06-01-PB 280V- V    6074689  
 Other types on request

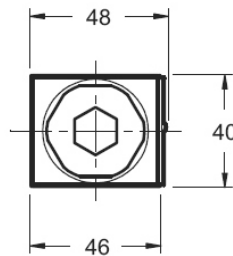
**MODEL CODE**



**Dimensions**



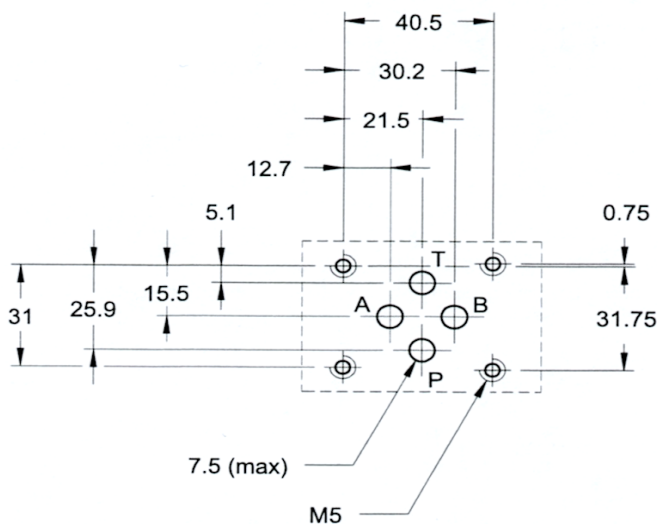
**Seals**  
 V = FKM (Standard)  
 N = NBR



- 1 - O-Ring 9,25 x 1,78-90Sh FKM (4 pcs.)
- 2 - Port for pressure gauge 1/4" BSP
- 3 - Fixing screw, hex size 17

All dimensions in mm.  
 Fixing elements are not in scope of delivery.

**Mounting plate according to ISO 4401-03**



**Annotation**  
 The information in this brochure relates to the operating conditions and applications described. For applications or operating conditions not described, please contact the relevant technical department. Subject to technical modifications.

HYDAC Fluidtechnik GmbH  
 Justus-von-Liebig-Str. 5  
 D - 66280 Sulzbach / Saar  
 Tel. 06897 / 509 -01  
 Fax 06897 / 509 -598  
 Email flutec@hydac.com