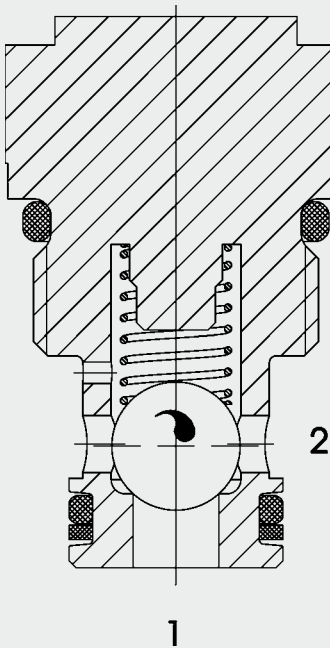




Up to 38 l/min  
Up to 350 bar

## FUNCTION



The check valve RVM06020 is a direct-acting, spring-loaded ball poppet valve. When there is no flow through the valve, the spring holds the ball in the closed position and therefore shuts off port 2 from port 1. The valve opens when the pressure at port 1 is higher than the pressure at port 2, including the pressure created by the spring force.

## Check Valve Ball Seat Type Metric Cartridge – 350 bar RVM06020

### FEATURES

- Main application is to prevent uncontrolled movement or creeping of loaded cylinders and also to shut-off sections of the system
- External surfaces zinc-plated
- Low pressure drop by CFD optimized flow path
- Optional version with hardened and ground seat

### SPECIFICATIONS

Operating pressure:	max. 350 bar
Nominal flow:	max. 38 l/min
Internal leakage:	Leak-free (max. 5 drops $\approx$ 0,25 cm <sup>3</sup> /min at 350 bar)
Cracking pressure:	0.5 bar (others on request)
Ambient temperature range:	min. -30 °C to max. +100 °C
Media operating temperature range:	min. -30 °C to max. +100 °C
Operating fluid:	Hydraulic oil to DIN 51524 Part 1 and 2
Viscosity range:	min. 2.8 mm <sup>2</sup> /s to max. 800 mm <sup>2</sup> /s
Filtration:	Class 21/19/16 according to ISO 4406 or cleaner
MTTF <sub>d</sub> :	150 years (see "Conditions and instructions for valves" in brochure 5.300)
Installation:	No orientation restrictions
Materials:	Valve body: high tensile steel Closing element: hardened and ground steel Seals: NBR (standard) FKM (optional, media temperature range -20 °C to +120 °C) Back-up rings: PTFE
Cavity:	06020
Weight:	0.08 kg

