

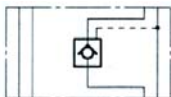


Check Valve pilot to open Sandwich plate type ZW-RP06

up to 350 bar
up to 75 l/min

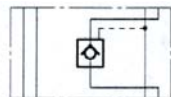
SYMBOL

ZW-RP06 AA
P1 T1 A1 B1



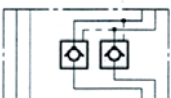
P2 T2 A2 B2

ZW-RP06 AB
P1 T1 A1 B1



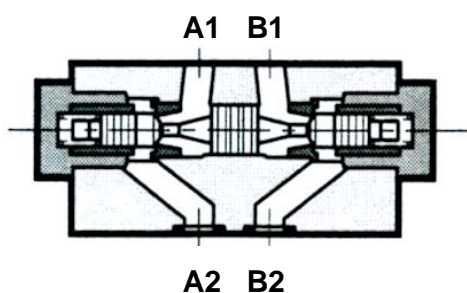
P2 T2 A2 B2

ZW-RP06 AAB
P1 T1 A1 B1



P2 T2 A2 B2

FUNCTION



FEATURES

- Hole pattern according to DIN 24340 Form A6, ISO 4401-03, nominal size 06
- Pilot to open check valve sandwich plate type with check function in one direction, full flow in opposite direction – after unblocking also in the other direction
- easy to assemble under body mounted spool valves according to DIN 24340 Form A6, ISO 4401 (use longer screws)
- type according to ISO 7790
- adjustable by tool

Types

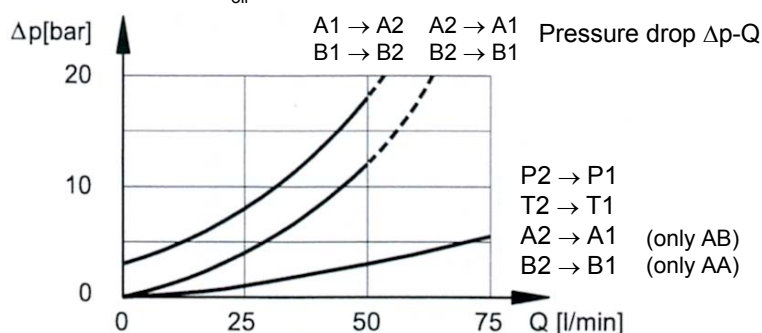
- type AA: Check in line A
- type AB: Check in line B
- type AAB: Check in line A and B

SPECIFICATIONS

| | |
|------------------------------|--|
| Operating pressure: | max. 350 bar |
| Opening pressure: | 3 bar |
| Pilot ratio: | 3,4 : 1 |
| Nominal flow: | max. 50 l/min (in controlled lines) max. 75 l/min (in free lines) |
| Fluids: | hydraulic oil according to DIN 51524 Part 1 and 2 |
| Media operating temp. range: | -20°C up to max. +80°C |
| Ambient temperature range: | -20°C up to max. +50°C |
| Viscosity range: | 10 – 400 mm ² /s is recommended |
| Filtration: | Class 20/18/15 to ISO 4406 or cleaner |
| Weight: | 1,3 kg incl. Valves |

PERFORMANCE

measured at $v = 36 \text{ mm}^2/\text{s}$ and $T_{\text{oil}} = 50^\circ \text{C}$



(Index 1 = valve side / Index 2 = sub plate side)

| Standard models | Part No. |
|------------------------|----------|
| ZW-RP06-01-AA-V | 6074190 |
| ZW-RP06-01-AB-V | 6074191 |
| ZW-RP06-01-AAB-V | 6074192 |
| Other types on request | |

MODEL CODE

ZW-RP06 - 01- AA - V

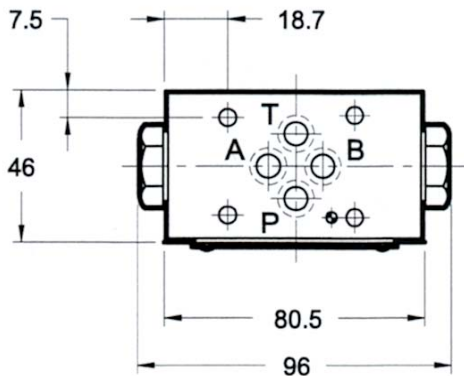
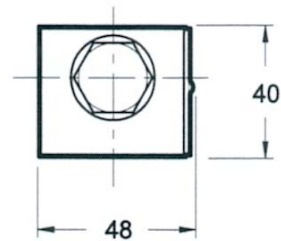
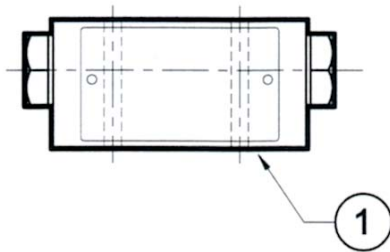
Name and nominal size _____
Pilot to open check valve
Sandwich plate type NW6

Series _____
01 = Standard, phosphated

Types _____
AA = Blocking in line A
AB = Blocking in line B
AAB = Blocking in both lines

Seals _____
V = FKM (Standard)
N = NBR

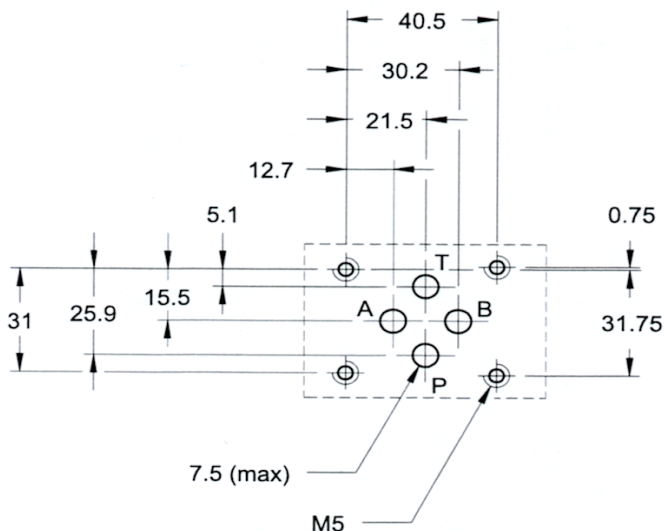
Dimensions



1 - O-Ring 9,25 x 1,78-90Sh FKM (4 pcs.)

All dimensions in mm.
Fixing elements are not in scope of delivery.

Mounting plate according to ISO 4401-03



Annotation
The information in this brochure relates to the operating conditions and applications described. For applications or operating conditions not described, please contact the relevant technical department. Subject to technical modifications.

HYDAC Fluidtechnik GmbH
Justus-von-Liebig-Str. 5
D - 66280 Sulzbach / Saar
Tel. 06897 / 509 -01
Fax 06897 / 509 -598
Email flutec@hydac.com