

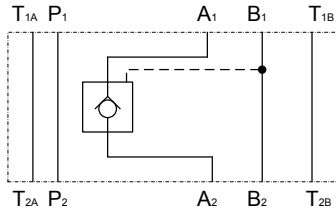


up to 350 bar
up to 100 l/min

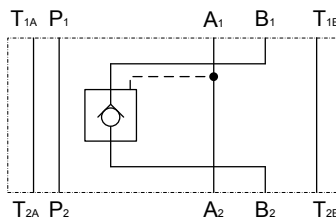
Check Valve pilot to open Sandwich plate type ZW-RP10

SYMBOL

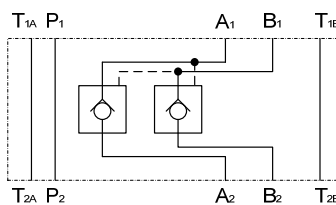
ZW-RP10 AA



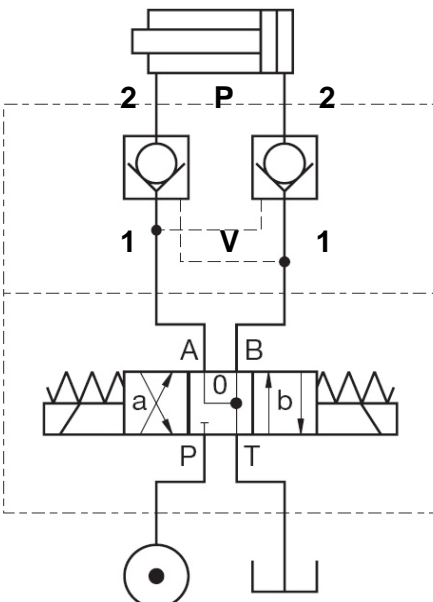
ZW-RP10 AB



ZW-RP10 AAB



Function



FEATURES

- Hole pattern to DIN 24340, ISO 4401, nominal size 10
- Pilot top open check valve sandwich plate type with check function in one direction, free backflow in the opposite direction – to open also in the opposite direction
- easy to assemble under body mounted spool valves to DIN 24340, to ISO 4401 (use longer screws)
- adjustable by tool

Types

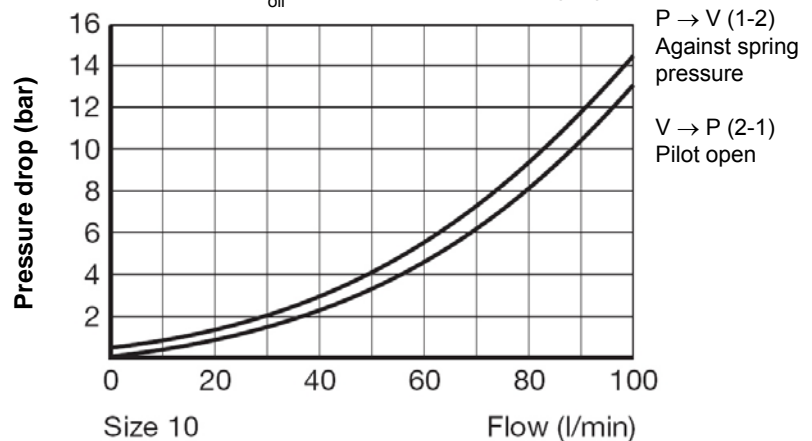
- type AA: check in line A
- type AB: check in line B
- type AAB: check in line A and B

SPECIFICATIONS

Nominal pressure:	max. 350 bar
Ratio:	3,6 : 1
Cracking pressure:	0,5 bar
Nominal flow:	max. 100 l/min
Fluids:	Hydraulic fluid to DIN 51524 part 1 and 2
Media operating temp. range:	-20°C up to max. +70°C
Ambient temperature range:	-20°C up to max. +50°C
Viscosity range:	15 – 380 mm ² /s is recommended
Filtration:	Class 20/18/15 to ISO 4406 or cleaner
	ISO 4410 Class 20/18/15 to ISO 4406
Weight:	3,5 kg incl. valve

PERFORMANCE

measured at $v = 32 \text{ mm}^2/\text{s}$ and $T_{\text{oil}} = 50^\circ \text{ C}$ Pressure drop $\Delta p-Q$



Standard models
 ZW-RP10-01-AA-V
 ZW-RP10-01-AB-V
 ZW-RP10-01-AAB-V
 other types on request

Part No.
 6078912
 6078913
 6078914

MODEL CODE

ZW-RP10 - 01- AA - V

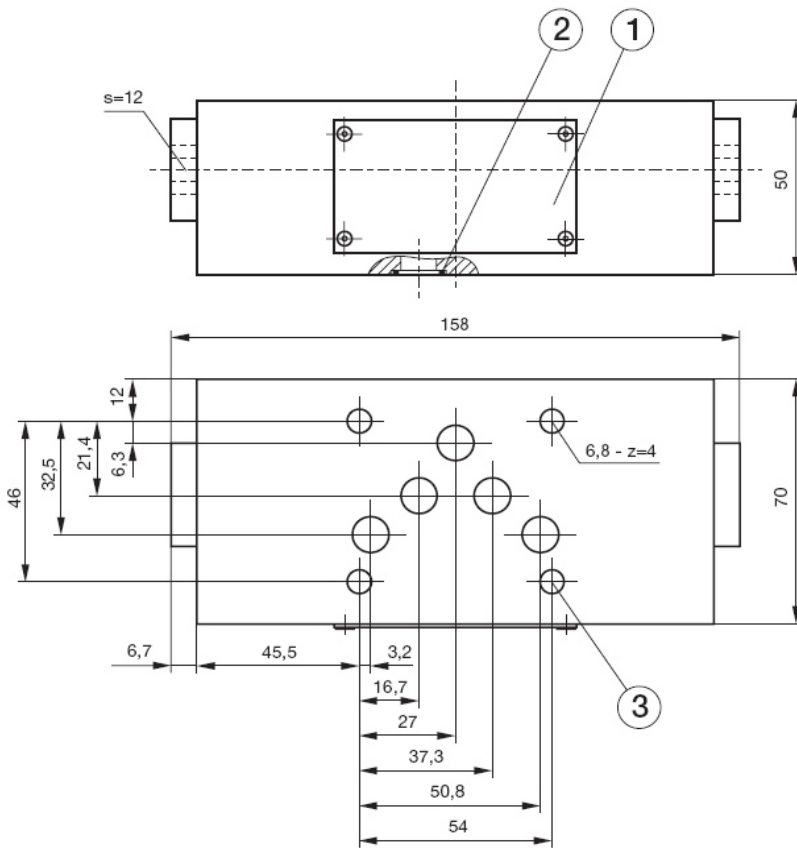
Name and nominal size
 Pilot to open check valve
 Sandwich plate type NW10

Series
 01 = Standard, phosphated

Type
 AA = check in line A
 AB = check in line B
 AAB = check in both lines

Seal material
 V = FKM (Standard)
 N = NBR

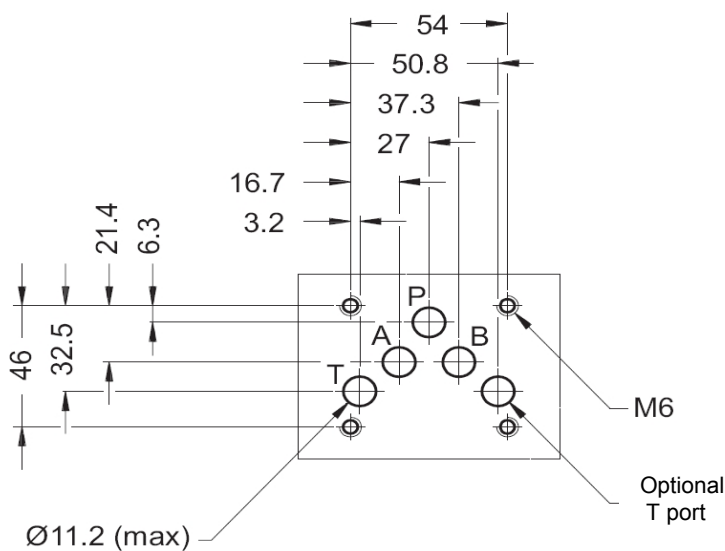
Dimensions



- 1 - Type plate
- 2 - O-Ring 12,42 x 1,78 FKM
- 3 - Bore holes for fixing screws M6

All dimensions in mm.
 Fastening elements are not in the scope of supply.

Mounting plate to ISO 4401-05-04-0-94



Annotation
 The information in this brochure relates to the operating conditions and applications described. For applications or operating conditions not described, please contact the relevant technical department. Subject to technical modifications.

HYDAC Fluidtechnik GmbH
 Justus-von-Liebig-Str. 5
 D - 66280 Sulzbach / Saar
 Tel. 06897 / 509 -01
 Fax 06897 / 509 -598
 Email flutec@hydac.com