

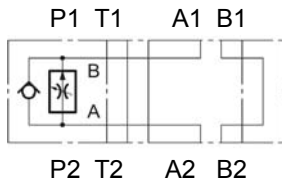


## Flow Regulator pressure-compensated, with reverse flow check Sandwich plate type ZW-2SR10

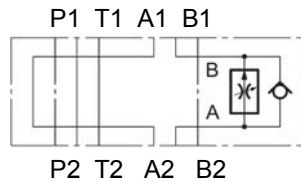
up to 250 bar  
up to 30 l/min

### SYMBOL

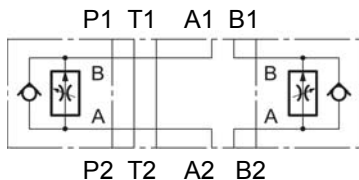
#### ZW-2SR10 AA



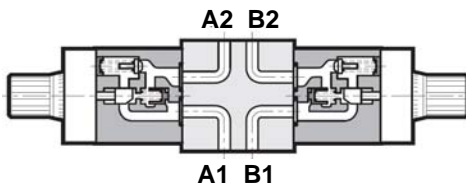
#### ZW-2SR10 AB



#### ZW-2SR10 AAB



### Function



### FEATURES

- Hole pattern to DIN 24340 Form A10, ISO 4401-05, nominal size 10
- Adjustable flow regulator pressure-compensated sandwich plate type for the flow control in one direction and free backflow in the opposite direction
- easy to assemble under body mounted spool valves to DIN 24340 Form A10, to ISO 4401-05 (use longer screws)
- adjustable by turning knob

### TYPES

- type AA: Flow control function from A2 to A1
- type AB: Flow control function from B2 to B1
- type AAB: Flow control function from A2 to A1 and B2 to B1

### SPECIFICATIONS

Nominal pressure:

max. 250 bar

Nominal flow:

max. 100 l/min in free lines  
max. 1 /4 /10 /16 /22 /30 l/min in controlled lines

max. 40 l/min in opposite direction

Hydraulic fluid to DIN 51524 part 1 and 2

Fluids:

Media operating temp. range:

-20°C up to max. +80°C

Ambient temperature range:

-20°C up to max. +50°C

Viscosity range:

10 – 400 mm<sup>2</sup>/s is recommended

Filtration:

Class 20/18/15 to ISO 4406 or cleaner

Weight:

4,3 kg incl. valve (AAB = 5,6 kg)

### PERFORMANCE

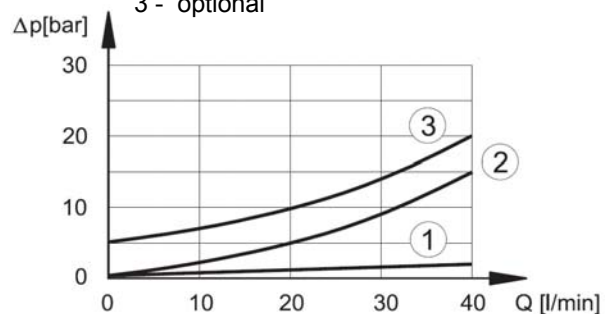
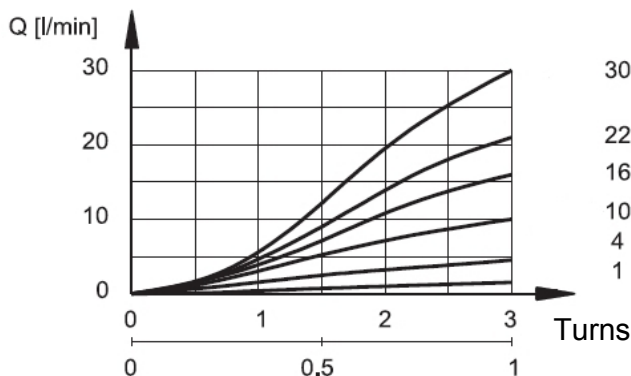
measured at  $v = 32\text{mm}^2/\text{s}$  and  $T_{\text{oil}} = 50^\circ\text{C}$

Pressure drop  $dP / Q$

1 - Pressure drop free lines

2 - Pressure drop through check valve

3 - optional



(Index 1 = device side) (Index 2 = plate side)

### Standard models

Standard models	Part No.
ZW-2SR10-01- AA -01- V	3535364
ZW-2SR10-01- AA -04- V	3535377
ZW-2SR10-01- AA -10- V	3535380
ZW-2SR10-01- AA -16- V	3535383
ZW-2SR10-01- AA -22- V	3535405
ZW-2SR10-01- AA -30- V	3535406
ZW-2SR10-01- AAB -01- V	3535421
ZW-2SR10-01- AAB -04- V	3535422
ZW-2SR10-01- AAB -10- V	3535424
ZW-2SR10-01- AAB -16- V	3535445
ZW-2SR10-01- AAB -22- V	3535446
ZW-2SR10-01- AAB -30- V	3535447
ZW-2SR10-01- AB -01- V	3535407
ZW-2SR10-01- AB -04- V	3535408
ZW-2SR10-01- AB -10- V	3535412
ZW-2SR10-01- AB -16- V	3535413
ZW-2SR10-01- AB -22- V	3535414
ZW-2SR10-01- AB -30- V	3535416
other types on request	

### MODEL CODE

ZW -2SR10 -01 - AB -10 - V

#### Name and nominal size

Flow control valve  
Sandwich plate type

#### Type

01 = Standard, phosphated

#### Function

AA: Flow control function from A2 to A1  
AB: Flow control function from B2 to B1  
AAB: Flow control function from A2 to A1 and B2 to B1

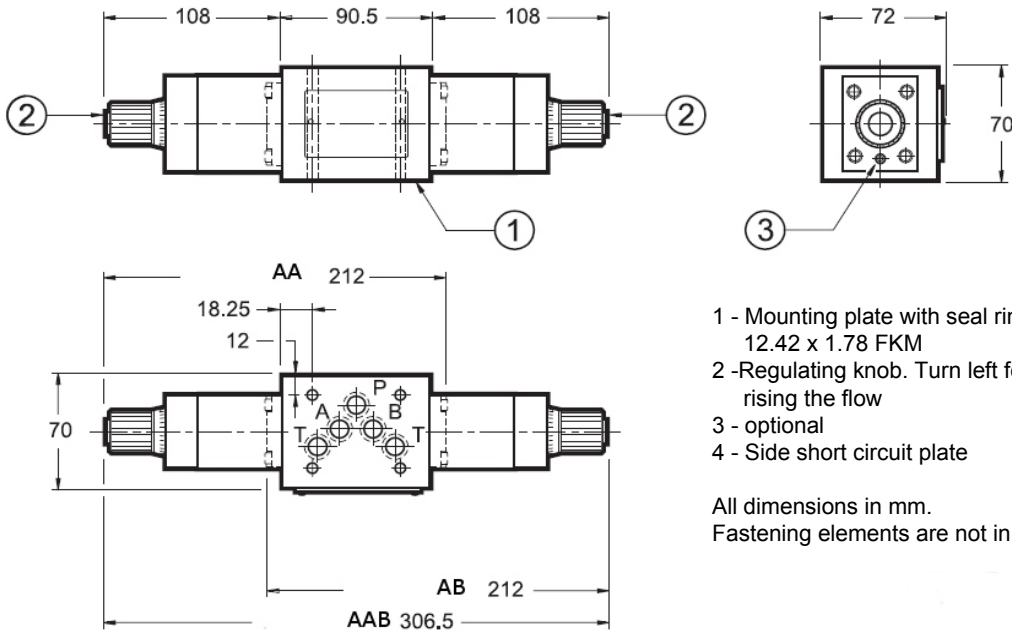
#### Flow ranges

01 = 1 l/min  
04 = 4 l/min  
10 = 10 l/min  
16 = 16 l/min  
22 = 22 l/min  
30 = 30 l/min

#### Seal material

V = FKM (Standard)  
N = NBR

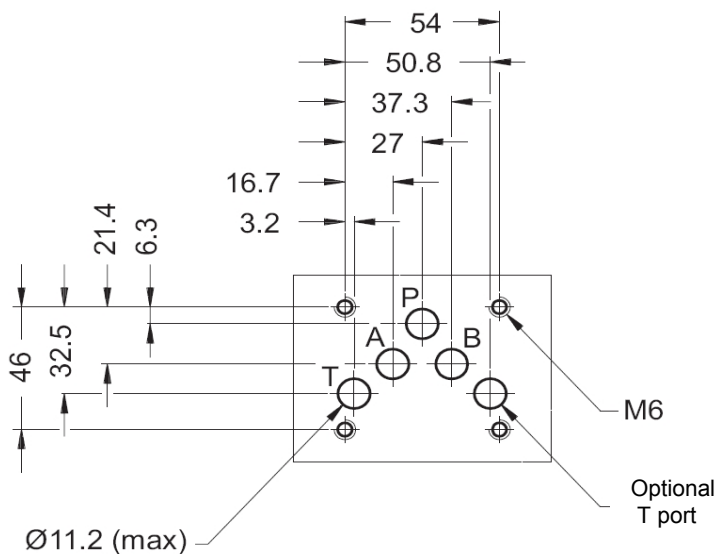
### Dimensions



- 1 - Mounting plate with seal ring:  
12.42 x 1.78 FKM
- 2 -Regulating knob. Turn left for  
rising the flow
- 3 - optional
- 4 - Side short circuit plate

All dimensions in mm.  
Fastening elements are not in the scope of supply.

### Mounting plate to ISO 4401-05-04-0-94



Annotation  
The information in this brochure  
relates to the operating conditions  
and applications described.  
For applications or operating  
conditions not described, please  
contact the relevant technical  
department.  
Subject to technical modifications.

HYDAC Fluidtechnik GmbH  
Justus-von-Liebig-Str. 5  
D - 66280 Sulzbach / Saar  
Tel. 06897 / 509 -01  
Fax 06897 / 509 -598  
Email flutec@hydac.com