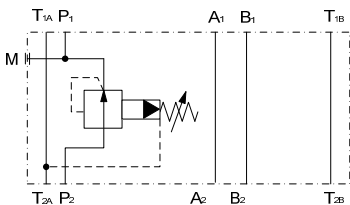




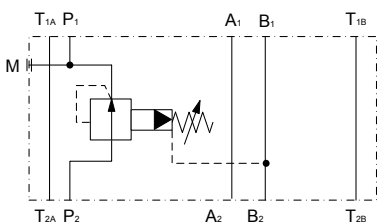
Pressure Reducing Valve pilot operated Sandwich plate type ZW-DM10

up to 320 bar
up to 100 l/min

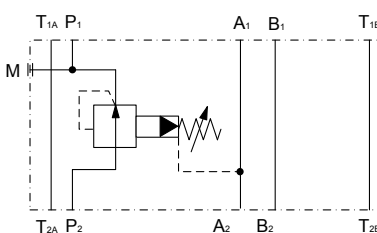
SYMBOL ZW-DM10 PT



ZW-DM10 PA

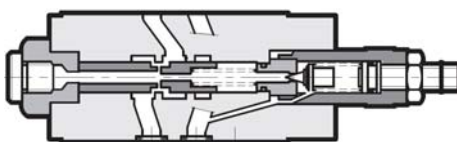


ZW-DM10 PB

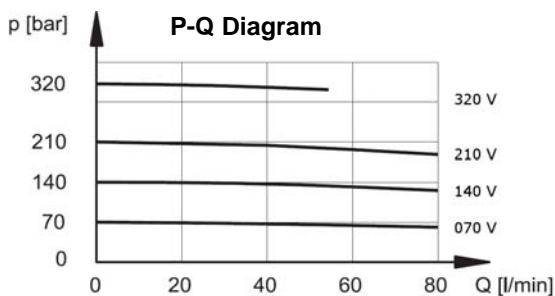


Function

P1 T1



P2 T2



FEATURES

- Hole pattern to DIN 24340 Form A10, ISO 4401-05, nominal size 10
- pressure reducing valve sandwich plate type, normal open, with pressure reducing function to the consumer
- easy to assemble under body mounted spool valves to DIN 24340 Form A10, to ISO 4401-05 (use longer screws)
- adjustable by tool

Types

- type PT: Pressure reducing in line P
- type PA: Pressure reducing in line A (Highest pressure in line B)
- type PB: Pressure reducing in line B (Highest pressure in line A)

SPECIFICATIONS

Nominal pressure:

max. 320 bar

Pressure ranges:

5 – 70 bar, 8 – 140 bar,

10 – 210 bar, 15 – 320 bar

Nominal flow:

max. 80 l/min (in controlled lines)

max. 100 l/min (in free lines)

Fluids:

Hydraulic fluid to DIN 51524 part 1 and 2

Media operating temp. range:

-20°C up to max. +80°C

Ambient temperature range:

-20°C up to max. +50°C

Viscosity range:

10 – 400 mm²/s is recommended

Filtration:

Class 20/18/15 to ISO 4406

or cleaner

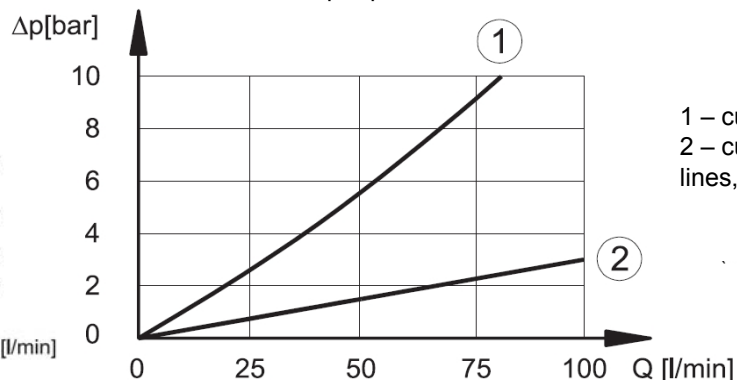
Weight:

2,7 kg incl. valve

PERFORMANCE

measured at $v = 32\text{mm}^2/\text{s}$ and $T_{\text{oil}} = 50^\circ\text{C}$

Pressure drop Δp -Q



1 – curve P2 → P1
2 – curve for free lines, e.g. A → A1

Standard models	Part No.
ZW-DM10-01-PA 70V- V	3504888
ZW-DM10-01-PA 140V- V	3504889
ZW-DM10-01-PA 210V- V	3504890
ZW-DM10-01-PA 320V- V	3504891

ZW-DM10-01-PB 70V- V	3504892
ZW-DM10-01-PB 140 V- V	3504893
ZW-DM10-01-PB 210V- V	3504894
ZW-DM10-01-PB 320V- V	3504896

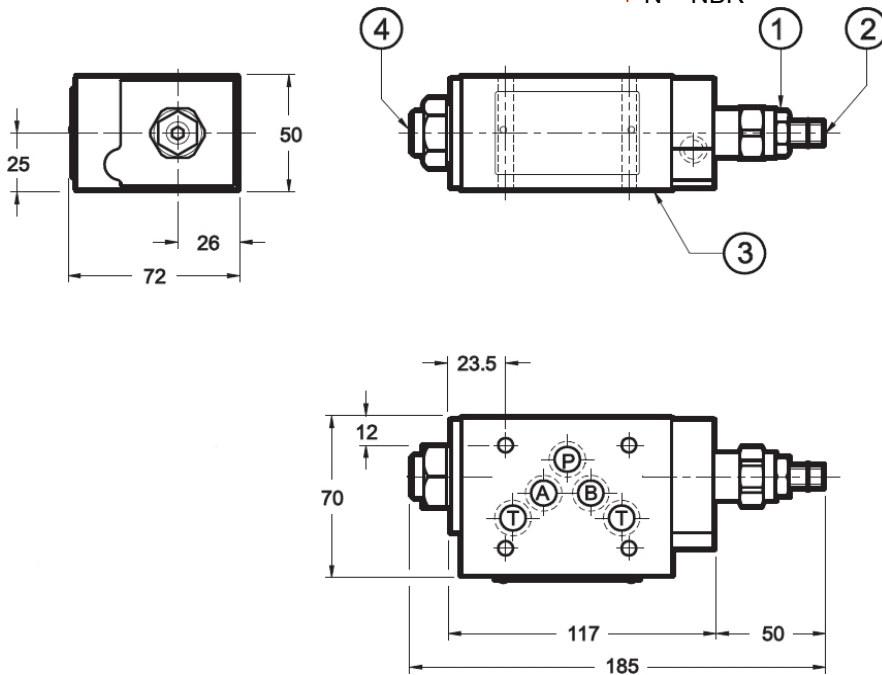
ZW-DM10-01-PT 70V- V	3504864
ZW-DM10-01-PT 140V- V	3504885
ZW-DM10-01-PT 210V- V	3504886
ZW-DM10-01-PT 320V- V	3504887

other types on request

MODEL CODE

Name and nominal size	ZW-DM10 - 01 - PT - 070 V - V
Pressure reducing valve	
Sandwich plate type	
Series	01 = Standard, phosphated
Type	PT = Pressure reducing in line P PA = Pressure reducing in line A PB = Pressure reducing in line B
Pressure ranges	70 = 5 - 70 bar 140 = 8 - 140 bar 210 = 10 - 210 bar 320 = 15 - 320 bar
Adjustment option	V = adjustable by tool
Seal material	V = FKM (Standard) N = NBR

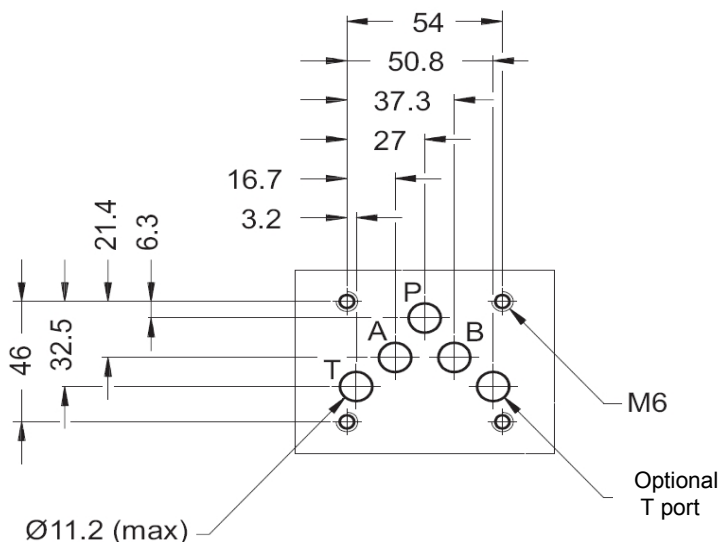
Dimensions



- 1 - Fastening nut hex size 17
- 2 - Allen tool size 5
By Turning clockwise the flow is rising.
- 3 - Mounting plate with seal ring:
12.42 x 1.78 FKM
- 4 - Pressure gauge connection 1/4" BSP.

All dimensions in mm.
Fastening elements are not in the scope of supply.

Mounting plate to ISO 4401-05-04-0-94



Annotation
The information in this brochure relates to the operating conditions and applications described. For applications or operating conditions not described, please contact the relevant technical department. Subject to technical modifications.

HYDAC Fluidtechnik GmbH
Justus-von-Liebig-Str. 5
D - 66280 Sulzbach / Saar
Tel. 06897 / 509 -01
Fax 06897 / 509 -598
Email flutec@hydac.com