

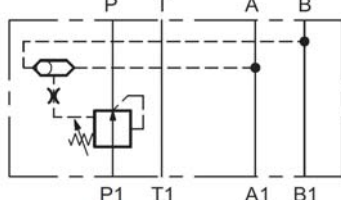


Pressure Compensator direct acting Sandwich plate type ZW-DW06

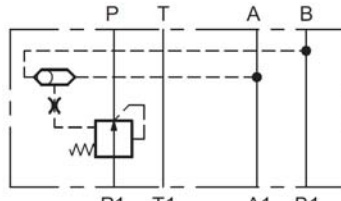
up to 350 bar
up to 40 l/min

SYMBOL

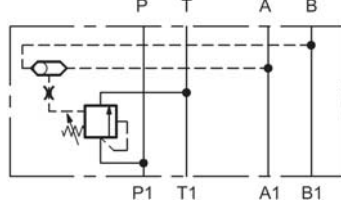
PAB 33V



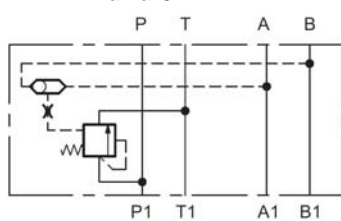
PAB 4 und 8



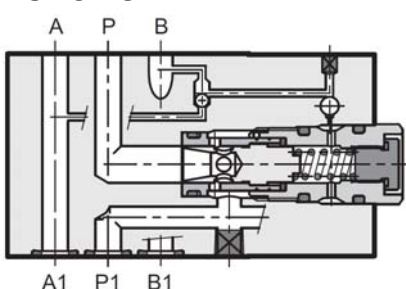
PTAB 33V



PTAB 4 und 8



FUNCTION



FEATURES

- Hole pattern according to DIN 24340 Form A6, ISO 4401-03, NW 06
- 2-way upstream pressure compensator or 3-way pressure compensator sandwich plate type
- keeping the pressure differential between port P and ports A and B constant
- combination in general with proportional directional valves to achieve a flow regulation independent of pressure changes
- a built-in change-over valve controls the choice of the control pressure in line A and B
- three versions available: $\Delta p = 4$ bar, $\Delta p = 8$ bar and adjustable $\Delta p = 7-33$ bar
- easy to assemble under body mounted spool valves according to DIN 4401

Types

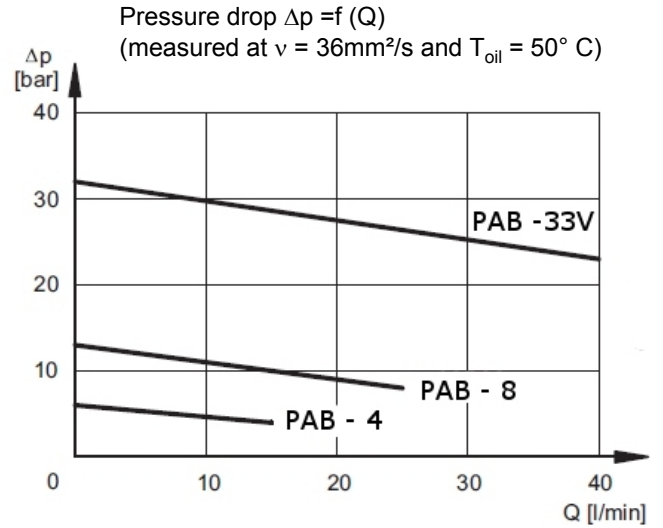
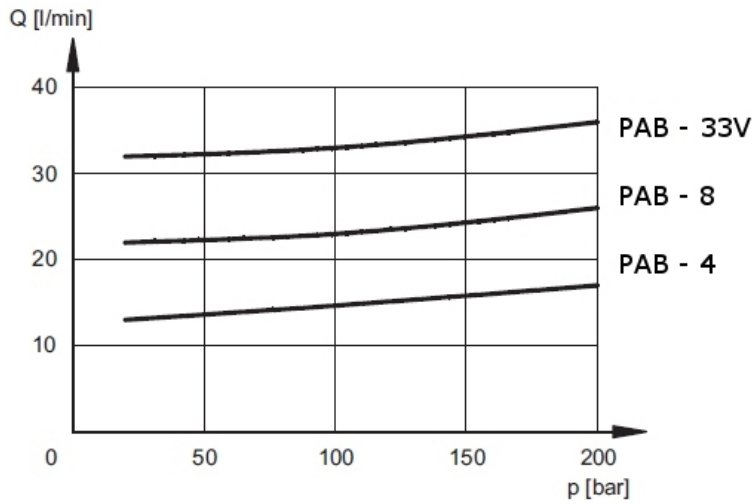
- Type PAB:
 - 2- way, adjustable
 - 2- way, fixed
- Type PTAB:
 - 3- way, adjustable
 - 3- way, fixed

SPECIFICATIONS

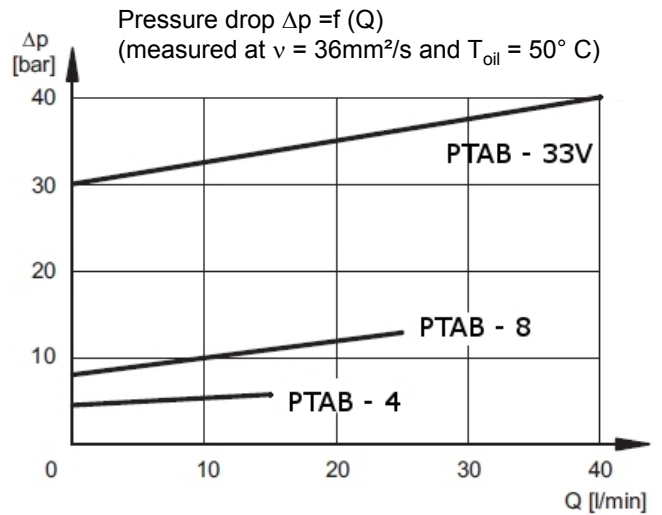
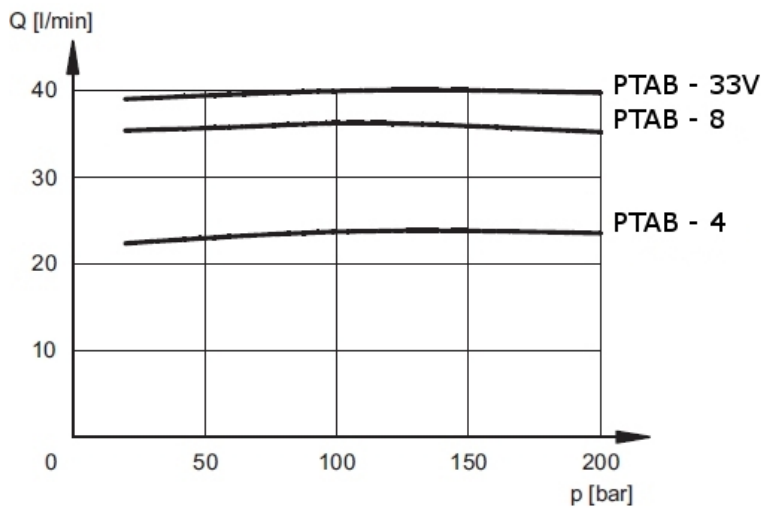
- Operating pressure: max. 350 bar
- Pressure differential: $\Delta p = 4$ bar, $\Delta p = 8$ bar (fixed)
 $\Delta p = 7-33$ bar adjustable
- Flow rate: max. 40 l/min
- Hydraulic fluids: Hydraulic oil according to DIN 51524 Part 1 and 2
- Media operating temp. range: -20°C up to max. $+80^{\circ}\text{C}$
- Ambient temperature range: -20°C up to max. $+50^{\circ}\text{C}$
- Viscosity range: 10 – 400 mm²/s is recommended
- Filtration: Class 20/18/15 to ISO 4406 or cleaner
- Weight: 1,5 kg incl. valves

PERFORMANCE

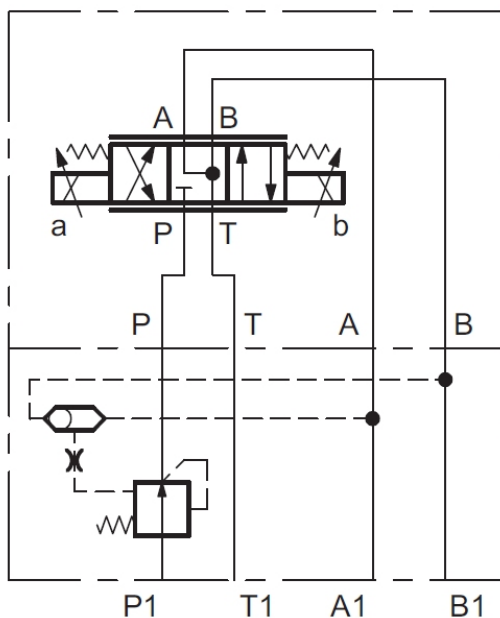
2-way Pressure compensator upstream



3-way Pressure compensator



Application example with proportional directional valve (flow control)



Standard Models **Mat.-Nr.**
Types on request

MODEL CODE

ZW-DW06 – 01 – PAB – 4 – V

Name _____
Pressure Compensator
sandwich plate type NG6

Model range _____
01 = Standard

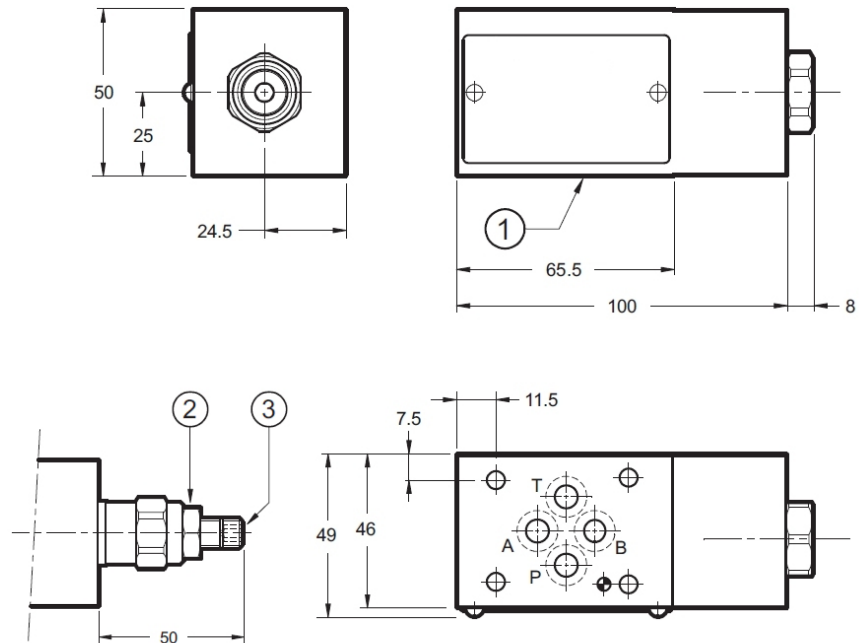
Types _____
PAB = 2-way upstream-Pressure Compensator
PTAB = 3-Wege Pressure Compensator

Pressure differential _____
4 = 4 bar
8 = 8 bar
33V = 7 - 33 bar adjustable

Seal material _____
V = FPM (Standard)
N = NBR

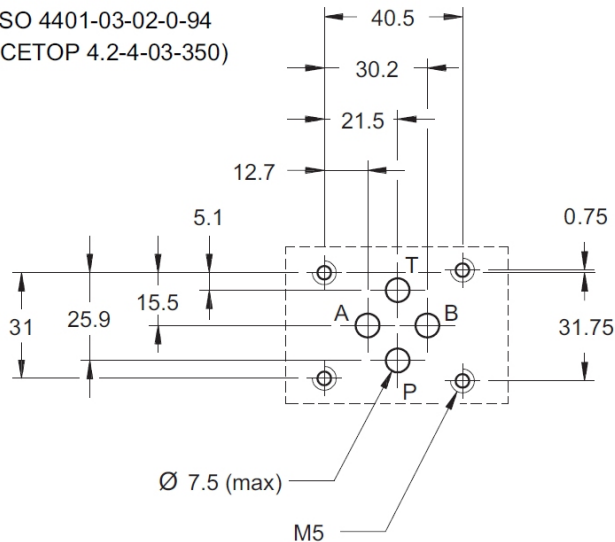
DIMENSIONS

- 1) Mounting plate with O-ring
4x 9.25 x 1.78 90 Shore
- 2) Fixing nut: SW 17
- 3) Hex: SW 5
By turning clockwise pressure raise



Mounting plate according to ISO 4401-03

ISO 4401-03-02-0-94
(CETOP 4.2-4-03-350)



Annotation
The information in this brochure relates to the operating conditions and applications described. For applications or operating conditions not described, please contact the relevant technical department. Subject to technical modifications.

HYDAC Fluidtechnik GmbH
Justus-von-Liebig-Str. 5
66280 Sulzbach / Saar
Tel.: 06897 / 509 -0
Fax: 06897 / 509 -598
Email: flutec@hydac.com

