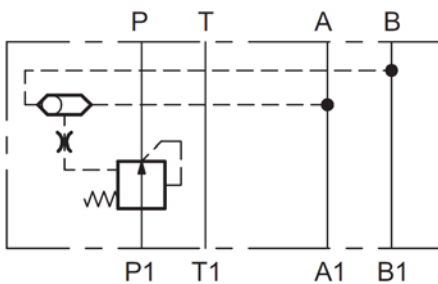




## Pressure Compensator direct acting Sandwich plate type ZW-DW10

up to 320 bar  
up to 100 l/min

### SYMBOL



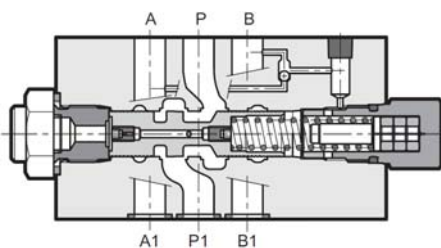
### FEATURES

- Hole pattern according to DIN 24340 Form A10, ISO 4401-05, NW 10
- 2-way upstream pressure compensator sandwich plate type
- keeping the pressure differential between port P and ports A and B constant
- combination in general with proportional directional valve to achieve a flow regulation independent of pressure changes
- a built-in change-over valve controls the choice of the control pressure in line A and B
- two versions available:  $\Delta p = 4$  bar,  $\Delta p = 8$  bar
- easy to assemble under body mounted spool valves to DIN 24340, to ISO 4401 (use longer screws)

### Types

- Type PAB: 2-way

### Function



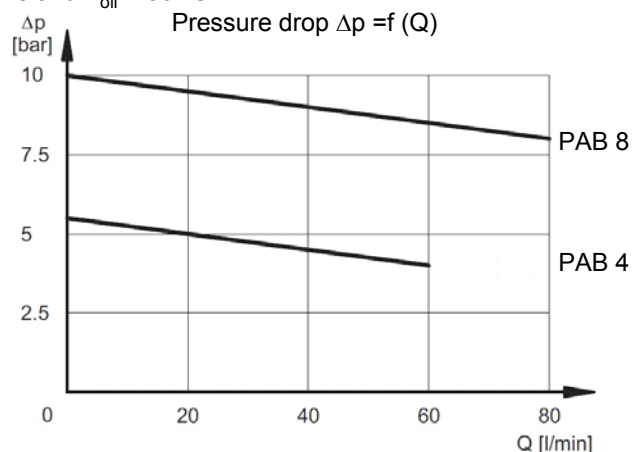
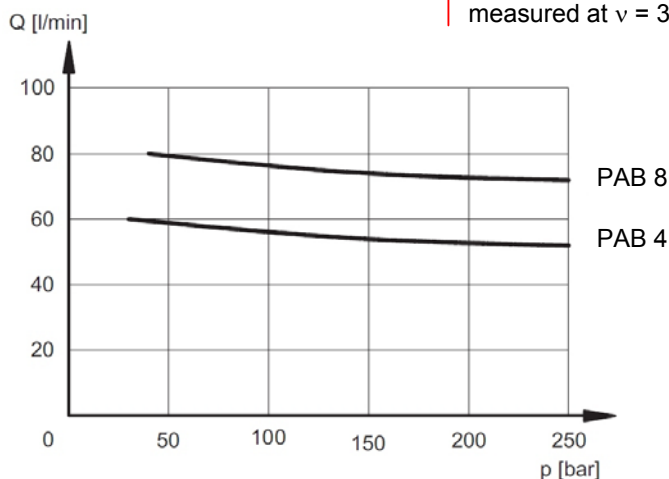
### SPECIFICATIONS

- Operating pressure: max. 320 bar
- Pressure differential:  $\Delta p = 4$  bar,  $\Delta p = 8$  bar (fixed)
- Flow rate: max. 100 l/min
- Hydraulic fluids: Hydraulic oil according to DIN 51524 Part 1 and 2
- Media operating temp. range:  $-20^{\circ}\text{C}$  up to max.  $+80^{\circ}\text{C}$
- Ambient temperature range:  $-20^{\circ}\text{C}$  up to max.  $+50^{\circ}\text{C}$
- Viscosity range: 10 – 400 mm<sup>2</sup>/s is recommended
- Filtration: Class 20/18/15 to ISO 4406 or cleaner

Weight: 2,7 kg incl. valves

### PERFORMANCE

measured at  $v = 32\text{mm}^2/\text{s}$  and  $T_{\text{oil}} = 50^{\circ}\text{C}$



## Standard Models

Types on request

Mat.-Nr.

## MODEL CODE

ZW-DW10-01-PAB-4-V

**Name** \_\_\_\_\_  
 Pressure Compensator  
 sandwich plate type NG6

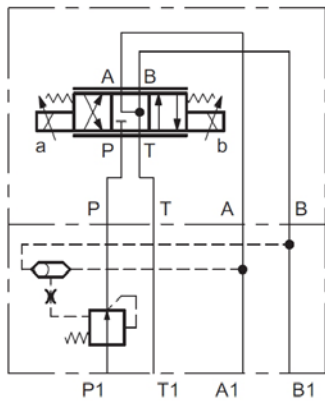
**Model range** \_\_\_\_\_  
 01 = Standard

**Types** \_\_\_\_\_  
 PAB = 2-way upstream-Pressure Compensator

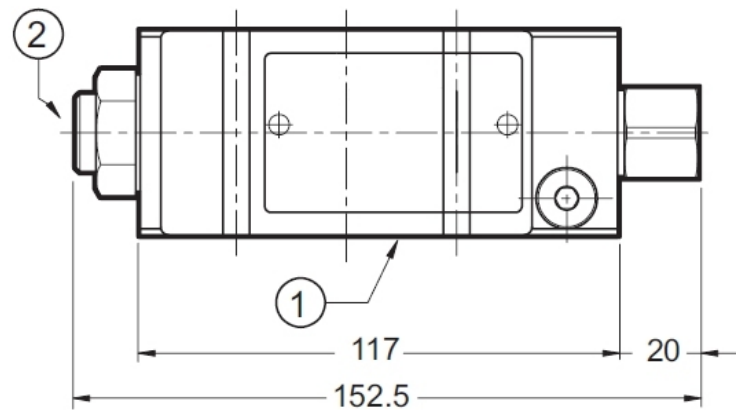
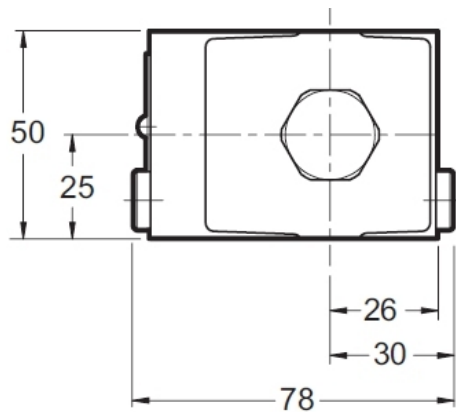
**Pressure differential** \_\_\_\_\_  
 4 = 4 bar fixed  
 8 = 8 bar “

**Seal material** \_\_\_\_\_  
 V = FPM (Standard)  
 N = NBR

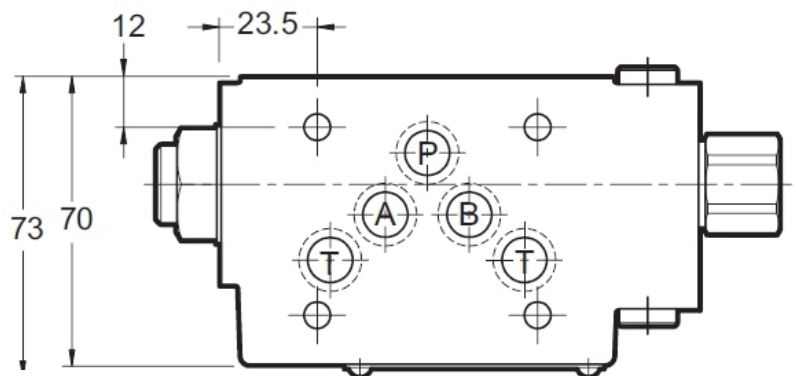
## Application example with proportional directional valve (flow control)



## DIMENSIONS

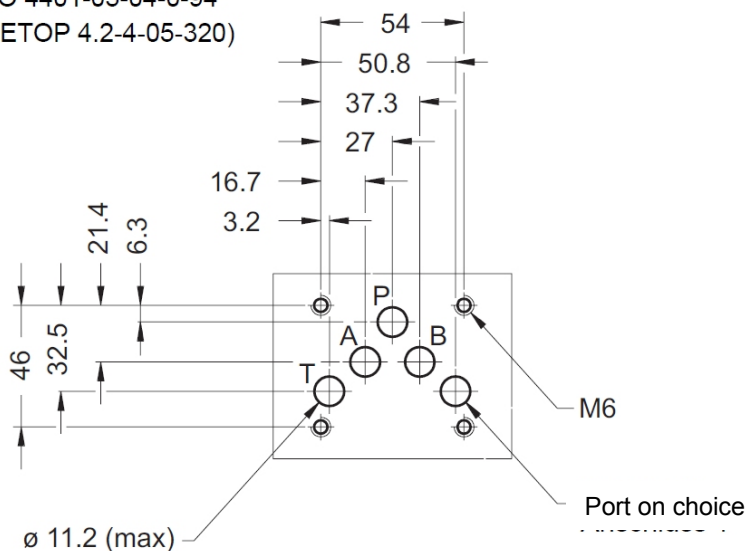


- 1 - Mounting plate with O-ring  
 5x 12,42 x 1.78 90 Shore
- 2 - Gauge connection 1/4" BSP



## Mounting plate according to ISO 4401-05

ISO 4401-05-04-0-94  
 (CETOP 4.2-4-05-320)



**Annotation**  
 The information in this brochure relates to the operating conditions and applications described. For applications or operating conditions not described, please contact the relevant technical department. Subject to technical modifications.

HYDAC Fluidtechnik GmbH  
 Justus-von-Liebig-Str. 5  
 66280 Sulzbach / Saar  
 Tel.: 06897 / 509-0  
 Fax: 06897 / 509-598  
 Email: flutec@hydac.com