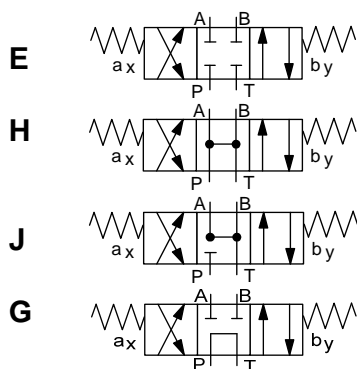




4/3-Directional control valve

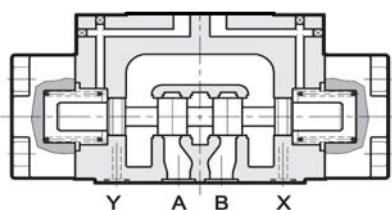
Hydraulically operated
Optional with diversion plate,
or pilot valve
4WH E 25

SYMBOL



up to 320 bar
up to 600 l/min

FUNCTION



FEATURES

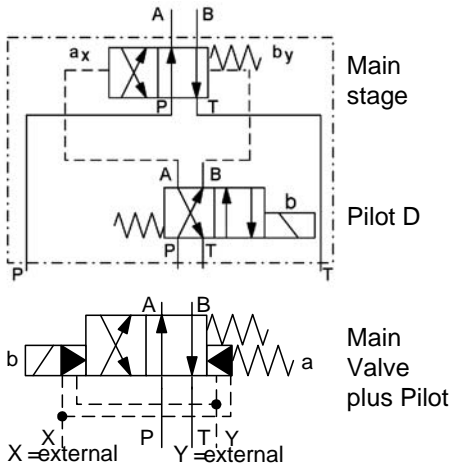
- Pattern according ISO 4401
- Hydraulically operated directional valve
- Electro-hydraulically operated with pilot valve NW6 or hydraulically operated with diversion plate
- Flow up to 600l/min
- Internal or external ported pilot supply and drain line selectable by internal plug setting
- Attention: Pilot valve, diversion plate and fixing screws are not in the scope of delivery

SPECIFICATIONS

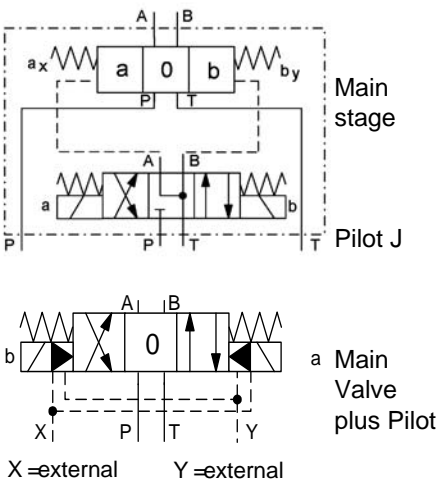
Operating pressure:	max. 320 bar
Symbols E, H, J	max. 600 l/min at 210 bar (500 l/min at 320 bar)
Symbol G:	max. 500 l/min at 210 bar (450 l/min at 320 bar)
Pilot pressure:	min. 5 up to max. 210 bar
Pressure on T line: (with internal drain)	max. 140 bar
Pressure on T line: (with external drain)	max. 250 bar
Fluids:	Hydraulic oil according to DIN 51524 part 1 and 2
Media operating temp. range:	-20°C up to max. +80°C
Ambient temp. range:	-20°C up to max. +50°C
Viscosity range:	10 – 400 mm ² /s is recommended
Filtration:	Class 20/18/15 according to ISO 4406
Weight:	13,6 kg without pilot valve and short-circuit subplate

Example for assembled pilot valve

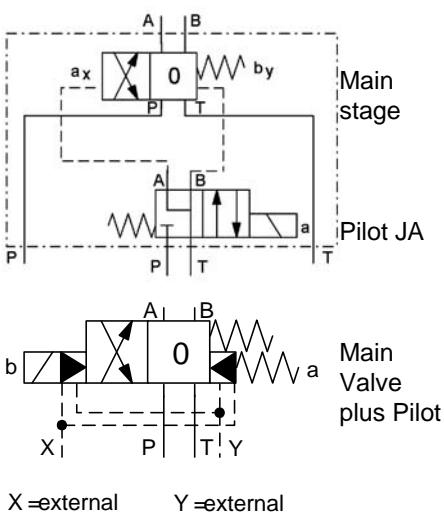
4/2 directional valve with spring offset Type 4WEH 25, 32



4/3 directional valve spring centered Type 4WEH 25, 32

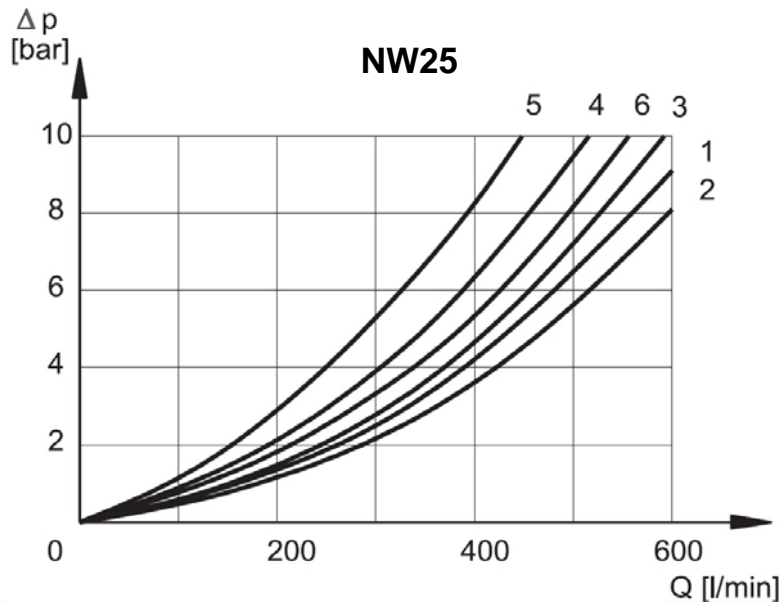


4/2 directional valve with spring offset Type 4WEH 25, 32



PERFORMANCE

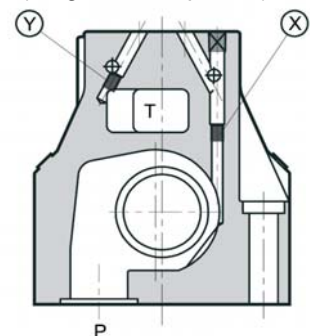
Measured at $v = 33 \text{ mm}^2/\text{s}$ and $T_{oil} = 46^\circ \text{ C}$



Piston	Piston position	* AB blocked	● B blocked	○ A blocked	Connections	
		P → A	P → B	A → T	B → T	P → T
Diagram curves						
Symbol E	Actuated	1	1	2	3	
Symbol H	not actuated					6*
Symbol H	Actuated	2	2	1	2	
Symbol J	not actuated			4●	4○	
Symbol J	Actuated	1	1	1	2	
Symbol G	not actuated					5
Symbol G	Actuated	6	6	3	4	

Valve type	Plug setting	
	X	Y
Internal pilot supply and external drain	no plug	plug
I Internal pilot supply and drain	no plug	no plug
external pilot supply and drain	plug	plug
EI external pilot supply and internal drain	plug	no plug

Sectional view (Plugs M6 x 8 placed)



Standard models

4WH E 25 E S01 /V
 4WH E 25 H S01 /V
 4WH E 25 J S01 /V
 4WH E 25 G S01 /V
 Other models on request

Part-no.

6079051
 3641081
 6079052
 6041083

MODEL CODE

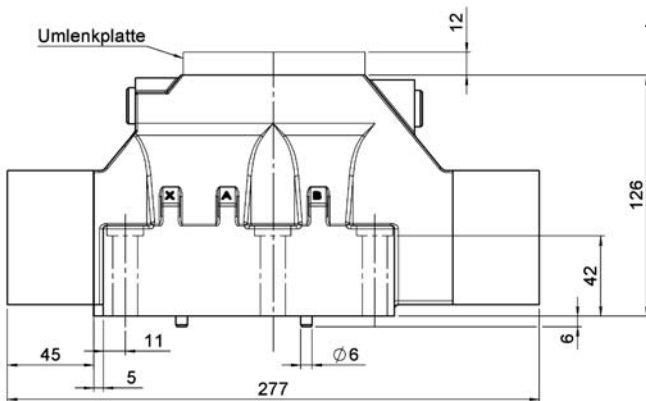
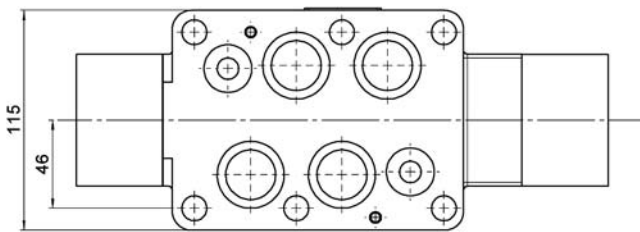
	4WH E	25	E	S01	/ V	/ U
Name	4/3-directional control valve					
Pilot supply and drain	E = Control fluid inlet and outlet external					
Nominal size	25 = NW 25					
Symbol for main stage	Available Symbols: E, J, G, H					
Type	S01 = Standard					
Seals	V = FKM (Standard) N = NBR					
Option	U = with diversion plate PATB and Mounting screws Omission = without diversion plate (Standard)					

Diversion plates (see accessory equipment)

UP-6-PATB-S01/1/V 3581661
 UP-6-PBTA-S01/1/V 3581663

DIMENSIONS

(with diversion plate)

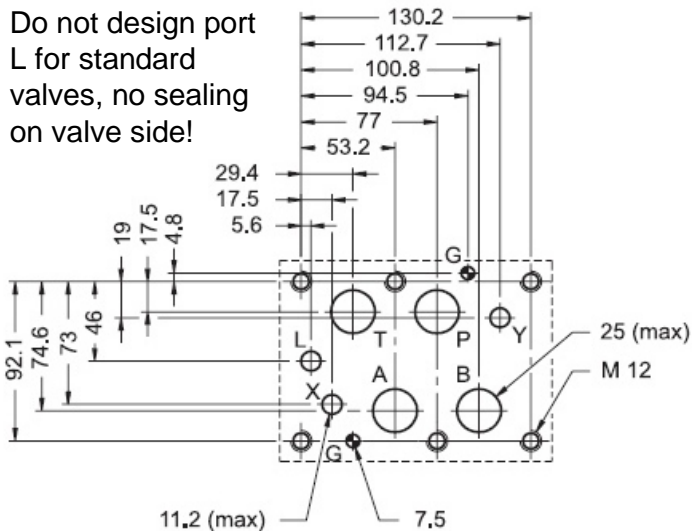


Mounting Screws: 6x M12 x 60 DIN 912
 Torque: 115 + 5 Nm for 12.9 or 64 Nm for 8.8
 Seals: 4x O-Ring 29,82 x 2,62 – 90 Sh
 2x O-Ring 20,24 x 2,62 – 90 Sh

All dimensions in mm.
 Plugs and fastening screws are not in the scope of supply.

Hole pattern according to ISO 4401-08

Do not design port L for standard valves, no sealing on valve side!



Annotation
 The technical information in this brochure are relating to the operating conditions and applications. At deviant applications and/or operating conditions please contact the technical dept. Technical information are subject to technical modifications.

HYDAC Fluidtechnik GmbH
 Justus-von-Liebig-Str. 5
 66280 Sulzbach / Saar
 Tel.: 06897 / 509 -0
 Fax: 06897 / 509 -598
 Email: flutec@hydac.com

