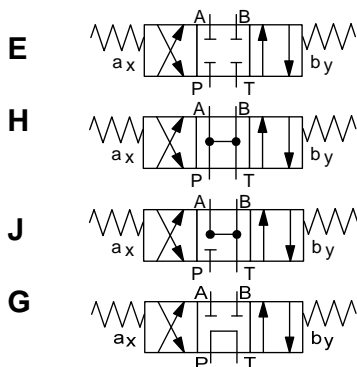




## 4/3-Directional control valve

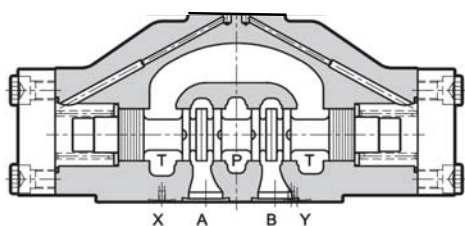
Hydraulically operated  
Optional with diversion plate,  
or pilot valve  
**4WH E 32**

### SYMBOL



up to 350 bar  
up to 1100 l/min

### FUNCTION



### FEATURES

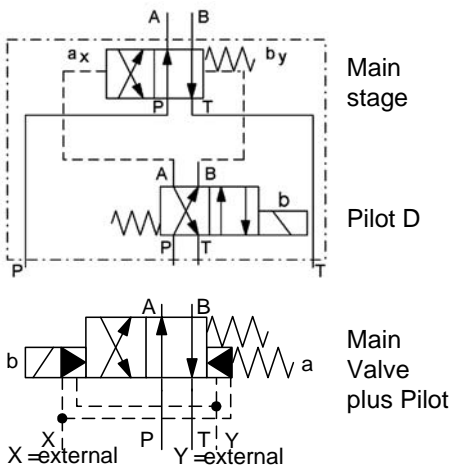
- Pattern according DIN 24340, ISO 4401
- Hydraulically operated directional valve
- Electro-hydraulically operated with pilot valve NW6 or hydraulically operated with diversion plate
- Flow up to 1100l/min
- Internal or external ported pilot supply and drain line selectable by internal plug setting
- Attention: Pilot valve, diversion plate and fixing screws are not in the scope of delivery

### SPECIFICATIONS

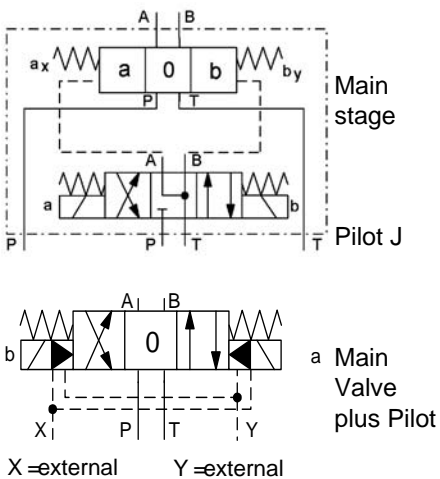
Operating pressure:	max. 350 bar
Flow rate:	max. 1100 l/min
Control pressure:	min. 12 up to max. 280 bar
Pressure on T line: (with internal drain)	max. 140 bar
Pressure on T line: (with external drain)	max. 250 bar
Fluids:	Hydraulic oil according to DIN 51524 part 1 and 2
Media operating temp. range:	-20°C up to max. +80°C
Ambient temp. range:	-20°C up to max. +50°C
Viscosity range:	10 – 400 mm <sup>2</sup> /s is recommended
Filtration:	Class 20/18/15 according to ISO 4406
Weight:	48 kg without pilot valve and short-circuit subplate

## Example for assembled pilot valve

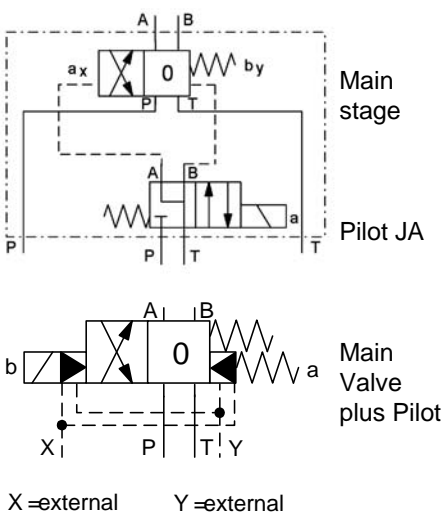
4/2 directional valve with spring offset Type 4WEH 25, 32



4/3 directional valve spring centered Type 4WEH 25, 32

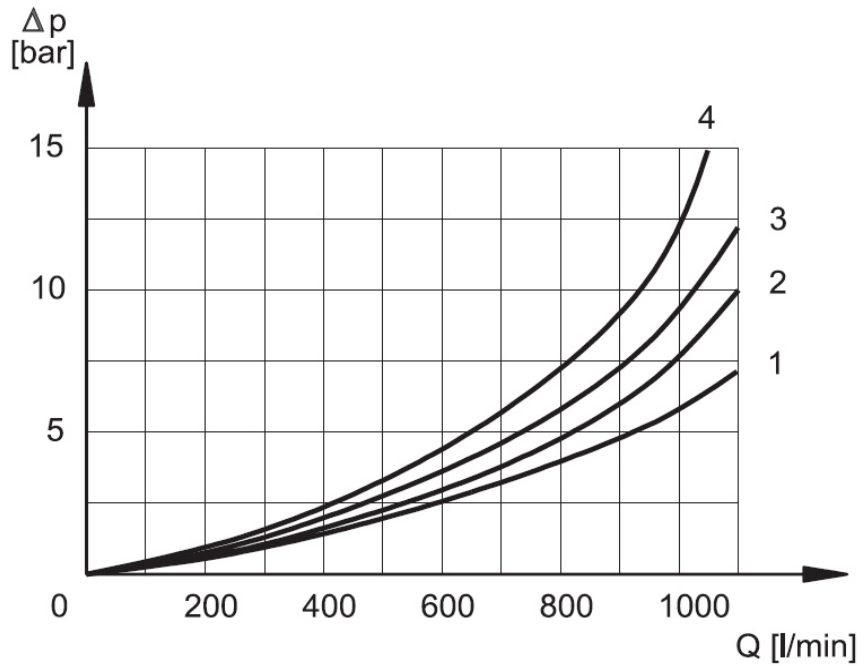


4/2 directional valve with spring offset Type 4WEH 25, 32



## PERFORMANCE

Measured at  $v = 33 \text{ mm}^2/\text{s}$  and  $T_{oil} = 46^\circ \text{ C}$

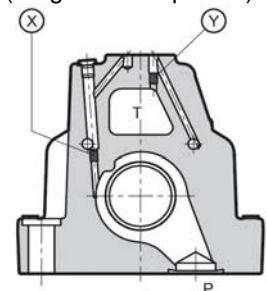


Piston	Loss - switched valve			
	P-A	P-B	A-T	B-T
	Curves			
E	1	1	1	1
H	2	2	2	2
J	1	1	4	4
G	2	2	2	2

Piston	Loss - Valve in central position				
	P-A	P-B	A-T	B-T	P-T
	Curves				
H					3
J			4	4	
G					4

Valve type	Plug setting	
	X	Y
Internal pilot supply and external drain	no plug	plug
I Internal pilot supply and drain	no plug	no plug
external pilot supply and drain	plug	plug
EI external pilot supply and internal drain	plug	no plug

## Sectional view (Plugs M 6 x 8 placed)



### Standard models

Standard models	Part-no.
4WH E 32 E S01 /V	6079053
4WH E 32 H S01 /V	3641337
4WH E 32 J S01 /V	6079054
4WH E 32 G S01 /V	3641340

Other models on request

### Part-no.

### MODEL CODE

4WH E 32 E S01 / V / U

**Name** \_\_\_\_\_  
4/3-directional control valve

**Pilot supply and drain** \_\_\_\_\_  
E = Control fluid inlet and outlet external

**Nominal size** \_\_\_\_\_  
32 = NW 32

**Symbol for main stage** \_\_\_\_\_  
Available symbols: E, J, G, H

**Type** \_\_\_\_\_  
S01 = Standard

**Seals** \_\_\_\_\_  
V = FKM (Standard)  
N = NBR

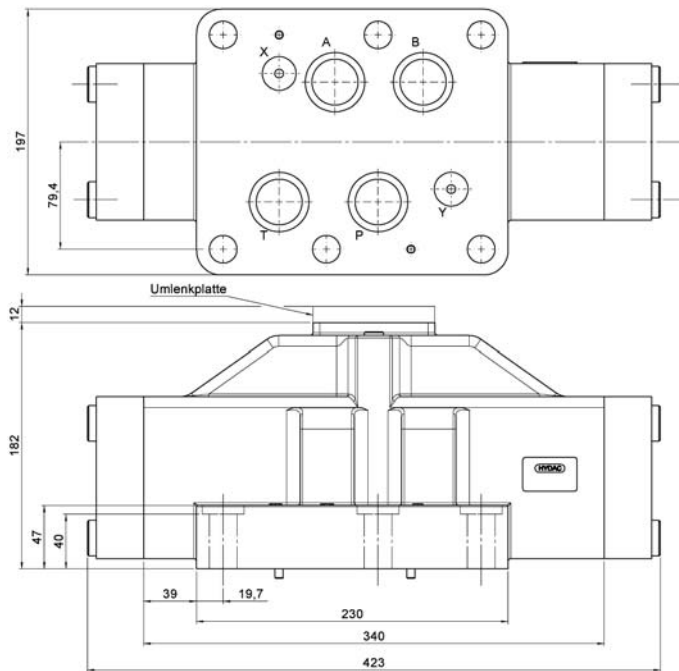
**Option** \_\_\_\_\_  
U = with diversion plate PATB and Mounting screws  
Omission = without diversion plate (Standard)

### Diversion plates (see accessory equipment)

UP-6-PATB-S01/1/V	3581661
UP-6-PBTA-S01/1/V	3581663

### DIMENSIONS

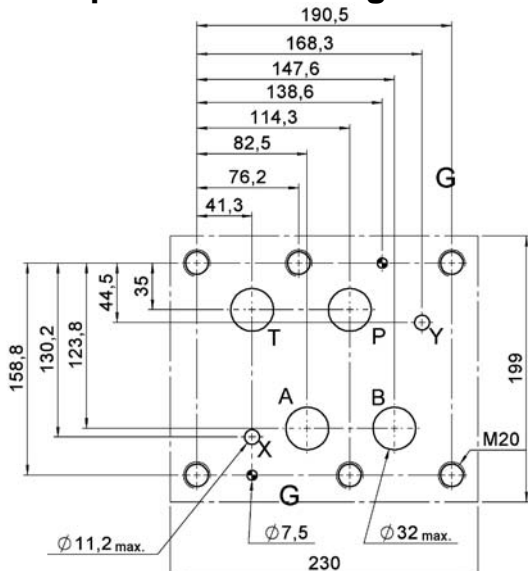
(with diversion plate)



Fixing screws: 6x M20 x 70 DIN 912  
Torque: 560 + 20 Nm for 12.9 or 330 Nm for 8.8  
Seals: 4x O-Ring 37,59 x 3,53 – 90 Sh  
2x O-Ring 20.24 x 2,62 – 90 Sh

All dimensions in mm.  
Plugs and fastening screws are not in the scope of supply.

### Hole pattern according ISO 4401-10-09-0-05



**Annotation**  
The technical information in this brochure are relating to the operating conditions and applications. At deviant applications and/or operating conditions please contact the technical dept. Technical information are subject to technical modifications.

HYDAC Fluidtechnik GmbH  
Justus-von-Liebig-Str. 5  
66280 Sulzbach / Saar  
Tel.: 06897 / 509 -0  
Fax: 06897 / 509 -598  
Email: flutec@hydac.com

