

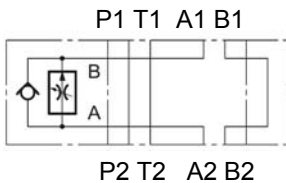


up to 250 bar  
up to 30 l/min

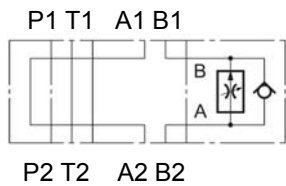
## Flow Regulator pressure-compensated, with reverse flow check Sandwich plate type **ZW-2SR06**

### SYMBOL

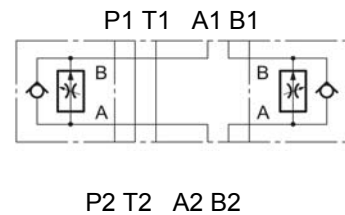
#### ZW-2SR06 AA



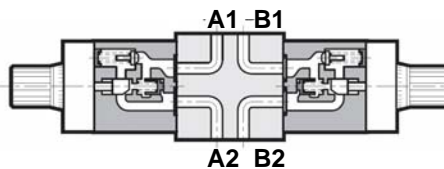
#### ZW-2SR06 AB



#### ZW-2SR06 AAB



### Function



### FEATURES

- Hole pattern to DIN 24340 Form A6, ISO 4401-03, nominal size 06
- Flow regulator with reverse flow check sandwich plate type for flow control in one direction, free backflow in opposite direction
- easy to assemble under body mounted spool valves to DIN 24340 Form A6, ISO 4401 (use longer screws)
- type to ISO 7790
- adjustable per turning knob

### Types

- type AA: flow control in line A
- type AB: flow control in line B
- type AAB: flow control in line A and B

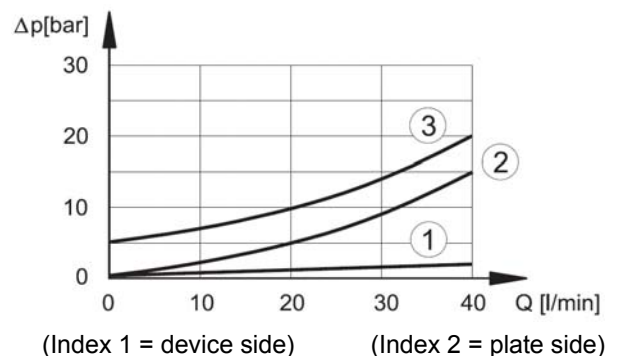
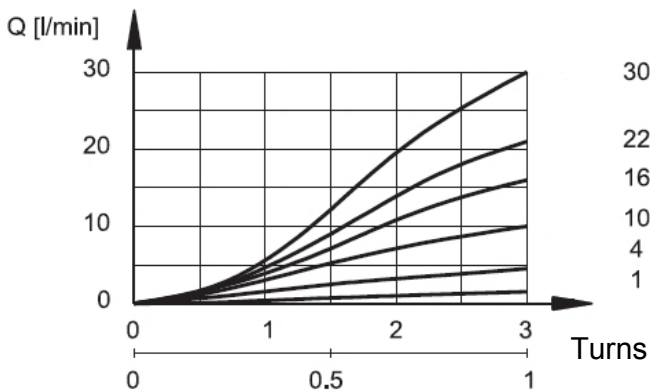
### SPECIFICATIONS

Nominal pressure:	max. 250 bar
Adjustable flow rates:	max. 1 / 4 / 10 / 16 / 22 / 30 l/min
Nominal flow:	max. 40 l/min (in controled lines) max. 65 l/min (in free lines)
Fluids:	Hydraulic fluid to DIN 51524 part1 and 2
Media operating temp. range:	-20°C up to max. +80°C
Ambient temperature range:	-20°C up to max. +50°C
Viscosity range:	10 – 400 mm <sup>2</sup> /s is recommended
Filtration:	Class 20/18/15 to ISO 4406 or cleaner
Weight:	3 kg incl. valve (AAB 4,1 kg)

### PERFORMANCE

measured at  $\nu = 32\text{mm}^2/\text{s}$  and  $T_{\text{oil}} = 50^\circ\text{C}$

- Pressure drop  $dP / Q$
- 1 - Pressure drop free lines
  - 2 - Pressure drop through check valve
  - 3 - optional



Standard models	Part-No.
ZW-2SR06-01- AA -01- V	3535596
ZW-2SR06-01- AA -04- V	3535600
ZW-2SR06-01- AA -10- V	3535603
ZW-2SR06-01- AA -16- V	3535636
ZW-2SR06-01- AA -22- V	3535638
ZW-2SR06-01- AA -30- V	3535641

ZW-2SR06-01- AB -01- V	3535648
ZW-2SR06-01- AB -04- V	3535650
ZW-2SR06-01- AB -10- V	3535651
ZW-2SR06-01- AB -16- V	3535653
ZW-2SR06-01- AB -22- V	3535654
ZW-2SR06-01- AB -30- V	3535657

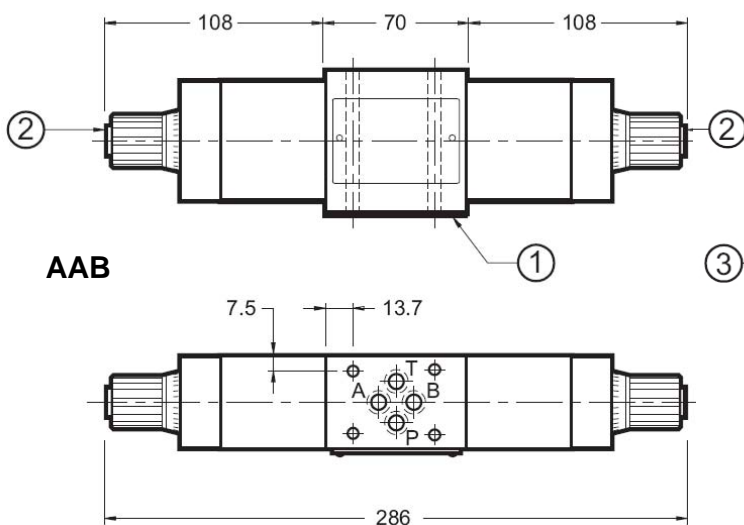
ZW-2SR06-01- AAB -01- V	3535659
ZW-2SR06-01- AAB -04- V	3535660
ZW-2SR06-01- AAB -10- V	3535661
ZW-2SR06-01- AAB -16- V	3535663
ZW-2SR06-01- AAB -22- V	3535664
ZW-2SR06-01- AAB -30- V	3535668

other types on request

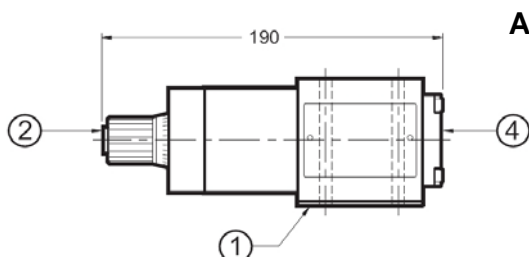
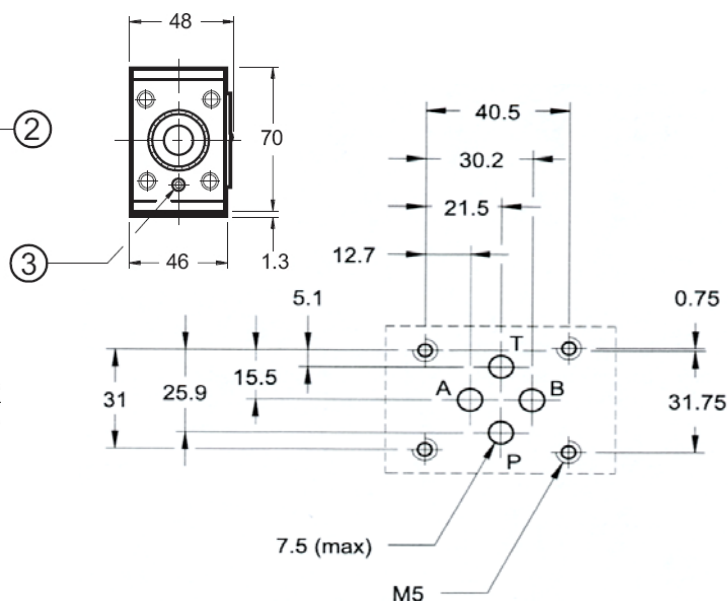
## MODEL CODE

<b>Name and nominal size</b>	ZW-2SR06 - 01 - AA - 01 - V
Flow control valve	
Sandwich plate type NW6	
<b>Series</b>	01 = Standard, phosphated
<b>Types</b>	AA = flow control in line A AB = flow control in line B AAB = flow control in line A and B
<b>Flow ranges</b>	01 = 1 l/min 04 = 4 l/min 10 = 10 l/min 16 = 16 l/min 22 = 22 l/min 30 = 30 l/min
<b>Seal material</b>	V = FKM (Standard) N = NBR

## DIMENSIONS

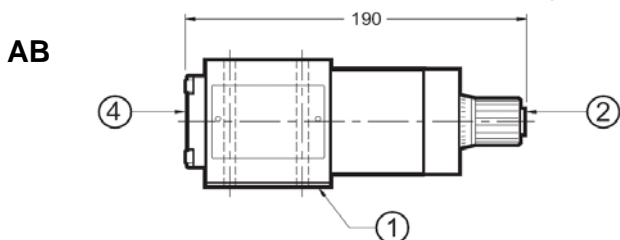


## Mounting plate to ISO 4401-03



- AA**
- 1 - O-Ring plate with O-Rings:  
8.73 x 1.78 FKM (Mat. 613691)
  - 2 - Short circuit plate
  - 3 - optional
  - 4 - Cover

All dimensions in mm.  
Fastening elements are not in the scope of supply.



**Annotation**  
The information in this brochure relates to the operating conditions and applications described. For applications or operating conditions not described, please contact the relevant technical department. Subject to technical modifications.

HYDAC Fluidtechnik GmbH  
Justus-von-Liebig-Str. 5  
D - 66280 Sulzbach / Saar  
Tel. 06897 / 509 -01  
Fax 06897 / 509 -598  
Email flutec@hydac.com