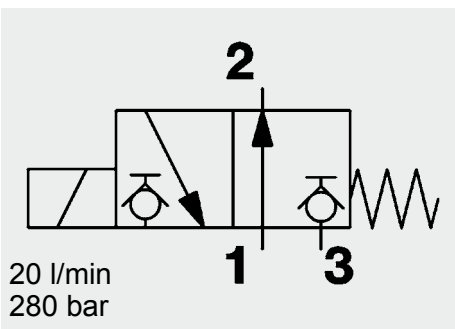
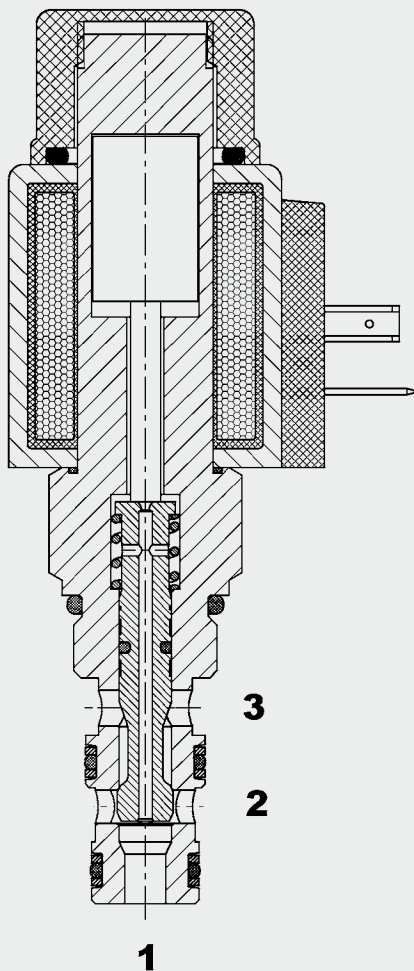


3/2 Solenoid Directional Valve **UNF** Poppet Type, Direct-Acting SAE-08 Cartridge – 280 bar

WS08D-51



FUNCTION



When de-energized, there is free flow through the valve from port 1 to port 2. Port 3 is closed.

When energized, the valve allows flow from port 2 to port 3, while blocking flow at port 1.

FEATURES

- Excellent switching performance due to high power HYDAC solenoid
- Hardened and ground internal valve components to ensure minimal wear and extended service life
- External surfaces zinc-plated and corrosion-proof
- Wide variety of connectors available
- Low pressure drop by CFD optimized flow path
- Smaller dimensions by shorter coil in comparison to WS08D-01 (Limited switching performance)

SPECIFICATIONS

Operating pressure:	max. 280 bar	
Nominal flow:	max. 20 l/min	
Leakage:	Leak-free (max. 5 drops \approx 0,25 cm ³ /min at 280 bar)	
Media operating temperature range:	min. -20 °C to max. +100 °C	
Ambient temp. range:	min. -20 °C to max. +60 °C	
Operating fluid:	Hydraulic oil to DIN 51524 Part 1 and 2	
Viscosity range:	min. 7.4 mm ² /s to max. 420 mm ² /s	
Filtration:	Class 21/19/16 according to ISO 4406 or cleaner	
MTTF _d :	150 years (see "Conditions and instructions for valves" in brochure 5.300)	
Installation:	No orientation restrictions	
Materials:	Valve body:	Free-cutting steel
	Piston:	hardened and ground steel
	Seals:	NBR (standard) FKM (optional, media temperature range -20 °C to +120 °C)
	Back-up rings:	PTFE
	Coil:	Steel/Polyamide
Cavity:	FC08-3	
Weight:	Valve complete	0.395 kg
	Coil only	0.19 kg

Electrical data:

Coil duty rating:	Continuous up to max. 115% of the nominal voltage at 60 °C ambient temperature	
Current draw at 20 °C:	1.5 A at 12 V DC	
	0.8 A at 24 V DC	
Voltage tolerance:	\pm 15% of the nominal voltage	
	Switching time:	Energized: approx. 35 ms De-energized: approx. 45 ms
Coil type:	Coil...-40-1836	

