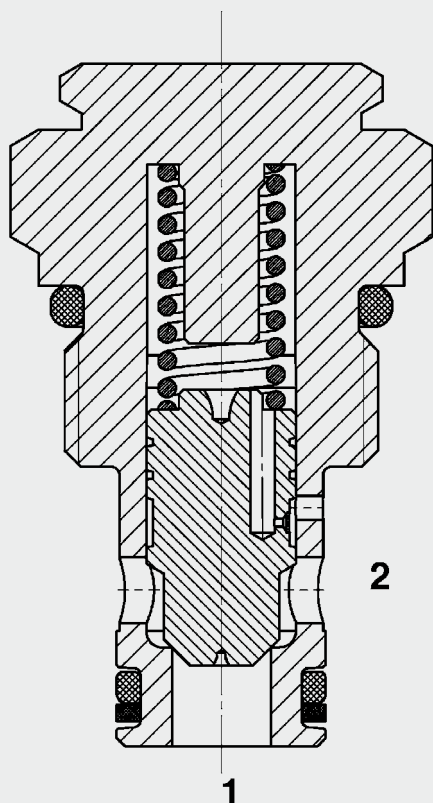




Up to 38 l/min
Up to 350 bar

FUNCTION



The check valve RV08A-51 is a direct acting cone poppet type valve. When there is no flow through the valve, the spring holds the cone in the closed position and therefore shuts off port 2 from port 1. The valve opens when the pressure across port 1 is higher than the pressure across port 2, including the pressure created by the spring force.

Check Valve Cone Poppet Type Direct Acting SAE-08 Cartridge – 350 bar

RV08A-51

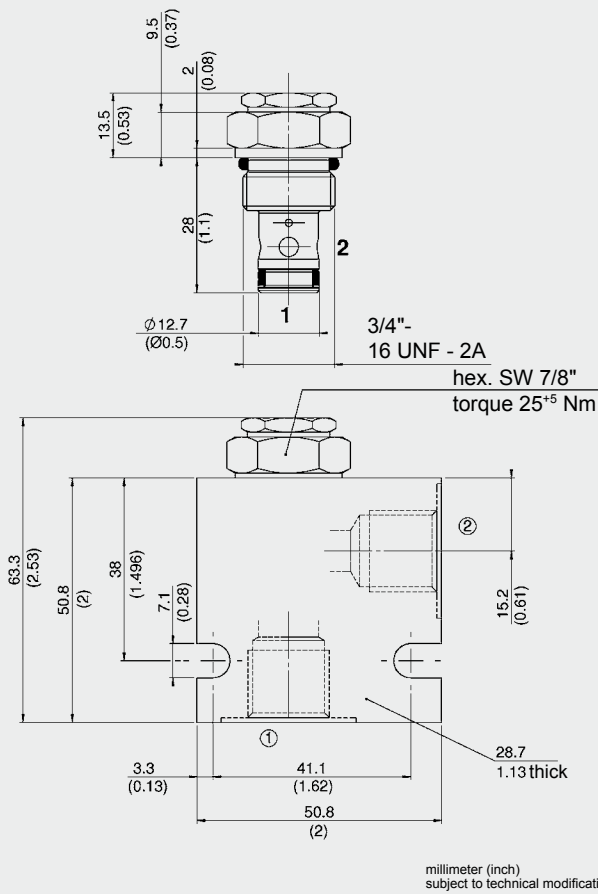
FEATURES

- High performance version for high cycle rate
- Main application is to prevent uncontrolled movement or creeping of loaded cylinders and also to shut-off sections of the system
- Excellent stability throughout the entire flow range
- External surfaces zinc-plated and corrosion-proof
- Hardened and ground internal valve components to ensure minimal wear and extended service life
- Low pressure drop due to CFD optimized flow path
- Improved abrasion resistance achieved by a guided and damped piston

SPECIFICATIONS

Operating pressure:	max. 350 bar
Nominal flow:	max. 38 l/min
Internal leakage:	0.05 cm ³ at 350 bar
Opening pressure:	0.35 bar (others on request)
Media operating temperature range:	min. -30 °C to max. +100 °C
Ambient temp. range:	min. -30 °C to max. +100 °C
Operating fluid:	Hydraulic oil to DIN 51524 Part 1 and 2
Viscosity range:	min. 10 mm ² /s to max. 420 mm ² /s
Filtration:	Class 21/19/16 according to ISO 4406 or cleaner
MTTF _d :	150 years (see "Conditions and instructions for valves" in brochure 5.300)
Installation:	No orientation restrictions
Material:	Valve body: steel Piston: ground steel Seals: NBR (standard) FKM (optional, media temperature range -20 °C to +120 °C) Back-up rings: PTFE
Cavity:	FC08-2
Weight:	0.06 kg

DIMENSIONS



MODEL CODE

RV08A - 51 - C - N - 05

Basic model _____
Check valve UNF

Type _____
51 = poppet type, optimized for high cycle rate

Body and ports* _____
C = Cartridge only
SB3 = G3/8 ports, steel body
AB3 = G3/8 ports, aluminium body
Versions with line bodies on request

Seals _____
N = NBR (standard)
V = FKM (optional)

Cracking pressure _____
0.5 = 0.35 bar (5 psi)
Others on request

Standard models

Model code	Part No.
RV08A-51-C-N-05	3347912
RV08A-51-C-N-70	560087

Other models on request

* Standard in-line bodies

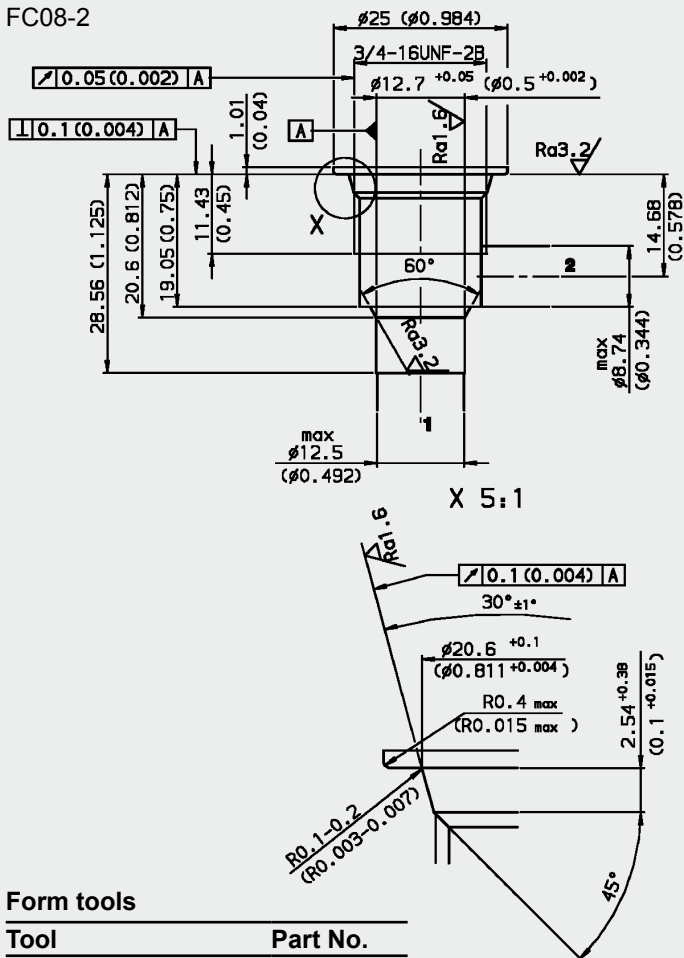
Code	Part No.	Material	Ports	Pressure
FH082-SB3	560919	Steel, zinc-plated	G3/8	420 bar
FH082-AB3	3011423	Aluminium	G3/8	210 bar

Seal kits

Code	Material	Part No.
Seal kit FS082-N	NBR	3033920
Seal kit FS082-V	FKM	3051756

CAVITY

FC08-2

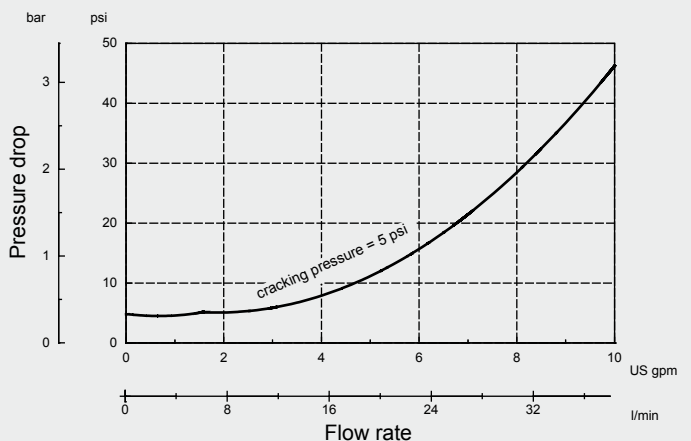


Form tools

Tool	Part No.
Countersink FC08-2	175473
Reamer FC08-2	175474

PERFORMANCE

Measured at $v = 34 \text{ mm}^2/\text{s}$, $T_{oil} = 46 \text{ }^\circ\text{C}$



NOTE

The information in this brochure relates to the operating conditions and applications described. For applications or operating conditions not described, please contact the relevant technical department.
Subject to technical modifications.

HYDAC Fluidtechnik GmbH
Justus-von-Liebig-Str.
D-66280 Sulzbach/Saar
Tel: 0 68 97 /509-01
Fax: 0 68 97 /509-598
E-Mail: flutec@hydac.com