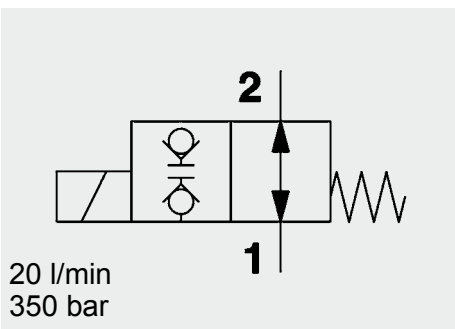
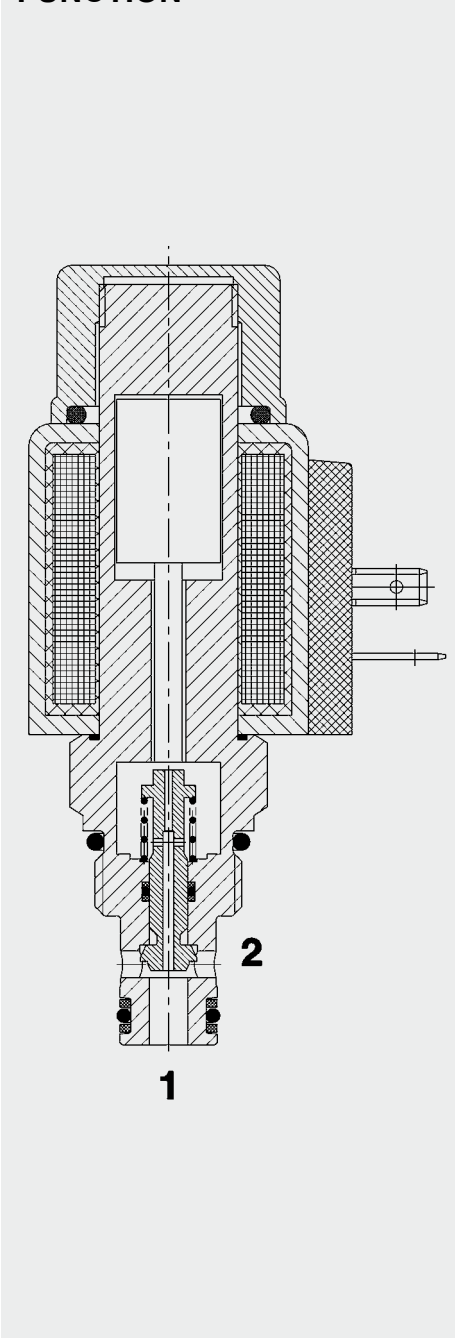


3/2-Solenoid Directional Valve **UNF** **Poppet Type, Direct-Acting** **Normally Open** **SAE-08 Cartridge – 350 bar**

WS08V-01



FUNCTION



When the solenoid coil is not energized, the valve is open in both directions.
 When the solenoid coil is energized, the valve is closed in both directions.

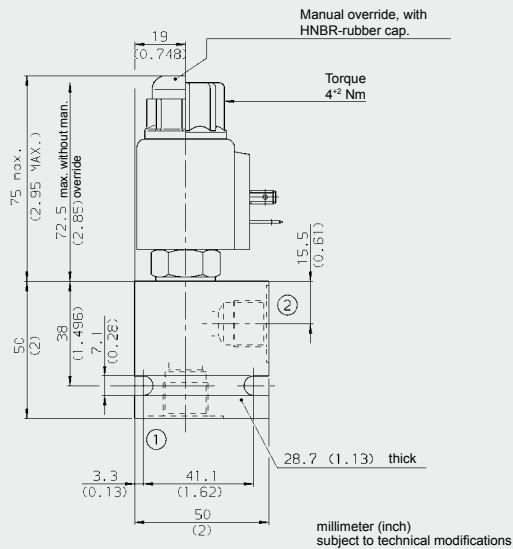
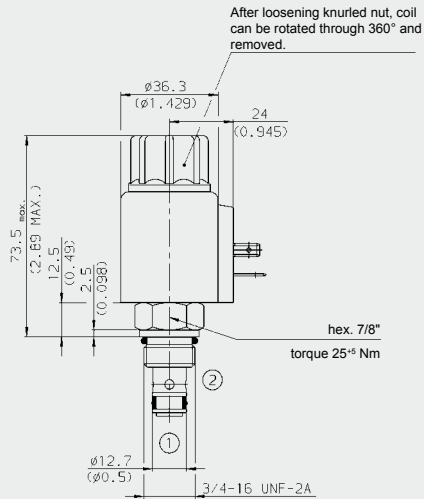
FEATURES

- Excellent switching performance by high power HYDAC solenoid
- Hardened and ground internal valve components to ensure minimal wear and extended service life
- External surfaces zinc-plated and corrosion-proof
- Wide variety of connectors available
- Low pressure drop due to CFD optimized flow path

SPECIFICATIONS

Operating pressure:	max. 350 bar
Nominal flow:	max. 20 l/min
Leakage:	Leakage-free (max. 5 drops \approx 0,25 cm ³ /min at 350 bar)
Media operating temperature range:	min. -20 °C to max. +100 °C
Ambient temperature range:	min. -20 °C to max. +60 °C
Operating fluid:	Hydraulic oil to DIN 51524 Part 1 and 2
Viscosity range:	min. 7.4 mm ² /s to max. 420 mm ² /s
Filtration:	Class 21/19/16 according to ISO 4406 or cleaner
MTTF _a :	150 years (see "Conditions and instructions for valves" in brochure 5.300)
Installation:	No orientation restrictions
Materials:	Valve body: free-cutting steel Piston: hardened and ground steel Seals: NBR (standard) FKM (optional, media temperature range -20 °C to +120 °C) Back-up rings: PTFE Coil: steel / polyamide
Cavity:	FC08-2
Weight:	Valve complete 0.33 kg Coil only 0.19 kg
Electrical data:	
Coil duty rating:	Continuous up to max. 115% of the nominal voltage at 60 °C ambient temperature
Voltage tolerance	\pm 15 % of nominal voltage
Current draw at 20 °C:	1.5 A at 12 V DC 0.8 A at 24 V DC
Coil duty rating:	Continuous up to max. 115% of the nominal voltage at 60 °C ambient temperature
Switching time:	Energized: approx. 35 ms De-energized: approx. 70 ms
Coil type:	Coil...-40-1836

DIMENSIONS



MODEL CODE

WS08V-01 M-C-N-24 DG

Basic model ————
Directional poppet valve UNF

Type ————
01 = standard

Manual override ————
no details = without manual override
M = manual override

Body and ports* ————
C = cartridge only
SB3 = G3/8 ports, steel body
AB3 = G3/8 ports, aluminium body

Seals ————
N = NBR (standard)
V = FKM

Nominal voltage for actuating solenoid ————

DC:
12 = 12 V DC
24 = 24 V DC

AC voltages (bridge rectifier built into the coil)

115 = 115 V AC
230 = 230 V AC

Other voltages on request

Coil connectors (type 40-1836) ————

DC: DG = DIN connector to EN 175301-803
DK = KOSTAL threaded connection M27x1
DL = 2 flying leads, 457 mm long, 0.75 mm²
DN = Deutsch connector, 2-pole, axial
DT = AMP Junior Timer, 2-pole, radial

AC: AG = DIN connector to EN 175301-803
Other connectors on request

Standard models

Model code	Part No.
WS08V-01-C-N-24DG	3138653
WS08V-01-C-N-230AG	3138654

*Standard in-line bodies

Code	Part No.	Material	Ports	Pressure
FH082-SB3	560919	Steel, zinc-plated	G3/8	420 bar
FH082-AB3	3011423	Aluminium, clear anodized	G3/8	210 bar

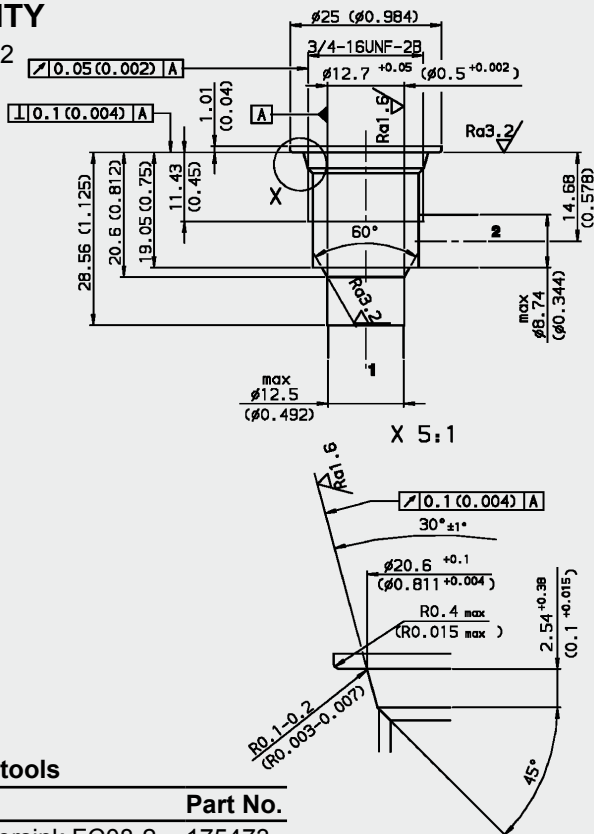
Other line bodies on request

Seal kits

Code	Material	Part No.
FS082-N SEAL KIT	NBR	3033920
FS082-V SEAL KIT	FKM	3051756

CAVITY

FC08-2



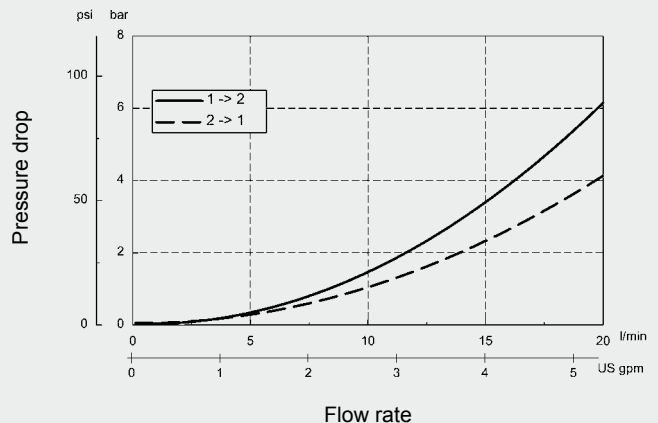
Form tools

Tool	Part No.
Countersink FC08-2	175473
Reamer FC08-2	175474

millimeter (inch)
subject to technical modifications

PERFORMANCE

Measured at $v = 34 \text{ mm}^2/\text{s}$, $T_{\text{oil}} = 46 \text{ }^\circ\text{C}$



NOTE

The information in this brochure relates to the operating conditions and applications described. For applications or operating conditions not described, please contact the relevant technical department.
Subject to technical modifications.

HYDAC Fluidtechnik GmbH

Justus-von-Liebig-Str.
D-66280 Sulzbach/Saar
Tel: 0 68 97 /509-01
Fax: 0 68 97 /509-598
E-Mail: flutec@hydac.com