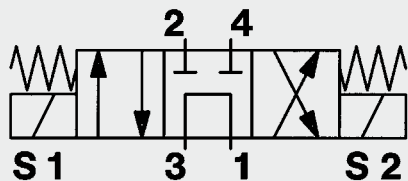


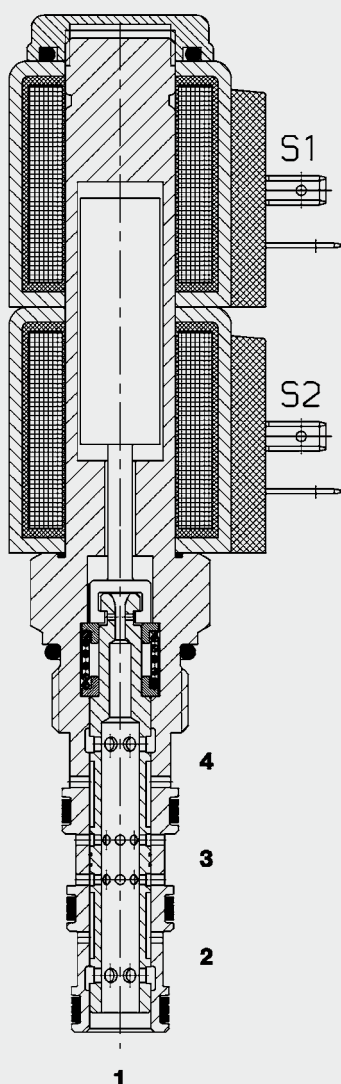
4/3 Solenoid Directional Valve **UNF** Spool Type, Direct-Acting SAE-10 Cartridge – 350 bar

WK10G-01



23 l/min
350 bar

FUNCTION



When de-energized, the valve allows flow from port 3 to 1, while blocking flow at ports 2 and 4. When solenoid coil S1 is energized, there is free flow through the valve from port 3 to 2 and from port 4 to 1. When solenoid coil S2 is energized, there is free flow through the valve from port 3 to 4 and from port 2 to 1.

FEATURES

- External surfaces zinc-plated and corrosion-proof
- Hardened and ground internal valve components to ensure minimal wear and extended service life
- Coil seals protect the solenoid system
- Wide variety of connectors available
- Excellent switching performance by high power HYDAC solenoid

SPECIFICATIONS

Operating pressure:	350 bar	
Nominal flow:	max. 23 l/min (Consult HYDAC for flow ratings above 207 bar)	
Internal leakage:	max. 280 cm ³ /min at 207 bar and 34 mm ² /s	
Media operating temperature range:	min. -20 °C to max. +100 °C	
Ambient temperature range:	min. -20 °C to max. +60 °C	
Operating fluid:	Hydraulic oil to DIN 51524 Part 1 and 2	
Viscosity range:	min. 7.4 to max. 420 mm ² /s	
Filtration	Class 21/19/16 according to ISO 4406 or cleaner	
MTTF _d :	150 years (see "Conditions and instructions for valves" in brochure 5.300)	
Installation:	No orientation restrictions	
Material:	Valve body:	free-cutting steel
	Spool:	hardened and ground steel
Seals:	NBR (standard)	
	FKM (optional, media temperature range -20 °C to +120 °C)	
Back-up rings:	PTFE	
Coil:	Steel / Polyamide	
Cavity:	FC10-4	
Weight:	Valve complete:	0.67 kg
	Coil only:	0.19 kg
Electrical data:		
Type of voltage:	DC solenoid, AC voltage is rectified using a bridge rectifier built into the coil	
Current draw at 20 °C:	1.5 A at 12 V DC	
	0.8 A at 24 V DC	
Voltage tolerance:	± 15 % of nominal voltage	
Coil duty rating:	Continuous up to max. 115% of nominal voltage at max. 60° C ambient temperature	
Coil type:	Coil...-40-1836 (2 pieces)	

