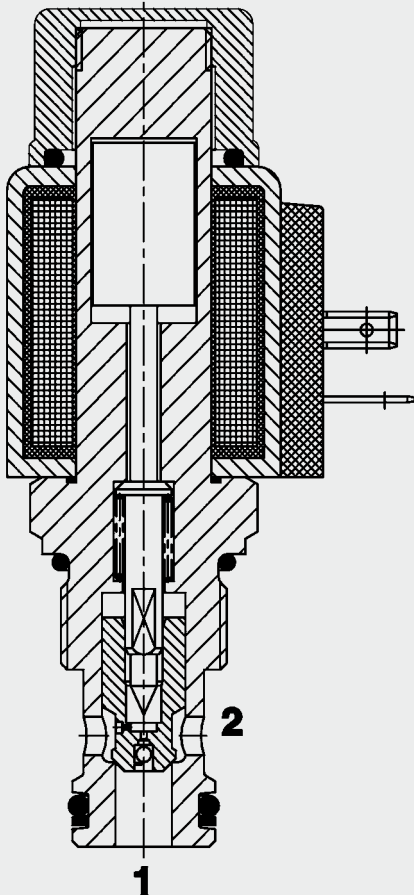


Up to 75 l/min
Up to 350 bar

FUNCTION



When the solenoid coil is de-energized, the valve is open in both directions.

When the solenoid coil is energized, the valve is closed from port 2 to port 1. In the reverse direction the valve will allow flow from port 1 to 2 when the hydraulic force on the piston overcomes the solenoid force (approx. 2.5 to 10 bar).

2/2 Solenoid Directional Valve Poppet Type, Pilot Operated Normally Open (Reverse Flow) Metric Cartridge Valve – 350 bar

WSM10120YR-01

FEATURES

- External surfaces zinc-plated and corrosion-proof
- Hardened and ground internal valve components to ensure minimal wear and extended service life
- Coil seals protect the solenoid system
- Excellent switching performance by high power HYDAC solenoid
- Low pressure drop due to CFD optimized flow path

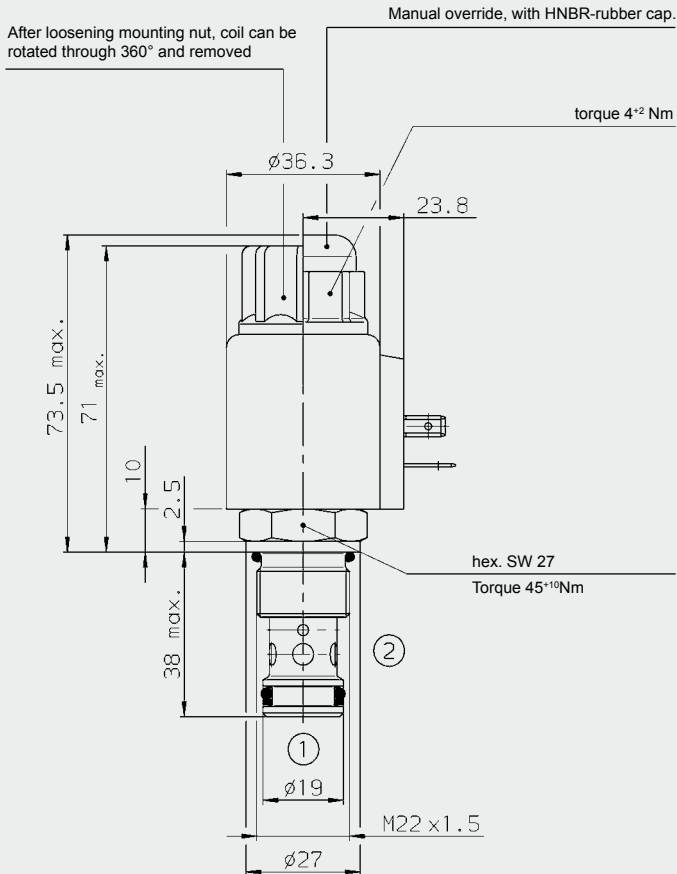
SPECIFICATIONS

Operating pressure:	max. 350 bar
Nominal flow:	max. 75 l/min
Internal leakage:	Leakage-free (max. 5 drops \approx 0,25 cm ³ /min at 350 bar)
Media operating temperature range:	min. -20 °C to max. +100 °C
Ambient temperature range:	min. -20 °C to max. +60 °C
Operating fluid:	Hydraulic oil to DIN 51524 Part 1 and 2
Viscosity range:	min. 10 mm ² /s to max. 420 mm ² /s
Filtration:	Class 21/19/16 according to ISO 4406 or cleaner
MTTF _d :	150 years (see "Conditions and instructions for valves" in brochure 5.300)
Installation:	No orientation restrictions
Materials:	Valve body: free-cutting steel Poppet: hardened and ground steel Seals: NBR (standard) FKM (optional, media temperature range -20 °C to +120 °C) Back-up rings: PTFE Coil: steel / polyamide
Weight:	Valve complete 0.37 kg Coil only 0.19 kg

Electrical data

Type of voltage:	DC solenoid, AC voltage is rectified using a bridge rectifier built into the coil
Current draw at 20 °C:	1.5 A at 12 V DC 0.8 A at 24 V DC
Voltage tolerance:	\pm 15% of the nominal voltage
Coil duty rating:	Continuous up to max. 115% of the nominal voltage at 60 °C ambient temperature
Response time:	Energized: approx. 60 ms De-energized: approx. 20 ms
Coil type:	Coil...-40-1836

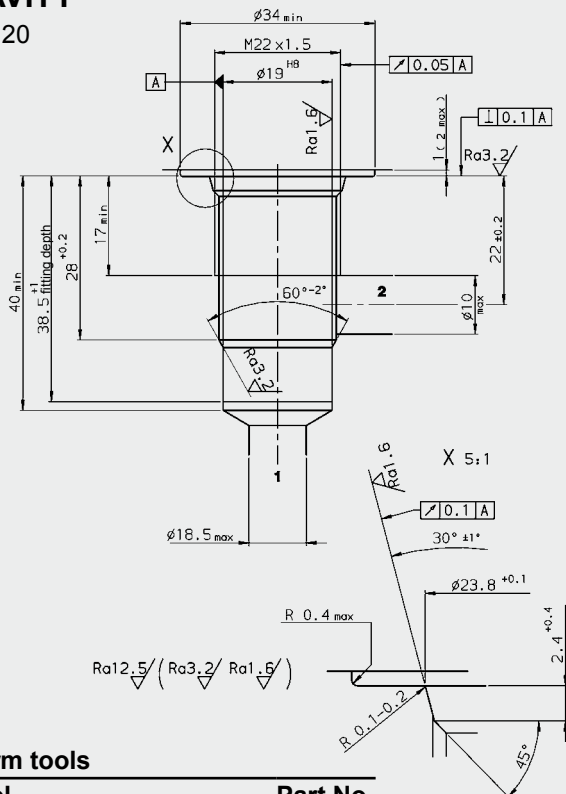
DIMENSIONS



millimeter
subject to technical modifications

CAVITY

10120



Form tools

Tool	Part No.
Countersink (shank MK3)	170418
Reamer (shank MK2)	1014206

millimeter
subject to technical modifications

MODEL CODE

WSM10120YR - 01 M - C - N - 24 DG

Basic model

Directional poppet valve, metric

Type

01 = standard

Manual override

no details = without manual override

M = manual override

Body and ports*

C = cartridge only

Seals

N = NBR (standard)

V = FKM

Coil voltage

DC voltages

12 = 12 V DC

24 = 24 V DC

AC voltages (bridge rectifier built into the coil)

115 = 115 V AC

230 = 230 V AC

Other voltages on request

Coil connectors (type 40-1836)

DC: DG = DIN connector to EN 175301-803

DK = KOSTAL-threaded connection M27x1

DL = 2 flying leads, 457 mm long; 0.75 mm²

DN = Deutsch connector, 2-pole, axial

DT = AMP Junior Timer, 2-pole, radial

AC: AG = DIN connector to EN 175301-803

Other connectors on request

Standard models

Model code	Part No.
WSM10120YR-01-C-N-24DG	3179040
WSM10120YR-01-C-N-230AG	3576069

*Standard in-line bodies

Code	Part No.	Material	Ports	Pressure
R10120-01X-01	395234	Steel, zinc-plated	G 1/2	max. 420 bar

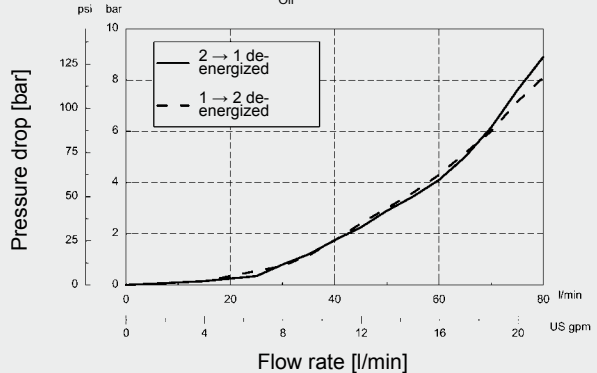
For other connection housings, see brochure no. E 5.252.

Seal kits

Code	Material	Part No.
SEAL KIT 10120-NBR	NBR	3382346
SEAL KIT 10120-FKM	FKM	3178281

PERFORMANCE

Measured at $v = 33 \text{ mm}^2/\text{s}$ $T_{\text{oil}} = 46 \text{ }^\circ\text{C}$



Note

The information in this brochure relates to the operating conditions and applications described. For applications or operating conditions not described, please contact the relevant technical department.
Subject to technical modifications.

HYDAC Fluidtechnik GmbH

Justus-von-Liebig-Str.
D-66280 Sulzbach/Saar
Tel: 0 68 97 /509-01
Fax: 0 68 97 /509-598
E-Mail: flutec@hydac.com