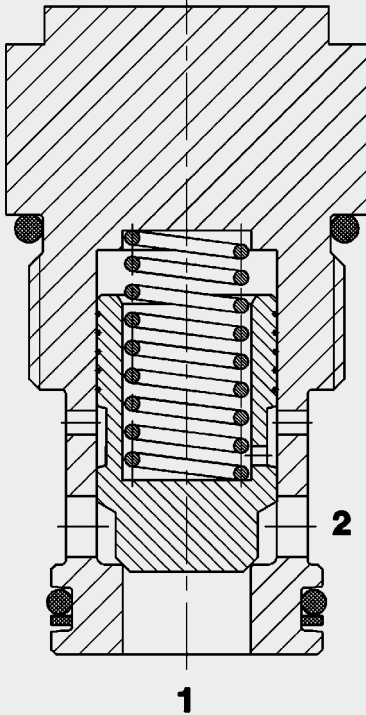


Check Valve Poppet Type Direct Acting SAE-16 Cartridge – 420 bar RV16A-01



Up to 165 l/min
Up to 420 bar

FUNCTION



The check valve RV16A is a direct-acting, spring-loaded poppet valve.

When there is no flow through the valve, the spring holds the cone poppet in the closed position and therefore shuts off port 2 from port 1. The valve opens when the pressure at port 1 is higher than the pressure at port 2, including the pressure created by the spring force.

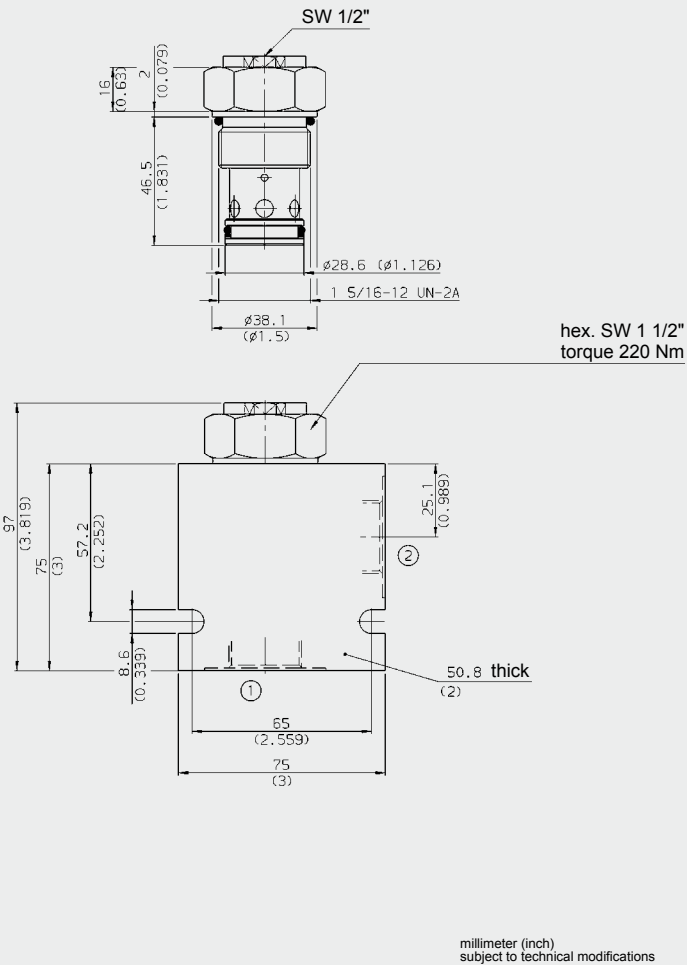
FEATURES

- Main application is to prevent uncontrolled movement or creeping of loaded cylinders and also to shut off sections of the system
- Excellent stability throughout the entire flow range
- External surfaces zinc-plated
- Hardened and ground valve components to ensure minimal wear and extended service life
- Low pressure drop due to CFD optimized flow path

SPECIFICATIONS

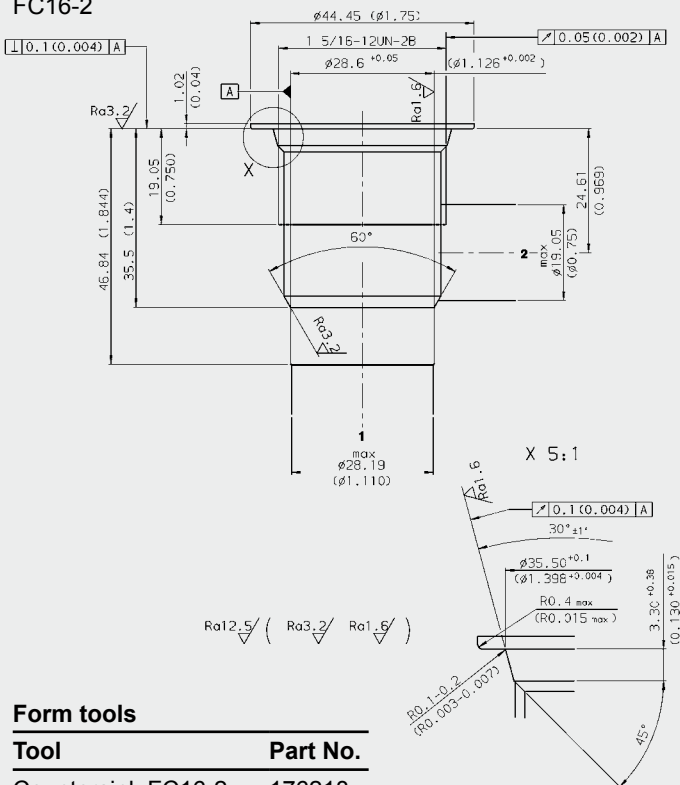
Operating pressure:	max. 420 bar
Nominal flow:	max. 165 l/min
Leakage:	max. 0.1 cm ³ /min at 420 bar
Standard cracking pressures:	05 = 0.35 bar 15 = 1.0 bar 30 = 2.0 bar 70 = 5.0 bar 100 = 7.0 bar
Media operating temperature range:	min. -30 °C to max. +100 °C
Ambient temperature range:	min. -30 °C to max. +100 °C
Operating fluid:	Hydraulic oil to DIN 51524 Part 1 and 2
Viscosity range:	min. 7.4 mm ² /s to max. 420 mm ² /s
Filtration:	Class 21/19/16 according to ISO 4406 or cleaner
MTTF _d :	150 years (see "Conditions and instructions for valves" in brochure 5.300)
Installation:	No orientation restrictions
Materials:	Valve body: high tensile steel Poppet: hardened and ground steel Seals: NBR (standard) FKM (optional, media temperature range -20 °C to +120 °C) Back-up rings: PTFE
Cavity:	FC16-2
Weight:	0.345 kg

DIMENSIONS



CAVITY

FC16-2



Form tools

Tool	Part No.
Countersink FC16-2	176218
Reamer FC16-2	176219

MODEL CODE

RV16A - 01 C - N - 05

Basic model _____
Check valve, poppet type, NG16

Type _____
01 = standard

Body and Ports* _____
C = Cartridge only
SB8 = G1 ports, steel body
AB8 = G1 ports, aluminium body

Seals _____
N = NBR (standard)
V = FKM (optional)

Cracking pressure _____
05 = 0.35 bar (5 psi)
15 = 1.0 bar (15 psi)
30 = 2.0 bar (30 psi)
70 = 5.0 bar (70 psi)
100 = 7.0 bar (100 psi)
Other pressure settings on request

Standard models

Model code	Part No.
RV16A-01-C-N-05	3015349
RV16A-01-C-N-15	3015350
RV16A-01-C-N-30	3015351
RV16A-01-C-N-70	3015352
RV16A-01-C-N-100	3555397

Other models on request

*Standard in-line bodies

Code	Part No.	Material	Ports	Pressure
FH162-SB8	3032496	Steel, zinc-plated	G1	420 bar
FH162-AB8	3037193	Aluminium, anodized	G1	210 bar

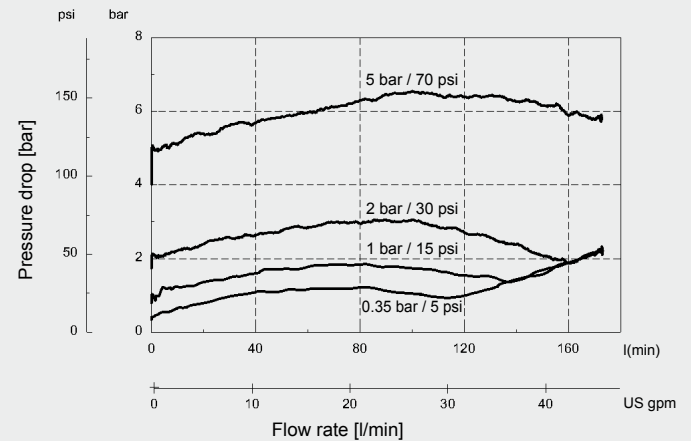
Other line bodies on request

Seal kits

Code	Material	Part No.
FS162-N SEAL KIT	NBR	3052427
FS162-V SEAL KIT	FKM	3051758

PERFORMANCE

Measured at $v = 34 \text{ mm}^2/\text{s}$, $T_{\text{oil}} = 46 \text{ }^\circ\text{C}$



Note

The information in this brochure relates to the operating conditions and applications described. For applications or operating conditions not described, please contact the relevant technical department.
Subject to technical modifications.

HYDAC Fluidtechnik GmbH
Justus-von-Liebig-Str.
D-66280 Sulzbach/Saar
Tel: 0 68 97 /509-01
Fax: 0 68 97 /509-598
E-Mail: flutec@hydac.com