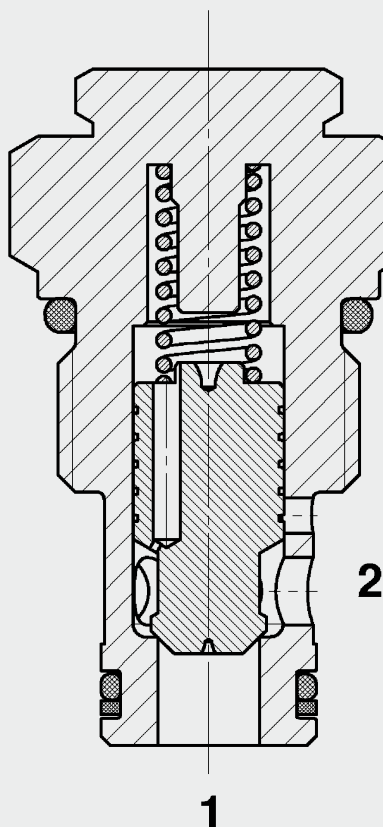




Up to 80 l/min
Up to 350 bar

FUNCTION



The RV10A-51 is a direct acting, spring-loaded, poppet type check valve. When there is no flow through the valve, the spring holds the cone poppet in the closed position and therefore shuts off port 2 from port 1. The valve opens when the pressure at port 1 is higher than the pressure at port 2, including the pressure created by the spring force.

Check valve Poppet Type SAE-10 Cartridge – 350 bar RV10A-51

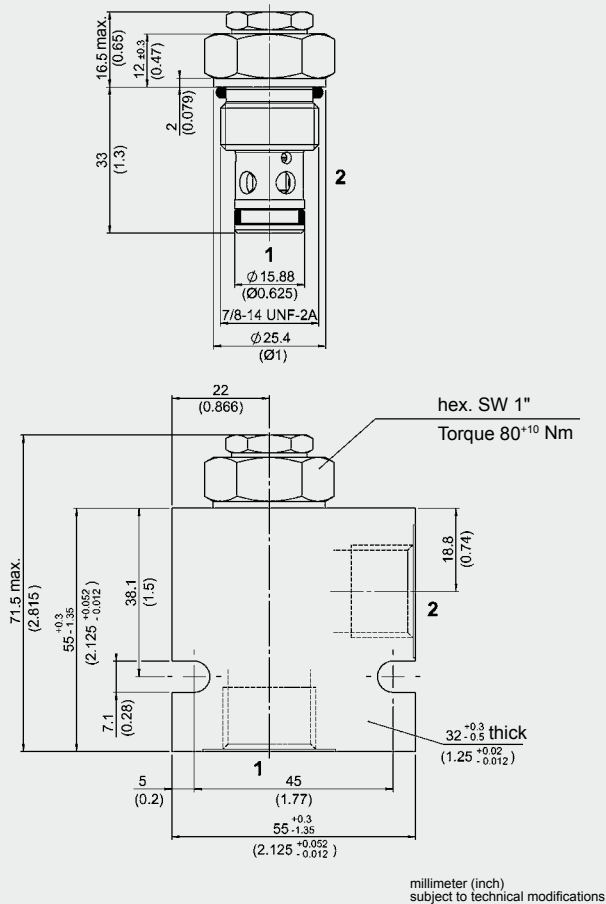
FEATURES

- Main application is to prevent uncontrolled movement or creeping of loaded cylinders and also to shut off sections of the system
- High performance version for high cycle rate
- Excellent stability throughout the entire flow range
- External surfaces zinc-plated and corrosion-proof
- Hardened and ground internal valve components to ensure minimal wear and extended service life
- Low pressure drop due to CFD optimized flow path

SPECIFICATIONS

Operating pressure:	max. 350 bar
Nominal flow:	max. 80 l/min
Internal leakage:	0.1 cm ³ at 350 bar
Cracking pressure:	0.5 bar (others on request)
Media operating temperature range:	min. -30 °C to max. +100 °C
Ambient temperature range:	min. -30 °C to max. +100 °C
Operating fluid:	Hydraulic oil to DIN 51524 Part 1 and 2
Viscosity range:	min. 2.8 mm ² /s to max. 800 mm ² /s
Filtration:	Class 21/19/16 according to ISO 4406 or cleaner
Installation:	No orientation restrictions
Materials:	Valve body: steel Poppet: hardened and ground steel Seals: NBR (standard) FKM (optional, media temperature range -20 °C to +120 °C) Back-up rings: PTFE
Cavity:	FC10-2
Weight:	0.11 kg

DIMENSIONS



MODEL CODE

RV 10A - 51 - C - N - 05

Basic model _____
Check valve UNF

Cavity _____
10A = 2-way cavity

Type _____
51 = poppet, optimized for high cycle rate (zinc-plated)

Body and ports* _____
C = cartridge only

Seals _____
N = NBR (standard)
V = FKM

Cracking pressure _____
05 = 0.35 bar
(others on request)

Standard models

Model code	Part No.
RV10A-51-C-N-05	3357644

Standard in-line bodies

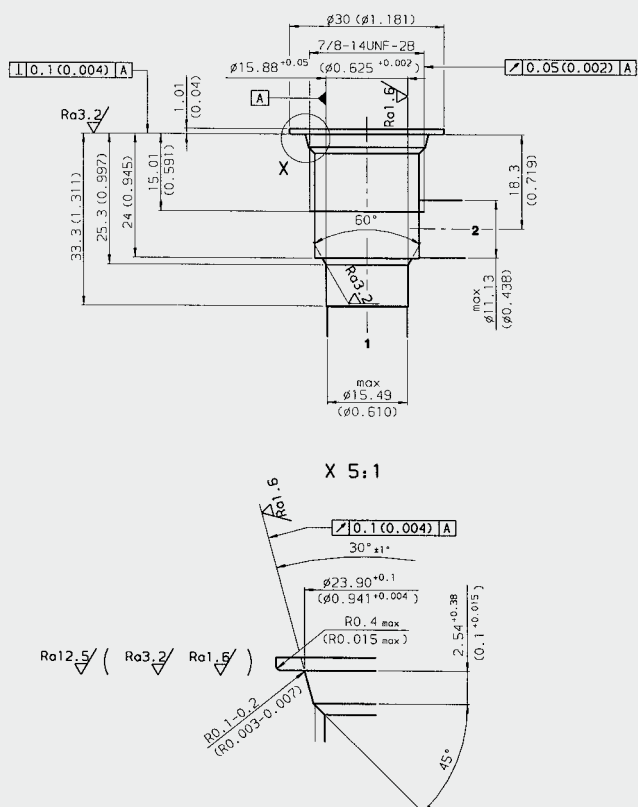
Code	Part No.	Material	Ports	Pressure
FH102-SB4	3037594	Steel, zinc-plated	G1/2	420 bar
FH102-AB4	3037777	Aluminium, anodized	G1/2	210 bar

Seal kits

Code	Material	Part No.
FS102-N SEAL KIT	NBR	3033872
FS102-V SEAL KIT	FKM	3051757

CAVITY

FC10-2



Form tools

Tool	Part No.
Countersink FC10-2	176379
Reamer FC10-2	165706

millimeter (inch) subject to technical modifications

PERFORMANCE

Measured at $v = 46 \text{ mm}^2/\text{s}$, $T_{\text{oil}} = 40 \text{ }^\circ\text{C}$



NOTE

The information in this brochure relates to the operating conditions and applications described. For applications or operating conditions not described, please contact the relevant technical department.
Subject to technical modifications.

HYDAC Fluidtechnik GmbH
Justus-von-Liebig-Str.
D-66280 Sulzbach/Saar
Tel: 0 68 97 /509-01
Fax: 0 68 97 /509-598
E-Mail: flutec@hydac.com