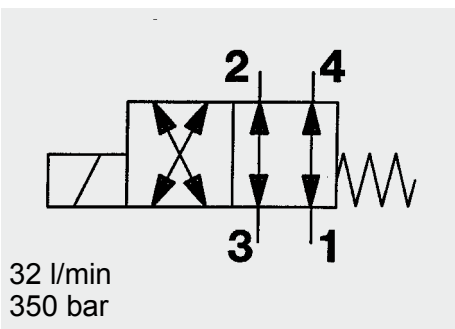
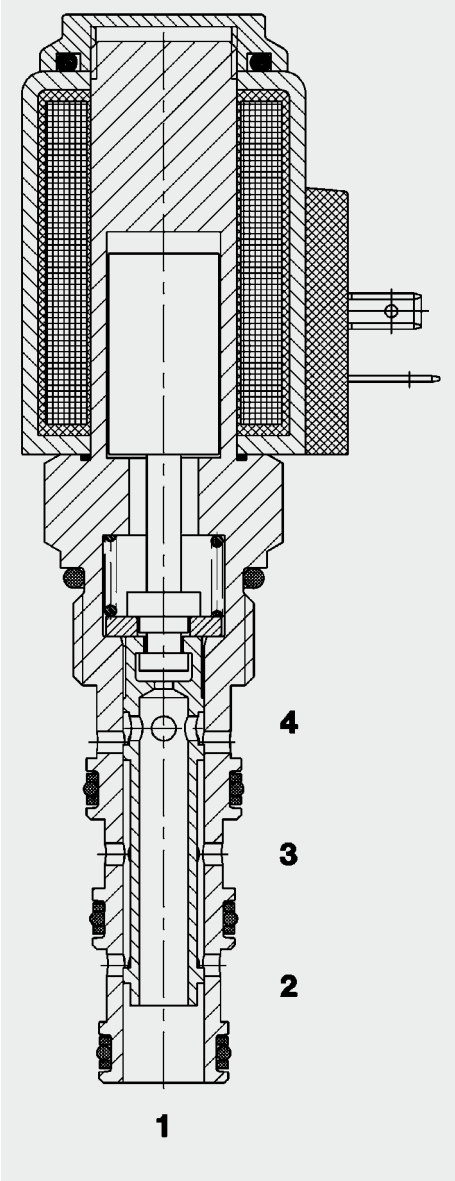


## 4/2 Solenoid Directional Valve **UNF** **Spool Type, Direct-Acting** **SAE-10 Cartridge – 350 bar** WK10X-01



### FUNCTION



When the solenoid coil is de-energised, the valve allows flow in both directions between ports 3 and 2 and in both directions between ports 4 and 1. When the solenoid coil is energized, there is free flow through the valve in both directions between ports 3 and 4 and also between ports 1 and 2.

### FEATURES

- External surfaces zinc-plated and corrosion-proof
- Hardened and ground internal valve components to ensure minimal wear and extended service life
- Coil seals protect the solenoid system
- Wide variety of connections available
- Excellent switching performance by high power HYDAC solenoid
- Low pressure drop due to CFD optimized flow path

### SPECIFICATIONS

Operating pressure:	max. 350 bar	
Nominal flow:	max. 32 l/min	
Internal leakage:	max. 100 cm <sup>3</sup> /min at 250 bar and 34 mm <sup>2</sup> /s	
Media operating temperature range:	min. -20 °C to max. +100 °C	
Ambient temperature range:	min. -20 °C to max. 60 °C	
Operating fluid:	Hydraulic oil to DIN 51524 Part 1 and 2	
Viscosity range:	min. 7.4 mm <sup>2</sup> /s to max. 420 mm <sup>2</sup> /s	
Filtration:	Class 21/19/16 according to ISO 4406 or cleaner	
Installation:	No orientation restrictions	
MTTF <sub>d</sub> :	150 years (see "Conditions and instructions for valves" in brochure 5.300)	
Materials:	Valve body:	free-cutting steel
	Spool:	hardened and ground steel
	Seals:	NBR (standard) FKM (optional, media temperature range -20 °C to +120 °C)
	Back-up rings:	PTFE
	Coil:	Steel/Polyamide
Cavity:	FC10-4	
Weight:	Valve complete	0.48 kg
	Coil only	0.23 kg

### Electrical data:

Current draw at 20 °C:	2.22 A at 12 V DC	
	1.13 A at 24 V DC	
Voltage tolerance:	± 15% of the nominal voltage	
Coil duty rating:	Continuous up to max. 115% of the nominal voltage at 60 °C ambient temperature	
Type of voltage:	DC solenoid, AC voltage is rectified using a bridge rectifier built into the coil	
Coil type:	Coil...-50-1836	

